

13-140-30

GOV'T
LOT 4

"WEBB LAKE TERRACE"



C.S.A.H. 5
R/W
N70°19'E S.46°46'W
151.9
150.3
193.0
S.47°36'30"W
96.9
S.10°00'E
205.0
N.05°51'E

MEANDERED ACREAGE
10.5 ACRES

FLOWAGE
EASEMENT
0.9 ACRES

N.47°37'W
408.97
248.0

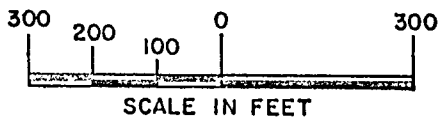
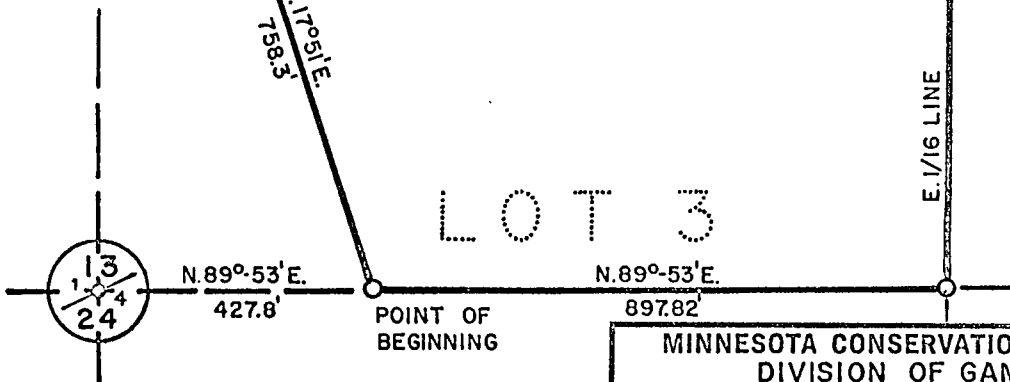
WEBB LAKE
MEANDER LINE

150' 100' S.1/16 LINE
S.89°34'E.
21.43'

GOV'T

TRACT I - 27.5 ACRES
PART OF GOV'T LOTS 3 & 4, SECT. 13
RAYMOND H. & ALMEADA B. FLESCH

LOT 3



- IRON MARKER IN PLACE
- CONSERVATION MARKER SET

JUL 20 1965

MINNESOTA CONSERVATION DEPARTMENT DIVISION OF GAME & FISH		
WEBB LAKE SPAWNING AREA CASS COUNTY - NEAR HACKENSACK		
SEC. 13	T. 140 N. R. 30 W.	5 TH. P.M.
DRAWN GLC 7-1-65	BUREAU OF ENGINEERING	SURVEY R.F. SCHNEIDER NO. 5740
CHECKED MWR 7-8-65		DATUM
REVISED	<i>R.F. Schneider</i> 7-15-65 CHIEF ENGR.	

REQ. 64-90	SHEET 1	FILE E-617-Y
------------	---------	--------------