

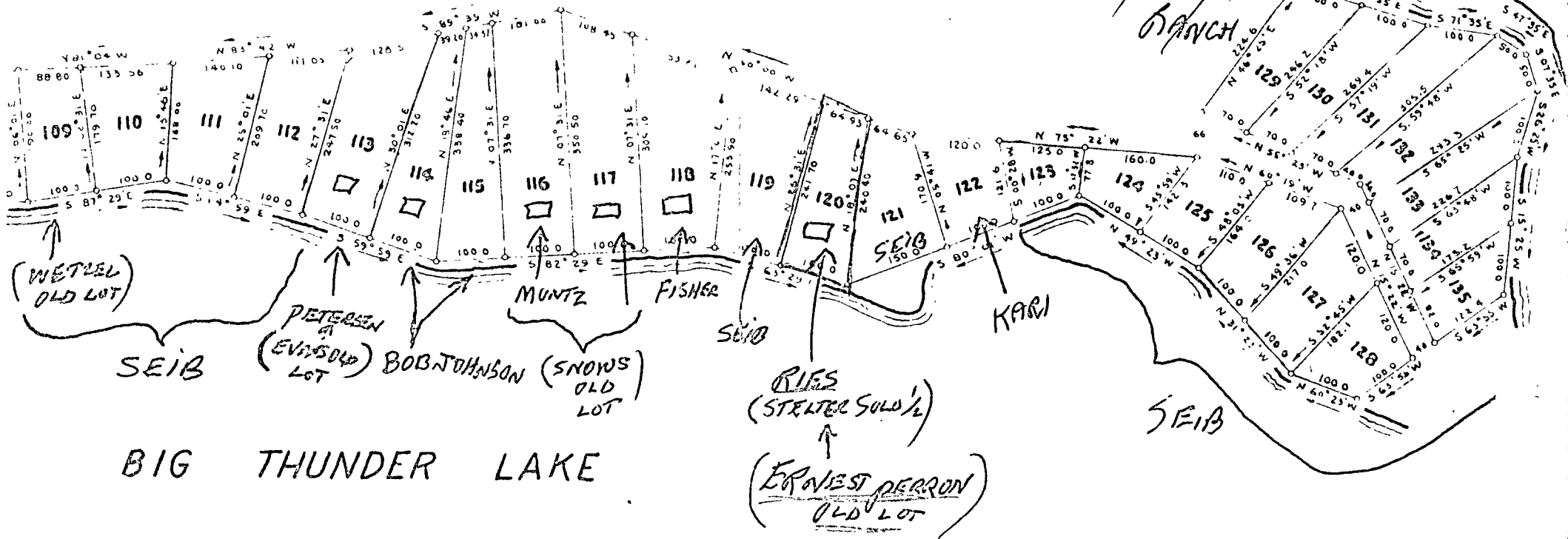
8-140-26

PART OF GOVERNMENT LOT 1 SECTION 8 TOWNSHIP 140 RANGE 26 CASS CO. MINN.

- LOT 101 - SEIB (OUR HOUSE)
- LOT 102 } GEO. JENSEN
- " W/2 103 } "
- LOT E/2 103 } CY. MOGLEIN
- " 104 } "
- LOTS 105 } LEN JOHNSON
- 106 } "
- 107 } "
- 108 } "



THIS POINT 2936.9 FEET S 70° 04' L FROM 1 M. C.  
AT N.E. CORNER OF GOVERNMENT LOT 1



I HEREBY CERTIFY THAT THIS SURVEY AND PLAT WERE PREPARED BY ME OR UNDER MY DIRECT SUPERVISION  
AND THAT I AM A DULY REGISTERED LAND SURVEYOR UNDER THE LAWS OF THE STATE OF MINNESOTA

*A. J. King*  
REGISTRATION NO 1122

SAME AMOUNT OF  
TAXES ARE BILLED TO  
RAY PERRY 3492 N. CLEVELAND  
ST. PAUL MINN