

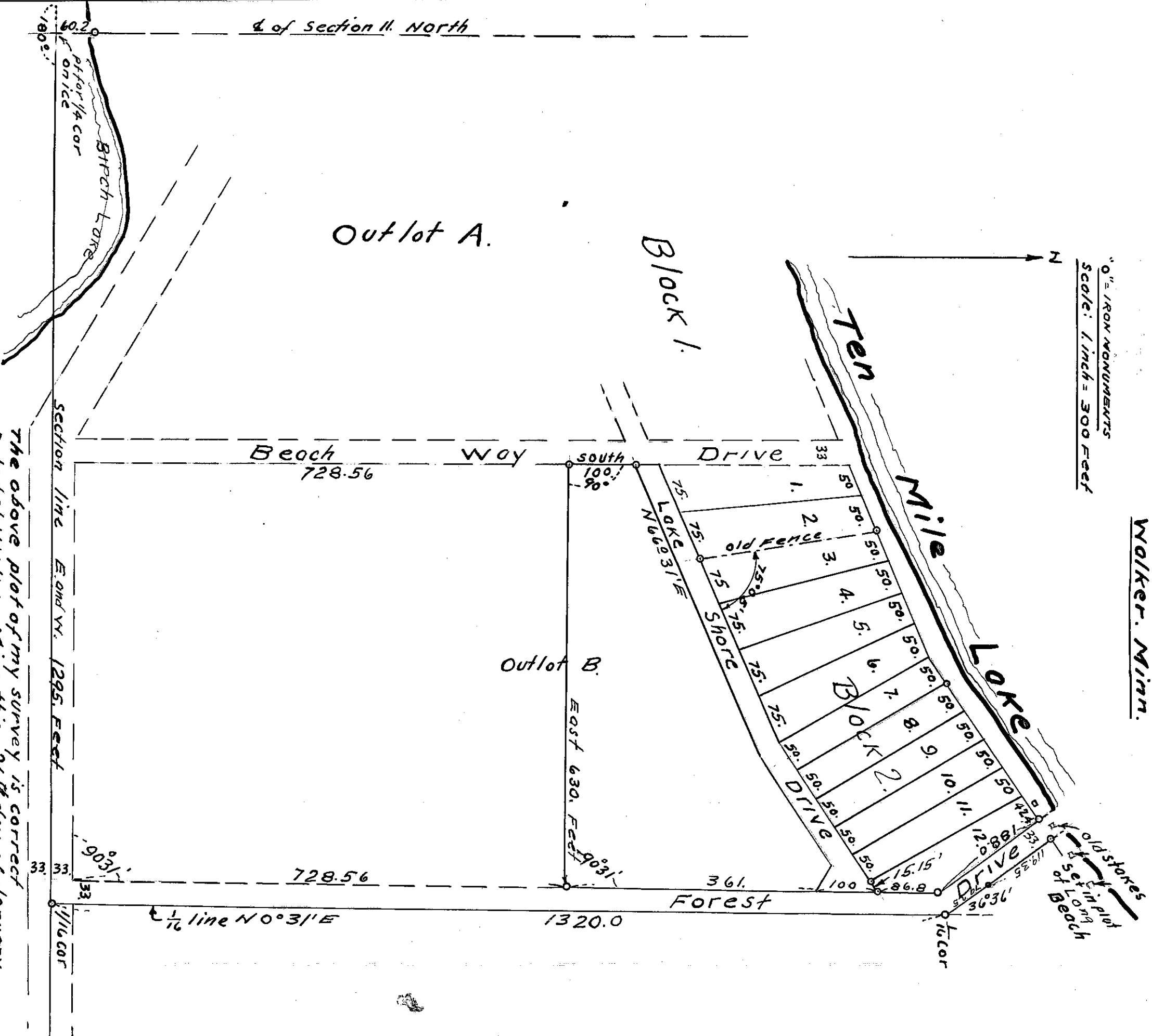
C706B

Part of  
Sunset Beach  
Cass Co Minn

Re-surveyed December 1942.

By  
John W. Curo. County Surveyor  
Walker. Minn.

"0" IRON MONUMENTS  
Scale: 1 inch = 300 Feet



The above plot of my survey is correct  
Dated at Walker Minn this 26<sup>th</sup> day of January  
A.D. 1942.  
John W. Curo. Seal.  
Minn Reg No 1428