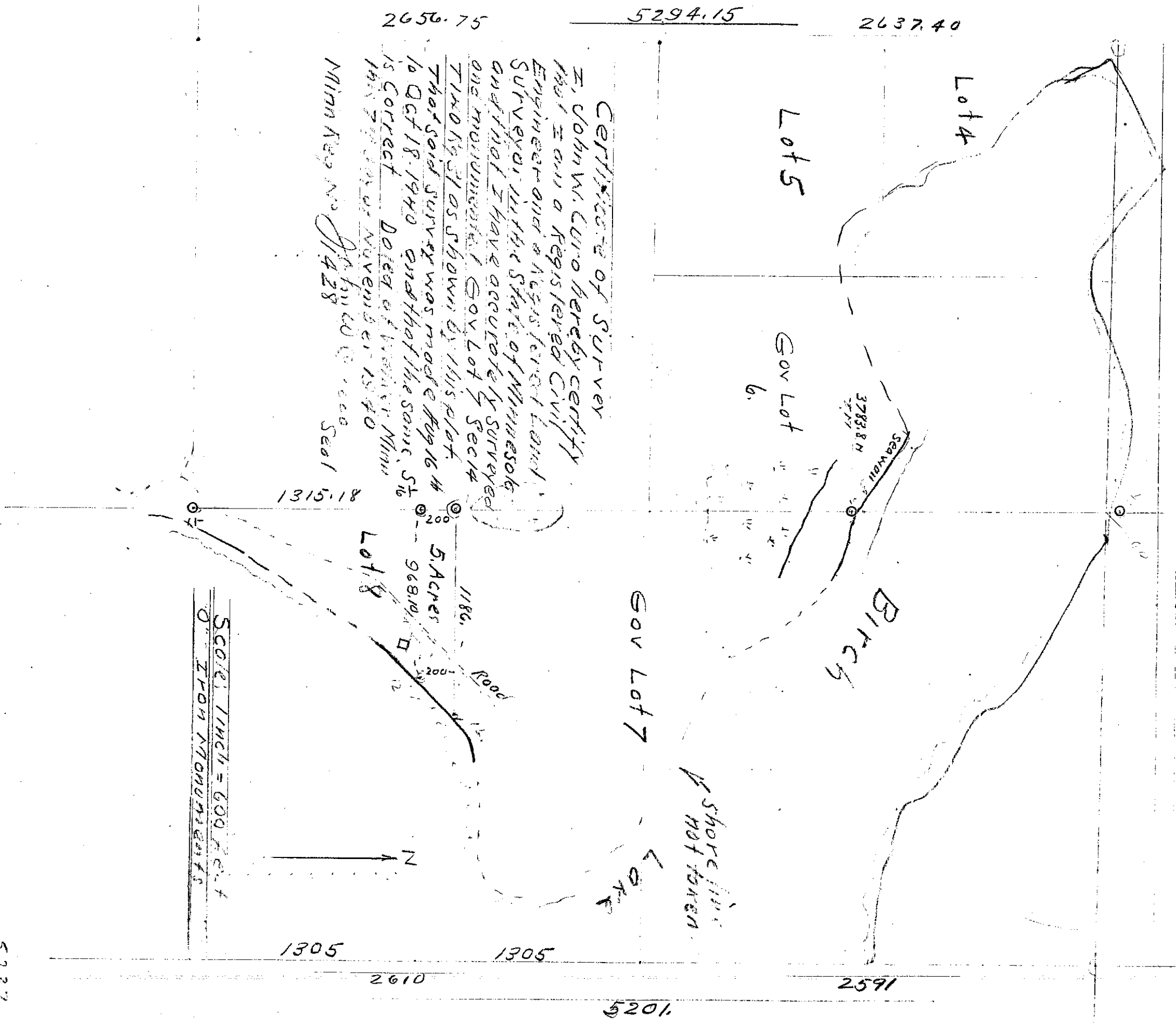


PLOT
 SHOWING GOVY Lot 7, Sec 14, T140 & R9 31W 54PM Cass Co
 MINN SURVEYED August 16-1940 to October 18, 1940 By John W. Curo
 COUNTY SURVEYOR Cass Co Minnesota



CERTIFICATE OF SURVEY
 I, JOHN W. CURO hereby certify
 that I am a Registered Civil
 Engineer and a Registered Land
 Surveyor, with the State of Minnesota,
 and that I have accurately surveyed
 and monumented Gov Lot 7, Sec 14,
 T140 & R9 31W shown by this plat.
 That said survey was made Aug 16 to
 16 Oct 18, 1940 and that the same, etc
 is correct. Dated at Winnetka Minn
 this 27th day of November 1940
 John W. Curo
 Minnesota No. 1428 Seal

Original
 [Signature]

10000

200

3.00 5.00 6.00 7.00 8.00 9.00 10.00 11.00 12.00 13.00 14.00 15.00 16.00 17.00 18.00 19.00 20.00 21.00 22.00 23.00 24.00 25.00 26.00 27.00 28.00 29.00 30.00 31.00 32.00 33.00 34.00 35.00 36.00 37.00 38.00 39.00 40.00 41.00 42.00 43.00 44.00 45.00 46.00 47.00 48.00 49.00 50.00 51.00 52.00 53.00 54.00 55.00 56.00 57.00 58.00 59.00 60.00 61.00 62.00 63.00 64.00 65.00 66.00 67.00 68.00 69.00 70.00 71.00 72.00 73.00 74.00 75.00 76.00 77.00 78.00 79.00 80.00 81.00 82.00 83.00 84.00 85.00 86.00 87.00 88.00 89.00 90.00 91.00 92.00 93.00 94.00 95.00 96.00 97.00 98.00 99.00 100.00

10000

10000

10000