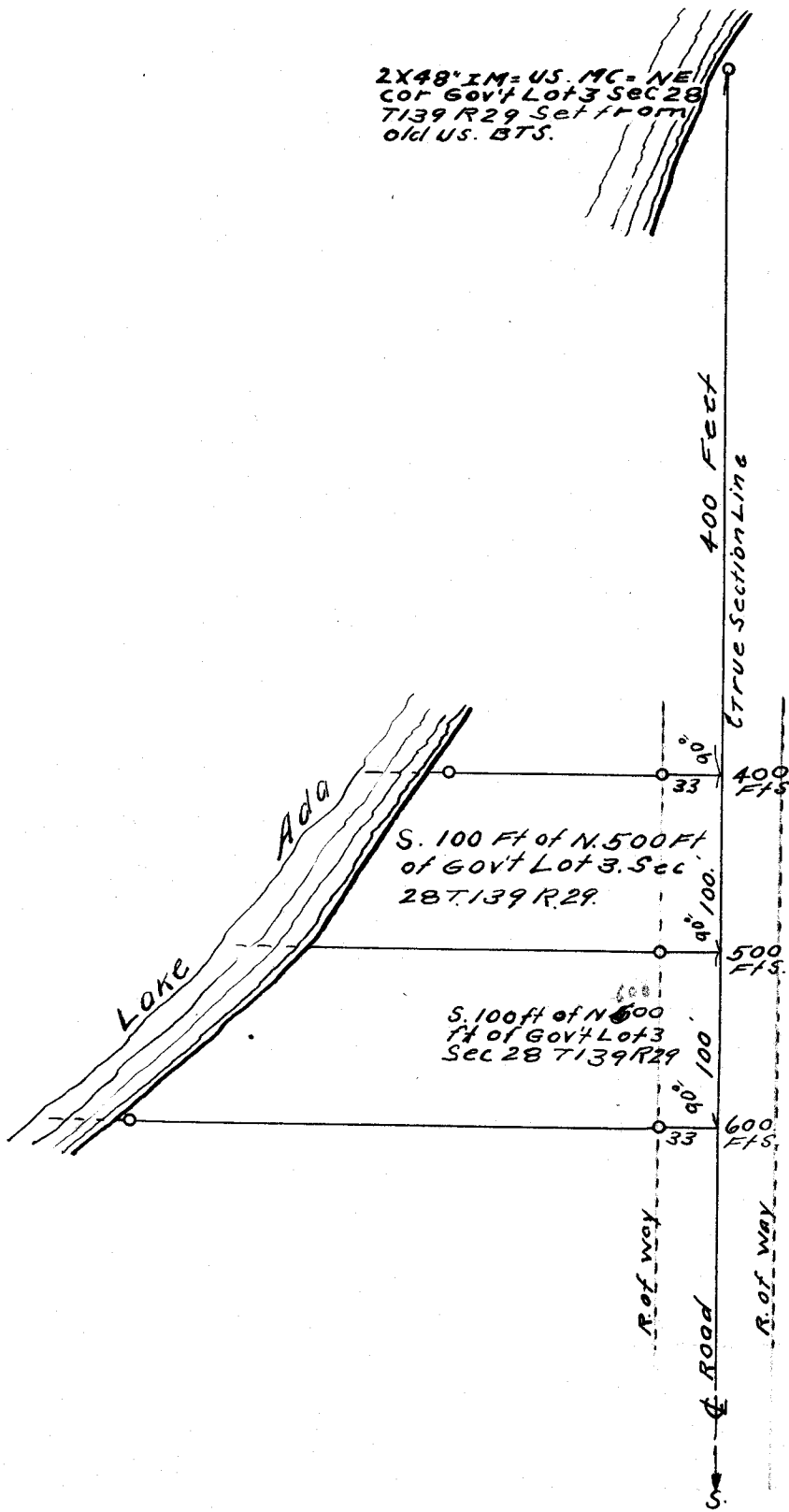


2X48' IM- US. MC- NE
 Cor Govt Lot 3 Sec 28
 T139 R29 Set from
 old US. BTS.



M/S R.W.
 Carpenter

131

#5208

2x4@12" IN = 0.5 MC = NE
COR. GOVT LOT 3, S5C2B
T139 R28 SET FROM
DIALUS B751

EM. U.S. MC
NE COR. LOT

5,100 FT IN 500 FT
GOVT LOT
S5C2B
T139 R28

2
K F FT
1 F F F

5,100 FT IN 500 FT
OF GOVT LOT 3, S5C
287258 R28

SARAH L. CARPENTER
TRACT PG 400 BOOK
49 DEEDS COSSE

80 FT IN 100 FT
IN 500 FT
GOVT LOT 3
S5C2B T139 R28

5,100 FT IN 500 FT
GOVT LOT 3, S5C2B
T139 R28

5,100 FT IN 500 FT
GOVT LOT 3, S5C2B
T139 R28

5,100 FT IN 500 FT
GOVT LOT 3, S5C2B
T139 R28

SARAH L. CARPENTER TRACT
PAGE 400 BOOK 49 DEEDS
CASS Co MINN

52440