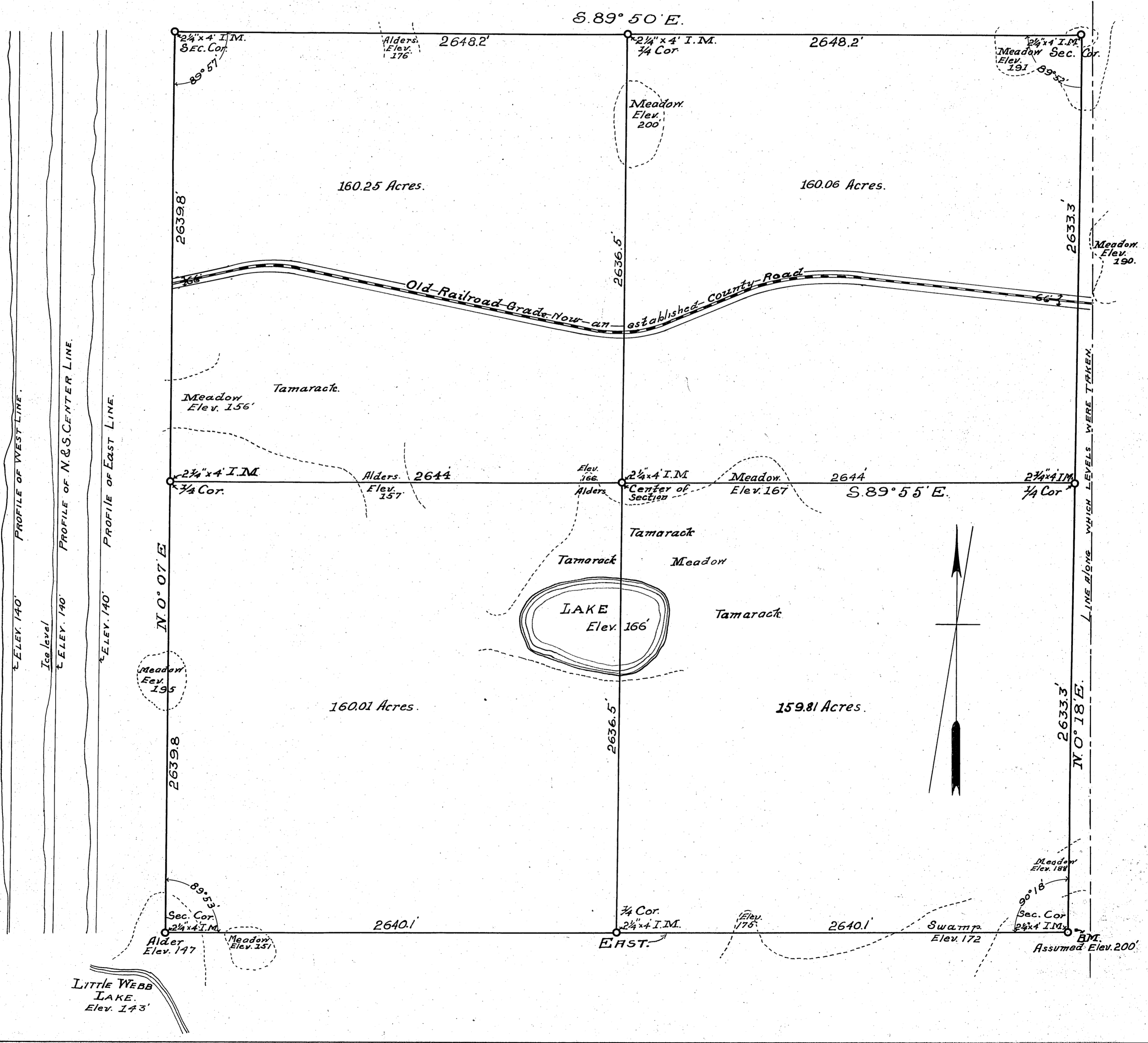
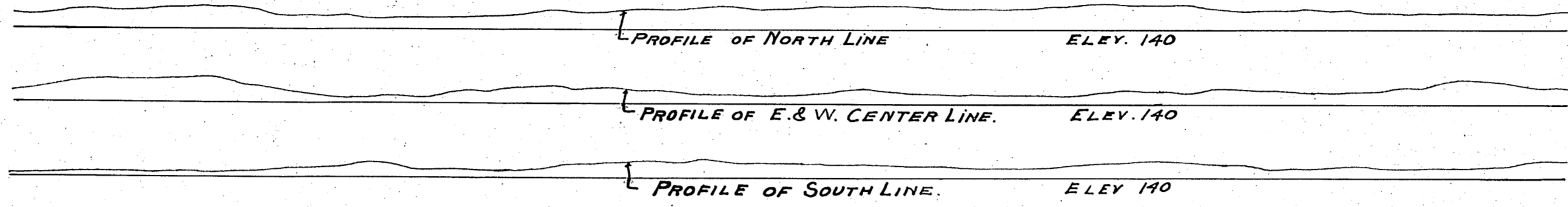


SURVEY OF
SECTION 36, TWP. 141, RG. 30.
 CASS COUNTY MINNESOTA

Surveyed by and under the direction of John W.
 Curo, County Surveyor.

Surveyed Dec. 1915
 Scale 1" = 100 ft.



Note:
 Stocking Lake Elev. 161.
 Little Webb " 143

36-141-30