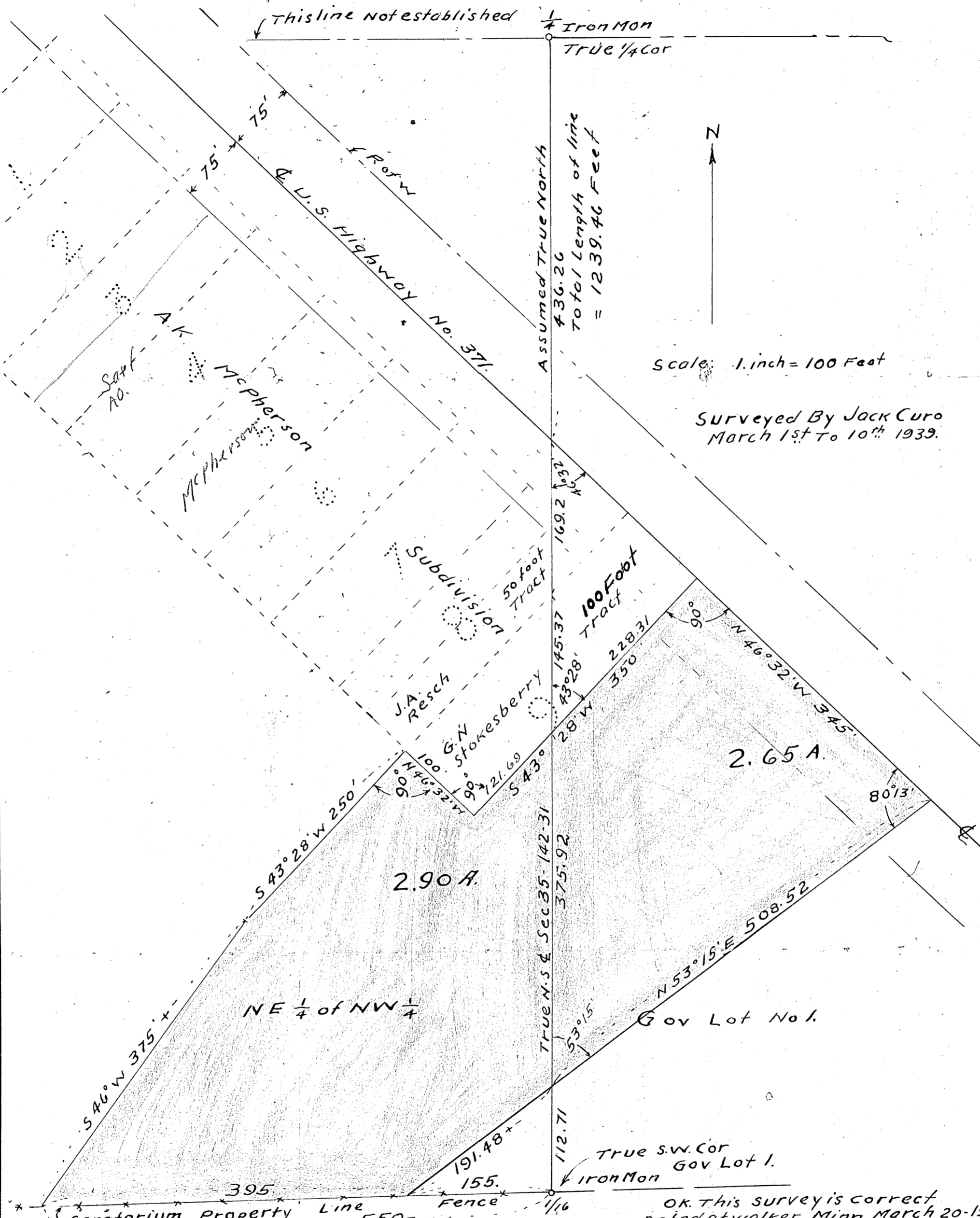


All in Sec 35 T142. R931.
Cass Co Minn

This line not established

Iron Mon
True 1/4 Cor



Assumed True North
436.26
Total Length of line
= 1239.46 Feet



Scale: 1. inch = 100 Feet

Surveyed By Jack Curo
March 1st to 10th 1939.

2.90 A.

2.65 A.

NE 1/4 of NW 1/4

Gov Lot No. 1.

True S.W. Cor
Gov Lot 1.

OK. This survey is correct
Dated at Walker Minn March 20-1939

John W. Curo