

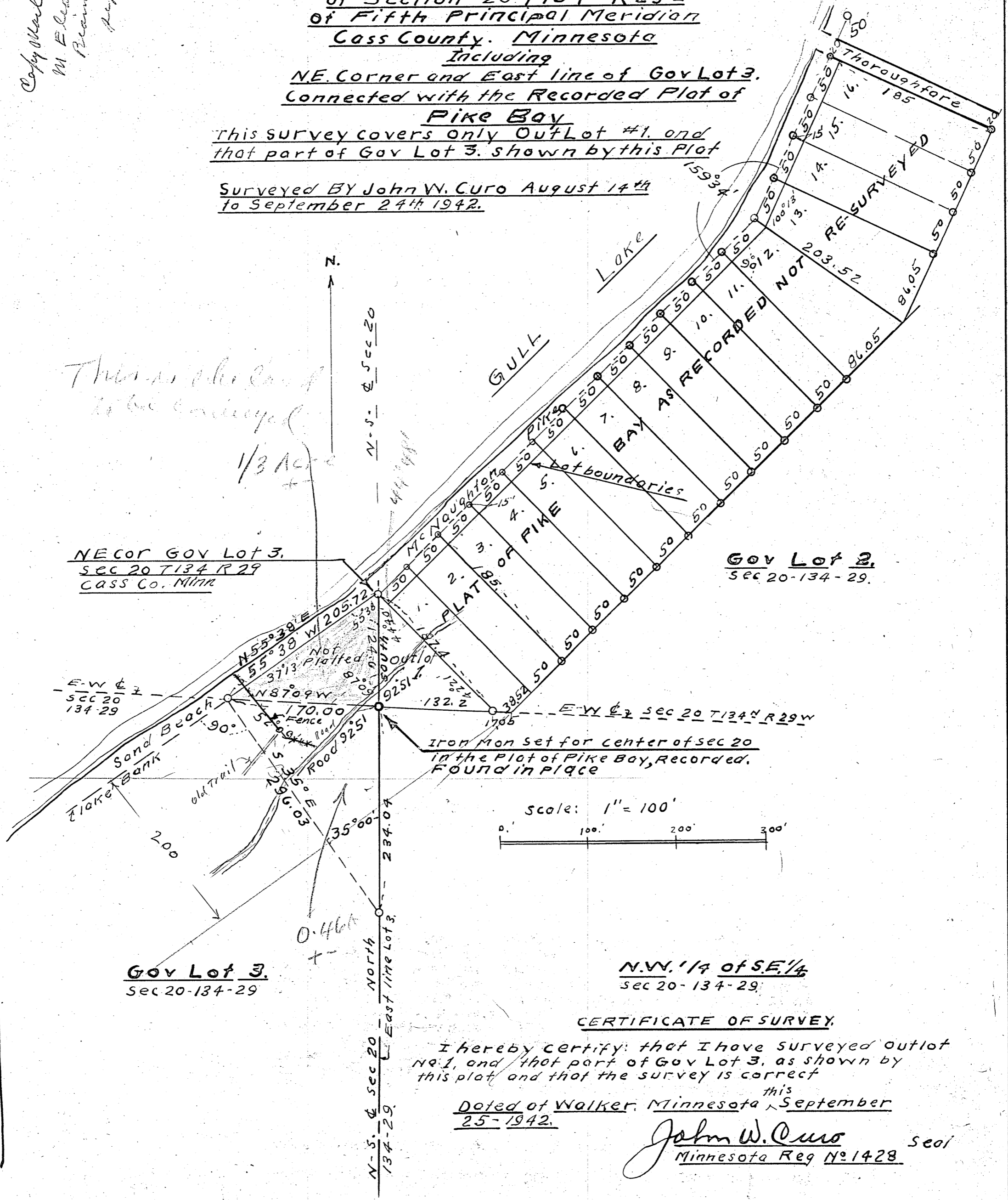
Copy attached to
 M. Eleanor Walker
 Reimburse
 Sept 25-1942
 Curo

FLAT
 showing Center
 of Section 20 T134N R29W
 of Fifth Principal Meridian
 Cass County, Minnesota

Including
 NE Corner and East line of Gov Lot 3.
 Connected with the Recorded Plat of
Pike Bay

This survey covers only Outlot #1, and
 that part of Gov Lot 3, shown by this Plat

Surveyed BY John W. Curo August 14th
 to September 24th 1942.



This is the land
 to be conveyed
 1/3 Acre

NECOR GOV Lot 3,
 SEC 20 T134 R29
 CASS Co. MINN.

Gov Lot 2,
 SEC 20-134-29.

Gov Lot 3,
 Sec 20-134-29

N.W. 1/4 of S.E. 1/4
 sec 20-134-29.

CERTIFICATE OF SURVEY.

I hereby certify: that I have surveyed outlot
 No. 1, and that part of Gov Lot 3, as shown by
 this plat, and that the survey is correct

Dated at Walker, Minnesota ^{this} September
 25-1942.

John W. Curo Seal
 Minnesota Reg No 1428