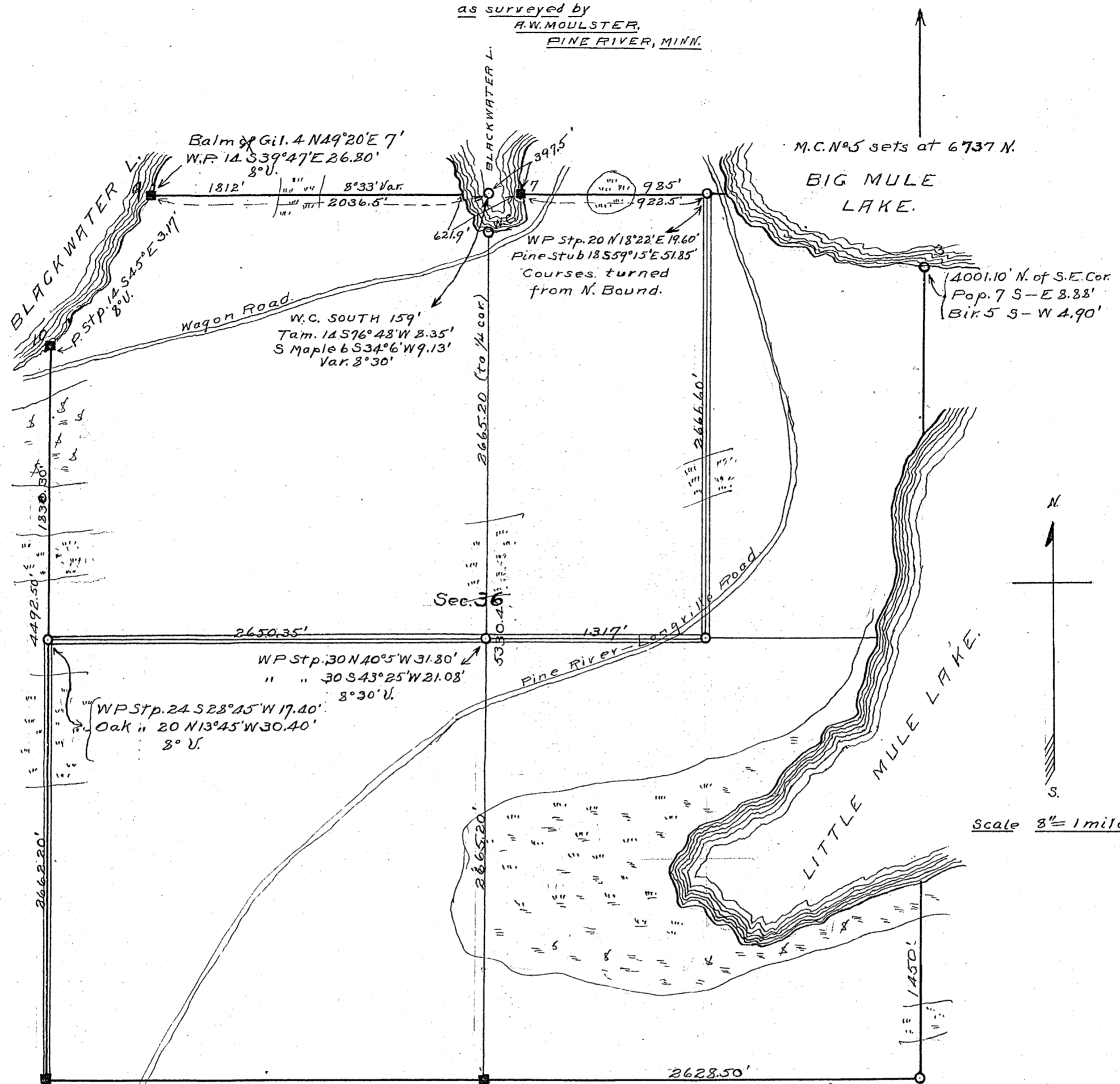


COUNTY ROAD

Ln
SECTION 36, T140N, R.29W.
as surveyed by
A.W. MOULSTER,
PINE RIVER, MINN.



■ = Gov't corners found
 ○ = Corners established.
 All New Bearings given.
 == = Surveyed Road.

Set from evidence.
 P.O.P. 10 N 62°43'E 53.98'
 N.P. 7 N 25°27'W 41.40'
 N.P. 8 S 32°31'W 54.16'
 8°U.

J. A. W. Moulster, Pine River, Minn., do hereby certify that the plot contained on this page is a correct plot of the survey of the County Road in Section 36, Twp. 140, Range 29, as surveyed by me on March 25th 1911.
 Given under my hand at Pine River, Minn., this 17th day of January, 1912.

A. W. Moulster.