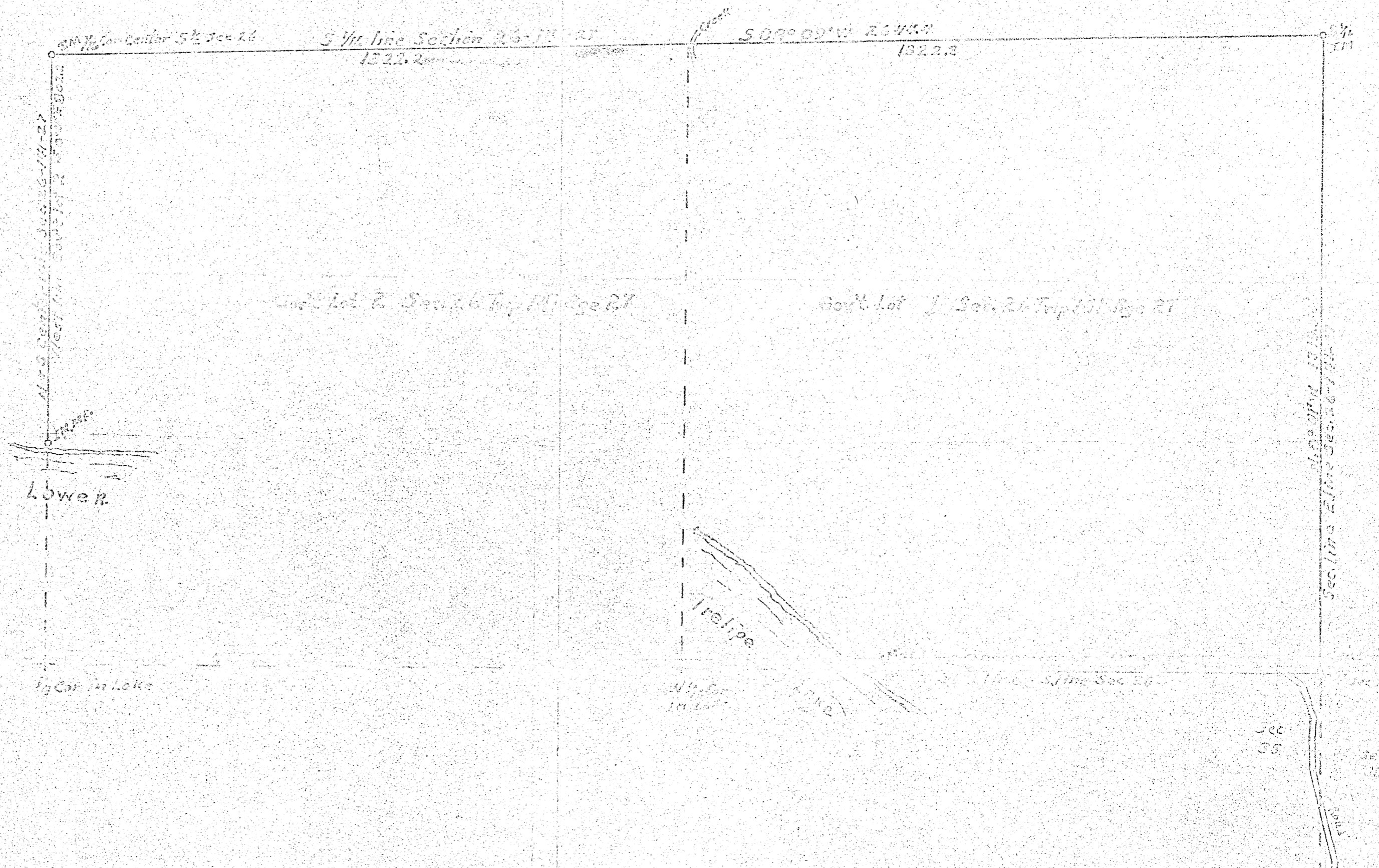


Government Lots 1 and 2, Section 26, Township 23 N, Range 23 W of the 3rd PM, Cass County, Minnesota.
 Surveyed and prepared by Harold Curo, County Surveyor, of Cass County, Walker, Minnesota, Feb. 28th 1953



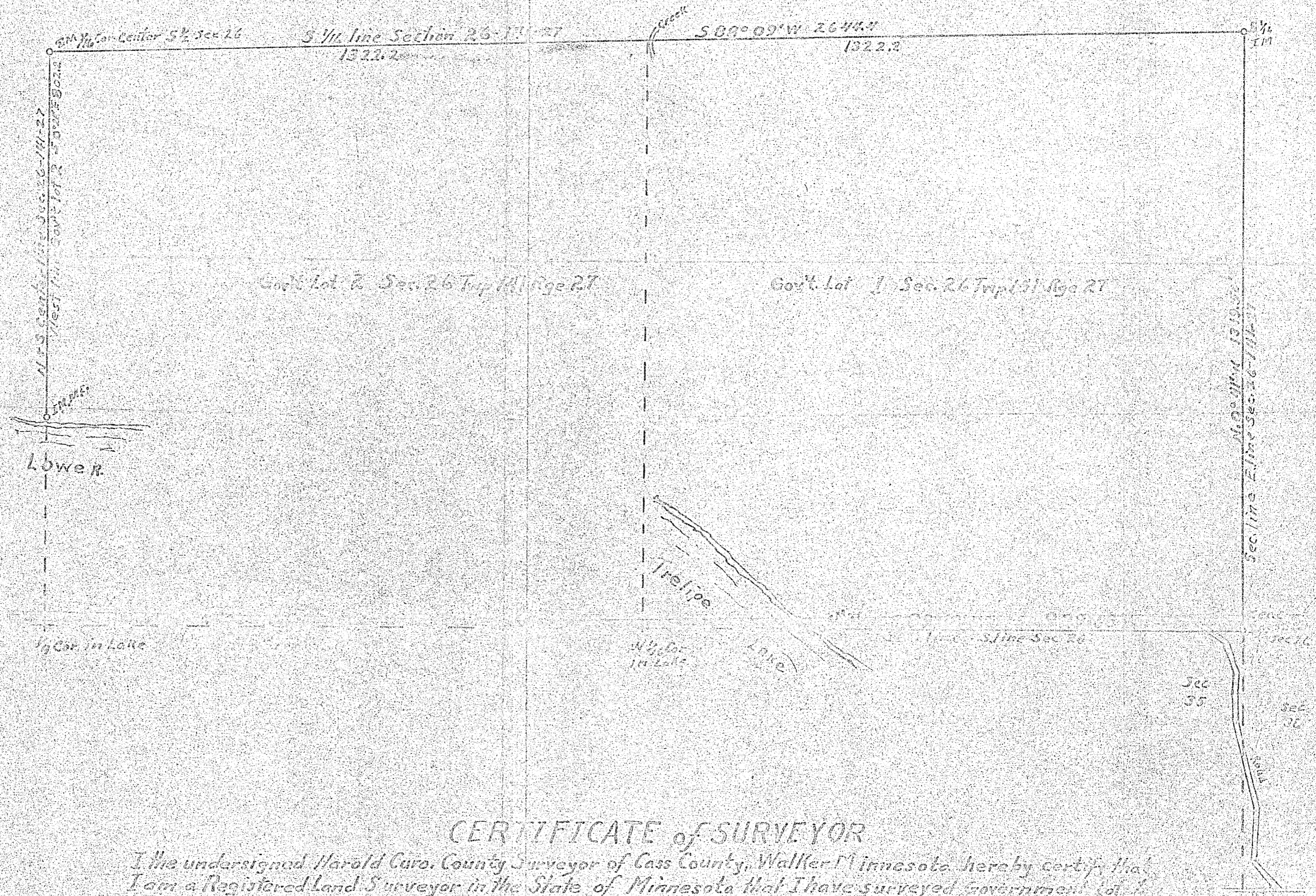
RECEIVED
 # 4460
 2010
 GL1+2 26-141-27
 COUNTY SURVEYOR

CERTIFICATE of SURVEYOR

I the undersigned Harold Curo, County Surveyor of Cass County, Walker Minnesota hereby certify that I am a Registered Land Surveyor in the State of Minnesota that I have surveyed Government Lot 1 and 2, Section 26, Township 23 N, Range 23 W and set iron pipe monuments at points as shown by this plat. The West line of said section 26 was considered a true N-S line in this survey, completed Feb. 28th 1953.

Harold Curo

Government Lots 1 and 2, Section 26, Township 141st Range 27th of the 5th PM, Cass County, Minnesota
 Surveyed and prepared by Harold Curo, County Surveyor of Cass County, Walker, Minnesota, Feb. 28th 1958



RECEIVED
 #4460
 2010
 GL1+2 26-141-27
 COUNTY SURVEYOR

CERTIFICATE of SURVEYOR

I, the undersigned, Harold Curo, County Surveyor of Cass County, Walker, Minnesota, hereby certify that I am a Registered Land Surveyor in the State of Minnesota that I have surveyed Government Lots 1 and 2, Section 26, Twp 141 Rge 27 and set iron pipe monuments at points as shown by this Plat. The West line of said section 26 was considered a true N+S line in this survey, completed Feb. 28th 1958.

Harold Curo
 County Surveyor of Cass County, Walker, Minnesota