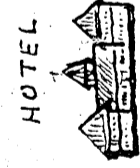


12

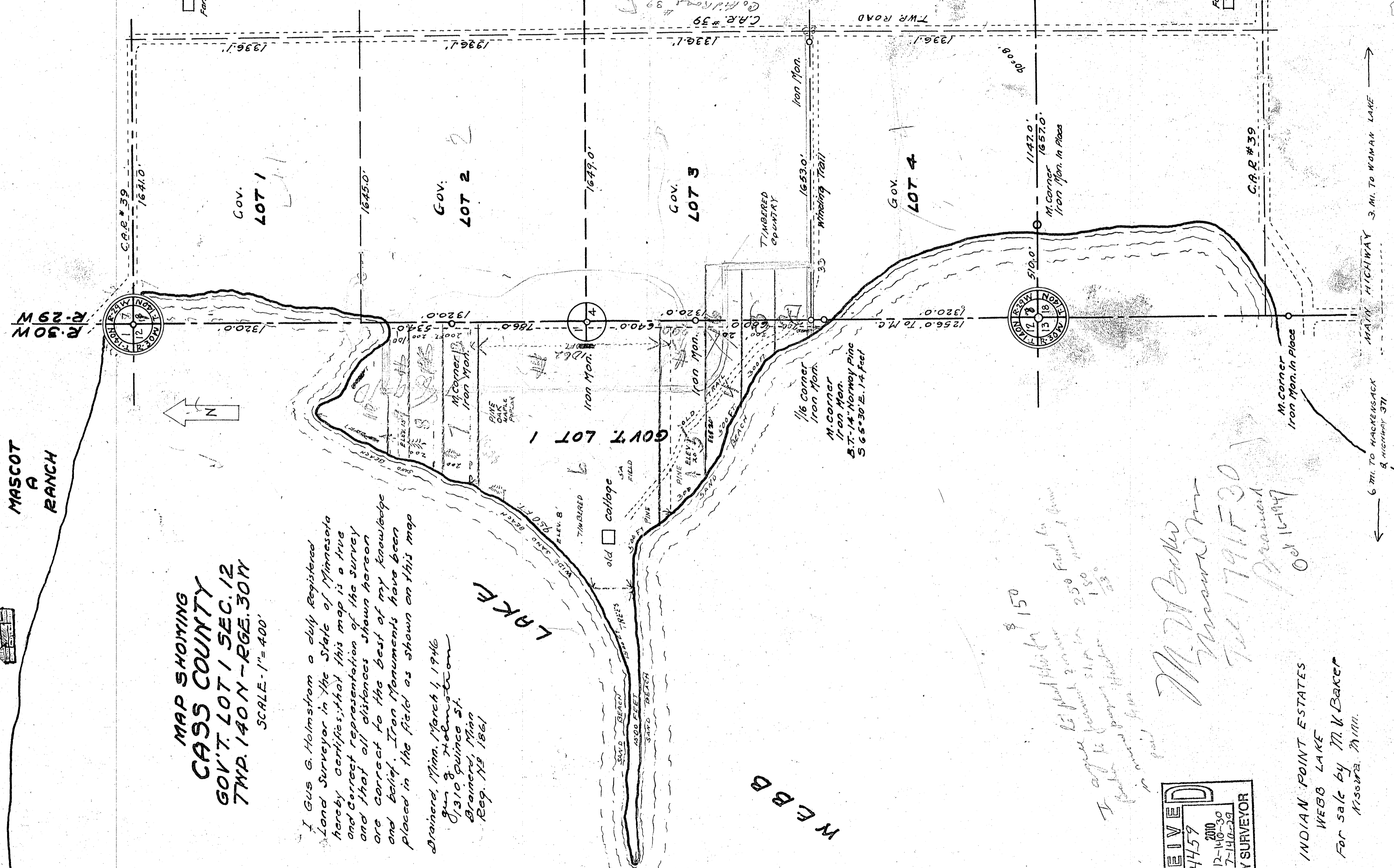


MASCOT
A
RANCH

MAP SHOWING
CASS COUNTY
GOV'T. LOT 1 SEC. 12
TWP. 140 N - RGE. 30 W
SCALE - 1" = 400'

I, Gus G. Holmstrom a duly Registered
Land Surveyor in the State of Minnesota
hereby certifies that this map is a true
and correct representation of the survey
and that all distances shown hereon
are correct to the best of my knowledge
and belief. Iron Monuments have been
placed in the field as shown on this map
Brainerd, Minn. March 1, 1946

Gus G. Holmstrom
910 Quince St.
Brainerd, Minn
Reg. No. 1861



I agree to pay for the survey \$150
I agree to pay for the survey 250 Feet by line
150
150
I agree to pay for the survey 150
I agree to pay for the survey 150

RECEIVED
4459
2010
GLI 12-140-30
GLI 47-140-39
COUNTY SURVEYOR

M. V. Baker
Mascot, Minn.
Tel. 1791730
Prairie
Oct 16-1947

INDIAN POINT ESTATES
WEBB LAKE
For sale by M. V. Baker
Mascot, Minn.

6 MI. TO HACKENSACK
& HIGHWAY 571
MAIN HIGHWAY 3 MI. TO WOMAN LAKE