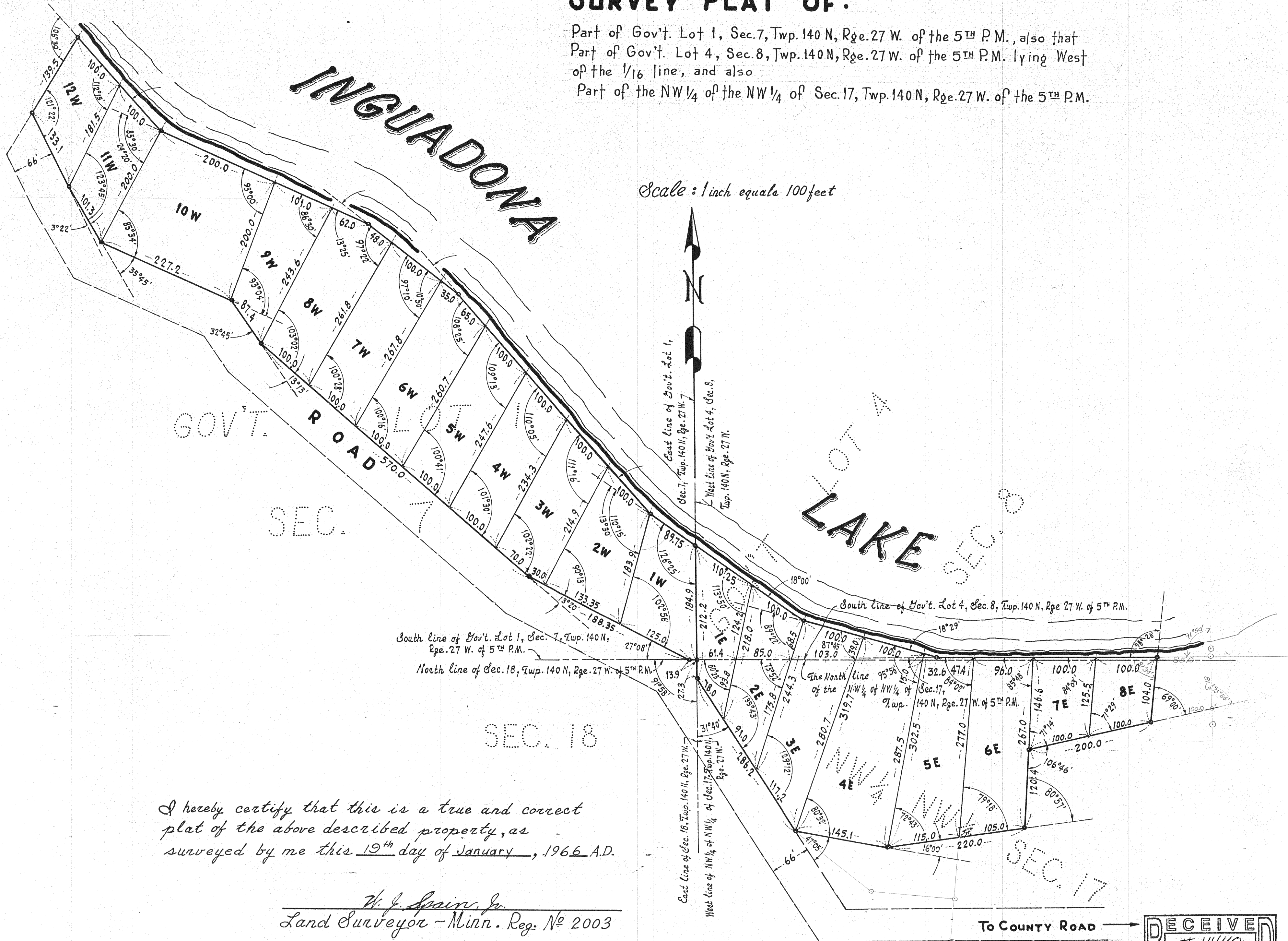


SURVEY PLAT OF:

Part of Gov't. Lot 1, Sec. 7, Twp. 140 N, Rge. 27 W. of the 5th P.M., also that Part of Gov't. Lot 4, Sec. 8, Twp. 140 N, Rge. 27 W. of the 5th P.M. lying West of the 1/16 line, and also Part of the NW 1/4 of the NW 1/4 of Sec. 17, Twp. 140 N, Rge. 27 W. of the 5th P.M.



I hereby certify that this is a true and correct plat of the above described property, as surveyed by me this 19th day of January, 1966 A.D.

W. J. Spain, Jr.
Land Surveyor - Minn. Reg. No 2003

RECEIVED
4440
2010
GL 7-140-27
GL 8-140-37
NW-17-140-27
COUNTY SURVEYOR