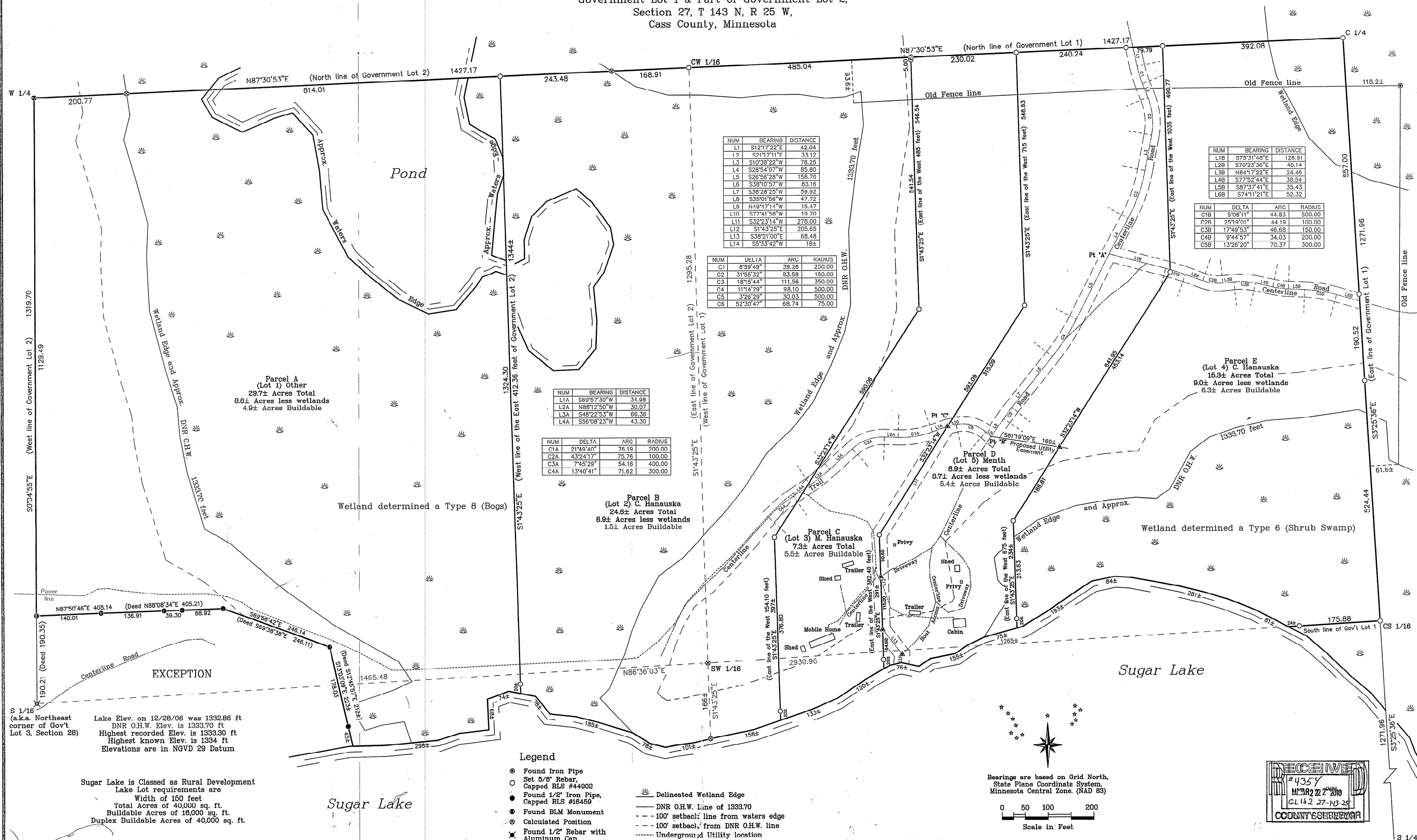


Certificate of Survey for:
Hanauska & Menth
 Government Lot 1 & Part of Government Lot 2,
 Section 27, T 143 N, R 25 W,
 Cass County, Minnesota



NUM	BEARING	DISTANCE
L1	S12°17'22"E	42.04
L2	S21°17'11"E	33.12
L3	S10°38'22"W	78.25
L4	S28°54'07"W	85.80
L5	S26°56'28"W	158.70
L6	S38°10'57"W	83.16
L7	S38°28'25"W	39.92
L8	S35°01'58"W	47.72
L9	N49°17'14"W	15.47
L10	S77°41'58"W	19.20
L11	S32°23'14"W	278.00
L12	S1°43'25"E	205.65
L13	S38°21'00"E	68.48
L14	S53°34'42"W	18±

NUM	DELTA	ARC	RADIUS
C1	8°59'49"	39.28	230.00
C2	31°55'32"	83.68	150.00
C3	18°15'44"	111.58	350.00
C4	11°14'29"	98.10	500.00
C5	3°26'29"	30.03	500.00
C6	52°30'47"	68.74	75.00

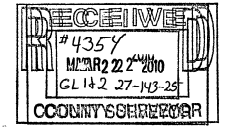
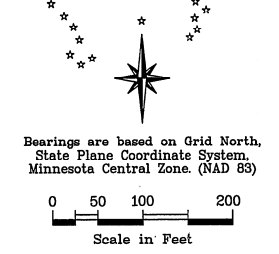
NUM	BEARING	DISTANCE
L1A	S69°57'30"W	34.98
L2A	N88°12'50"W	30.07
L3A	S48°22'53"W	66.36
L4A	S56°08'23"W	43.30

NUM	DELTA	ARC	RADIUS
C1A	21°49'40"	76.19	200.00
C2A	43°24'17"	75.76	100.00
C3A	7°45'29"	54.16	400.00
C4A	13°40'41"	71.62	300.00

NUM	BEARING	DISTANCE
L1B	S75°31'48"E	126.91
L2B	S70°23'36"E	40.14
L3B	N84°17'22"E	24.46
L4B	S77°52'44"E	38.54
L5B	S87°37'41"E	35.43
L6B	S74°11'21"E	52.32

NUM	DELTA	ARC	RADIUS
C1B	5°08'11"	44.83	500.00
C2B	25°19'01"	44.19	100.00
C3B	17°49'53"	46.68	150.00
C4B	9°44'57"	34.03	200.00
C5B	13°26'20"	70.37	300.00

- Legend**
- Found Iron Pipe
 - Set 5/8" Rebar, Capped RLS #44902
 - Found 1/2" Iron Pipe, Capped RLS #18459
 - Found BLM Monument
 - Calculated Position
 - Found 1/2" Rebar with Aluminum Cap
 - ▲ Set 60d spike
 - 24" Basswood
 - Delineated Wetland Edge
 - DNR O.H.W. Line of 1333.70
 - 100' setback line from waters edge
 - 100' setback from DNR O.H.W. line
 - Underground Utility location
 - Centerline of Road



S 1/16 (a.k.a. Northeast corner of Gov't Lot 3, Section 28)
 Lake Elev. on 12/28/06 was 1332.86 ft
 DNR O.H.W. Elev. is 1333.70 ft
 Highest recorded Elev. is 1333.30 ft
 Highest known Elev. is 1334 ft
 Elevations are in NGVD 29 Datum

Sugar Lake is Classed as Rural Development Lake Lot requirements are
 Width of 150 feet
 Total Acres of 40,000 sq. ft.
 Buildable Acres of 18,000 sq. ft.
 Duplex Buildable Acres of 40,000 sq. ft.

Northern Lights Surveying & Mapping, Inc.
 1007 NW 4th Street
 Grand Rapids, MN 55744
 Phone/Fax: (218) 326-5325
 E-mail: nlsurveying1001@qwestoffice.net

Drafted by: BDT	Date of Draft: 5/23/08
Crew Chief: BDT	Project Number 2006120