

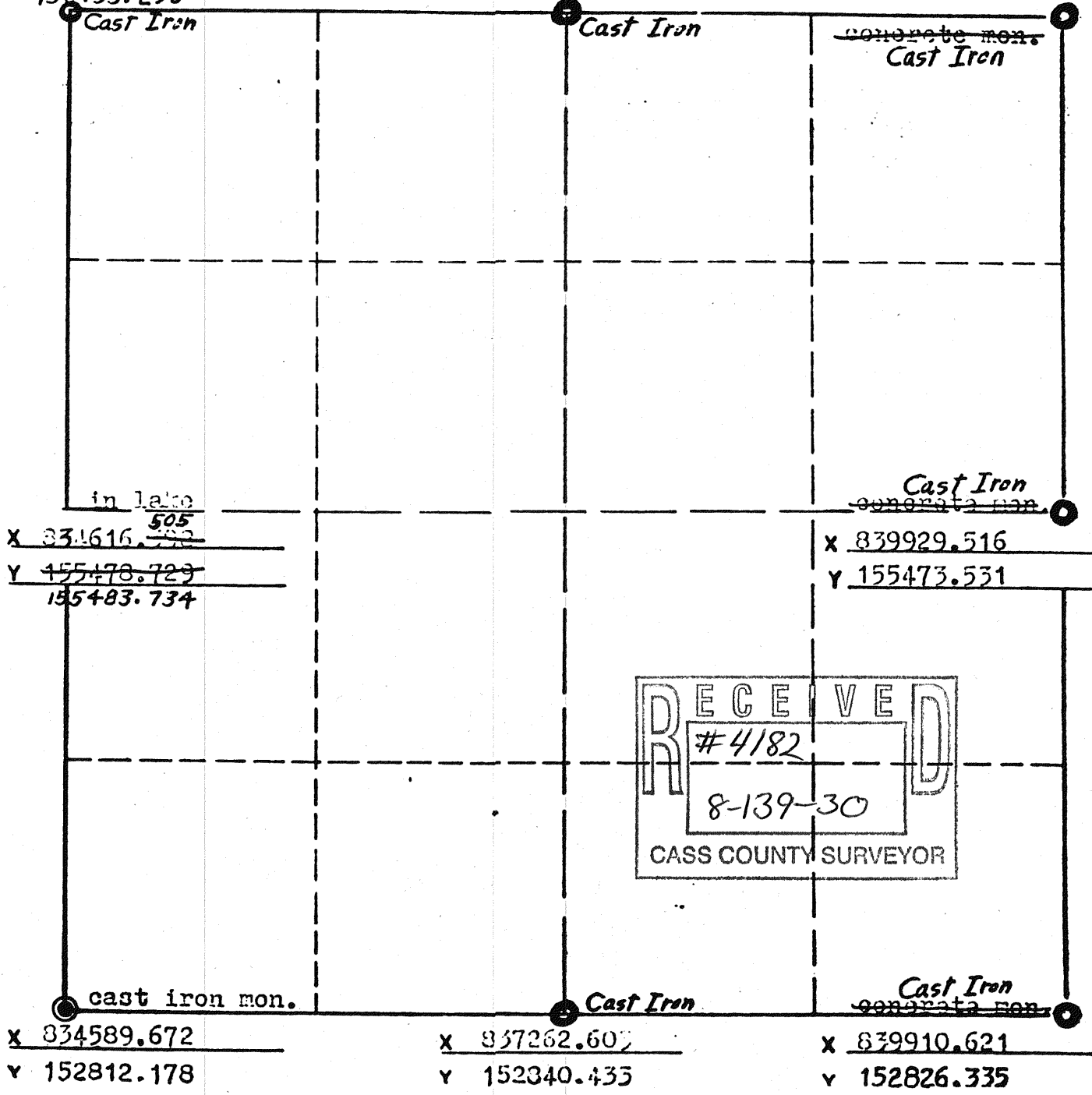
CONVERSION EQUA TO  $X_{sp} = (X_p + 1099941)(0.9999019)$   
 STATE PLANE COOR  $Y_{sp} = (Y_p + 526987)(0.9999019)$   
 SCALE FACTOR \_\_\_\_\_  
 AVERAGE ELEV \_\_\_\_\_  
 COMBINED FACTOR \_\_\_\_\_

SEC. 8 T. 139 R. 30  
 DATE \_\_\_\_\_ BY \_\_\_\_\_

ANGLE INST. NO. \_\_\_\_\_  
 DISTANCE INST. NO. \_\_\_\_\_  
 ACCURACY INFOR. \_\_\_\_\_

- CAST IRON MON
- TEMPORARY MONUMENT (ANNOTATE)
- ⊙ M.H.D. IRON PIN
- B.P. BRASS PLUG
- CONC. MON. STONE MON.
- D.H. DRILL HOLE
- RRS RAILROAD SPIKE

*338*  
 X 834643.427 X 837301.252 X 839965.724  
 Y 158145.251 Y 158135.993 Y 158114.909  
*158155.290*



SURVEY POINT COORDINATE TABULATION

S.R. 1118

Plat 11-4

POINT	PROJECT COORDINATES		TYPE OF MONUMENT	LOCATION OF STEEL WITNESS POST	MON. POS. CHK'D.
	X	Y			
4 B 1	837,370.541	157,011.477	Iron Pin	1' South	X
4 B 2	837,358.441	155,478.468	Square Monument	1' South	X
4 B 3	837,348.671	154,240.664	Iron Pin	1' South	X
4 B 4	837,339.182	153,038.513	Do Not Stake		
4 B 5	837,324.183	153,038.632	Do Not Stake		
3 B 3 12	837,322.616	152,840.113	Iron Pin	----	
N 1/4 17	837,262.603	152,840.433	Cast Iron	----	
3 B 3 11	837,088.119	152,838.589	Iron Pin	----	
4 B 6	837,087.837	152,867.101	Iron Pin	1' East	X
4 B 7	837,188.622	152,968.087	Iron Pin	1' North	X
4 B 8	837,197.177	154,051.853	SWP	----	
4 B 9	837,208.438	155,478.757	Square Monument	1' North	X
4 B 10	837,219.434	156,871.766	Iron Pin	1' North	X
4 B 11	837,229.400	158,134.592	Square Monument	1' South	X
4 B 4 12	837,244.400	158,134.472	Square Monument	1' South	
N 1/4 9	837,304.252	158,133.993	Cast Iron	----	
4 B 4 13	837,379.396	158,133.454	Square Monument	1' South	

RECEIVED  
 CASS COUNTY SURVEYOR