

NE Cor. - 2" Capped I. Pipe
 6 J. Pine S 56 E 54.15
 9 R. Oak S 43 W 36.20
 7 Pop. N 70 W 34.10

MC on E. Line - N. Shore Crystal Lake
 2" I. Pipe found in place
 5 J. Pine N 58-25 E 11.68
 12 J. Pine N 6-40 E 28.98
 Bearings from Sec. Line as North

RECEIVED
 #3984
 SEP - 9 2008
 GL 18-140-31
 CASS COUNTY SURVEYOR

1-17-87
W.D.
J.C.
K.L.

FLORENCE BANNISTER 13-40-32

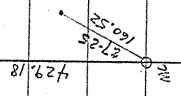
177-47 W
357-84
126-36
251-73
124-17
248-57
44-54
154-23
308-76

NE COR. 13-40-32
6" J. PIPE 530' 54.15
9" P. ORK 543' W 36.2 (OLD)
7" P. ORK N 70' W 34.1
12" P. ORK S 80' E 36.4 (OLD)

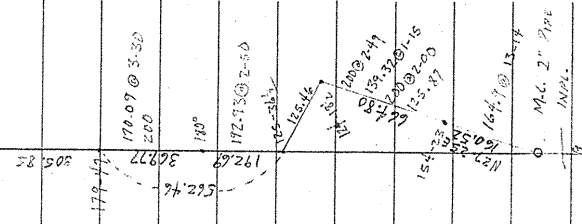
© M.C. ISALDIN, S.W. 1/4, T. 20 N., R. 10 W., S. 1/4, Sec. 13

M.C. N. Shore Crystal Lake - E. Lynn Sec 13
2" J. Pipe Impl.
5" J. Pipe N 58' 25" E 11.68
12" J. Pine N 61' 40" E 28.98

124-55
27-25
77-30



NE COR. SEC. 13
2" COMPASS PIPE
IMPL. ON N. RD.



RECEIVED
SEP - 9 2008
CASS COUNTY SURVEYOR

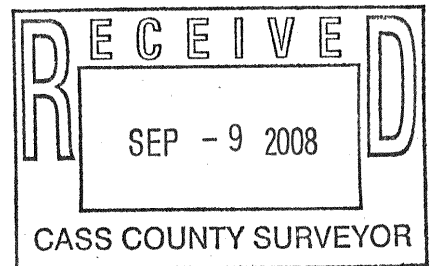
13-140-32

NE COR. 13

BOB McCLELLAND RESET 2" PIPE
FOUND IN RD. DISTURBED BY GRADER

8 OAK S40W 86.0 }
12 POPPLE S85E 36.2 } 5/4/1960

1333 S. FROM F. E. S.



13-140-32

COR. 11-12-13-14 (NW 13)

2x2x24 GAS PIPE SET @ OLD STAKE LOC.

J.PINE 14 S 22-08 E 44'

" 10 N 64-22 W 61.8'

N 4 13

J.PINE 14 S 67 W 154.8

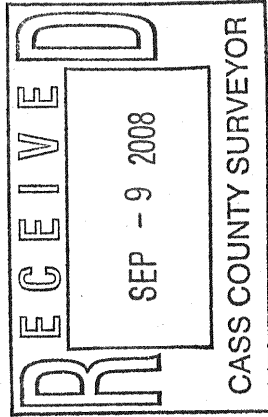
SE 13

J.PINE 8 S 43-49 E 40.50

J.PINE 8 N 35-40 E 36.7

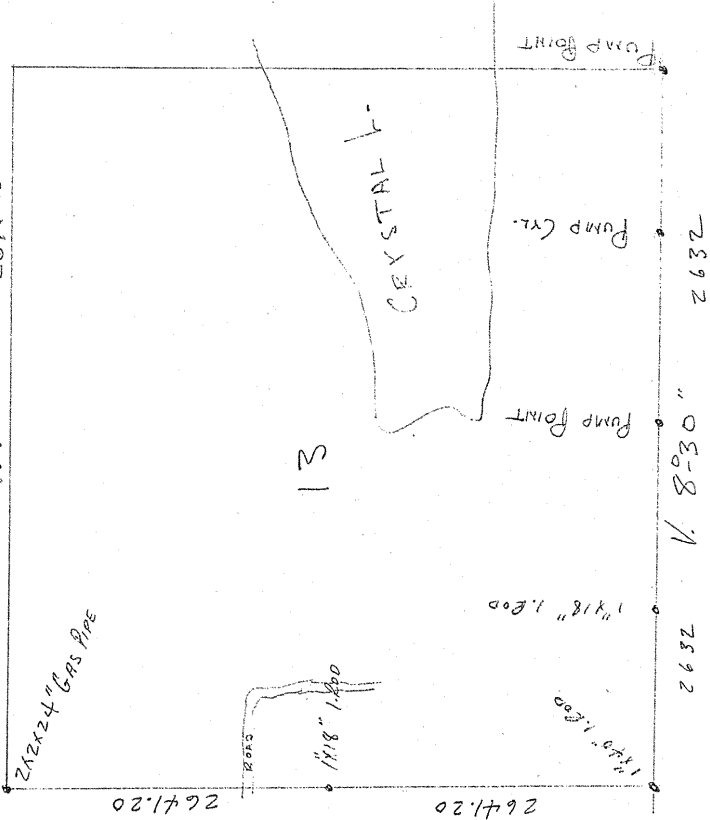
" BEG @ 1/4 COR 13-14 RUN EAST N. 8-30

@ 2640 HUB CEN SEC. 13 IS S 5-23 W 58.6'



13-140-32

2646.15 N. 7°



Bx. A P. 459
H. COBO - 1921