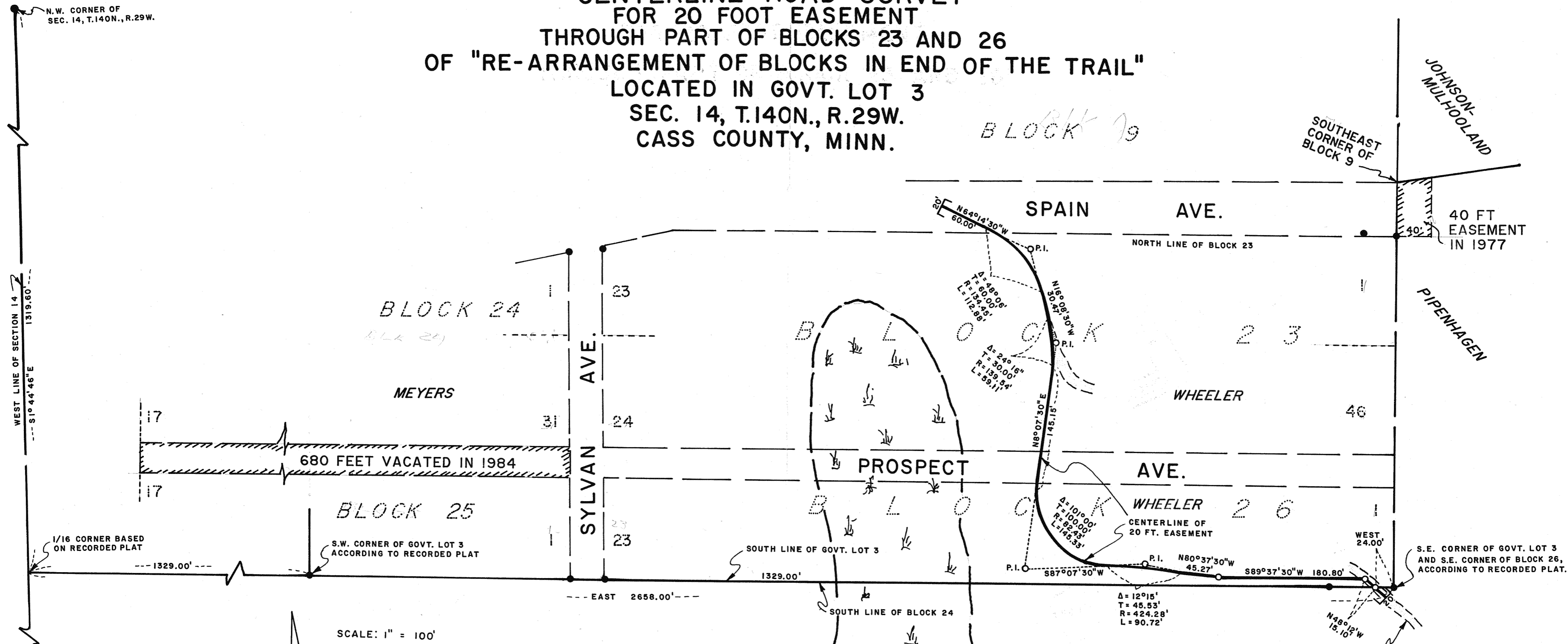


**CENTERLINE ROAD SURVEY  
FOR 20 FOOT EASEMENT  
THROUGH PART OF BLOCKS 23 AND 26  
OF "RE-ARRANGEMENT OF BLOCKS IN END OF THE TRAIL"  
LOCATED IN GOVT. LOT 3  
SEC. 14, T.140N., R.29W.  
CASS COUNTY, MINN.**



SCALE: 1" = 100'  
 ○ = IRON MONUMENT SET  
 ● = IRON MONUMENT FOUND IN PLACE  
 INITIAL BEARINGS ASSIGNED  
 ▽ DENOTES WET LAND

NOTE: JUDGMENT FILED DECEMBER 17, 1984, AS DOCUMENT # 279537, DECREED THAT PART OF "PROSPECT AVENUE" IS HEREBY VACATED....

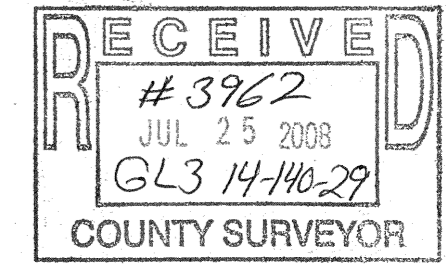
DOCUMENT # 233195, A WARRANTY DEED, PIPENHAGEN TO JOHNSON-MULHOLLAND, CONTAINS A 40.00 FOOT EASEMENT.

REVISED 9/27/1988 RAM

I hereby certify that this survey was prepared by me or under my direct supervision and that I am a duly Registered Land Surveyor under laws of the State of Minnesota.

Date 11-22-82 Reg. No. 11946

Roger A. Mustonen  
 Roger A. Mustonen Land Surveyor



N.W. CORNER OF SEC. 14, T.140N., R.29W.

WEST LINE OF SECTION 14  
 1319.60'  
 S1°44'46"E

1/16 CORNER BASED ON RECORDED PLAT

680 FEET VACATED IN 1984

S.W. CORNER OF GOVT. LOT 3 ACCORDING TO RECORDED PLAT

SOUTH LINE OF GOVT. LOT 3

SOUTH LINE OF BLOCK 24

CENTERLINE OF 20 FT. EASEMENT

S.E. CORNER OF GOVT. LOT 3 AND S.E. CORNER OF BLOCK 26, ACCORDING TO RECORDED PLAT.

EXISTING DRIVEWAY

M.C. PER COUNTY RESURVEY