

CERTIFICATE OF SURVEY

FOR
BONK

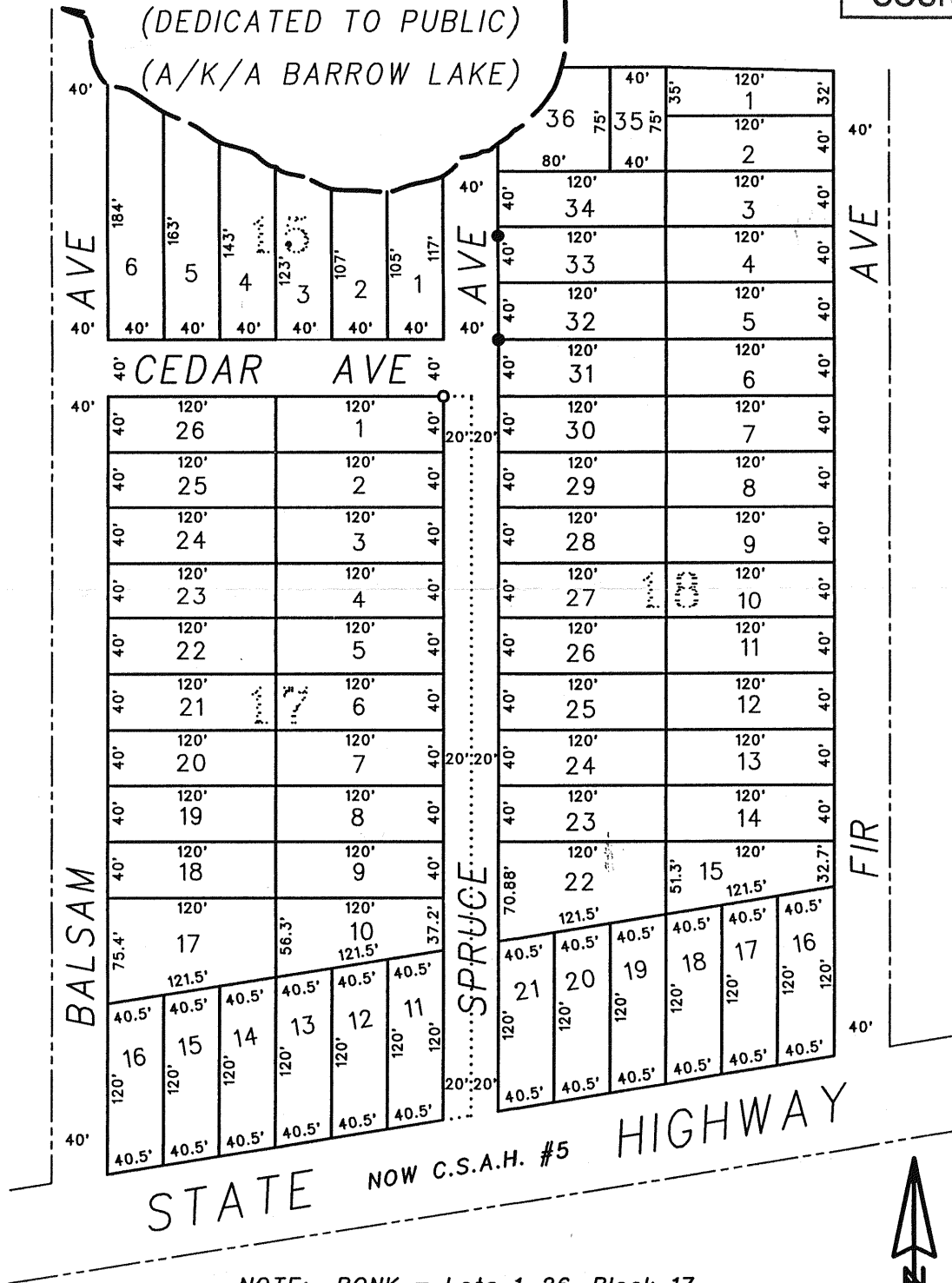
BLOCKS 15, 17 AND 18,
RE-ARRANGEMENT OF BLOCKS IN END OF THE TRAIL
IN SECTION 14, TOWNSHIP 140 NORTH,
RANGE 29 WEST OF THE 5th
PRINCIPAL MERIDIAN IN CASS COUNTY,
MINNESOTA

RECEIVED	#3961
	JUL 25 2008
	GL 4 14-140-29
	COUNTY SURVEYOR

MOFFETT LAKE

(DEDICATED TO PUBLIC)

(A/K/A BARROW LAKE)



NOTE: BONK = Lots 1-26, Block 17
R. ANDERSON = Lots 1, 2, 4, 5
& 6, Block 15
PAUL = Lots 6-31, Block 18
EIDE = Lots 32-36, Block 18

CERTIFICATE OF SURVEY

I, ROGER A. MUSTONEN, HEREBY CERTIFY THAT THIS SURVEY WAS PREPARED BY ME OR UNDER MY DIRECT SUPERVISION AND THAT I AM A DULY REGISTERED LAND SURVEYOR UNDER THE LAWS OF THE STATE OF MINNESOTA.

Roger Mustonen
ROGER A. MUSTONEN, LAND SURVEYOR
MINNESOTA LICENSE 11946

0 60 120 240
SCALE IN FEET
ONE METER = 3.2808333 U.S. SURVEY FEET
1 FOOT = 0.3048006 METERS

AMI SURVEYORS & MAPPERS
1073 COUNTY 5 NW, HACKENSACK, MINNESOTA 56452
PHONE: OFFICE (218) 682 2411 • FAX 682 2988

- DENOTES IRON MONUMENT FOUND
- DENOTES IRON MONUMENT SET (Stamped 11946)