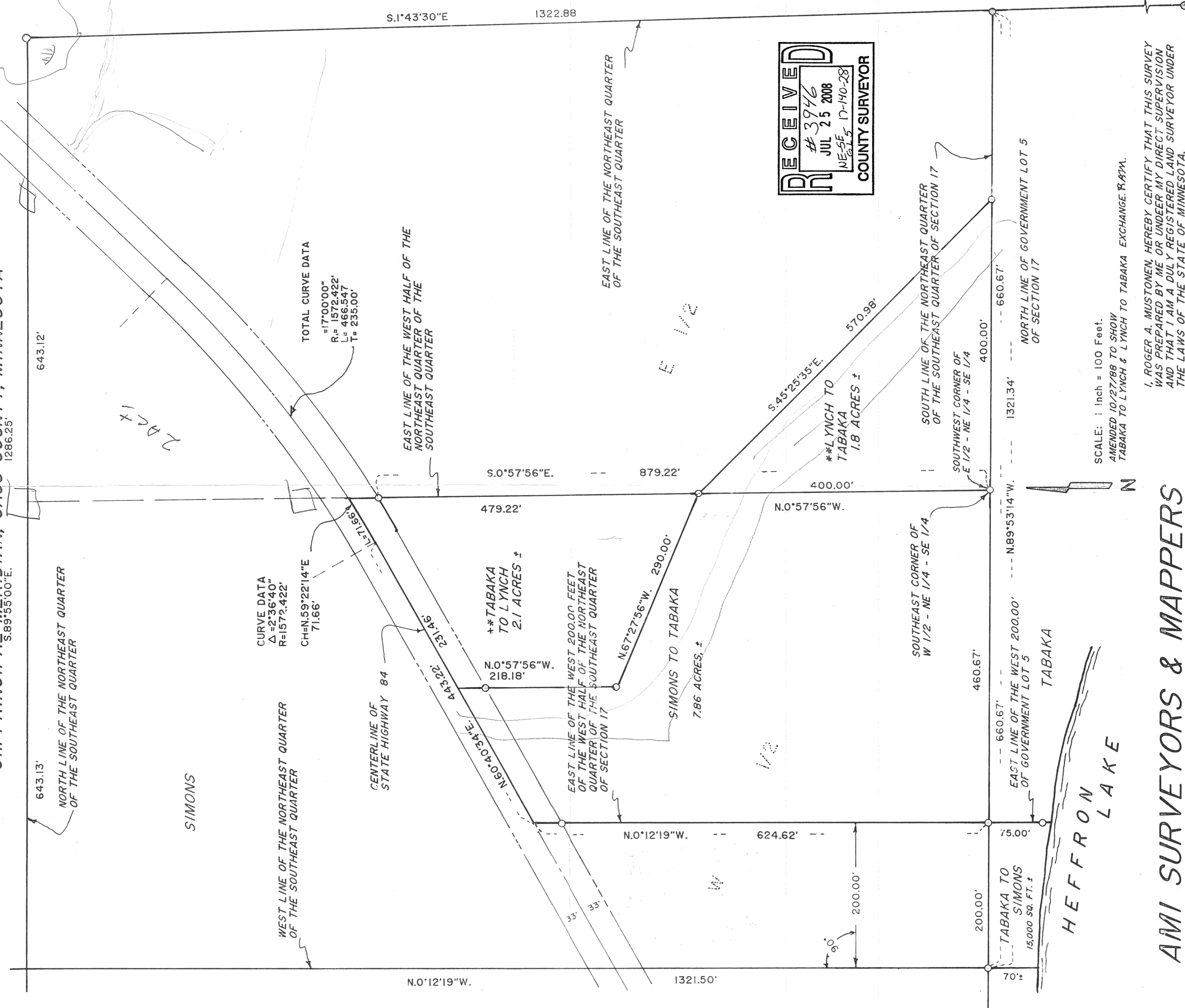


CERTIFICATE OF SURVEY

PART OF THE NORTHEAST QUARTER OF THE SOUTHEAST QUARTER
AND PART OF GOVERNMENT LOT 5, SECTION 17,
TOWNSHIP 140 NORTH, RANGE 28 WEST OF THE
5th PRINCIPAL MERIDIAN, CASS COUNTY, MINNESOTA



CURVE DATA
 $\Delta = 2'36'40''$
 $R = 1572.422'$
 $CH = N.59'22'14''E$
 $71.66'$

TOTAL CURVE DATA
 $\Delta = 17'00'00''$
 $R = 1572.422'$
 $L = 466.547'$
 $T = 235.00'$

RECEIVED
 # 3976
 JUL 25 2008
 NE-SE 17-140-28
 COUNTY SURVEYOR

SCALE: 1 inch = 100 Feet.
 AMENDED 10/27/88 TO SHOW
 TABAKA TO LYNCH & LYNCH TO TABAKA EXCHANGE. R.A.M.

I, ROGER A. MUSTONEN, HEREBY CERTIFY THAT THIS SURVEY
 WAS PREPARED BY ME OR UNDER MY DIRECT SUPERVISION
 AND THAT I AM A DULY REGISTERED LAND SURVEYOR UNDER
 THE LAWS OF THE STATE OF MINNESOTA.

Roger A. Mustonen
 ROGER A. MUSTONEN, RLS 11946

AMI SURVEYORS & MAPPERS

PROFESSIONAL BUILDING - P.O. BOX 403
 LONGVILLE, MINNESOTA 56655