

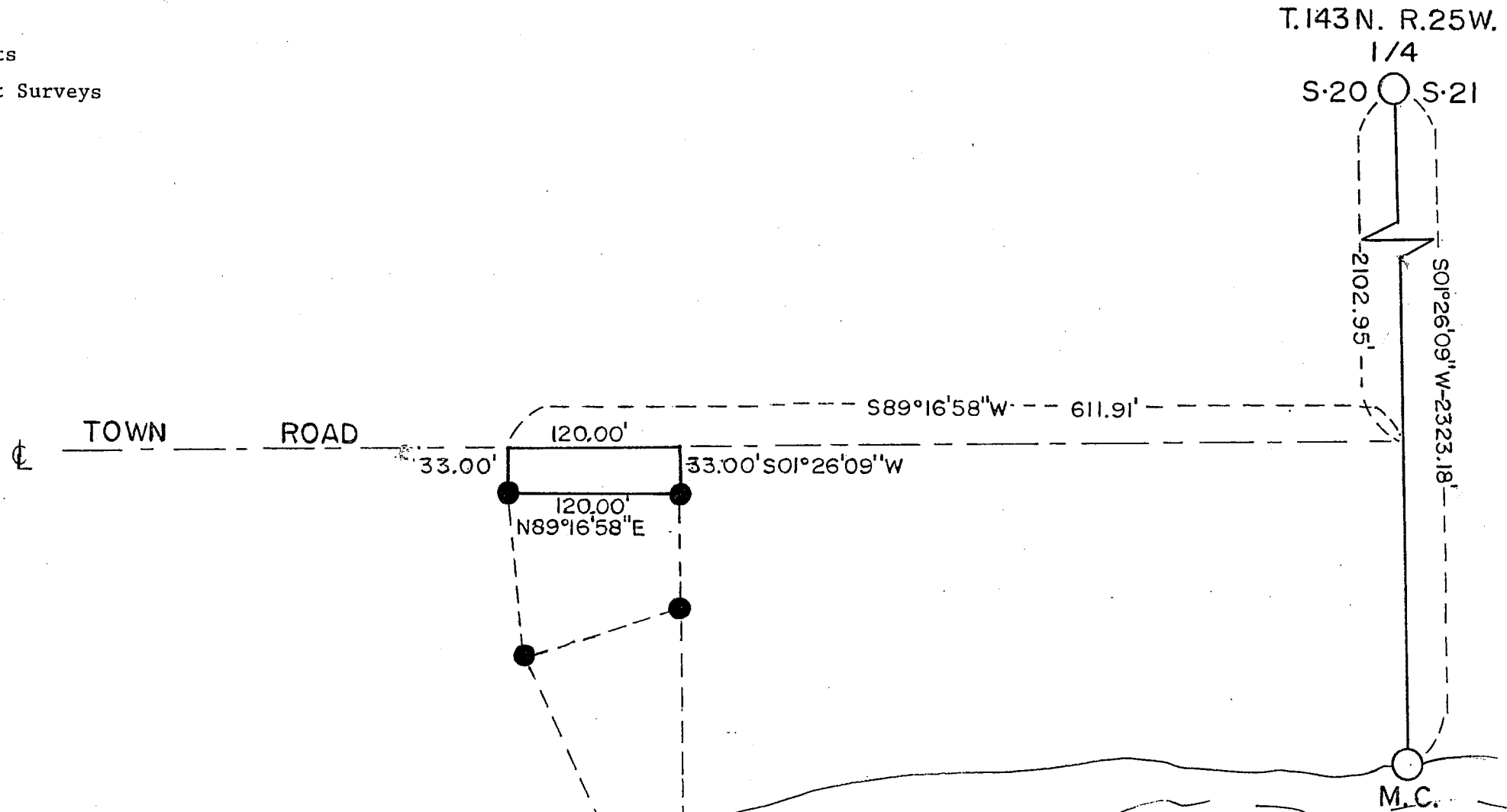
CERTIFICATE of SURVEY

PART OF GOVERNMENT LOT 4, SECTION 20, T143N, R25W OF
THE 5TH PRINCIPAL MERIDIAN
CASS COUNTY, MINNESOTA

LEGEND

- - Found GLO Corner Monuments
- - Found Monuments from Past Surveys

SCALE: 1" = 100'



Surveyors Affidavit:

I, Milo E. Stefan, have drafted this document at the request of Bruce Eckman. This Plat Map is a true and correct representation of previously surveyed lands.

Milo E. Stefan 12/29/07
Milo E. Stefan, Dated



VERMILLION

LAKE

