

D. E. P. SURVEYING

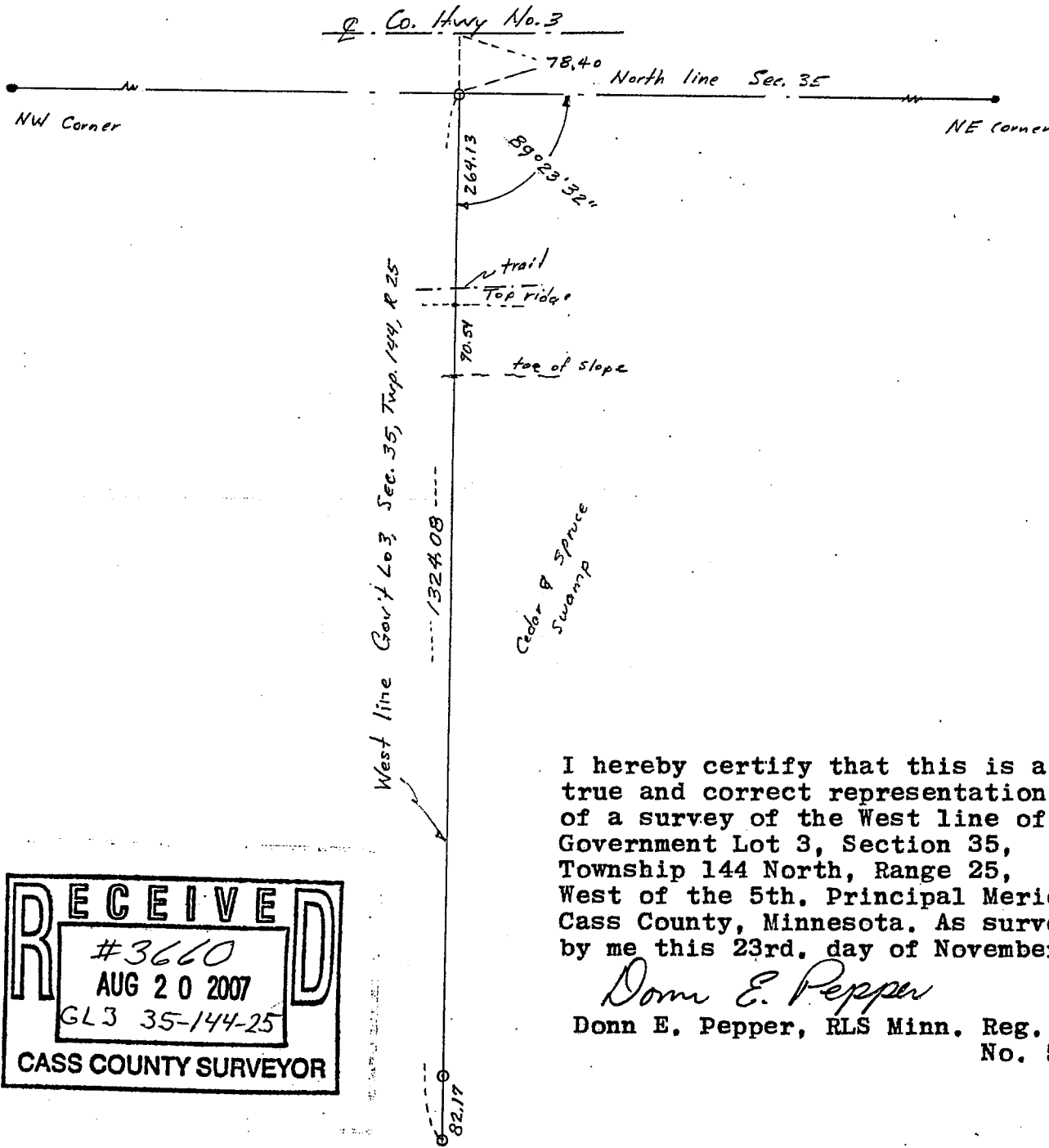
DONN E. PEPPER, Reg. Land Surveyor

Office
1707 NW 4th Street
Grand Rapids, MN 55744
(218) 327-1650

FOR Margaret Smith (Realty Center)



Scale 1"=20'



I hereby certify that this is a true and correct representation of a survey of the West line of Government Lot 3, Section 35, Township 144 North, Range 25, West of the 5th. Principal Meridian, Cass County, Minnesota. As surveyed by me this 23rd. day of November 1982

Donn E. Pepper

Donn E. Pepper, RLS Minn. Reg. No. 5333

RECEIVED	
#3660	
AUG 20 2007	
GL3 35-144-25	
CASS COUNTY SURVEYOR	