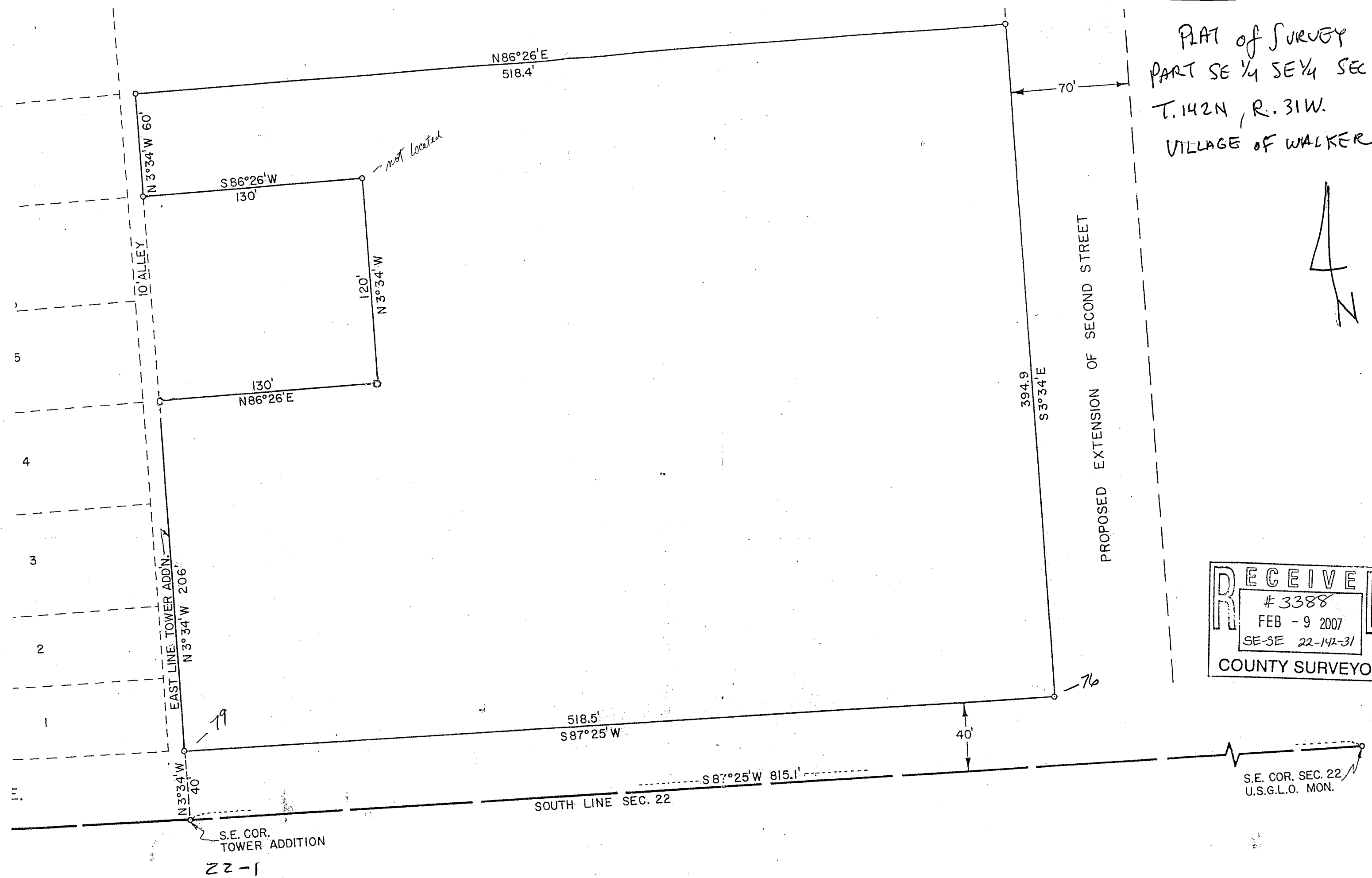


PLAT of SURVEY  
 PART SE 1/4 SE 1/4 SEC 22  
 T. 142N, R. 31W.  
 VILLAGE OF WALKER



RECEIVED  
 # 3388  
 FEB - 9 2007  
 SE-SE 22-142-31  
 COUNTY SURVEYOR



S.E. COR.  
 TOWER ADDITION  
 22-1

S.E. COR. SEC. 22  
 U.S.G.L.O. MON.