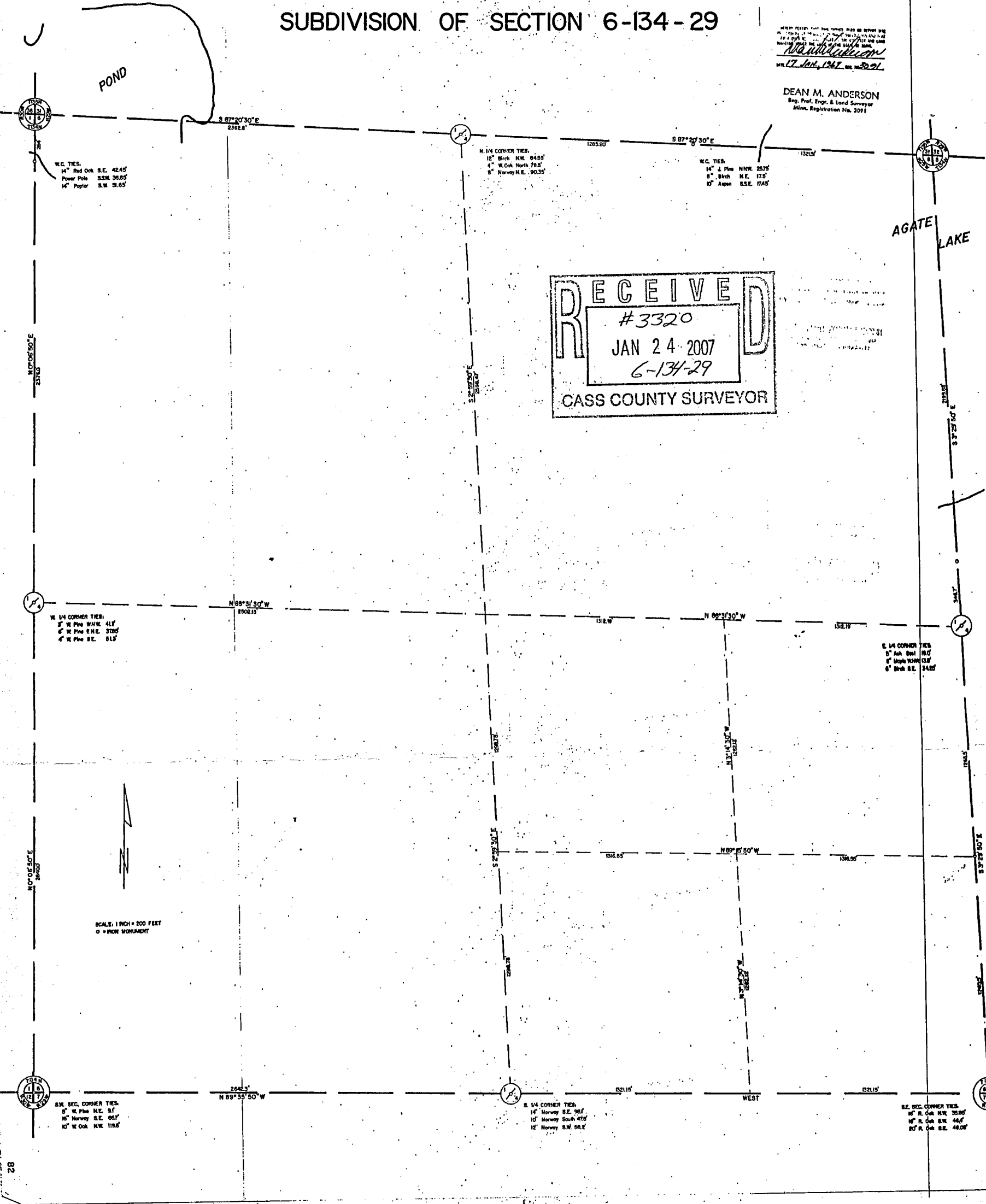


SUBDIVISION OF SECTION 6-134-29

DEAN M. ANDERSON
 Reg. Prof. Engr. & Land Surveyor
 Minn. Registration No. 2091

DEAN M. ANDERSON
 Reg. Prof. Engr. & Land Surveyor
 Minn. Registration No. 2091



POND

AGATE LAKE

RECEIVED
 #3320
 JAN 24 2007
 6-134-29
 CASS COUNTY SURVEYOR

W.C. TIES:
 14" Red Oak S.E. 42.45'
 Power Pole S.W. 36.55'
 14" Poplar S.W. 31.65'

N. 1/4 CORNER TIES:
 12" Birch N.W. 84.85'
 4" W. Oak North 78.5'
 8" Norway N.E. 90.35'

W.C. TIES:
 14" S. Pine N.W. 25.75'
 8" Birch N.E. 17.5'
 12" Aspen S.E. 17.45'

W. 1/4 CORNER TIES:
 3" W. Pine W.W. 41.7'
 4" W. Pine E.N.E. 37.00'
 4" W. Pine S.E. 51.7'

E. 1/4 CORNER TIES:
 3" Ash West 18.0'
 8" Maple West 13.0'
 4" Birch S.E. 14.00'

SCALE: 1 INCH = 200 FEET
 O = IRON MONUMENT

S.W. SEC. CORNER TIES:
 6" W. Pine N.E. 81'
 10" Norway S.E. 95.1'
 10" W. Oak N.W. 115.5'

S. 1/4 CORNER TIES:
 14" Norway S.E. 98.7'
 10" Norway South 47.8'
 12" Norway S.W. 56.2'

S.E. SEC. CORNER TIES:
 10" R. Oak N.W. 35.85'
 10" R. Oak S.W. 44.4'
 20" R. Oak S.E. 48.00'