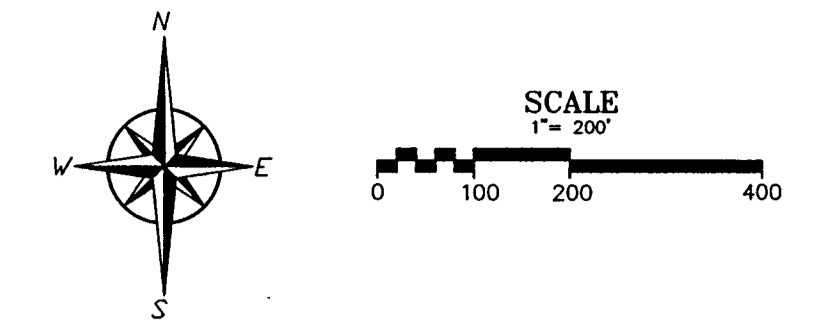


# CERTIFICATE OF SURVEY

LEECH LAKE HOMES IV  
CASS COUNTY, MINNESOTA  
SECTION 5, T144N, R31W



## LEGEND

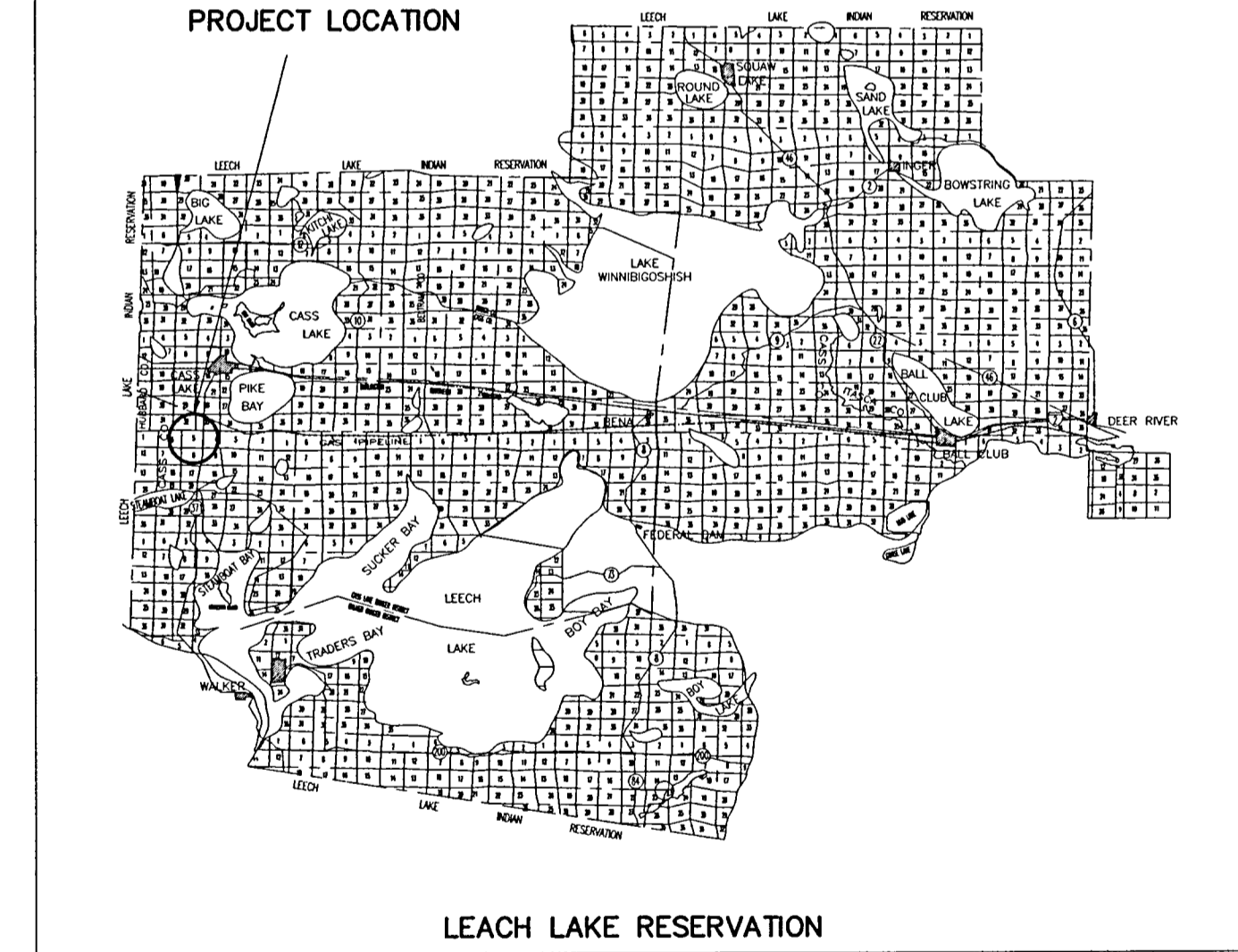
- SECTION LINE
- QUARTER LINE
- SIXTEENTH LINE
- BORDER LINE
- LOT LINE
- IRON MONUMENT SET SET WITH CAP #43804

That part of the Southwest Quarter, South Half of the Northwest Quarter and Southwest Quarter of the Southeast Quarter of Section 5, Township 144 North, Range 31 West of the 5th Principal Meridian, described by metes and bounds as follows:

Commencing at the southwest corner of Section 5, Township 144 North, Range 31 West of the 5th Principal Meridian, thence North 89 degrees 15 minutes 59 seconds East, bearing assumed, along the south line of said Section 5 a distance of 2639.42 feet to the south quarter corner of said Section 5; thence North 89 degrees 15 minutes 30 seconds East along the south line of said Section 5 a distance of 842.18 feet; thence North 00 degrees 00 minutes 00 seconds East a distance of 33.00 feet to the northerly right-of-way line of County Road 145 and the point of beginning of the land to be described; thence North 00 degrees 00 minutes 00 seconds East a distance of 20.94 feet; thence northwesterly a distance of 313.17 feet along a tangential curve concave to the southwest having a radius of 2750.00 feet and a central angle of 65 degrees 14 minutes 54 seconds; thence North 65 degrees 14 minutes 54 seconds West, tangent to said curve, a distance of 167.40 feet; thence South 41 degrees 09 minutes 40 seconds West a distance of 330.16 feet; thence North 37 degrees 48 minutes 38 seconds West a distance of 746.16 feet; thence North 24 degrees 03 minutes 17 seconds West a distance of 394.95 feet; thence westerly a distance of 350.93 feet along a non-tangential curve concave to the north having a radius of 7500.00 feet, a central angle of 26 degrees 48 minutes 32 seconds, and the chord of said curve bears South 76 degrees 33 minutes 43 seconds West a distance of 347.74 feet; thence South 89 degrees 57 minutes 59 seconds West, tangent to said curve, a distance of 11.52 feet; thence North 01 degree 39 minutes 09 seconds West a distance of 223.89 feet; thence North 44 degrees 51 minutes 19 seconds West a distance of 1137.48 feet; thence North 51 degrees 38 minutes 33 seconds East a distance of 136.32 feet; thence North 23 degrees 10 minutes 12 seconds West a distance of 342.77 feet; thence South 68 degrees 12 minutes 18 seconds West a distance of 477.72 feet; thence North 00 degrees 24 minutes 10 seconds West a distance of 742.28 feet; thence North 89 degrees 35 minutes 50 seconds East a distance of 307.18 feet; thence North 01 degree 04 minutes 59 seconds West a distance of 504.06 feet; thence North 44 degrees 51 minutes 19 seconds East a distance of 408.46 feet; thence South 03 degrees 59 minutes 56 seconds West a distance of 286.66 feet; thence South 08 degrees 44 minutes 38 seconds West a distance of 148.49 feet; thence South 39 degrees 50 minutes 01 second East a distance of 1577.27 feet; thence South 47 degrees 02 minutes 20 seconds West a distance of 89.69 feet; thence South 39 degrees 45 minutes 48 seconds East a distance of 217.94 feet; thence North 50 degrees 14 minutes 12 seconds East a distance of 99.66 feet; thence South 47 degrees 48 minutes 03 seconds East a distance of 289.58 feet; thence South 55 degrees 33 minutes 22 seconds East a distance of 268.86 feet; thence South 73 degrees 20 minutes 58 seconds East a distance of 293.80 feet; thence South 60 degrees 59 minutes 12 seconds East a distance of 333.21 feet; thence South 42 degrees 36 minutes 42 seconds East a distance of 295.13 feet to the west line of the Southeast Quarter of the Southeast Quarter of said Section; thence South 00 degrees 51 minutes 18 seconds East along the west line of said Southeast Quarter of the Southeast Quarter, a distance of 100.10 feet; thence South 72 degrees 20 minutes 58 seconds West a distance of 412.85 feet; thence southerly a distance of 111.38 feet along a non-tangential curve concave to the west having a radius of 3750.00 feet, a central angle of 17 degrees 01 minutes 04 seconds, and the chord of said curve bears South 08 degrees 30 minutes 32 seconds East a distance of 110.97 feet; thence South 00 degrees 00 minutes 00 seconds East a distance of 19.65 feet along the right-of-way line of County Road 145; thence South 89 degrees 15 minutes 30 seconds West along said right-of-way, a distance of 100.00 feet to the point of beginning.

- NOTES:
- UTILITIES AVAILABLE.
  - TOPSOIL WAS REMOVED FOR ROAD GRADE OPERATIONS.
  - LOT NUMBERS FOR HOUSING AUTHORITY USE ONLY (NOT LOT, BLOCK #S).
  - TOTAL ACRES: 80.78.
  - ACRES OF ROAD: 12.50.
  - FEMA, UNMAPPED AREA 270631, CASS.
  - POTLATCH CORPORATION RESERVES FOR ITSELF THE RIGHT TO BUILD, CONSTRUCT, MAINTAIN AND USE FOR ANY PURPOSES, ANY NEW OR EXISTING ROAD ACROSS THAT PART OF THE SOUTH HALF OF THE SOUTHEAST QUARTER OF SECTION 5, TOWNSHIP 144 NORTH, RANGE 31 WEST, LYING WEST OF THE WEST BOUNDARY OF THE EXISTING RAIL ROAD RIGHT-OF-WAY TO AND FROM OPERATIONS ON THE NORTH HALF OF THE SOUTHEAST QUARTER, SECTION 5, TOWNSHIP 144 NORTH, RANGE 31 WEST, DOCUMENT #1273, CASS COUNTY.
  - CURRENT BOUNDARY CLASSIFICATION IS FE SIMPLE, IT IS IN THE PROCESS OF BEING CHANGED TO TRUST LAND.

CURVE	RADIUS	LENGTH	TANGENT	DELTA	CHORD	CHORD BEARING
C1	375.00	111.38	56.10	17°01'04"	110.97	N08°30'32"W
C2	375.00	152.08	77.10	23°14'10"	151.04	N08°38'09"W
C3	375.00	162.59	83.12	24°59'40"	162.29	N02°45'04"W
C4	2310.00	222.30	111.24	5°30'50"	222.21	S62°29'29"E
C5	2310.00	334.15	167.37	8°17'17"	333.86	S55°25'26"E
C6	2310.00	337.62	169.11	8°22'27"	337.32	S47°15'34"E
C7	2310.00	78.38	39.19	1°56'39"	78.38	S42°06'32"E
C8	825.00	181.42	91.08	12°35'59"	181.06	S34°49'42"E
C9	825.00	367.25	186.72	25°30'19"	364.23	S15°46'33"E
C10	825.00	43.53	21.77	3°01'23"	43.52	S01°30'42"E
C11	375.00	53.64	26.86	8°11'42"	53.59	N04°05'51"W
C12	375.00	173.51	88.33	26°30'35"	171.96	N01°26'59"W
C13	375.00	196.68	97.45	29°08'00"	188.63	N49°16'16"W
C14	375.00	199.32	102.08	30°27'15"	196.38	N79°03'54"W
C15	275.00	458.18	302.54	95°27'39"	406.99	N47°43'50"W
C16	925.00	238.89	120.11	14°47'49"	238.22	S07°23'55"E
C17	925.00	186.35	93.49	11°32'34"	186.04	S20°34'06"E
C18	925.00	238.75	120.04	14°47'19"	238.09	S33°44'03"E
C19	2410.00	309.71	155.07	7°21'47"	309.50	S44°48'36"E
C20	2410.00	325.87	163.19	7°44'51"	325.63	S32°21'55"E
C21	2410.00	378.92	189.87	9°00'34"	378.57	S60°44'37"E
C22	275.00	313.17	176.03	65°14'54"	296.52	N32°37'27"W
C23	750.00	203.87	102.57	15°34'29"	203.25	N55°22'13"E
C24	750.00	350.93	178.74	26°48'32"	347.74	N76°33'43"E
C25	650.00	480.83	252.01	42°23'01"	469.94	N68°46'29"E



State of MINNESOTA

**NORTHERN ENGINEERING AND CONSULTING, INC.**  
207 4TH ST. NW. BEMIDJI MN 56619 218-444-4000  
WALLACE J. GLADSTONE  
REC. NO. 43804

I HEREBY CERTIFY THAT THIS SURVEY, PLAN OR REPORT WAS PREPARED BY ME OR UNDER MY DIRECT SUPERVISION AND THAT I AM A DULY REGISTERED LAND SURVEYOR UNDER THE LAWS OF THE STATE OF MINNESOTA.

REVISÉ 6/2/05 - CHANGED TRIBAL TO BAND  
REVISÉ 4/20/05 - CORRECTED SPELLING

