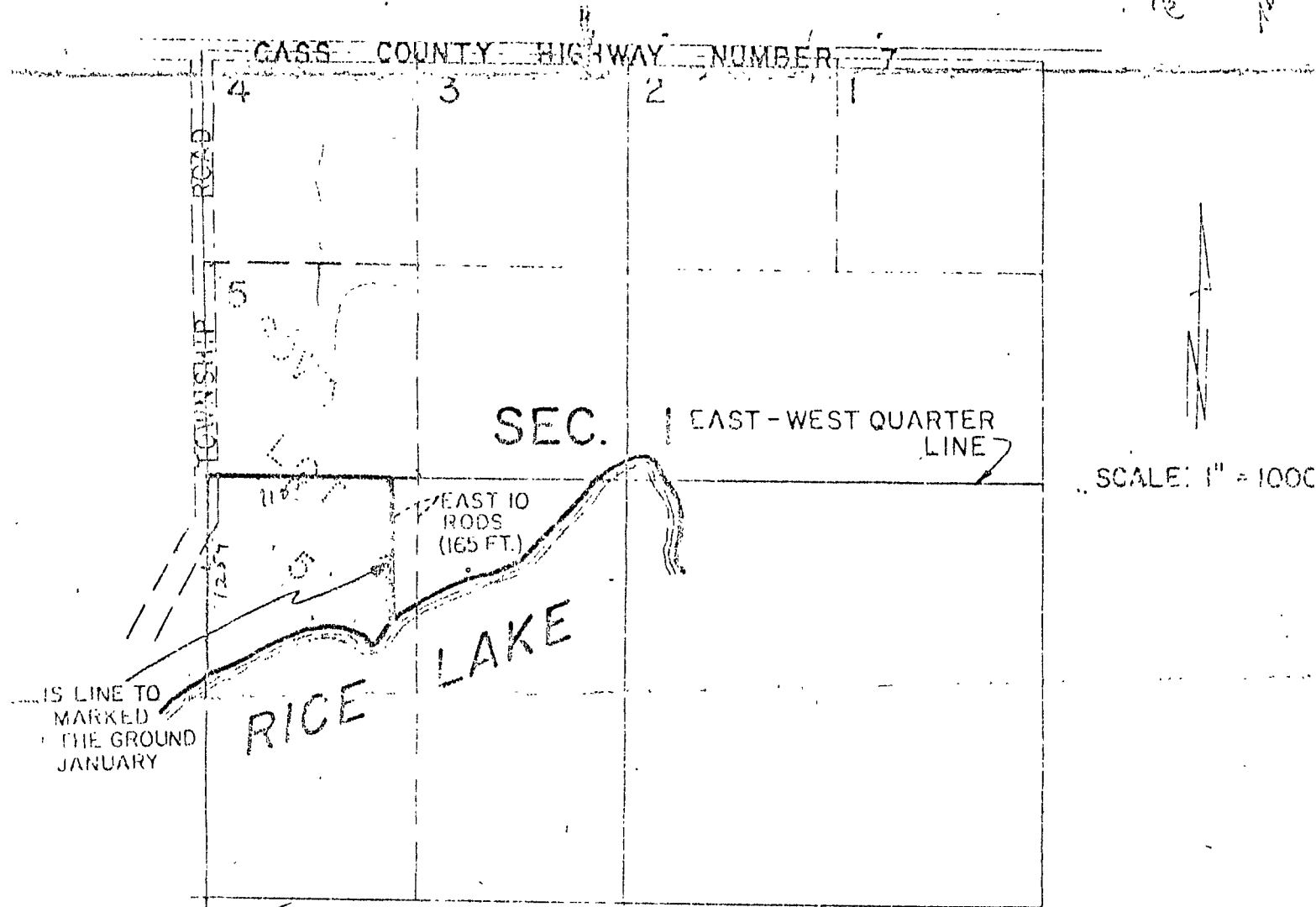
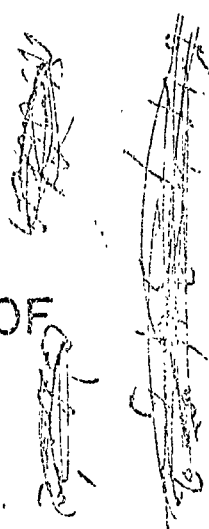


THAT PART OF GOVT. LOT 5  
 SEC. 1, T.140N., R.28W.  
 CASS COUNTY, MINNESOTA  
 LYING AND BEING SOUTH OF THE  
 EAST-WEST QUARTER LINE  
EXCEPT THE EAST 10 RODS THEREOF



*Please note same shape of this parcel on small map I have enclosed. Also nitail D.B. on the map would indicate correct location for them.*

I hereby certify that this map is a true representation of the described portion as shown in document #208781, dated the 2nd of 1978 at the Cass County Recorder's Office.

*Raymond Musloner 12-5-78*