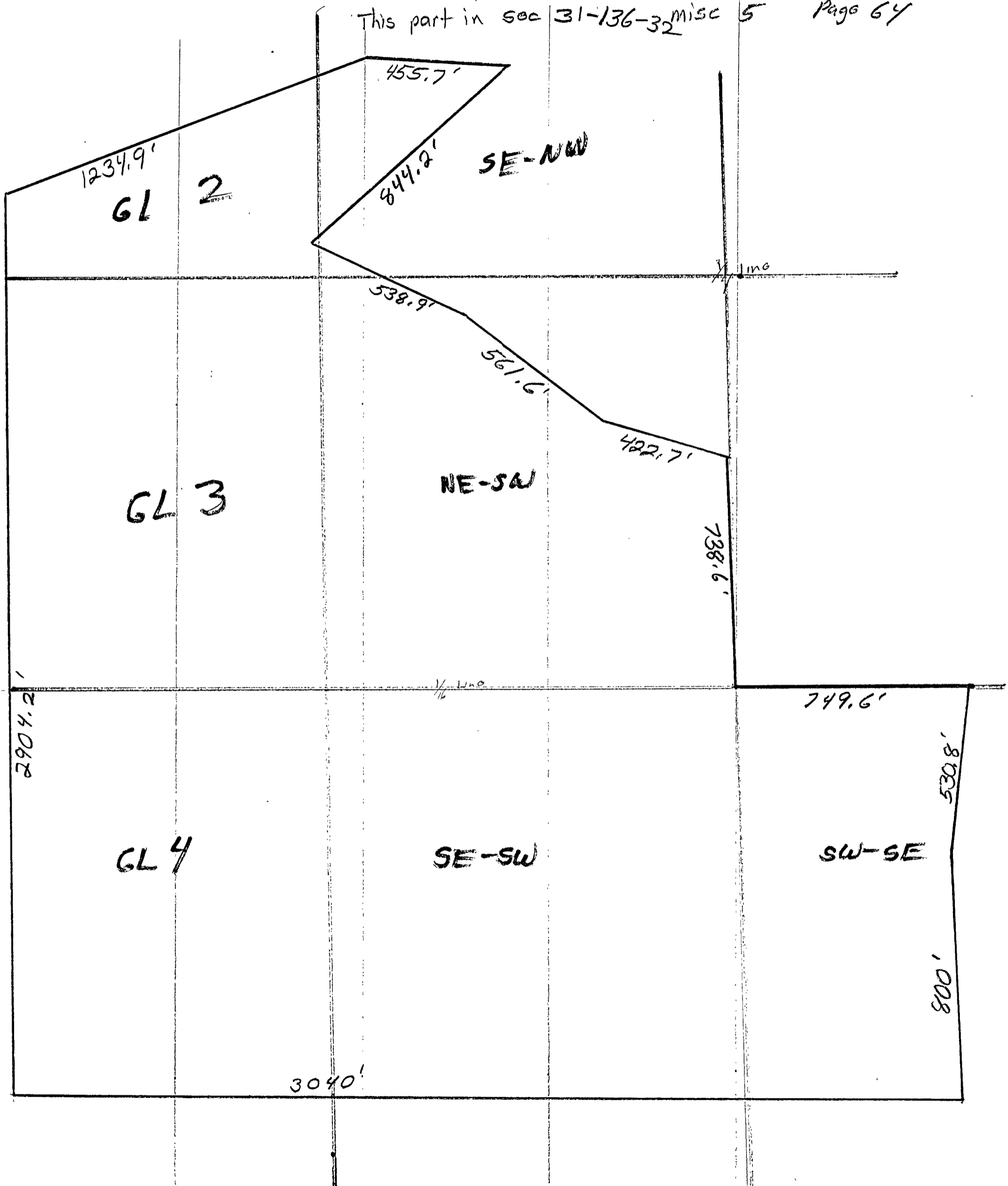
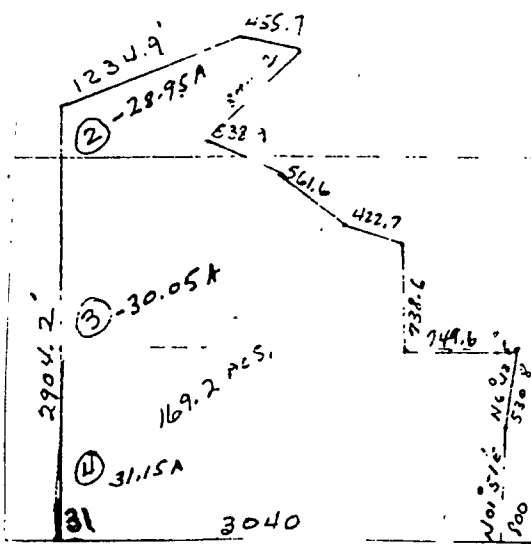


Part of  
Dry Sand Lake  
Wildlife Management Area

Cass County to State DNR 2-5-63

This part in sec 31-136-32 misc 5 Page 64





31 - T. 136 - R. 32

6 - T. 135 - R. 32

LASS COUNTY, MINN.

DRY SAND LAKE

MEANDER TO

D.N.R. - 20. B.M. RES. 61

Poplar

2-5-63

31

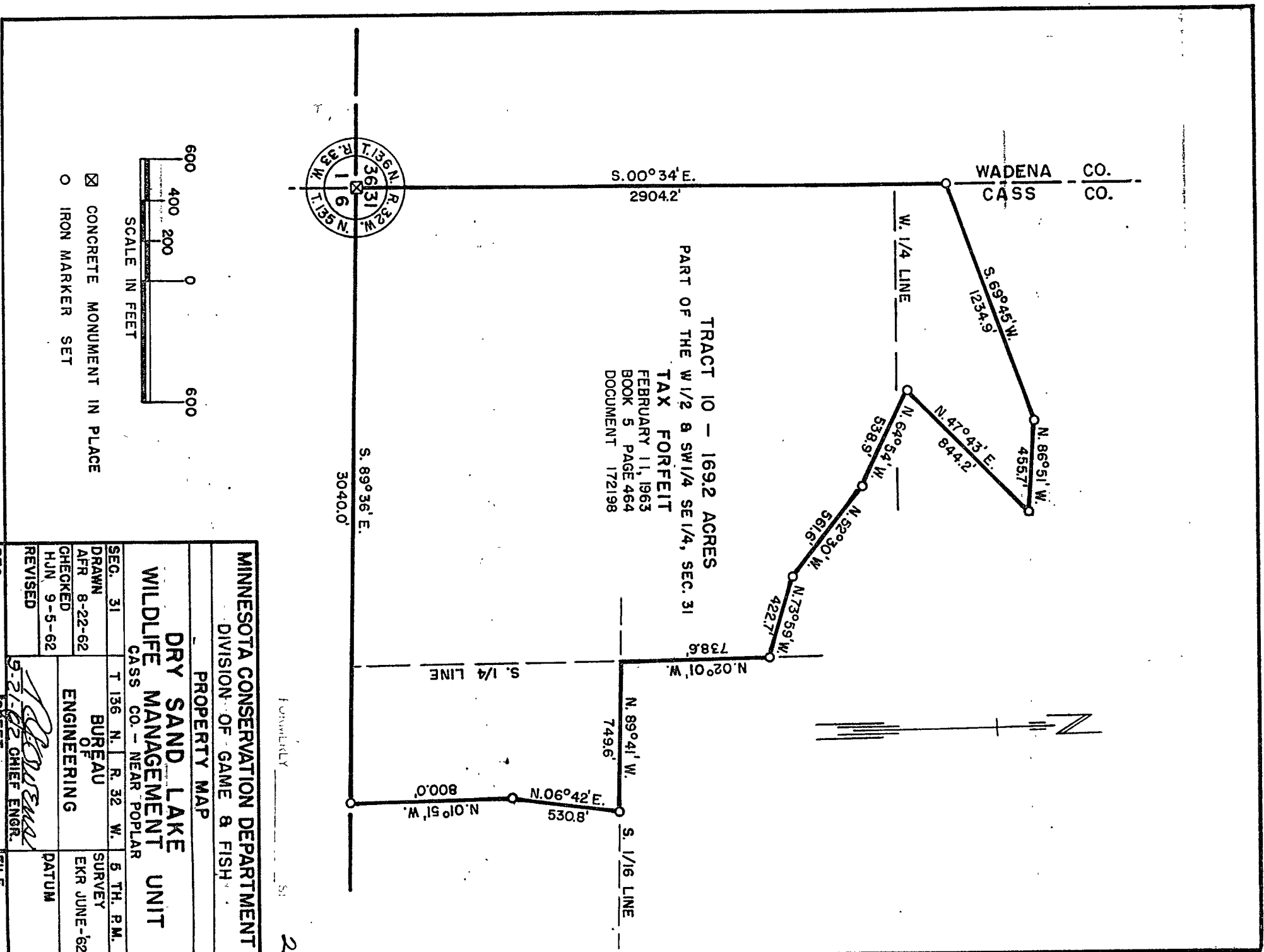
LAND DESCRIPTION  
 DRY SAND LAKE WILDLIFE MANAGEMENT UNIT - CASS CO. - G-406X  
 TRACT 10 - TAX FORFEIT

All that part of the west half and the southwest quarter of the southeast quarter of Sec. 31, Twp. 136 N., R. 32 W. of the 5th P.M. bounded by the following described lines;

Beginning at the southwest corner of said Sec. 31,  
 Thence S. 89°-36' E. - 3040.0 ft. along the south line of said Section 31,  
 Thence N. 01°-51' W. - 800.0 ft.  
 Thence N. 06°-42' E. - 530.8 ft. to the south 1/16 line of said Section 31,  
 Thence N. 89°-41' W. - 749.6 ft. along the south 1/16 line of said Section 31 to the south quarter line thereof,  
 Thence N. 02°-01' W. - 738.6 ft. along the south quarter line of said Section 31,  
 Thence N. 73°-59' W. - 422.7 ft.  
 Thence N. 52°-30' W. - 561.6 ft.  
 Thence N. 64°-54' W. - 538.9 ft.  
 Thence N. 47°-43' E. - 844.2 ft.  
 Thence N. 86°-51' W. - 455.7 ft.  
 Thence S. 69°-45' W. - 1234.9 ft. to the west line of said Section 31,  
 Thence S. 00°-34' E. - 2904.2 ft. along the west line of said Section 31 to the southwest corner thereof and the point of beginning;

Including all riparian rights to the contained 169.2 acres more or less and subject to existing road easements.

RJO:reg  
 9/21/62  
 Checked: HRP/9-21-62



MN/DNR

N.E. Cor Sec 36 - 136-33

Ac. T.P. S.E. - 42.2'

B.E. P.P. N.W. - 58.1'

Jarvis Rock - closes side - S.W. 59.0'

NE cor Sec 36 - 136-33

4' g.P. in place

B.C. 10" g. P. W.E. S.W. 57.9

B.C. Cor Fa. Post N. - 26.9

S.W. Cor Sec 36 - 136-33

Assumed spot in N.S.W. Rd -

B.C. N. 80 to Post NE 56.9'

B.C. Jarvis Rock Fa. Post ESE 26.4'

B.C. Cor Fa. Post SW - 47.1'

KA Δ 1			
BS Δ 2	270-00	5276.9	
TO Δ 3	180-00	5280.0	
TO Δ 3A	179-26	5288.7	
TO Δ 4	89-51	967.3	
KA Δ 4			
BS Δ 1	269-51		
TO Δ 5	32-29	275.2	
KA Δ 5			
BS Δ 4	212-25		
TO Δ 6	42-40	209.1	
KA Δ 6			
BS Δ 5	222-40		
TO Δ 7	101-44	386.3	
KA Δ 7			
BS Δ 6	281-44		
TO Δ 8	351-09	1114.1	

N.E. cor. Sec 36.

I.P. in place

N.W. cor. Sec 36.

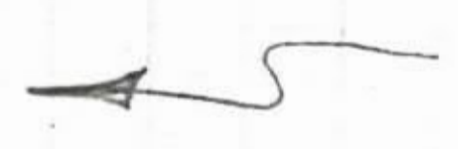
I.P. in place

Random line. To S.E. cor. Sec 36.

Corrected line to concrete monument to S.E. cor. 36.

P.O.T. To N.E. cor. Sec 36.

Random line



Stations

75-251  
25-AM

Ref 8				
BS Δ 7	171-09			
TO Δ 9	46-10	592.1		
Ref Δ 9				
BS Δ 8	226-10			
TO Δ 10	54-42	435.2		
Ref Δ 10				
BS Δ 9	234-42			
TO Δ 11	133-37	845.0		
Ref Δ 11				
BS Δ 10	313-37			
TO Δ 12	105-24	501.0		
Ref Δ 12				
BS Δ 11	285-24			
TO Δ 13	111-25	711.0		
Ref Δ 13				
BS Δ 12	291-25			
TO Δ 14	144-45	599.1		

Main dam  
Points

Not Δ 14			
BS Δ 13	324-95		
To Δ 15	151-06	388.5	
Not Δ 15			
BS Δ 14	331-06		
To Δ 16	126-39	455.8	
Not Δ 1			
To Δ 16	89-57	4901.8	

computed

4741.0

8

IRON PIPE IN PLACE  
 N.E. COR. SEC. 36  
 N.E. COR. SEC 31  
 Closure sheet

Not Δ 3A  
 BS Δ 1 359-26 5288.7  
 TO 17 90-00 2562.5  
 TO 18 112-26  
 computed distance

Not 18  
 BS Δ 3A 292-26  
 TO Δ 17 30-14 987.0

Not Δ 17  
 BS Δ 3A 270-00 2562.5  
 TO Δ 19 90-00 2178.5

Not Δ 19  
 BS Δ 17 270-00 2178.5  
 TO Δ 10 97-00 282.1

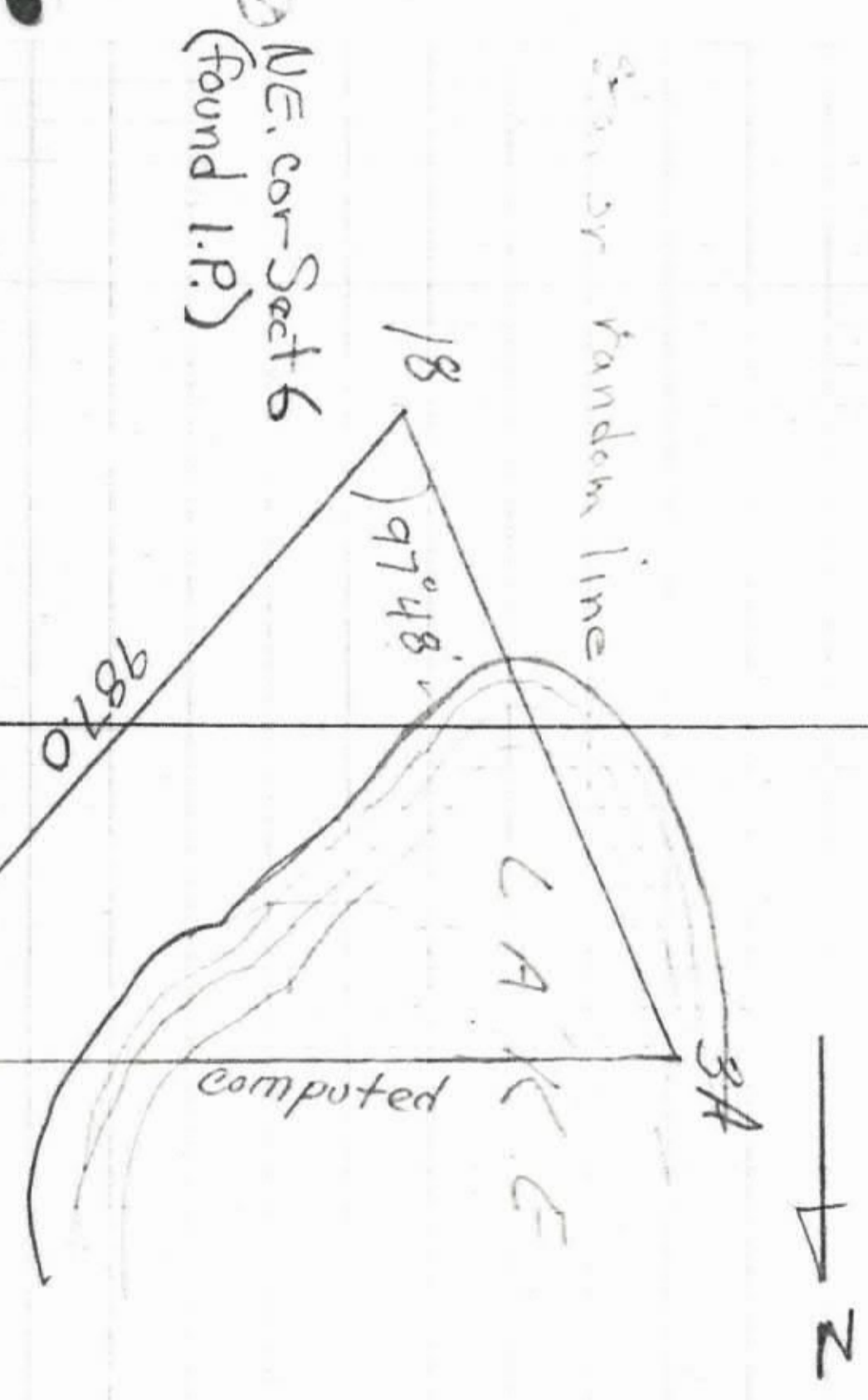
Not Δ 3A  
 TO Δ 20 90-24 5020.0  
 computed

KA 20  
 BS Δ 38 270-24  
 TO Δ 44 183-10 2724.0

S.W. cor. Sect 31 concrete monument  
 N.W. cor Sect 31  
 " "

tria. Sta.

sta. on random line



S.W. Cor. Sect. 31  
 N.E. Cor. Sect 6

Old Pa. Cor ASSUMED E  
 Note No S.E. Cor  
 found W.C. point  
 111 yds from well  
 cor. Sect. and N. 87°



Not 17A				
BS Δ 3A	270-24	2562.5		
To Δ 21	90-24	477.5		
To Δ 22	90-24	1137.2		
Not Δ 21				
BS Δ 17A	270-24	477.5		
To Δ 23	358-09	800.0		
To Δ "X"	270-24	660.0	S. 1/4 cor Sect 81	
Not Δ 23				
BS Δ 21	178-09			
To Δ 24	6-42	530.8		
Not Δ 24				
BS Δ 23	186-42			
To Δ 25	270-17	740.0		
To Δ 26	334-49	392.2		
Not Δ 26				
BS Δ 24	154-49			
To Δ 27	311-57	486.1		

US 1

(set I.P.)  
Corrected line on South line Sect 31

Set I.P.  
Set. I.P. S. 1/4 cor. of S. E. 1/4 of Sect 31

Set I.P. Property corner  
in water (computed)

Set I.P.

1/4 cor S. 1/4 line (in Lake)  
Set I.P.

Set I.P.

Not A 27	131-57	
BS Δ 26	284-11	239.8
To Δ 28		
Not A 28		
BS Δ 27	104-11	
To Δ 29	285-57	437.8
To Δ 25	178-09	734.7
To Δ "X"	178-09	2062.1
Not 29		
BS Δ 28	105-57	
To Δ 30	307-30	561.6
Not Δ 30		
BS Δ 29	127-30	
To Δ 31	295-06	538.9
Not Δ 31		
BS Δ 80	115-06	
To Δ 32	47-43	844.2
Not Δ 32		
BS Δ 31	227-43	
To Δ 33	273-09	455.7

Computed distance  
"

Set I.P. N-S. Y line Sect 31

Set I.P.  
in water  
in water  
in water  
Assume 5' corner 31

Set I.P.

Set I.P.

Set I.P.

Set I.P.

No. 1 Δ 33  
 BS Δ 32 93.09  
 TO Δ 34 249.45 1234.9

No. 2 Δ 34  
 BS Δ 33 69.45  
 TO Δ 3A 179.26 2904.2

No. 3 Δ 2  
 BS Δ 1 90.00 5276.9  
 TO Δ 35 180.00 5278.7

No. 4 Δ 35  
 BS Δ 2 380.00 5278.7  
 TO Δ 32 90.00 5329.2

$T_r = 12$

BS Δ 1 359.26 5288.7  
 TO Δ 36 359.26 660.0  
 TO Δ 37 270.00 660.0

No. 5 Δ 37  
 BS Δ 32 90.00 660.0  
 TO Δ 36 44.46 927.8

Computed Dis @ Angle:

Set I.P. on W. Line Sect 31

SE. cor. Sect. 31

NW. cor. Sec 36  
 NE. cor. Sec 36  
 SW. cor. Sec 36

SET I.P.  
 SET I.P.

N 432	359.26	5282.7
To L 58	179.29	2024.6
To L 39	179.29	5385.8
N 432		
To L 40	98.24	1959.2
N 440		
To L 41	179.29	658.2
N 441		
To L 42	98.24	640.8
N 442		
To L 43	179.29	2700.0
N 443		
To L 44	98.24	569.0

NW cor Dec 6 - 135-32

Set I.P. S.W. cor To 10<sup>2</sup> Dec 6 - 135-32  
 Found old corner post in swamp S.W. cor Dec 6.

26 02.8  
 2024.6  
 657.5 = 5576.2  
 1931 - 13

Set I.P.

500 I.P.

Set I.P.

Note Randon Line  
 Trying to locate  
 S.E. cor Dec 6 135-32  
 At Windward  
 found 10<sup>2</sup> corner

P.O.T.

NA 44				
BSA 40	210.00	203.00		
To A 45	89.48	2100.0		
NA 20				
BSA 23	273.21	1300.0		
To A 46	173.10	1445.8		
To A 47	113.00	2745.8		
To A 48	183.10	1300.0		
NA 30				
BSA 38	179.24	2000.6		
To A 38	179.24	2825.9		
To A 22	90.24	3399.7		
NA 22				
BSA 30	270.24	3399.7		
To A 49	182.15	1463.3		
NA 49				
BSA 22	2.15	1463.3		
To A 50	243.42	1463.4		

←

P.O.T

US. The Fig. on N.E. & S.E. ...  
 Very old house on ...  
 Court ...

Forest N.E. W. ...

Set T.P. ...

Note: Typed to ...  
 localities ...  
 ...

NA50	69.29	1465.4
B5A49	181.20	680.3
To A 52	181.20	118.0
NA 51		
B5 A 50		
To A 53	270.00	342.4
NA 53		
B5 A 52		
To A 40	359.29	264.4

Get TR Prop...

I.P.

Kata 95	26-46	290.2
BS Δ 92	<del>25-55</del>	
To Δ 84	236-46	166.0
Kata 454	<del>237-39</del>	
BS Δ 83	57-38	
To Δ 23	<del>178-11</del>	55.4
	178-11	

Δ 21

OR  
 off 178-09  
 CHANGED BY DTC  
 7/6/82

THIS WAS A DIFFICULT JOB! THE HEAVY  
 MOSQUITOES & MILES OF BRUSHING  
 WERE SOMETHING ELSE.

S. Carlson 6/3/81

17800 23  
 17200