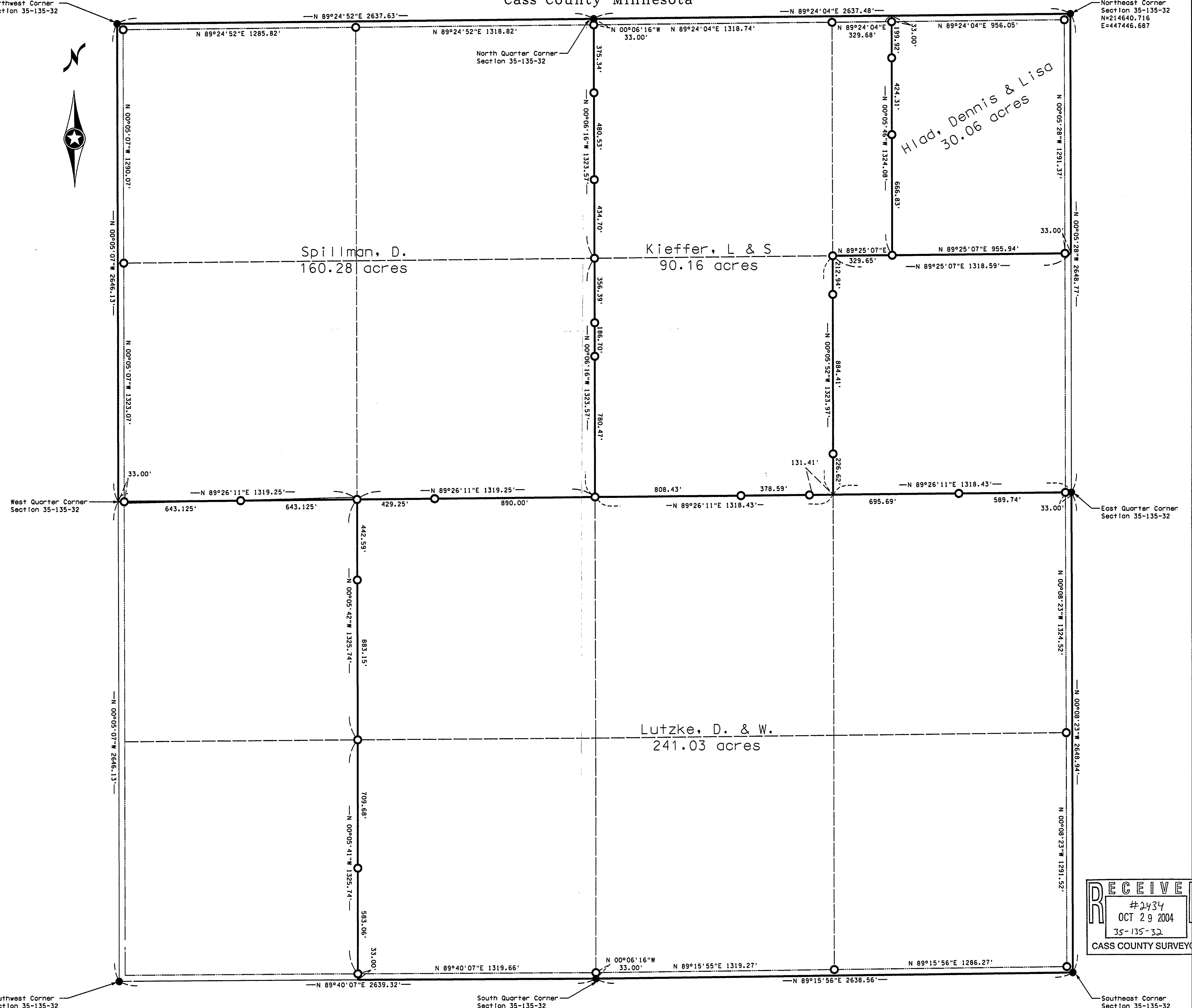


Certificate of Survey

Section 35, Township 135 North, Range 32 West,
Cass County Minnesota

Northwest Corner
Section 35-135-32

Northeast Corner
Section 35-135-32
N=214640.716
E=447446.687



West Quarter Corner
Section 35-135-32

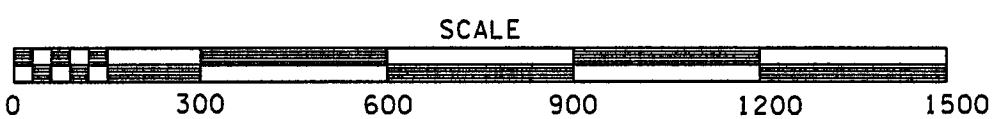
East Quarter Corner
Section 35-135-32

Southwest Corner
Section 35-135-32

Southeast Corner
Section 35-135-32

- Denotes an Iron Monument Found Inplace
- Denotes an Iron Monument set, marked RLS 42619

Orientation of this Bearing System Is the North American Datum of 1983



RECEIVED
 #2434
 OCT 29 2004
 35-135-32
 CASS COUNTY SURVEYOR

No.	Date	REVISIONS	Survey By:	I HEREBY CERTIFY THAT THIS PLAN, SURVEY, OR REPORT WAS PREPARED BY ME OR UNDER MY DIRECT SUPERVISION AND THAT I AM A DULY REGISTERED LAND SURVEYOR UNDER THE LAWS OF THE STATE OF MINNESOTA. Signature: <i>Jarrett M. Leas</i> Date: <i>4/26/04</i> Jarrett M. Leas, MN License No. 42619
			MS	
			Drawn By: JL	
			Checked By: JK	
PROJECT NO. Lutzke.04.001				KRAMER · LEAS · DELEO LAND SURVEYING SERVICES P.O. BOX 9897 St. Cloud, MN 56302-0987 (763) 639-0333