

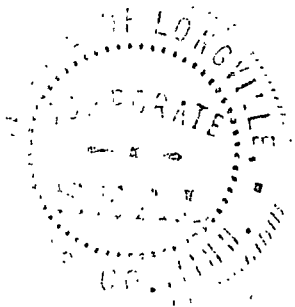
County

CERTIFICATE OF SURVEY

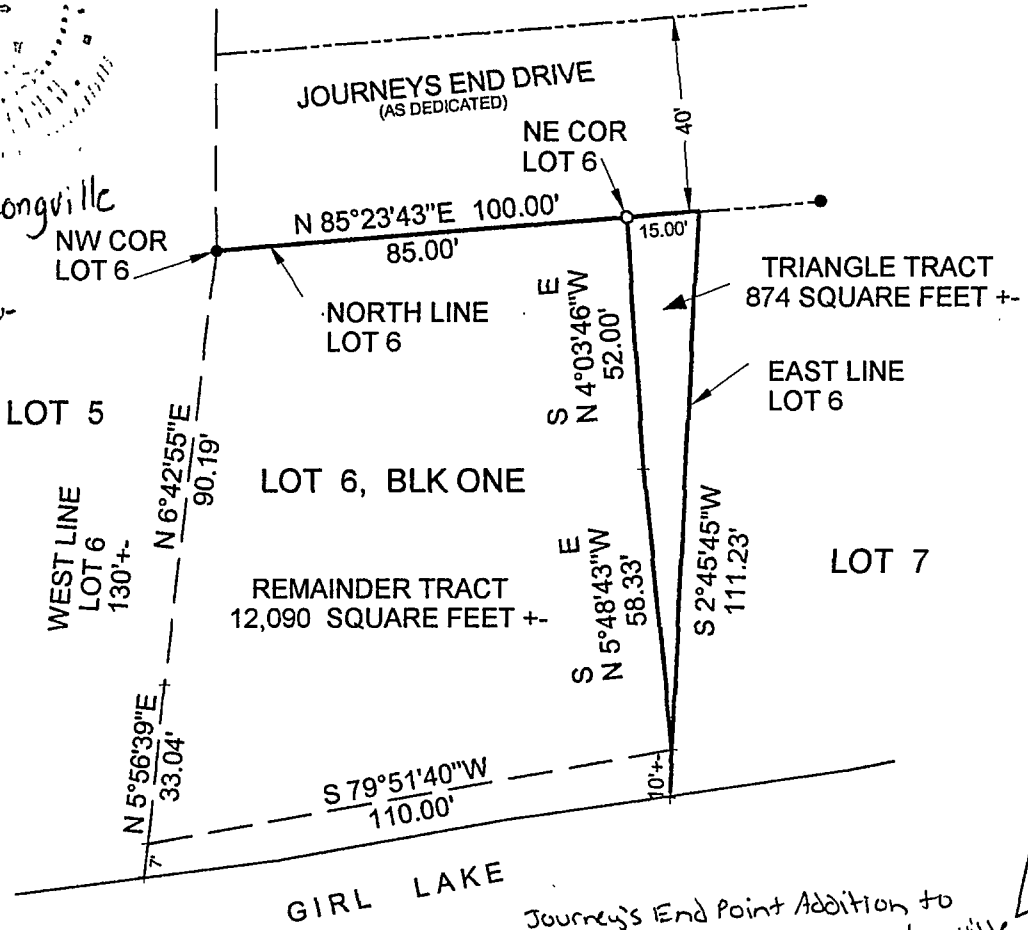
for

GILSRUD

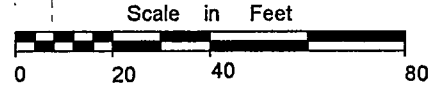
PART OF LOT 6, BLOCK ONE,
JOURNEY'S END POINT ADDITION



OK City of Longville
Arlene Schossow
City Clerk
7-29-04



Journey's End Point Addition to Longville
 RECEIVED
 #2398
 AUG 12 2004
 33-141-28



ONE METER = 3.2808333 U.S. SURVEY FEET
 ONE FOOT = 0.3048006 METERS
 INITIAL BEARING ASSIGNED

• Denotes Iron Monument Found

I, ROGER A. MUSTONEN, HEREBY CERTIFY THAT THIS SURVEY WAS PREPARED BY ME OR UNDER MY DIRECT SUPERVISION AND THAT I AM A DULY LICENSED LAND SURVEYOR UNDER THE LAWS OF THE STATE OF MINNESOTA.

AMI SURVEYORS & MAPPERS
 1073 COUNTY 5 NW HACKENSACK, MINNESOTA 56452
 PHONE: OFFICE 218/682-2411 * FAX 682-2988

Roger A. Mustonen 7-27-2004
 ROGER A. MUSTONEN, PLS
 MINNESOTA LICENSE 11946