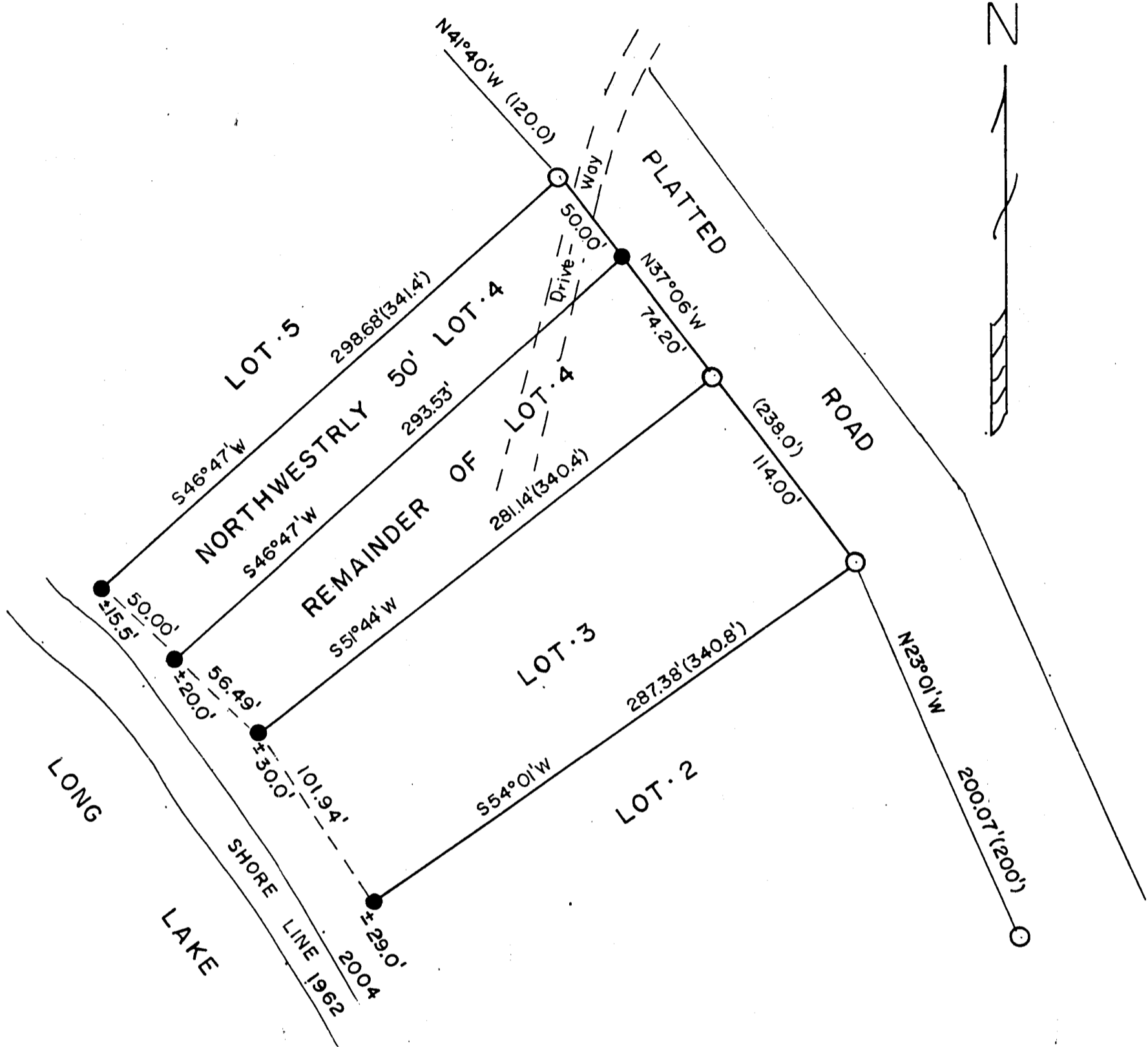


CERTIFICATE of SURVEY

BEING LOTS 3 AND 4 OF "HOLIDAY ACRES" PLAT IN GOVERNMENT LOT 6,
TOWNSHIP 141 NORTH, RANGE 27 WEST OF THE 5TH PRINCIPAL MERIDIAN
CASS COUNTY, MINNESOTA



Surveyors Affidavit:
I, Milo E. Stefan, a Registered Land Surveyor (RLS# 12261) in the State of Minnesota, and at the request of David and Susan Southwick, have located and restored the corners to Lots 3 and 4. I have also divided Lot 4 into the Northwestery 50 feet and the remainder as indicated by this plat drawing to the best of my abilities.

Milo E. Stefan
Milo E. Stefan
RLS# 12261

6/8/04
Dated

LEGEND

- - Found Corners of Holiday Acres Plat
- - Set 1/2" x 24" Re-bar With Plastic Cap
- (III.1) - Data from Holiday Acres Plat

SCALE: 1" = 60'

