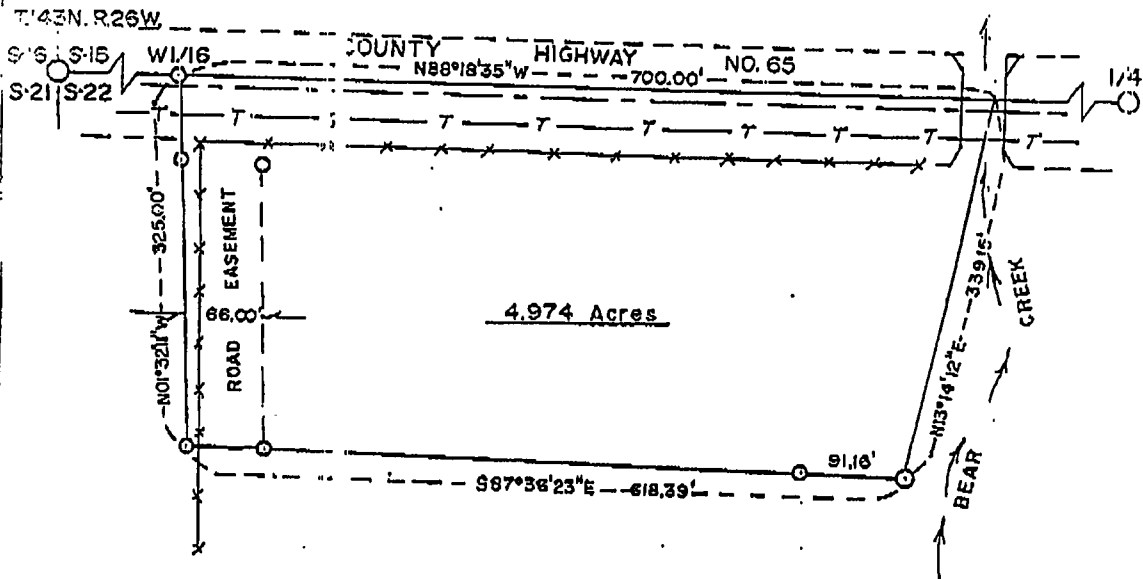


County Copy

CERTIFICATE of SURVEY

SOUTH PART OF THE NE 1/4 OF SECTION 22, TOWNSHIP 143 NORTH,
RANGE 26 WEST OF THE 5TH PRINCIPAL MERIDIAN
CASS COUNTY, MINNESOTA



Surveyors Affidavit:

I, Milo E. Stefan, RLS #12261, a Registered Land Surveyor in the State of Minnesota, have surveyed and marked a parcel in the NE 1/4 of Section 22, T143N, R26W of the 5th Principal Meridian. This Flat Map is a true and correct representation of the lands surveyed and marked to the best of my abilities.

Milo E. Stefan _____ 10/27/03
Milo E. Stefan Dated
RLS #12261

LEGEND

- - GLO Monuments
 - - Set PK Nail in Highway
 - - Set 1/2" x 24" Re-bar
 - - Set 1" x 33" Iron Pipe
 - *-*-* - Fence Line
 - T- - Transmission Line, 50' Right-of-Way
 - - - - County Highway #65 Centerline
- SCALE: 1" = 100'
Bearing from U.S. Forest Service Survey



RECEIVED
NOV 21 2003
COUNTY SURVEYOR

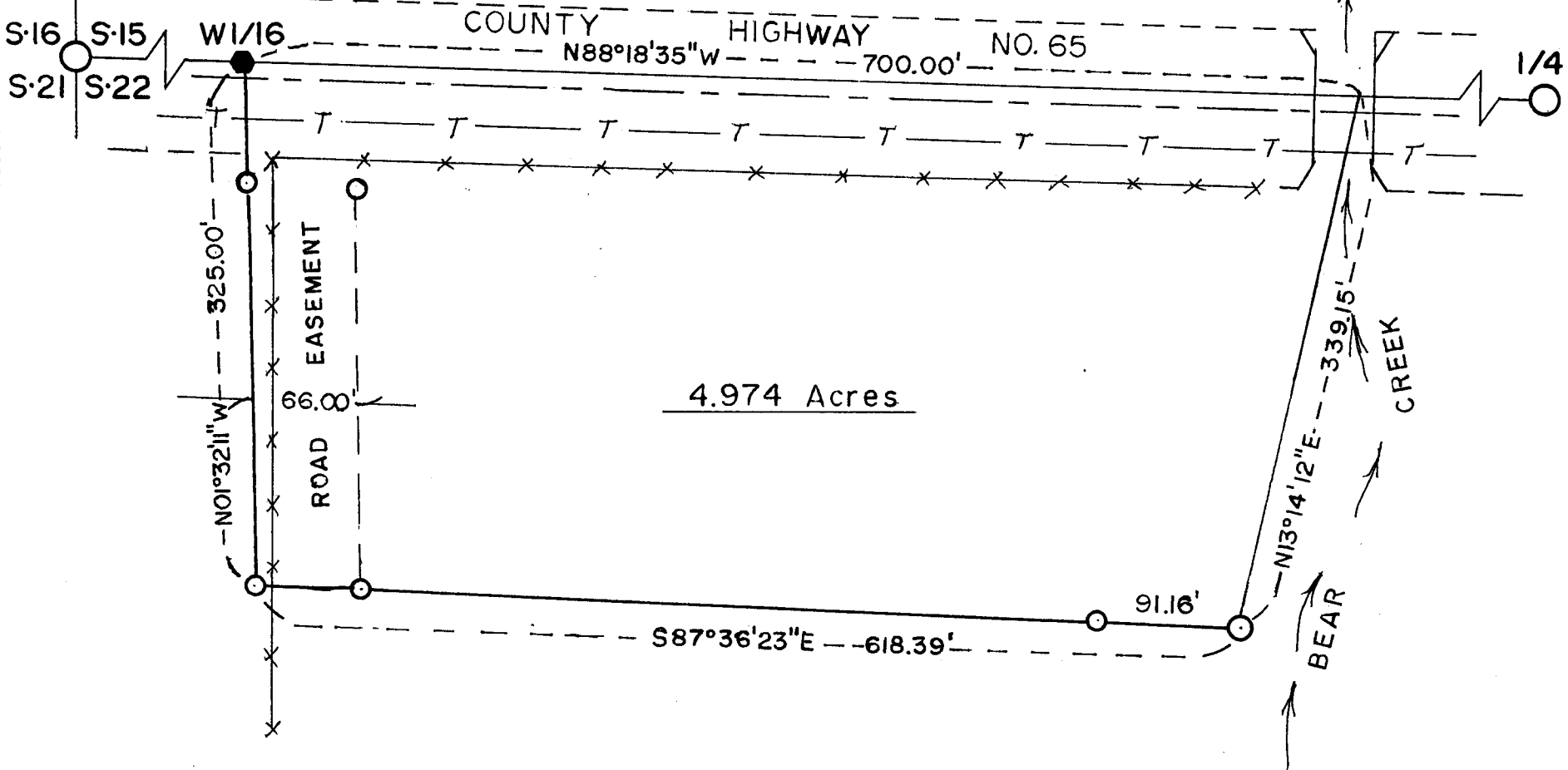
A362

CERTIFICATE of SURVEY

BEING PART OF THE NE $\frac{1}{4}$ NW $\frac{1}{4}$ OF SECTION 22, TOWNSHIP 143 NORTH,
RANGE 26 WEST OF THE 5TH PRINCIPAL MERIDIAN
CASS COUNTY, MINNESOTA

Ties to West 1/16 Corner
Transmission Pole #143
S60°W, 68.33"
6" Black Ash, N6°W, 74.65'

T.143N. R.26W.



Surveyors Affidavit:

I, Milo E. Stefan, RLS #12261, a Registered Land Surveyor in the State of Minnesota, have surveyed and marked a parcel in the NE $\frac{1}{4}$ NW $\frac{1}{4}$ of Section 22, T143N, R26W of the 5th Principal Meridian. This Plat Map is a true and correct representation of the lands surveyed and marked to the best of my abilities.

Milo E. Stefan
Milo E. Stefan
RLS #12261

10/27/03
Dated

LEGEND

- - GLO Monuments
- - Set PK Nail in Highway
- - Set 1/2" x 24" Re-bar
- - Set 1" x 33" Iron Pipe
- * * * - Fence Line
- T — - Transmission Line, 50' Right-of-Way
- — — - County Highway #65 Centerline

SCALE: 1" = 100'

Bearing from U.S. Forest Service Survey

