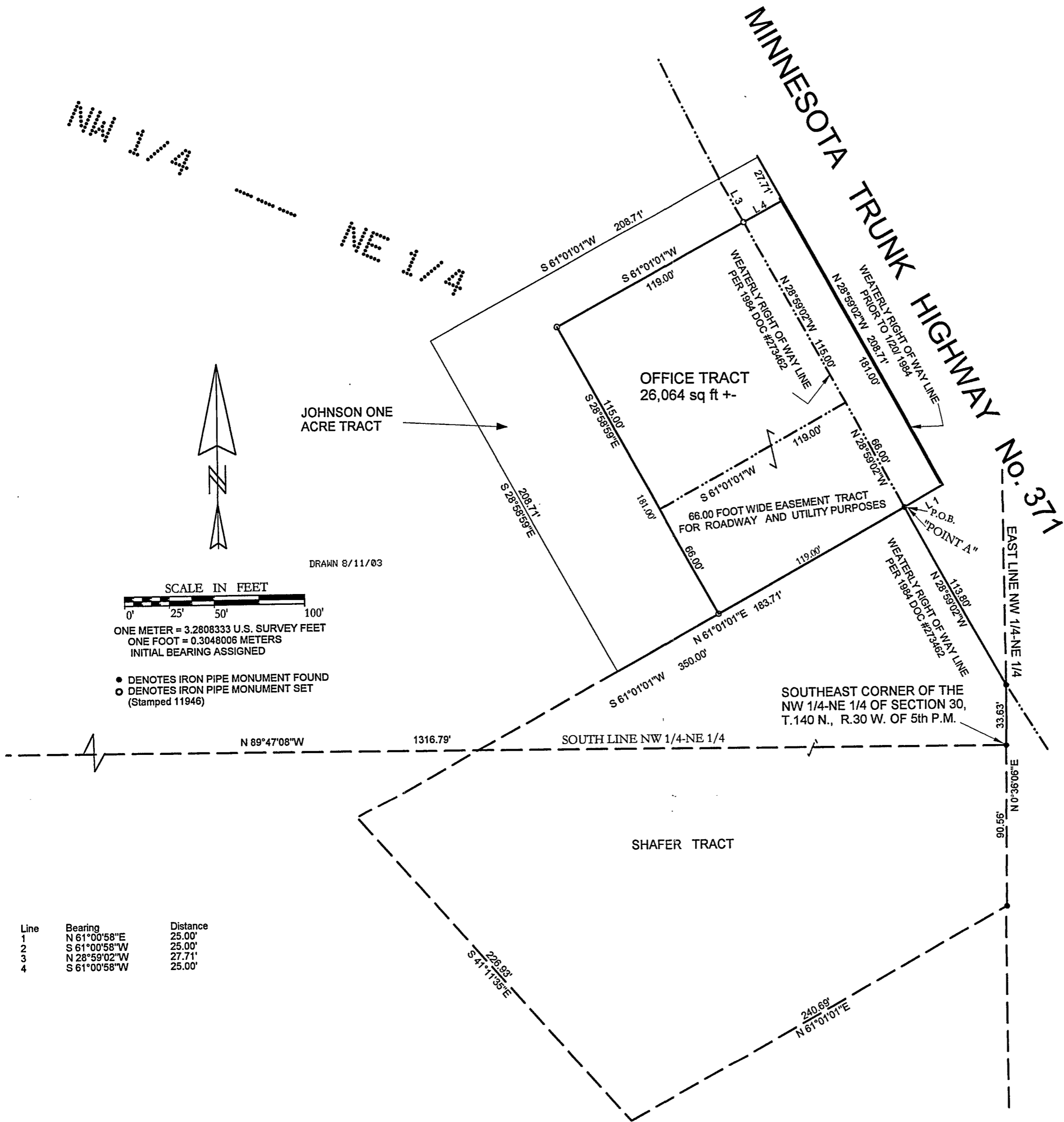


CERTIFICATE OF SURVEY

for
JOHNSON/LINDENBERG & ASSOCIATES, INC

PART OF THE NORTHWEST QUARTER OF THE NORTHEAST QUARTER (NW 1/4-NE 1/4)
OF SECTION 30, TOWNSHIP 140 NORTH, RANGE 30 WEST OF THE
5th PRINCIPAL MERIDIAN IN CASS COUNTY, MINNESOTA



Line	Bearing	Distance
1	N 61°00'58"E	25.00'
2	S 61°00'58"W	25.00'
3	N 28°59'02"W	27.71'
4	S 61°00'58"W	25.00'

NOTE: NO ATTEMPT WAS MADE TO SURVEY AND SHOW THE EXISTENCE AND LOCATION OF WELLS, IMPROVEMENTS, UTILITIES OR VISIBLE FEATURES, EASEMENTS, ABOVEGROUND OR SUBSURFACE, TOPOGRAPHY, TERRAIN, LOW LAND LIMITS, ETC., EXCEPT AS SHOWN HEREON.

AMI SURVEYORS & MAPPERS
1073 COUNTY 5 NW HACKENSACK, MINNESOTA 56452
PHONE: OFFICE 218/682-2411 * FAX 682-2988

I, ROGER A. MUSTONEN, HEREBY CERTIFY THAT THIS SURVEY WAS PREPARED BY ME OR UNDER MY DIRECT SUPERVISION AND THAT I AM A DULY LICENSED LAND SURVEYOR UNDER THE LAWS OF THE STATE OF MINNESOTA.

Roger A. Mustonen 8-28-2003
ROGER A. MUSTONEN, PLS
MINNESOTA LICENSE 11946

A 291

