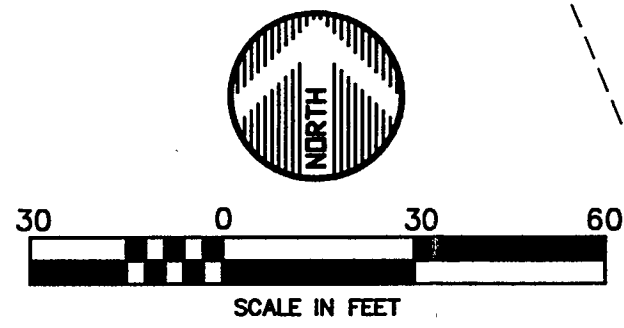
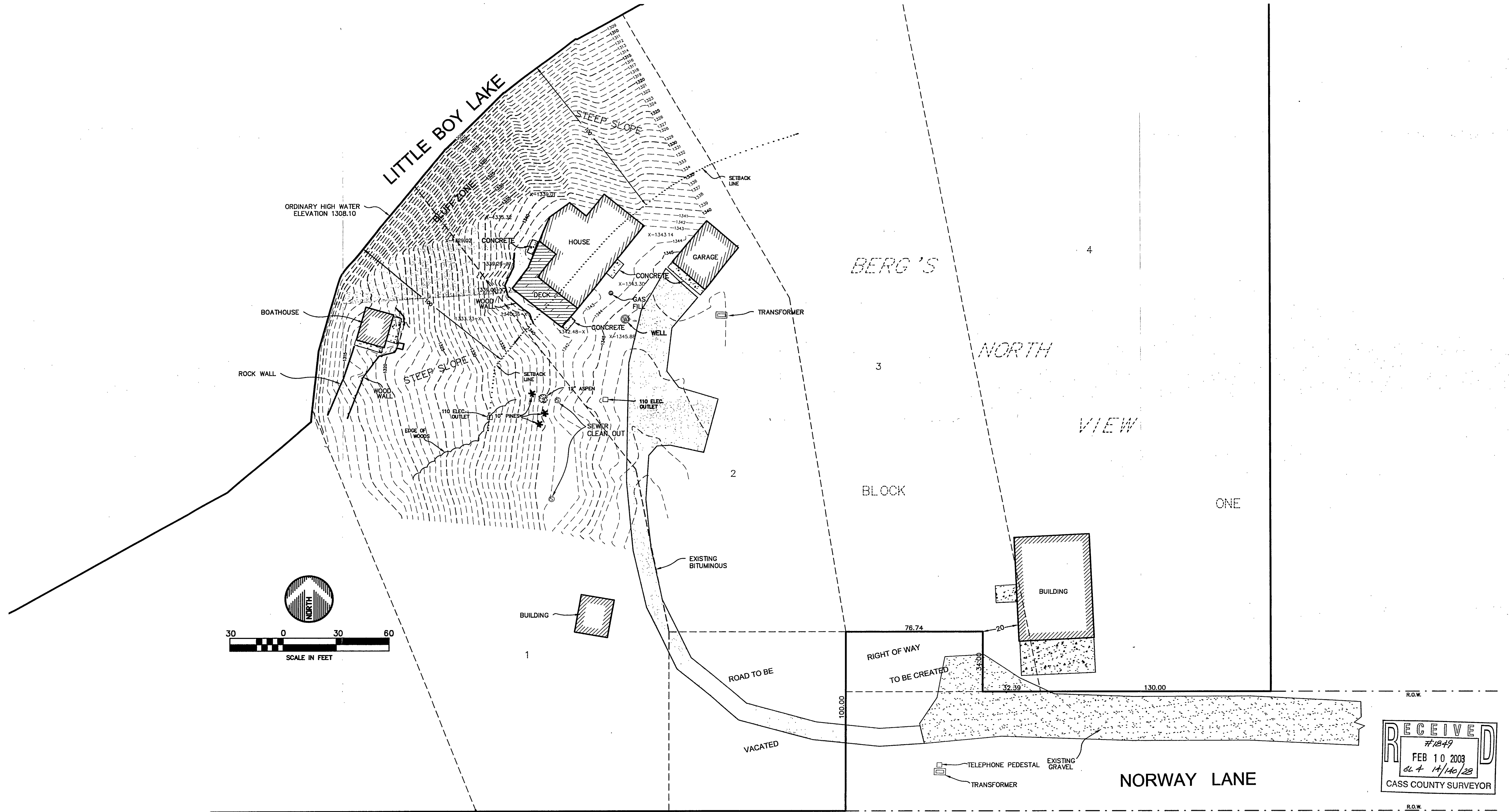


TOPOGRAPHIC SURVEY

LOTS 1-4, BLOCK ONE, BERG'S NORTH VIEW,
SECTION 14, TOWNSHIP 140, RANGE 28, CASS COUNTY, MINNESOTA



RECEIVED
#1849
FEB 10 2003
CL 4 14/140/28
CASS COUNTY SURVEYOR

DATE: 12/02/2002	DATE	AMENDMENTS	BY	PREPARED FOR: BRAD JOHNSON
SCALE: AS SHOWN				I HEREBY CERTIFY THAT THIS SURVEY, PLAN, OR REPORT WAS PREPARED BY ME OR UNDER MY DIRECT SUPERVISION AND THAT I AM A DULY LICENSED LAND SURVEYOR UNDER THE LAWS OF THE STATE OF MINNESOTA
DRAWN BY: J.J.G.				<i>Chad M. Conner</i> 12-05-02
CHECKED BY: J.W.M.				CHAD M. CONNER DATE: 12/02/2002 LIC. NO. 41643
FILE NUMBER: 6664				

WIDSETH SMITH NOLTING
ENGINEERS ARCHITECTS LAND SURVEYORS ENVIRONMENTAL SERVICES
ALEXANDRIA BEMIDJI BRAINERD CROOKSTON GRAND FORKS
WWW.WSN-MN.COM