

# CERTIFICATE of SURVEY

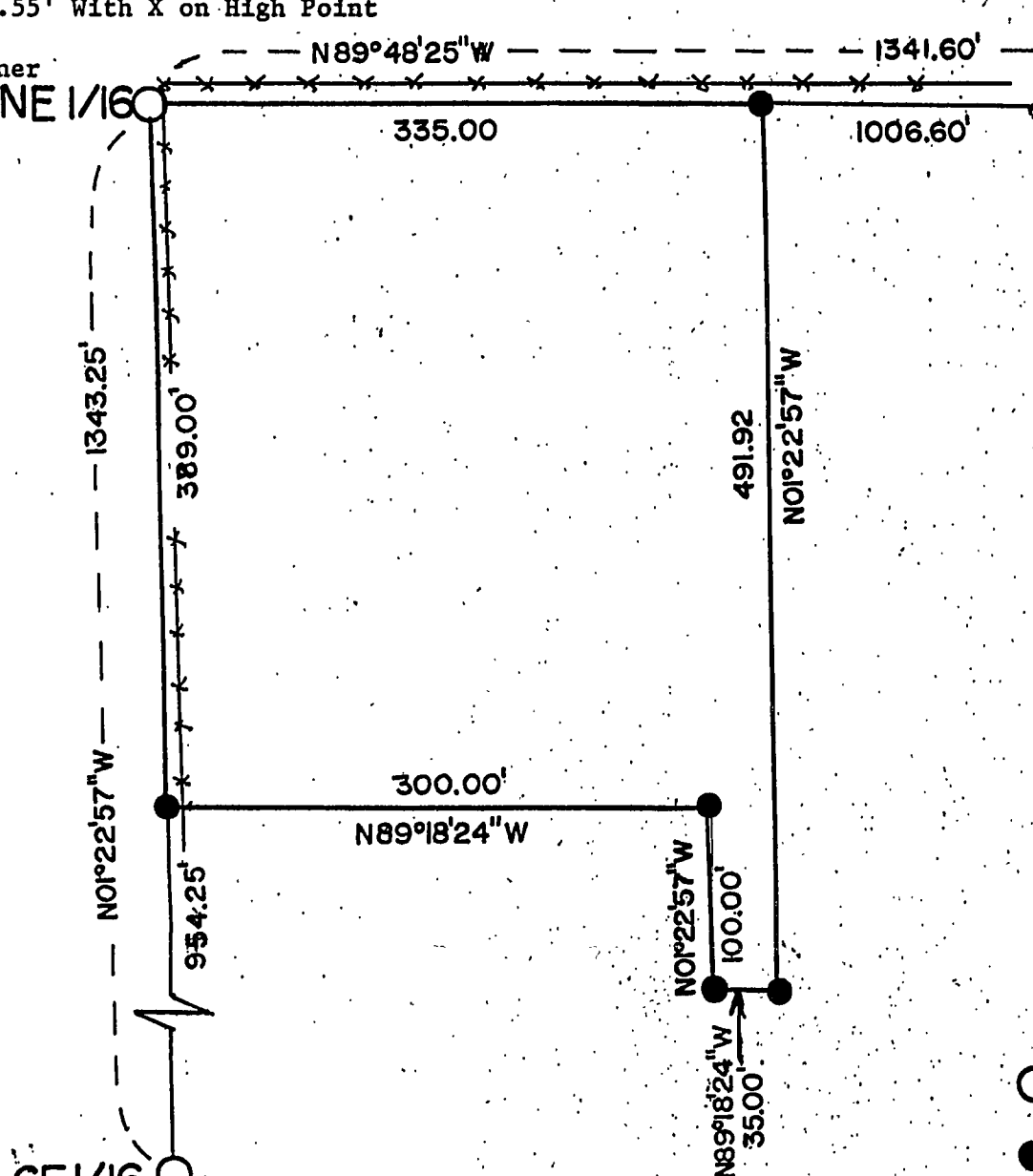
PART OF THE SE 1/4 SECTION 29, T141N, R26W,  
CASS COUNTY, MINNESOTA

TIES

Power Pole #443  
S40°W, 64.13'

Granite Boulder 3' x 2.5' x 12"  
S44°W, 16.55' With X on High Point

Fence Corner  
N45°E, 9.5'



T.141N. R.26W.  
S.2 S.1  
NE 1/16 NI/16

TIES

Power Pole, S38°11'41\"E  
87.23'

Power Pole, S60°17'09\"W,  
25.97'

MnDOT B.M., N0°59'04\"E,  
221.40'



## LEGEND

- - Set Section Subdivision Corners  
1 1/2" x 24" Gal. Iron Pipe
- - Set Parcel Corners 1/2" x 24"  
Re-bar/Plastic Cap
- x---x---x--- - Fence Line

SCALE: 1" = 100'

Bearing from MnDOT Survey between  
the N 1/4 and NE Section Corner.

TIES

6" Jack Pine, S20°W, 8.00'

X on Concrete Culvert Outlet,  
N30°E, 6.77'

Surveyors Affidavit:

I, Milo E. Stefan, RLS #12261, a Registered Land Surveyor  
in the State of Minnesota, have reviewed the deeds and  
have harmonously rectified ambiguous calls and surveyed  
and marked these parcels. This plat drawing is a true  
and correct representation of the lands surveyed and  
marked to the best of my abilities.

*Milo E. Stefan*  
Milo E. Stefan, RLS #12261

*5/23/02*  
Date

