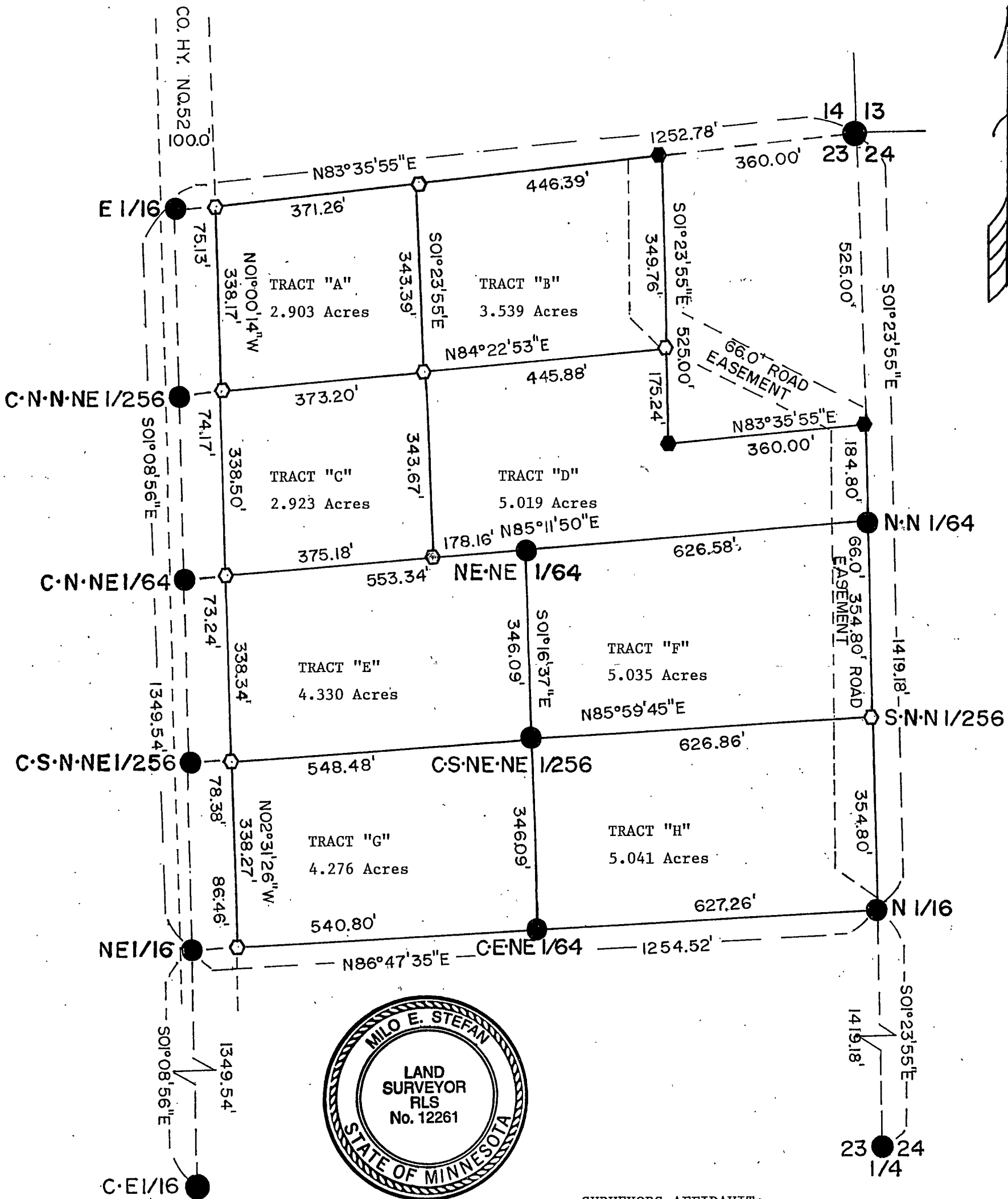


CERTIFICATE of SURVEY.

BEING THE NE1/4NE1/4 SECTION 23, TOWNSHIP 142 NORTH, RANGE 26 WEST, 5TH P.M.
CASS COUNTY, MINNESOTA



LEGEND

- - Found monuments from previous surveys/brass capped iron pipes
- ◆ - Found monuments from previous surveys/iron re-rod
- - 1" x 30" Aluminum monuments
- - Set property corners 1/2" x 24" re-rod/plastic cap

SCALE: 1" = 200'

Bearings based on U.S. Forest Service survey by Northern Lights Surveying and Mapping Inc. - RLS #16089



SURVEYORS AFFIDAVIT:

I, Milo E. Stefan, a registered land surveyor in the State of Minnesota, RLS #12261, and at the request of "Stefan Properties" have surveyed and marked the limits of Tracts "A" through "H", henceforth to be known as "Hardwood Acres", all in the NE1/4NE1/4, Section 23, Township 142 North, Range 26 West, Cass County, Minnesota. I certify that I have marked and placed monuments at the tract corners and this plat drawing is a true and correct representation of the lands surveyed.

Milo E. Stefan
Milo E. Stefan, RLS #12261

6/5/2001
Date