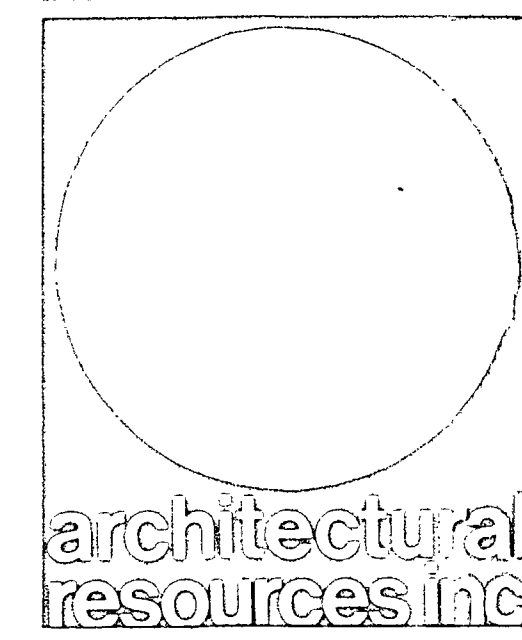


WALKER DEVELOPMENT PARK

WALKER, MN.



Preliminary Design

Architecture  
Planning  
Engineering  
Landscape  
Architecture

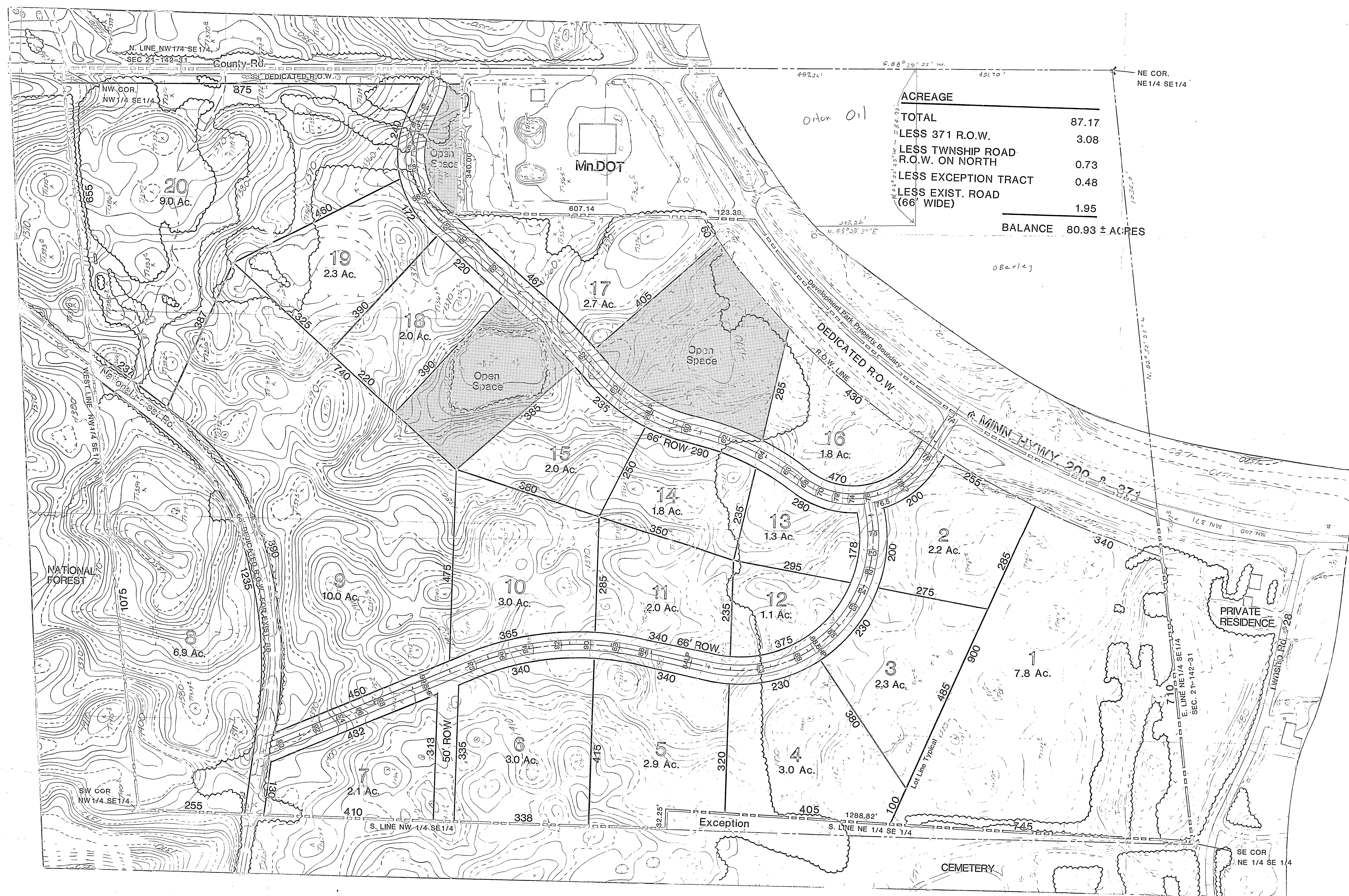
704 East Howard Street  
Hibbing, Minnesota 557  
(218) 263-6868

126 East Superior Street  
Duluth, Minnesota 5580  
(218) 727-8451

Consultants

Revisions

project no 80-053  
date 11DEC80  
drawn KB  
I hereby certify that this  
specification, or report was  
prepared by me, or under my  
supervision, and that I am a  
registered professional  
engineer of the State of

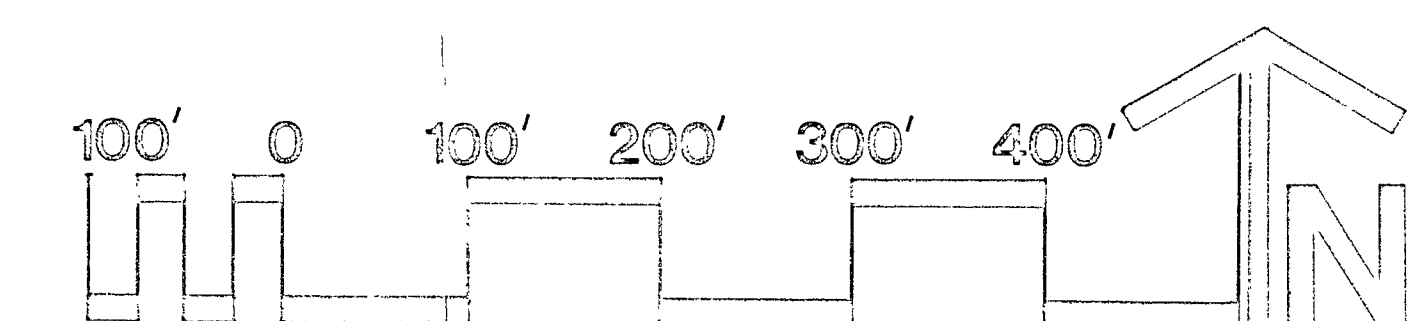


ACREAGE	
TOTAL	87.17
LESS 371 R.O.W.	3.08
LESS TOWNSHIP ROAD R.O.W. ON NORTH	0.73
LESS EXCEPTION TRACT	0.48
LESS EXIST. ROAD (66' WIDE)	1.95
<b>BALANCE</b>	<b>80.93 ± ACRES</b>

# PRELIMINARY PLAT OF WALKER DEVELOPMENT PARK

PART OF SE 1/4, SEC. 21, T.142N., R.31W.  
CASS COUNTY, MINNESOTA

WALKER INDUSTRIES INC., WALKER, MINN - CONTRACTING OWNER & DEVELOPER  
DEC. 1980



SURVEY DATA FROM BOUNDARY SURVEY OF 6/24/80  
PREPARED BY GARY STEVENSON & ASSOCIATES INC.  
WALKER, MINNESOTA  
REG. NO. - 12684

