

JUN 21 1983

RECEIVED  
#1344  
COUNTY SURVEYOR

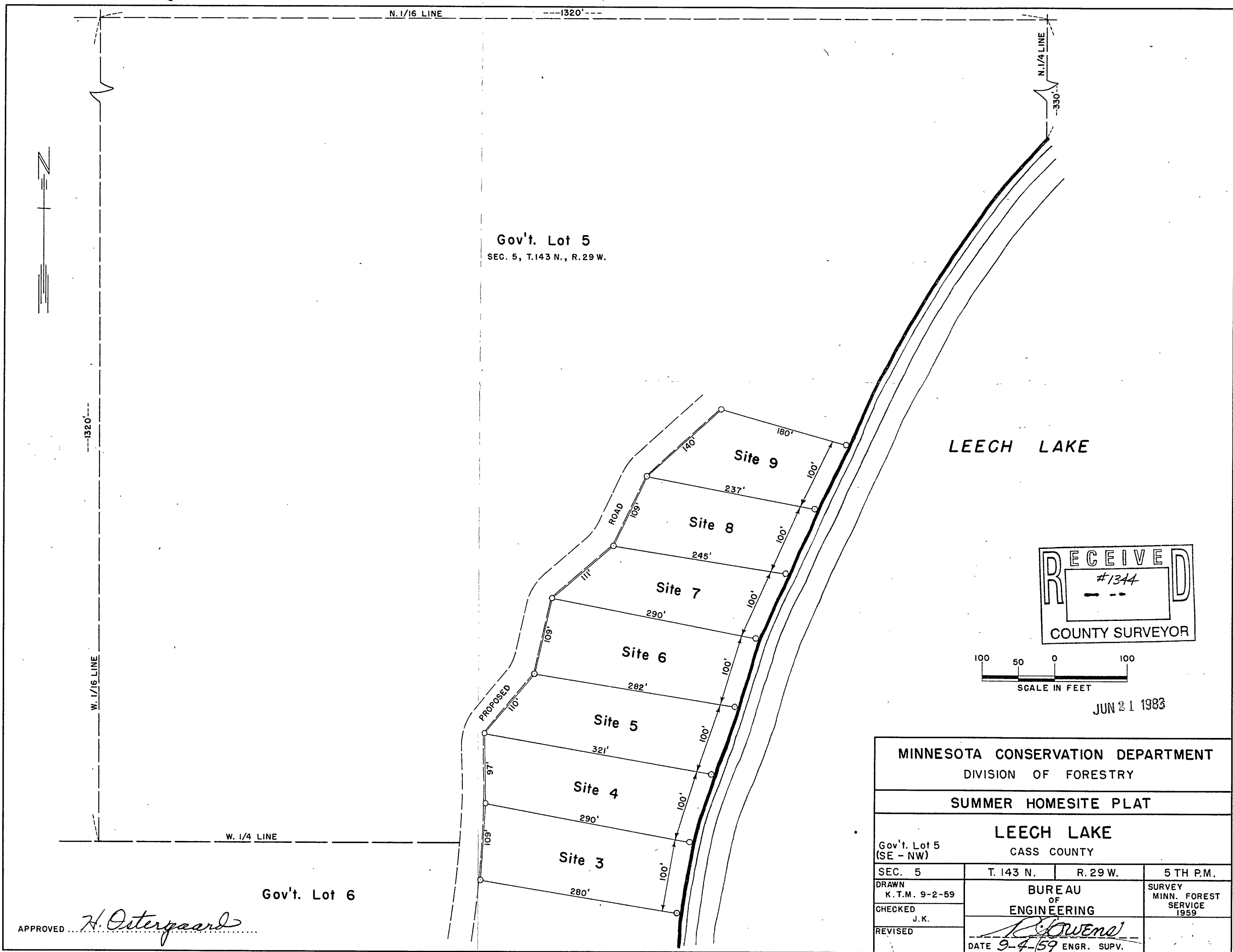
APPROVED *H. Ostergaard*

MINNESOTA CONSERVATION DEPARTMENT			
DIVISION OF FORESTRY			
SUMMER HOMESITE PLAT			
LEECH LAKE			
CASS COUNTY			
Gov't. Lot 6 (NW - SW)	SEC. 5	T. 143 N.	R. 29 W.
			5 TH P.M.
DRAWN K. T. M. 9-2-59	BUREAU OF ENGINEERING		SURVEY MINN. FOREST SERVICE 1959
CHECKED J. K.	<i>R. Owens</i>		
REVISED	DATE 9-7-59	ENGR. SUPV.	

SHEET 1 OF 2

FHS 178

15 X 18



Gov't. Lot 5  
SEC. 5, T.143 N., R. 29 W.


Gov't. Lot 6

LEECH LAKE

RECEIVED  
#1344  
COUNTY SURVEYOR

100 50 0 100  
SCALE IN FEET

JUN 21 1983

MINNESOTA CONSERVATION DEPARTMENT			
DIVISION OF FORESTRY			
SUMMER HOMESITE PLAT			
LEECH LAKE			
CASS COUNTY			
Gov't. Lot 5 (SE - NW)	SEC. 5	T. 143 N.	R. 29 W.
			5 TH P.M.
DRAWN K. T.M. 9-2-59	BUREAU OF ENGINEERING		SURVEY MINN. FOREST SERVICE 1959
CHECKED J.K.	 ENGR. SUPV.		
REVISED	DATE 9-4-59		

APPROVED *H. Ostergaard*

15 X 18

SHEET  
2 of 2

FHS 178