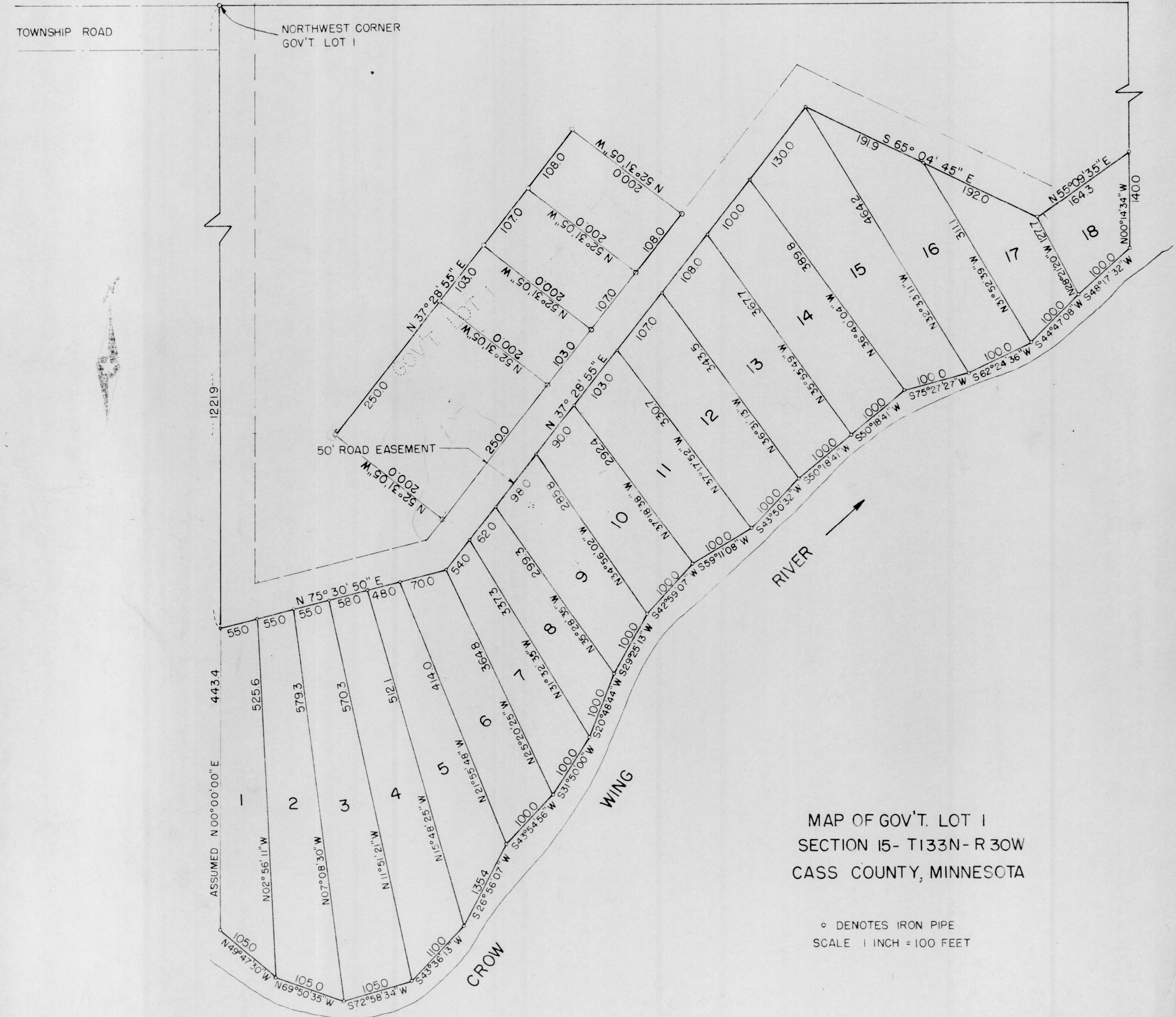


SW 1/4 - NW 1/4 - SEC. 15-133-30



SW 1/4 - NW 1/4 - SEC. 15-153-30

TOWNSHIP ROAD

NORTHWEST CORNER
GOV'T. LOT 1

366
50
416
816
403.9



+ 5 ACRES

+ 15 ACRES

GOV'T LOT 1

50' ROAD EASEMENT

RIVER

WING

CROW

* Add on
North to Road

To include
ALL from East Line Gov't
Lot #1 To South of Road
of Police's west of the lot
Ties back to centerline
of lot #17 plus 70
feet

304
1034
407

MAP OF GOV'T. LOT 1
SECTION 15- T133N-R 30W
CASS COUNTY, MINNESOTA

o DENOTES IRON PIPE
SCALE 1 INCH = 100 FEET

