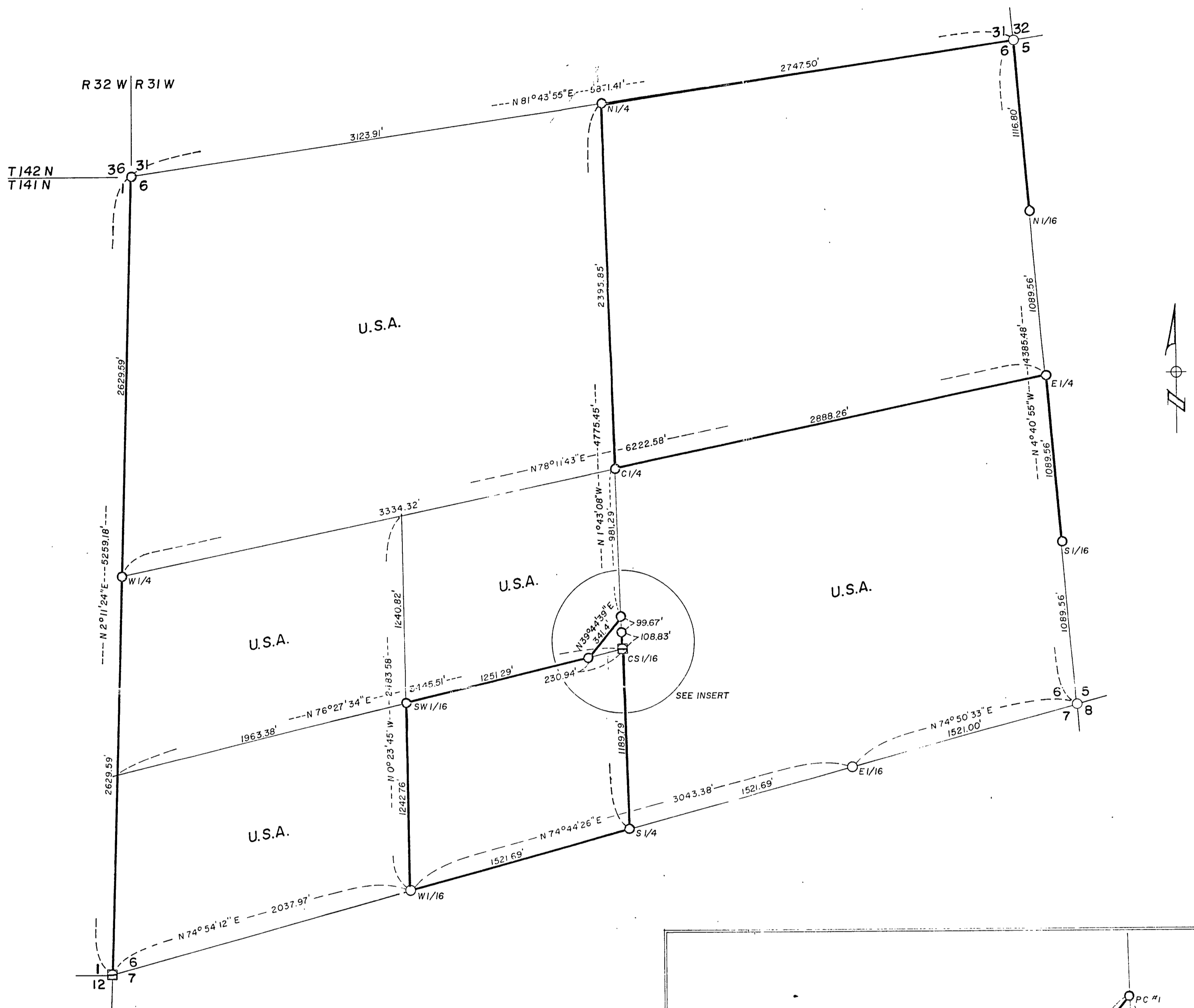
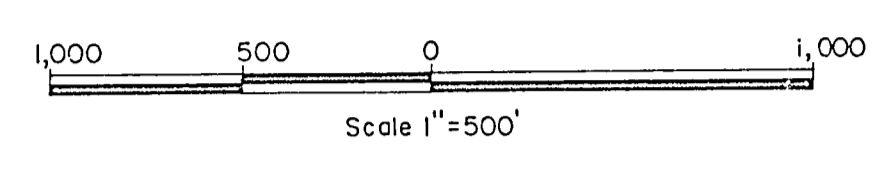


6/14/31

PLAT OF SURVEY U.S. GOVERNMENT LAND

Being the NE 1/4 SW 1/4, W 1/2 SW 1/4, SE 1/4, and the NW 1/4 of Section 6.
Township 141 North Range 31 West 5th Principal Meridian
County of Cass State of Minnesota



LEGEND

- Corner position marked by a 2 inch diameter by 5 foot long galvanized iron pipe filled with concrete and capped with a 3 inch diameter brass cap stamped to identify corner.
 - ⊠ Corner position marked by a 6 inch by 6 inch by 2 foot long concrete post capped with a 3 inch diameter brass cap stamped to identify corner.
 - Corner position marked by a 2 inch by 4 foot long iron pipe with a brass cap stamped to identify corner. (Cass County Monument)
- Conversion Factors: Feet to Meters - 0.304801, Meters to Feet - 3.280833
- Boundary line marked to Forest Service Standard
- P.C. Property corner
- U.S.A. U.S. Government land

