

to Bobi KOVANEN Cass County Surveyor

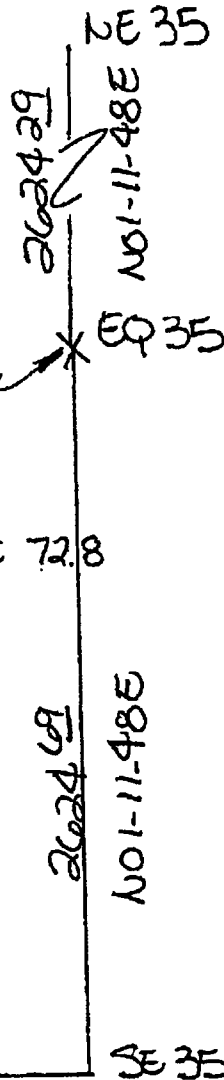
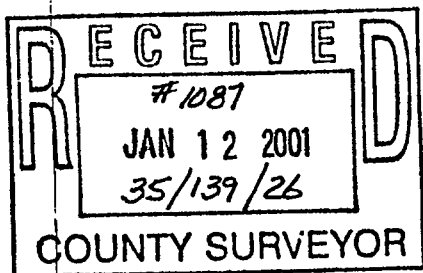
1/12/01 FAX # 218-547-1099

Here is Coulters info:

Sec 35 Cutter set
1 1/4" x 5' PIPE
ties

139-26

- 1) 12" NORWAY N34-15E 72.8
- 2) 12" NORWAY S77-30E 61.5
- 3) 10" OAK S26-30W 51.4
- 4) 12" OAK S74-45W 48.0
- 5) 4" NORWAY N16W 40.4



COULTER
mc

1420.68
N85-36-55E

1/4 cor 2649.13
N88-15-14W

Don Dugely