

002075

LEECH LAKE RIDERS
SNOWMOBILE CLUB

T @ 85, 85 77 (201.79)

86 X 178-55-29 m) 178-55-28 Δ
X 178-55-27

HD 170.45

T @ 86, 85 85

87 X 180-20-08 m) 180-20-08 Δ
X 180-20-08

HD 207.82

T @ 87, 85 86

88 X 178-09-41 m) 178-09-43 FD CLO
X 178-09-44 BRASS CAP

HD 73.32

89 X 179-21-01 m) 179-21-02 Δ
X 179-21-03

HD 183.34

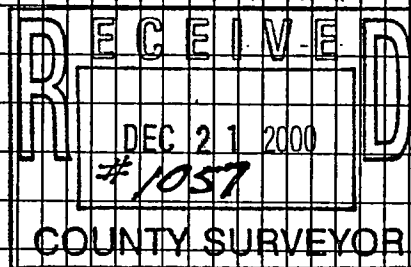
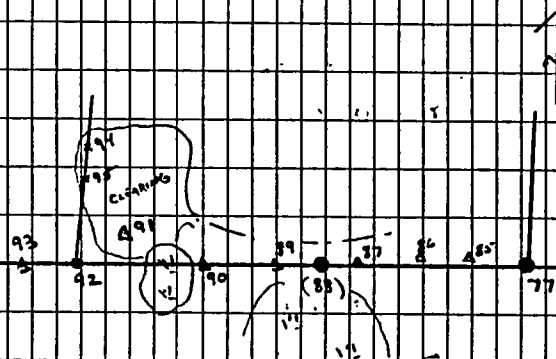
T @ 89, 85 87

90 X 180-26-20 m) 180-26-18 Δ
X 180-26-16

HD 231.84

TODD J
TONY J.

6-7.00
60° OVERCAST



12/14/31

002075

LLR3C

T @ 90.85 89

A1 X 183-07-28 M) 183-07-28 Δ

X 183-07-27

HD 247.81

T @ 91.85 90

93 X 169-07-26 M) 169-07-24 Δ

X 169-07-22

HD 136.59

92 X 161-23-00 HD 67.36 SET 3" REBAR

T @ 93.85 91

96 X 187-23-32 M) 187-23-31 Δ

X 187-23-30

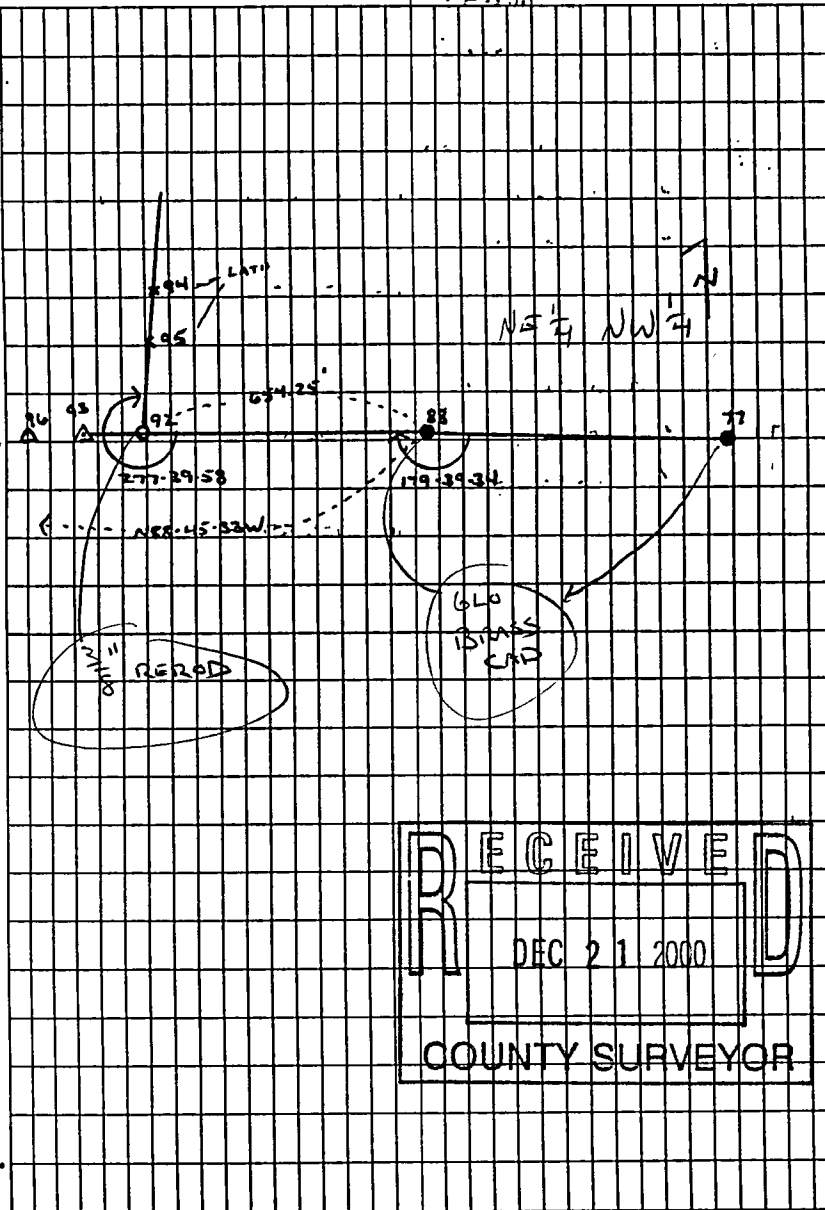
HD 114.85

T @ 96.85 93

SET 3" LATH ON LINE WLY - LAST LATH

361' FROM 896

FLAGGED TO R/L GRADE



RECEIVED
 DEC 21 2000
 COUNTY SURVEYOR