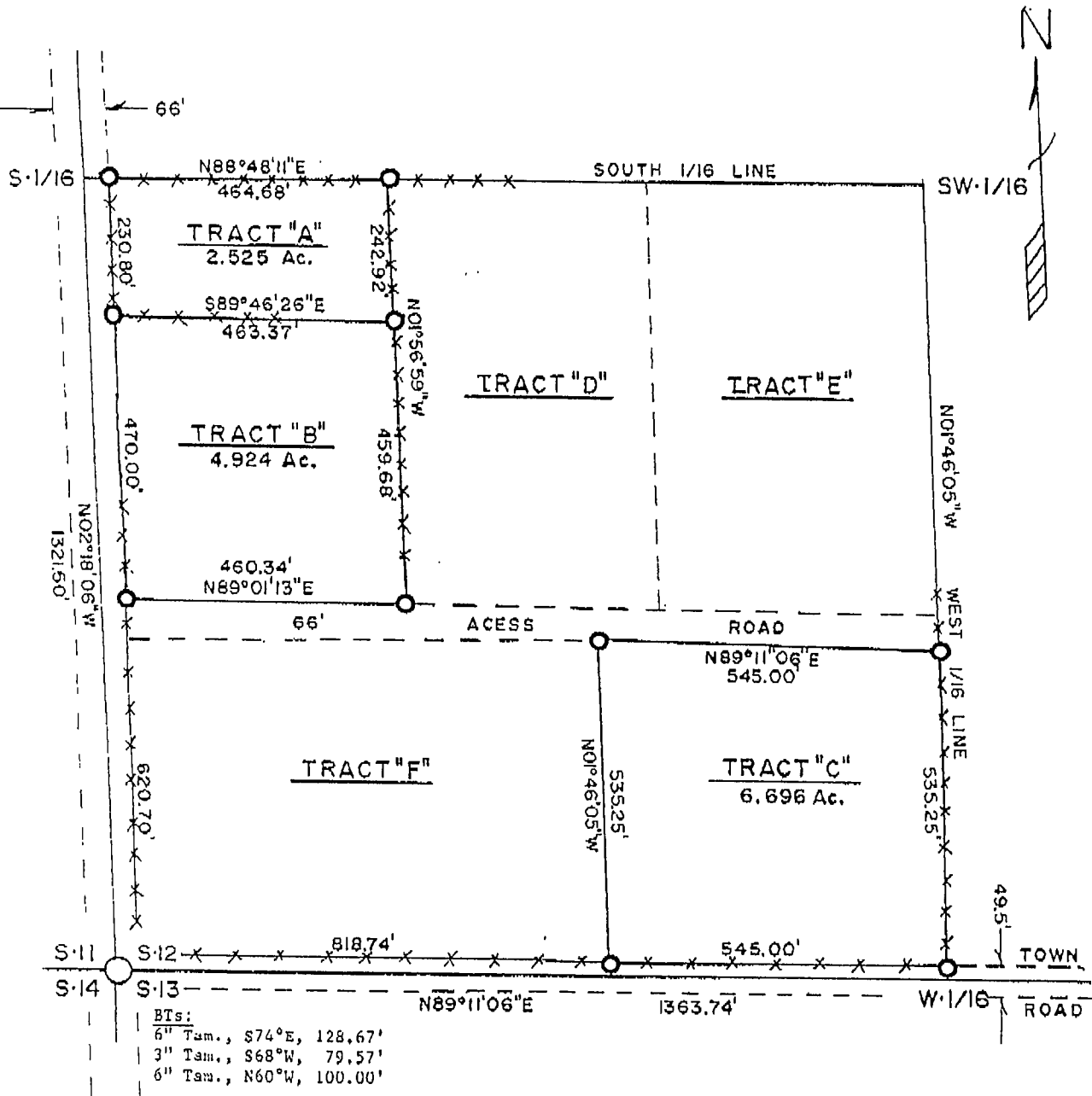


# CERTIFICATE of SURVEY FOR DEAN ENGEN

BEING THE SW $\frac{1}{4}$ SW $\frac{1}{4}$  OF SECTION 12, TOWNSHIP 141 NORTH, RANGE 26 EAST  
CASS COUNTY, MINNESOTA



### LEGEND

### SURVEYORS AFFIDAVIT:

I, Milo E. Stefan, RLS #12261, a Registered Land Surveyor in the State of Minnesota, and at the request of Dean Engen have surveyed and marked the tract corners. I certify that this plat drawing is a true and correct representation of the lands surveyed and marked to the best of my abilities.

*Milo E. Stefan*  
Milo E. Stefan  
RLS #12261

7/30/2000  
Date

