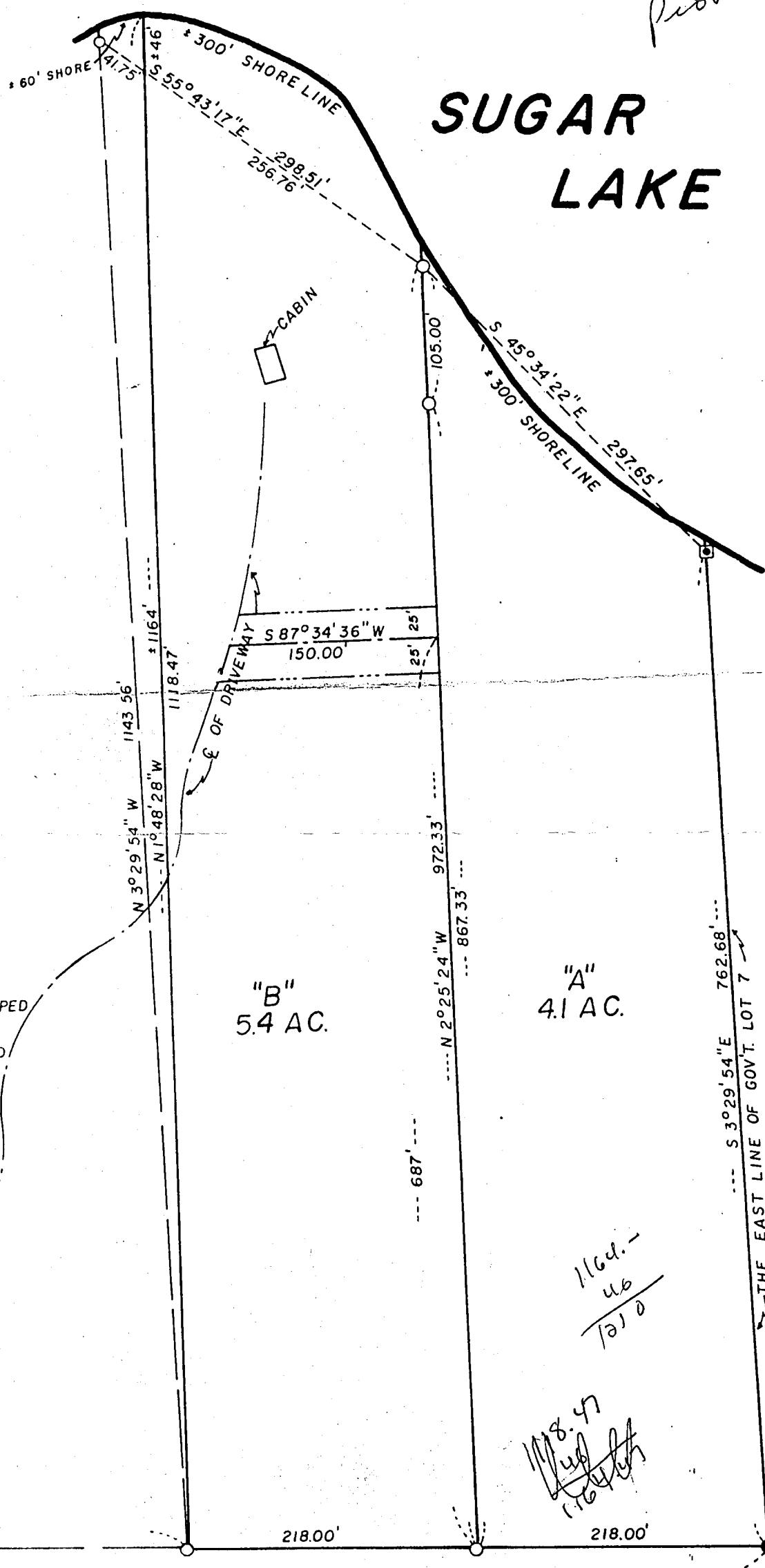


DEED FOR DENNIS ECKHOLM SECTION 33, T143N, R25W COUNTY, MINNESOTA

RECEIVED
#596
BL 7 33/143/25
COUNTY SURVEYOR

Provided by Munn



John M. Klenotich
Registered Land Surveyor
3240 Airport Road
Grand Rapids, MN 55744
326-8047

SCALE 1"=100'
BEARINGS ARE BASED ON ASSUMED DATUM
1/2" IRON PIPE SET WITH PLASTIC CAP STAMPED R.L.S 13310
1/2" IRON PIPE FOUND IN PLACE R.L.S 12684
U.S.F.S CONCRETE MONUMENT
B.L.M MONUMENT

"B"
5.4 AC.

"A"
4.1 AC.

1164.47
46
1010

1164.47