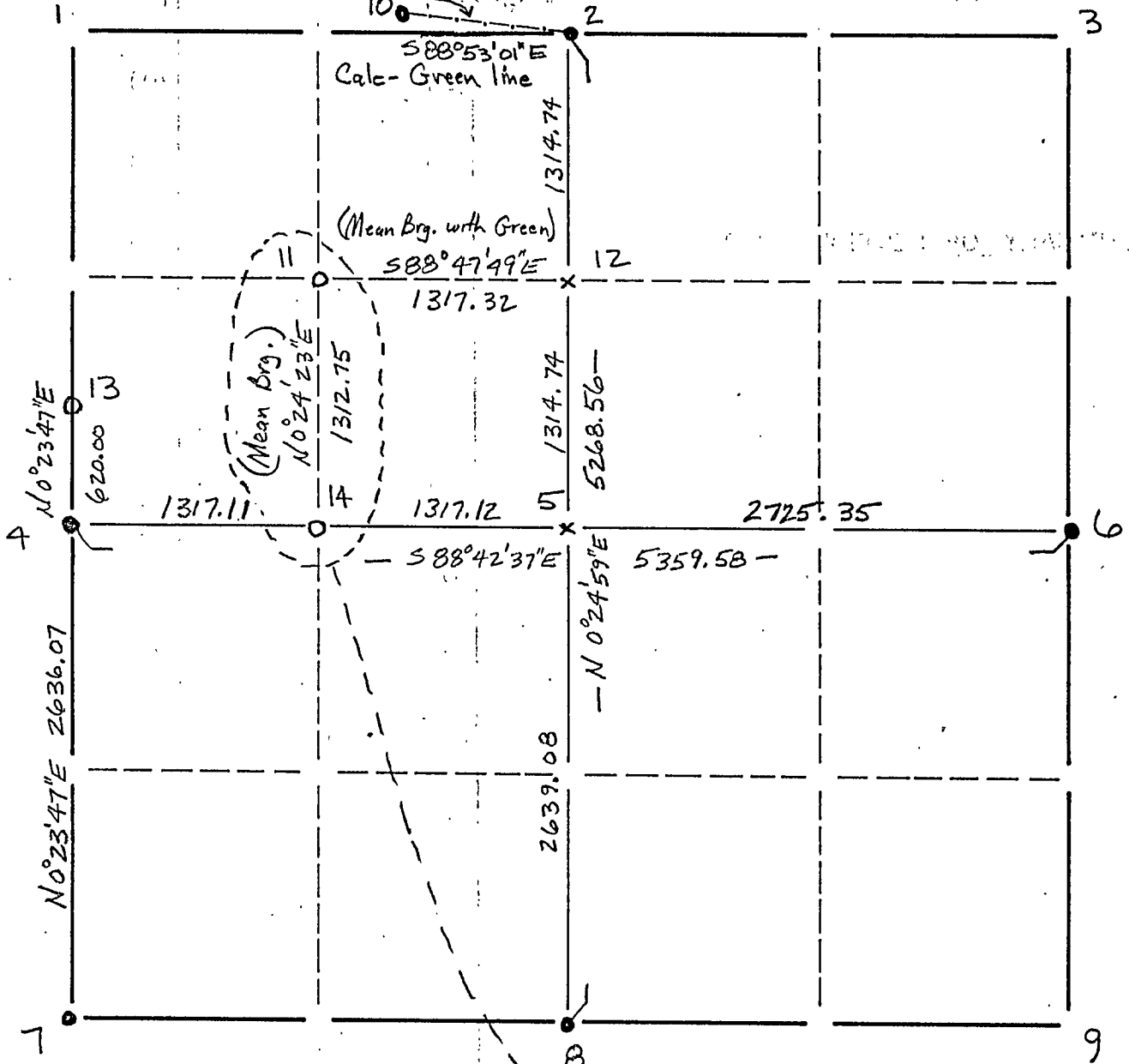


North line - Plat of "Bromson's 4-Point Lodge"

(10-2) $S82^{\circ}12'14''E$
538.96

SEC. 11 T. 139 N, R. 30 W



TYPE OF MONUMENTATION

- 1) Cast Iron Monument
- 2) Cast Iron Monument
- 3) Cast Iron Monument
- 4) 2" Iron (set by Green 1925)
- 5) Calc (BB 4-6+8-2)
- 6) 1 1/2" Iron
- 7) 2 1/2" Iron
- 8) 2" Iron
- 9) Cast Iron Monument
- 10) 1 1/2" Iron
- 11) Calc
- 12) Calc (split 5-2)
- 13) Calc
- 14) Calc (split 4-5)
- 15) Cast Iron Monument
- 16) Cast Iron Monument
- 17) Cast Iron Monument
- 18) Cast Iron Monument

