

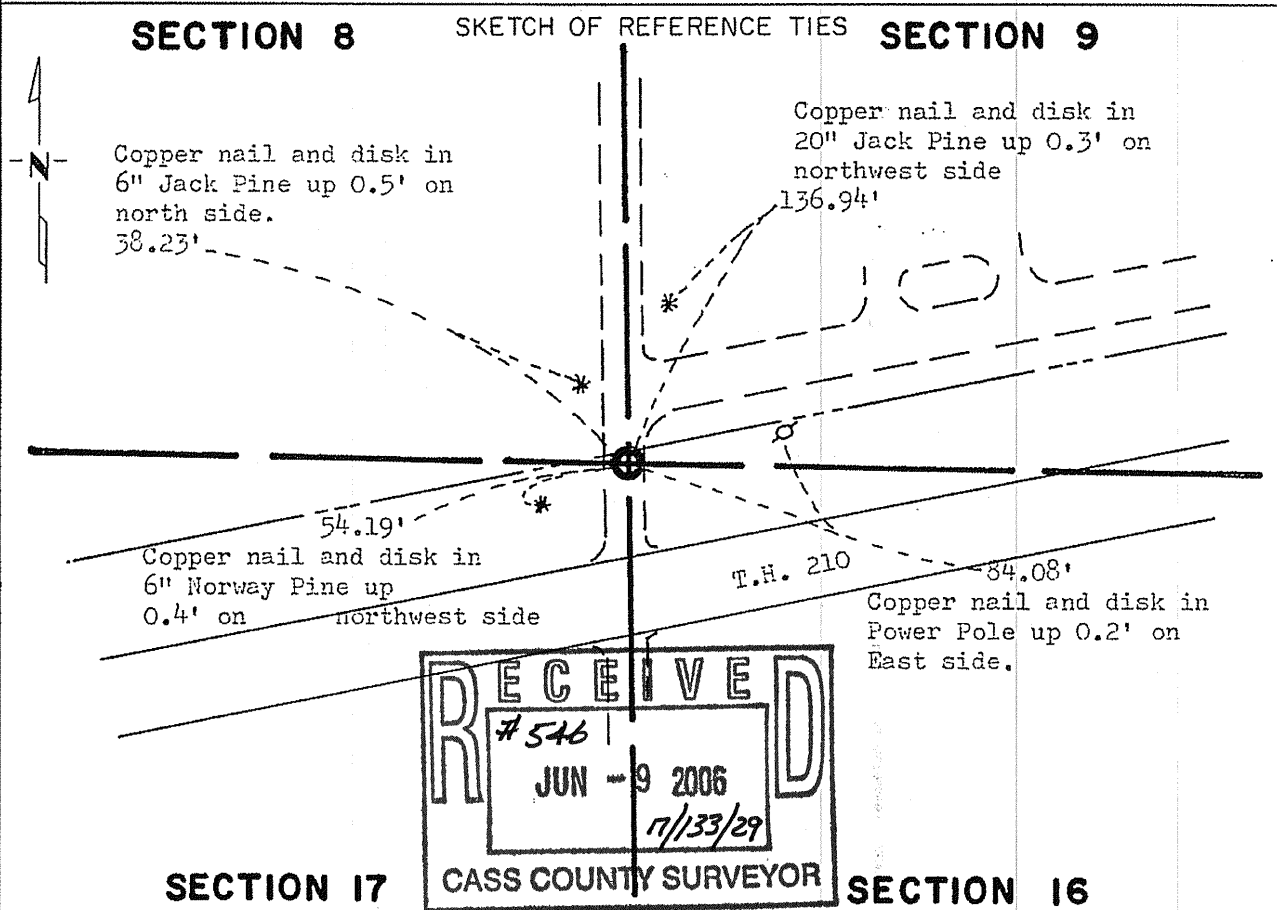
CERTIFICATE OF LOCATION OF GOVERNMENT CORNER

Northeast Corner of Section 17, Township 133N, Range 29W, 5th P.M.

STATE OF MINNESOTA, County of ~~Crow Wing~~ CASS

At the corner location shown on the sketch:

- On 6/23/77 found a axle shaft in poured concrete
DATE
- * Township blade striking monument causing road hazard- unable to lower
 left monument as found, lowered monument, removed monument (explain) *
- On 6/23/77 placed a 1-1/2" Capped iron pipe down 6"
DATE



Statement of evidence relative to this corner location is on back of page.

I hereby certify that this document and the data contained herein was prepared by me or under my direct supervision.

Alphonse P. Welle 6/29/77
SIGNATURE DATE

Registration No. 11873

Land Surveyor, Professional Engineer
 County Surveyor, County Engineer

OFFICE OF THE COUNTY RECORDER
County of _____

I hereby certify that this document was filed in the Co. Recorders office at _____ .M. on the _____ day of _____ A.D., 19 _____

County Recorder _____
By _____, Deputy
DOCUMENT NO. _____