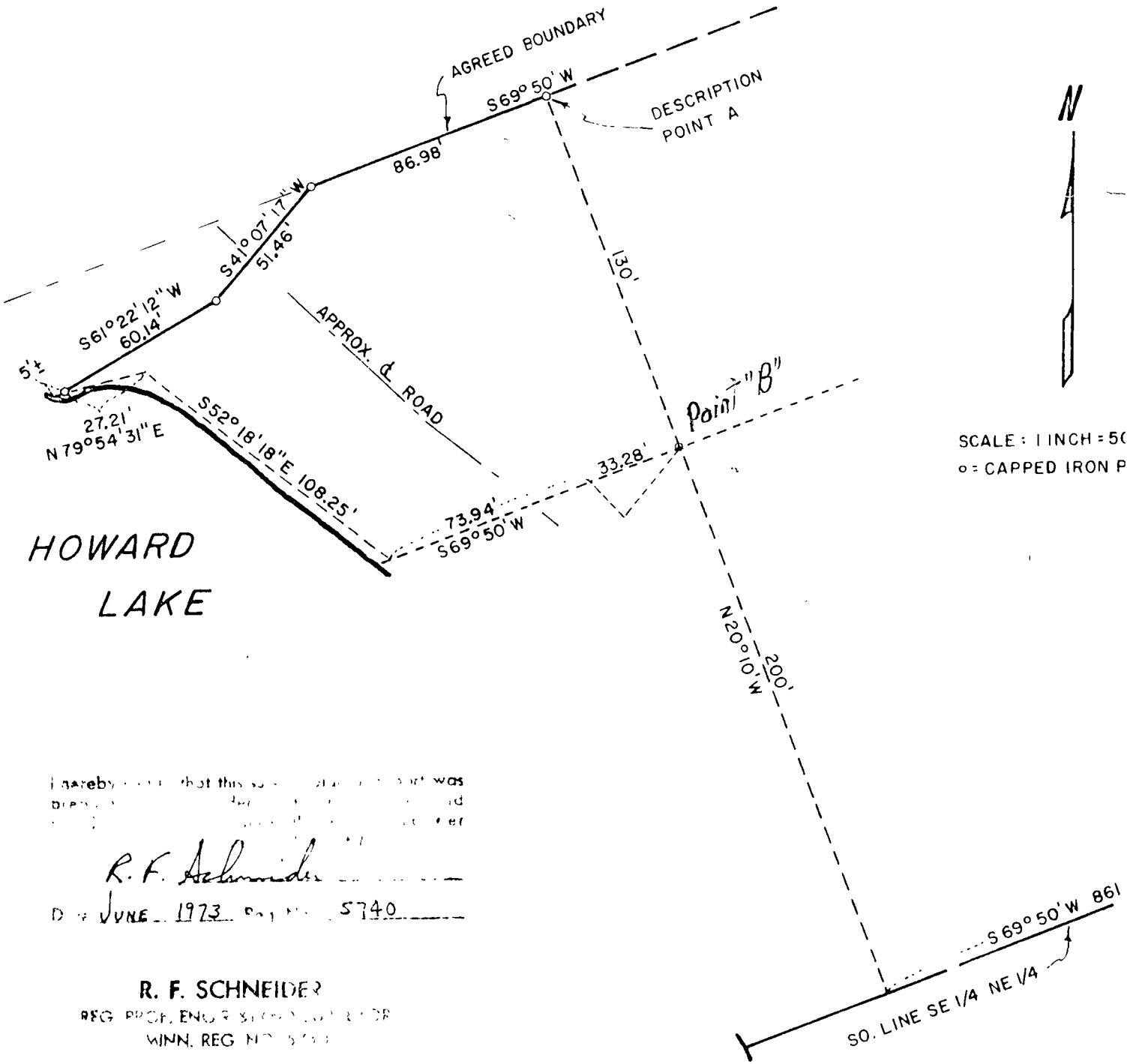


PLAT OF SURVEY

PART OF SE 1/4 NE 1/4, SEC. 30, T. 141 N., R. 31 W.

30-141-31



I hereby certify that this survey was made in accordance with the laws of the State of Minnesota and that the same is a true and correct copy of the original as filed in the office of the Register of Deeds for the County of Hennepin, Minnesota.

R. F. Schneider

D. of JUNE 1973 P.M. 5740

R. F. SCHNEIDER
REG. PROF. ENGR. SURVEYOR & L.S.D.
MINN. REG. NO. 5740