

# CERTIFICATE OF SURVEY

GOV'T. LOT 12, SEC. 11, T.14N., R.31W., & GOV'T. LOT 1, SEC. 14, T.14N., R.31W.,  
CASS COUNTY, MINNESOTA

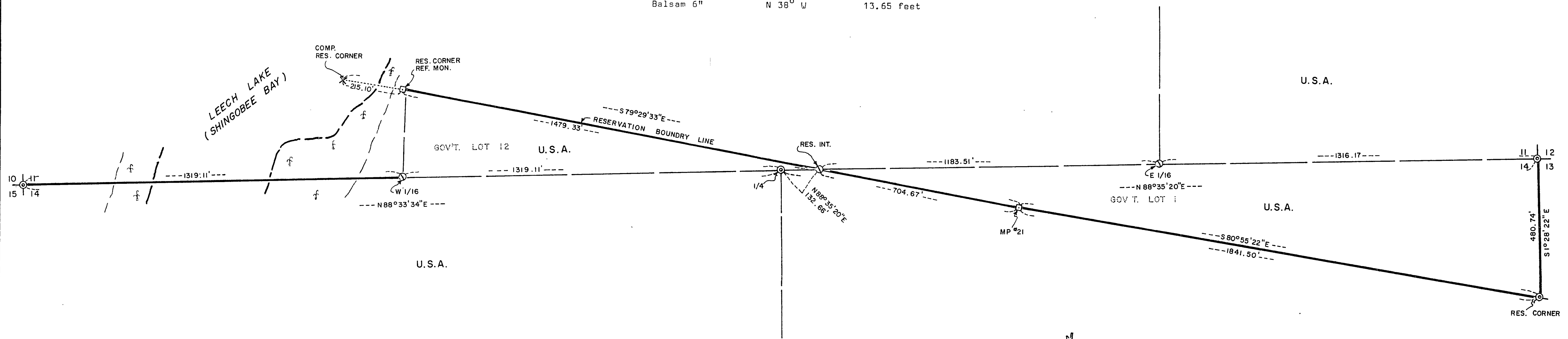
### CORNERS ESTABLISHED

1. East Sixteenth Corner to Sections 11 & 14  
Corner position established at the midpoint and on line between the section corner east and quarter corner west.  

Corner References:	Aspen 10"	N 39° E	35.77 feet
	Jack Pine 15"	S 73° E	27.47 feet
	Norway Pine 12"	S 19° W	27.21 feet
  
2. Northwest Corner of Government Lot 1, Section 14  
Corner position established at the intersection of the Leech Lake Indian Reservation line and the section line between Sections 11 & 14.  

Corner References:	White Oak 6"	N 88° W	76.45 feet
	Balsam 6"	S 85° E	38.47 feet
	Aspen 12"	S 20° W	15.25 feet
  
3. West Sixteenth Corner to Sections 11 & 14  
Corner position established at the midpoint and on line between the section corner west and quarter corner east.  

Corner References:	Birch 14"	N 52° E	14.95 feet
	Balsam 8"	S 78° E	16.25 feet
	Balsam 6"	N 38° W	13.65 feet



Approved for Filing this 28 day of Oct, 1985.

Dean L. Hickey  
Dean L. Hickey, District Ranger, Walker, Minnesota.

I hereby certify that this document was filed in the office of the County Recorder for record this 28 day of Oct, 1985, at 2:20 o'clock P.M. and assigned Document Number 285368.  
Clarence Kayser, County Recorder, Cass County, Minnesota.

**SURVEYOR'S CERTIFICATION**

I hereby certify that this survey was prepared by me or under my direct supervision and that I am a duly Registered Land Surveyor under the laws of the State of Minnesota.

Gary H. Stevenson Date: Oct. 28, 1985  
Gary H. Stevenson, Reg. No. 12684

SCALE: 1 INCH = 200 FEET

- ⊙ = USGLO BRASS CAP MONUMENT INPLACE
- = COUNTY ALUM. CAP MONUMENT SET
- ⊙ = 2" X 5" IRON MON. WITH 3" BRASS CAP STAMPED TO IDENTIFY CORNER SET
- U.S.A. = U.S. GOVERNMENT LAND
- (f) = DENOTES WETLAND
- ORIENTATION OF THIS BEARING SYSTEM IS ASSUMED