

D.L. 1 162100 Shingobee

142-31

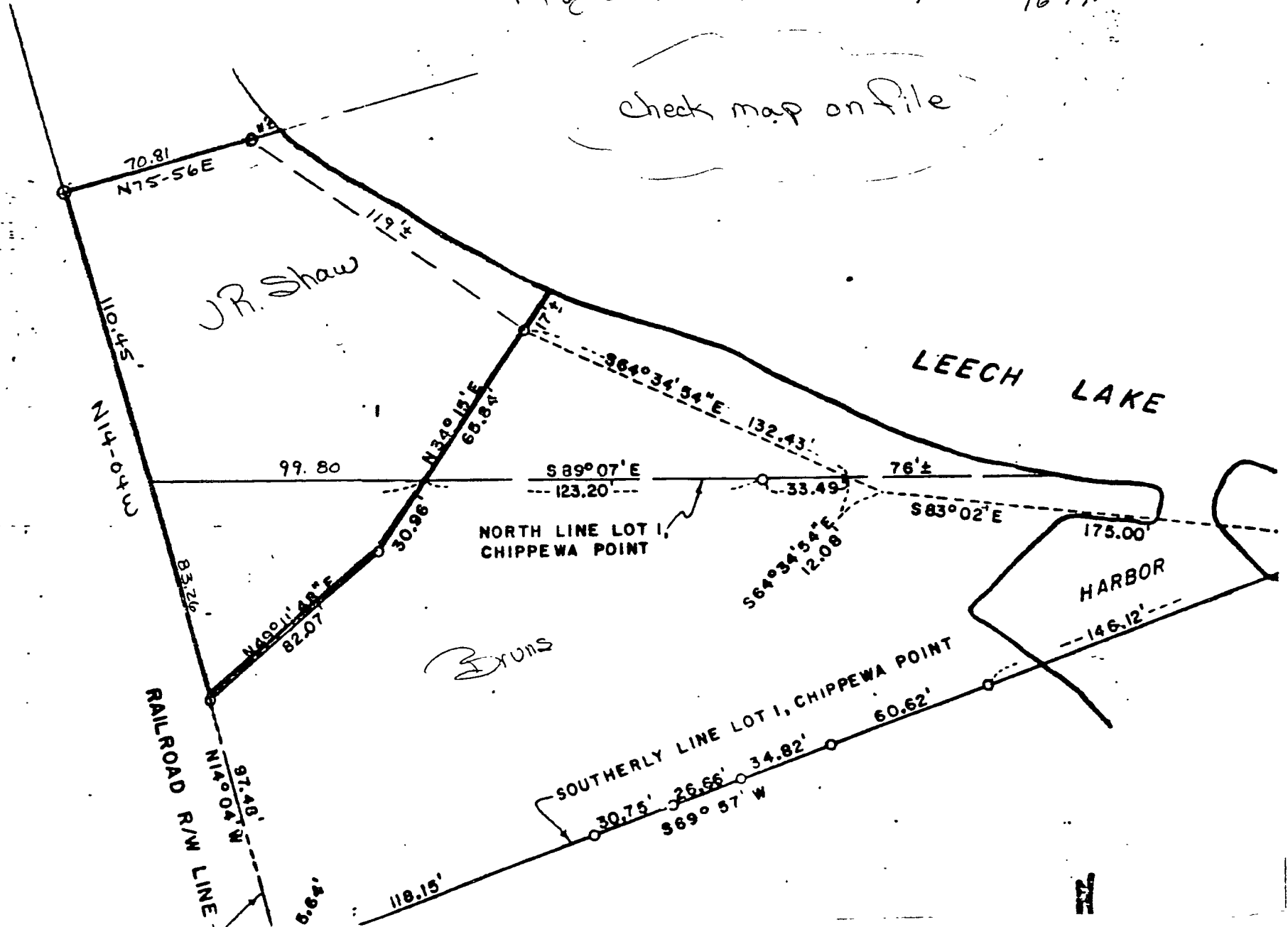
Part of Lot 1 Chipewa Pt.

Part of G.L. 16-142-31

16-142-31

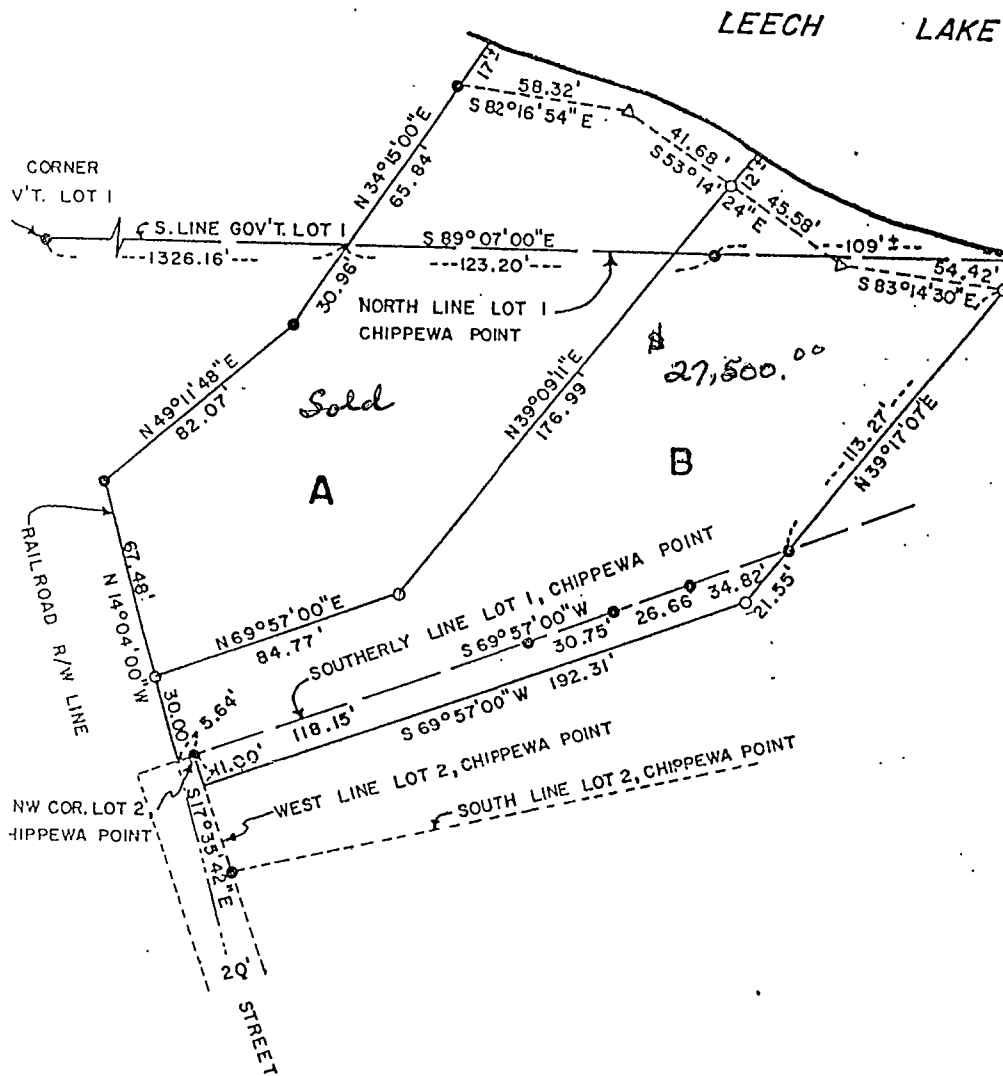
16-142-31

check map on file



PART OF GOV'T. LOT 1, SEC. 16, T. 142 N., R. 31 W.
 CASS COUNTY, MINNESOTA

16-142-31



Adjacent to Walker Bay
 Resort, to the North.
 Some trees, mostly cleared.
 Excellent view, excellent
 lake frontage.



SCALE: 1 INCH = 50 FEET

○ = IRON PIPE MONUMENT SET

● = IRON PIPE MONUMENT IN PLACE

△ = SPIKE SET

ORIENTATION OF THIS BEARING SYSTEM
 IS ASSUMED

NOTE: SEE SEPARATE SHEETS FOR
 DESCRIPTIONS

16-142-31

PLAT OF SURVEY

PART OF LOT 1, CHIPPEWA POINT
PART OF GOV'T. LOT 1, SEC. 16, T. 142 N., R. 31 W.
CASS COUNTY, MINNESOTA

77-147

