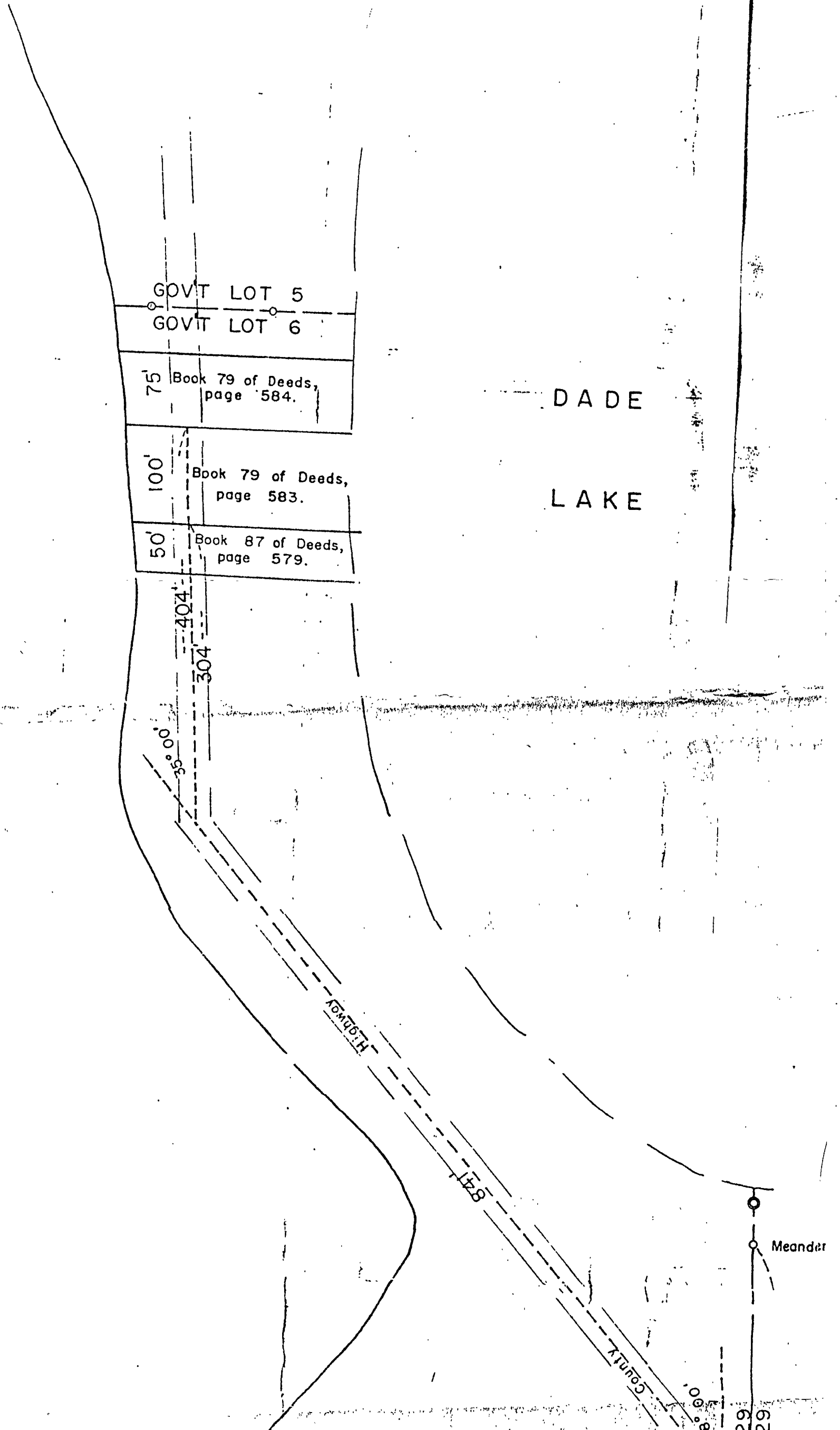


OF PART OF GOV'T LOT 6,
SEC. 31, T. 134 N., R. 29 W.

31-134-29



= 100 FEET.
MONUMENT.

APPROVED BY THE BOARD OF
COUNTY SUPERVISORS
COUNTY OF CALIFORNIA
Wilson

DERSON
and Surveyor
No. 3091

NOTE: This line along the
Highway used for North
in descriptions.

1500'

17432'

GOVT LOT 6, SEC 31 - 134 - 29
SEC. 32 - 134 - 29

ROAD

280'±

200'

610'±

450'

SOUTH LINECTION 31

660'

County