

Assessment & Tax List • 1954

Woodrow

INDEX TO SECTIONS

SECTION PAGE

Sec. 1	
" 2	
" 3	
" 4	
" 5	
" 6	
" 7	
" 8	
" 9	
" 10	
" 11	
" 12	
" 13	
" 14	
" 15	
" 16	
" 17	
" 18	
" 19	
" 20	
" 21	
" 22	
" 23	
" 24	
" 25	
" 26	
" 27	
" 28	
" 29	
" 30	
" 31	
" 32	
" 33	
" 34	
" 35	
" 36	

For Convenience of Auditor in Showing Boundaries of School Districts

Township No. .... Range No. .... Mer. P. M.

0	5	6	8	9	1
7	8	9	10	11	12
13	14	15	16	17	18
19	20	21	22	23	24
25	26	27	28	29	30
31	32	33	34	35	36

Handwritten notes on the grid:  
 - Section 16: "Ux"  
 - Section 22: "School District"  
 - Section 34: "34" inside a box

Part of Sec. 34 + 35 became no. 30 8-3-54 (see descriptions under those sections)

Devs. are also listed below:

Lots 1-2-4-5-7

Lot 6 less N. 100' W. of CAR# 45

NW 1/4 of NE 1/4

SE 1/4 of SW 1/4

all in Sec. 34-140-29

+ Lot 1 Sec. 35-140-29

Returns Showing Grain Received in or Handled by Elevators, Warehouses and Mills in the \_\_\_\_\_ of \_\_\_\_\_ in the County of \_\_\_\_\_ for the Year Ending May 1, 1954.

NAMES OF OWNERS	ADDRESS	Bushels of Wheat	Bushels of Soy Beans	Bushels of Flax	Total No. of Bushels of Wheat, Soy Beans and Flax	★ Tax of 1/2 Mill per Bushel		Bushels of Corn	Bushels of Barley	Bushels of Rye	Bushels of Oats	Bushels of Buckwheat	Bushels of all Other Grains	Total No. Bushels of Corn, Barley, Rye, Oats, Buckwheat and all Other Grains	★ Tax of 1/4 Mill Per Bushel		★ Total Tax		REMARKS		
						Dollars	Cts.								Dollars	Cts.	Dollars	Cts.			

Note ★ Assessors will not fill these Columns

10 11, 01

### SUMMARY OF TAX COLLECTION

Original Levy	- - - - -	\$ 18,221.28	
Additions	- - - - -	\$ 16.42	
		\$ 18,237.70	
Abatements	- - - - -	\$ 198.04	
		\$ 18,039.56	
COLLECTIONS			
March Settlement	- - - - -	\$ 3,054.39	
June Settlement	- - - - -	\$ 10,172.92	
November Settlement	- - - - -	\$ 3,594.68	
January Settlement	- - - - -	\$ 97.61	\$ 16,919.60
			\$
Over Collected	- - - - -	\$ 19.90	
Under Collected	- - - - -	\$	
Delinquent	- - - - -	\$ 1,129.86	\$ 1,129.96
Total	- - - - -	\$ 18,039.56	\$ 18,039.56

Interlachen Lodge  
Interlachen Lodge, Inc.  
Interlachen Lodge, Inc.  
Interlachen Lodge, Inc.  
Semi-Or-Set Lodge  
O'Neil Trail 2nd St

TABULAR SCHEDULE OF VALUATIONS,

LEVIED IN THE Town OF Woodrow

School District No.	VALUATION BY SCHOOL DISTRICTS				RATE OF STATE TAXES	RATE OF COUNTY TAXES					RATE OF TOWN TAXES										Total Rate of Town Tax	
	Agricultural Lands	Non-Agricultural Lands	Personal Property	Total Value of all Property except Money and Credits		Rev.	R. & B.	Welfare	Bonds and Int.	R. & B. Skg.	Rev.	R. & B.	Drag Tax	State Loan	Fire Phone	Local	Special	State Loan	Deficiency	Tuition		Transportation
Un	39158	25515	9419	74072	3.93	28.11	14.91	50.19	11.47	2.	106.69	4.7	20.3	1.	10.	5.1	41.1	1.	20.	40.	1.5	15.
30	405	455	-	860																		
	39563	25970	9419	74952																		
					N.H.S. 22																	
					9.15																	
Assessed Value	Rural	All Other	Personal Property	Total																		
Homestead	14898			14898																		
Non-Homestead	50635		9419	60054																		
Total	65533		9419	74952																		

RATES AND TAXES

COUNTY OF CASS, STATE OF MINNESOTA

SCHOOL TAXES		LOCAL 1 MILL AND SPECIAL SCHOOL TAXES BY DISTRICTS										ALL OTHER TAXES		
Total Rate of Sch'l Tax	Total Rate of all Taxes	Local 1 Mill	Special	State Loan	Def. Jump	C.O.	Total School Taxes	FUNDS	Rate	Amounts				
77.5	229.21	3916	78316	156632	5874	58737	3034.75	State - Non-Homestead,		31362				
97.5	249.21	3493	139736	139736	5240	52401	3406.06	State - Homestead,		29456				
98.72	250.43	41	1013	2529	81	356	4000	County Revenue,		210680				
123.72	275.43	46	2275	2841	68	399	5629	County Road and Bridge,		111743				
		7496	221340	301738	11243	111893	653710	County Welfare,		376174				
								Bonds and Interest		85960				
								R. & B. Sinking		14742				
										799547				
								Town Revenue,		35227				
								Town Road and Bridge,		152143				
								Town Drag,		7495				
								Town State Loan,						
								Fire		74952				
								Phone		38226				
										308043				
								School Local 1 Mill,		7496				
								School Special,		221340				
								School State Loan,						
								Deficiency		301738				
								Tuition		11243				
								Transportation		111893				
								Cap. Outlay		653710				

Total Taxes Real Estate 15,824.34  
 Pers. Prop. 2396.84  
 Total 18,221.18

Total Number of Acres 11,376.87  
 Total Levy, \$ 18,221.18  
 I, L. C. Peterson  
 Auditor of said County and State aforesaid, do hereby certify that the foregoing is a true and correct Schedule, showing the valuation of all the taxable property, in the Town of Woodrow, in said County, the several rates of Taxation and Totals of the several Tax Funds levied thereon for the year A. D. 1954.  
 Witness my hand and official seal, this 23rd day of December, A. D. 1954.  
L. C. Peterson County Auditor.  
By Helen Wilson, Deputy

SEAL

Interlachen Lodge, Inc. 1st Addn. Interlachen Lodge, Inc. Semi-Or-Sed Lodge of The Trail 2nd Addn.

COLLECTIONS OF TAXES OF 1954 *Lawn* OF *Woodrow*, CASS COUNTY, MINNESOTA

FUNDS	MARCH SETTLEMENT 1954	JUNE SETTLEMENT 1954	NOV. SETTLEMENT 1954	Amount Collected from Nov. 1953 to First Monday in Jan. 1954	REDUCTIONS	Total Reductions and Collected	BALANCE UNCOLLECTED	ADDITIONS	Total Uncollected to First Monday in January, 1954
State-Non-Homestead, State-Homestead,	8127 4758	17590 16583	4844 5853	141 165					
County Revenue, County Road and Bridge, County Welfare, County Bond and Interest, <i>A. &amp; B. Sinking</i>	34035 60768 13888 2422	118614 62915 211784 48399 8439	41864 22205 74748 17082 2979	1180 626 2106 481 84					
Town Revenue, Town Road and Bridge, Town Drag, Town State Loan, <i>Fire Phone</i>	5696 24579 1211 12108 6175	19832 85657 4220 42197 21520	7060 36233 1489 14893 7595	197 852 42 420 214					
School Local 1 Mill, School Special, School State Loan, Deficiency Tuition Transportation C. O.	1211 44004 48431 1816 18162	4219 116822 168908 6329 63262	1489 42125 60849 2235 21985	42 839 1679 63 630					
	305439	1017292	359468	9761					

	SCHOOL DISTRICT NO.	LOCAL 1 MILL	SPECIAL	STATE LOAN	Deficiency	Transport.	C. O.	TOTALS
MARCH SETTLEMENT	School District No. <i>A Um.</i>	221	4423		8047	332	3318	17141
	<i>Na Um.</i>	990	39581		39584	1484	14844	96483
	Totals	1211	44004		48431	1816	18162	113624
JUNE SETTLEMENT	School District No. <i>A Um.</i>	2544	51884		103767	3891	38913	201049
	<i>Na Um.</i>	1620	64802		64802	2430	24301	157955
	<i>A#30</i>	05	136		359	08	48	536
	Totals	4219	116822		168908	6329	63262	359540
NOVEMBER SETTLEMENT	School District No. <i>A Um.</i>	560	22420		22420	841	8408	54649
	<i>A Um.</i>	872	17436		34872	1308	13077	67565
	<i>A#30</i>	23	581		1450	35	204	2243
	<i>Na#30</i>	34	1681		2107	51	296	4176
	Totals	1489	42125		60849	2235	21985	150668
NOVEMBER to JANUARY	School District No. <i>A Um.</i>	42	839		1679	63	630	3253
	Totals	42	839		1679	63	630	3253
ADDITIONS	School District No.							
	Totals							
REDUCTIONS	School District No.							
	Totals							

International Lodge, Inc. 1st Addn.  
 International Lodge, Inc. 1st Addn.  
 International Lodge, Inc. 1st Addn.  
 International Lodge, Inc. 1st Addn.

Assessment Roll and Tax List of Real Property in the Town of Woodrow

\*Indicate Type of Property: R-Residential, C-Commercial, I-Industrial, U-Utility, F-Farm

Table with columns: IN WHOSE NAME ASSESSED, TO WHOM TRANSFERRED, DESCRIPTION OF PROPERTY, TRUE AND FULL VALUATIONS, ASSESSED VALUATIONS, FINAL EQUALIZED VALUE.

Cass County, Minnesota, for Taxes for the Year 1954.

Table with columns: SOLD FOR TAXES, VALUATIONS BY SCHOOL DISTRICTS AS EQUALIZED BY DEPARTMENT OF TAXATION, Tax including State Homestead, State Tax on Non-Homestead, SPECIAL TAXES, TOTAL TAXES, PAID, WHEN PAID, Number of Receipt, March Settlement 1955, June Settlement 1955, Penalty, November Settlement 1955, Collections to First Monday in January 1956, Delinquent on First Monday in January 1956, Total Delinquent Tax and Penalty, REMARKS.

Assessment Roll and Tax List of Real Property in the Town of Woodrow,  
\*Indicate Type of Property: R-Residential, C-Commercial, I-Industrial, U-Utility, F-Farm

Cass County, Minnesota, for Taxes for the Year 1954.

Table with columns: IN WHOSE NAME ASSESSED, TO WHOM TRANSFERRED, DESCRIPTION OF PROPERTY, TRUE AND FULL VALUATIONS, ASSESSED VALUATIONS, SOLD FOR TAXES, VALUATIONS BY SCHOOL DISTRICTS, TAXES, PAID, WHEN PAID, Number of Receipt, March Settlement 1955, June Settlement 1955, Penalty, November Settlement 1955, Penalty, Collections to First Monday in January 1956, Penalty, Delinquent on First Monday in January 1956, Total Delinquent Tax and Penalty, REMARKS.

Vertical text on the right edge of the page, including 'Interlachen Lodge' and 'Perfection Lodge, Inc.' repeated vertically.

Assessment Roll and Tax List of Real Property in the Town of Woodlawn

\*Indicate Type of Property: R-Residential, C-Commercial, I-Industrial, U-Utility, F-Farm

Table with columns: IN WHOSE NAME ASSESSED, TO WHOM TRANSFERRED, DESCRIPTION OF PROPERTY, TRUE AND FULL VALUATIONS, ASSESSED VALUATIONS, VALUATIONS BY SCHOOL DISTRICTS AS EQUALIZED BY DEPARTMENT OF TAXATION, TAX INCLUDING STATE HOMESTEAD, STATE TAX ON NON-HOMESTEAD, SPECIAL TAXES, TOTAL TAXES, PAID, WHEN PAID, Number of Receipt, March Settlement 1955, June Settlement 1955, Penalty, November Settlement 1955, Penalty, Collections to First Monday in January 1956, Penalty, Delinquent on First Monday in January 1956, Total Delinquent Tax and Penalty, REMARKS.

Interlachen Lodge, Interlachen Lodge, Inc., Semi-Or-Sol Lodge of The Trail 2nd St. Adm.



Assessment Roll and Tax List of Real Property in the Town of Woodrow, Cass County, Minnesota, for Taxes for the Year 1954.

\*Indicate Type of Property: R-Residential, C-Commercial, I-Industrial, U-Utility, F-Farm

Table with columns: IN WHOSE NAME ASSESSED, TO WHOM TRANSFERRED, DESCRIPTION OF PROPERTY, TRUE AND FULL VALUATIONS (RURAL, ALL OTHER, MACHINERY), ASSESSED VALUATIONS, FINAL EQUALIZED VALUE.

Cass County, Minnesota, for Taxes for the Year 1954.

Table with columns: VALUATIONS BY SCHOOL DISTRICTS AS EQUALIZED BY DEPARTMENT OF TAXATION, Tax including State Homestead, State Tax on Non-Homestead, SPECIAL TAXES, TOTAL TAXES, PAID, WHEN PAID, Number of Receipt, March Settlement 1955, June Settlement 1955, Penalty, November Settlement 1955, Collections to First Monday in January 1956, Delinquent on First Monday in January 1956, Total Delinquent Tax and Penalty, REMARKS.

Interlachen Lodge, Interlachen Lodge, Inc., Interlachen Lodge, Inc. Semi-Ord. Lodge, O'The Trail 2nd St. Adm.







Assessment Roll and Tax List of Real Property in the Town of Woodrow

\*Indicate Type of Property: R-Residential, C-Commercial, I-Industrial, U-Utility, F-Farm

Table with columns: IN WHOSE NAME ASSESSED, TO WHOM TRANSFERRED, DESCRIPTION OF PROPERTY, TRUE AND FULL VALUATIONS, ASSESSED VALUATIONS, VALUATIONS BY SCHOOL DISTRICTS AS EQUALIZED BY DEPARTMENT OF TAXATION, TAXES, PAID, WHEN PAID, Number of Receipt, March Settlement 1955, June Settlement 1955, November Settlement 1955, Collections to First Monday in January 1956, Delinquent on First Monday in January 1956, Total Delinquent Tax and Penalty, REMARKS.

45.29 acres Ogema Point  
4.6 acres Ogema Point

Subdivided into 20 parts

unplatted part of lot 3

unplatted 7,290' of lot 3

unplatted 7,200' of lot 3

unplatted 7,399' of lot 3

Part lot 3 Platted as Ogema Point

Refund wt. ch # 5865 3.62 4-12-55

PAID IN FULL JAN 14 1955

PAID IN FULL MAY 10 1955

PAID IN FULL APR 25 1955

3.62 abate

Interlachen Lodge  
Interlachen Lodge, Inc.  
Interlachen Lodge, Inc. Semi-Or-Sed Lodge  
O'Neil Trail 2nd St

Assessment Roll and Tax List of Real Property in the Town of Woodrow, Cass County, Minnesota, for Taxes for the Year 1954.

Table with columns: IN WHOSE NAME ASSESSED, TO WHOM TRANSFERRED, DESCRIPTION OF PROPERTY, TRUE AND FULL VALUATIONS, ASSESSED VALUATIONS, VALUATIONS BY SCHOOL DISTRICTS AS EQUALIZED BY DEPARTMENT OF TAXATION, TAX INCLUDING STATE HOMESTEAD, STATE TAX ON NON-HOMESTEAD, SPECIAL TAXES, TOTAL TAXES, PAID, WHEN PAID, Number of Receipt, March Settlement 1955, June Settlement 1955, Penalty, November Settlement 1955, Collections to First Monday in January 1956, Delinquent on First Monday in January 1956, Total Delinquent Tax and Penalty, REMARKS.

C & B Corporation

C & B Corporation

State of Minnesota

Arthur L & Daisy P. Gooding

State of Minnesota

Theodore J. Guanita Gagnon & Eunice H. Nagel

J. E. Nordquist

Interlachen Lodge, Inc. 1st Adm. Interlachen Lodge, Inc. Semi-Or-Sed Lodge # 0' The Trail 2nd Adm.

Assessment Roll and Tax List of Real Property in the Town of Woodrow

\*Indicate Type of Property: R-Residential, C-Commercial, I-Industrial, U-Utility, F-Farm

Table with columns: IN WHOSE NAME ASSESSED, TO WHOM TRANSFERRED, DESCRIPTION OF PROPERTY, TRUE AND FULL VALUATIONS, ASSESSED VALUATIONS, and FINAL EQUALIZED VALUE. Includes handwritten entries for various property owners like Maurice S. Norton and Betty M. Sahodny.

Cass County, Minnesota, for Taxes for the Year 1954.

Table with columns: SOLD FOR TAXES, VALUATIONS BY SCHOOL DISTRICTS AS EQUALIZED BY DEPARTMENT OF TAXATION, State Tax on Non-Homestead, SPECIAL TAXES, TOTAL TAXES, PAID, WHEN PAID, Number of Receipt, March Settlement 1955, June Settlement 1955, Penalty, November Settlement 1955, Penalty, Collections to First Monday in January 1956, Delinquent on First Monday in January 1956, Total Delinquent Tax and Penalty, and REMARKS. Includes handwritten entries for various property owners and tax amounts.

Vertical text on the right edge of the page, possibly a page number or reference.

Assessment Roll and Tax List of Real Property in the Town of Woodrow

\*Indicate Type of Property: R-Residential, C-Commercial, I-Industrial, U-Utility, F-Farm

Table with columns: IN WHOSE NAME ASSESSED, TO WHOM TRANSFERRED, DESCRIPTION OF PROPERTY, TRUE AND FULL VALUATIONS, ASSESSED VALUATIONS, FINAL EQUALIZED VALUE.

Cass County, Minnesota, for Taxes for the Year 1954.

Table with columns: VALUATIONS BY SCHOOL DISTRICTS AS EQUALIZED BY DEPARTMENT OF TAXATION, TAX INCLUDING STATE HOMESTEAD, STATE TAX ON NON-HOMESTEAD, SPECIAL TAXES, TOTAL TAXES, PAID, WHEN PAID, Number of Receipt, March Settlement 1955, June Settlement 1955, November Settlement 1955, Penalty, Collections to First Monday in January 1956, Delinquent on First Monday in January 1956, Total Delinquent Tax and Penalty, REMARKS.



Assessment Roll and Tax List of Real Property in the *Town of Woodrow*

\*Indicate Type of Property: R-Residential, C-Commercial, I-Industrial, U-Utility, F-Farm

Form 500 (54) - WALKER-BAY COMPANY, MINNEAPOLIS

Table with columns: IN WHOSE NAME ASSESSED, TO WHOM TRANSFERRED, DESCRIPTION OF PROPERTY, TRUE AND FULL VALUATIONS, ASSESSED VALUATIONS, FINAL EQUALIZED VALUE.

Table with columns: SOLD FOR TAXES, VALUATIONS BY SCHOOL DISTRICTS AS EQUALIZED BY DEPARTMENT OF TAXATION, SPECIAL TAXES, TOTAL TAXES, PAID, WHEN PAID, Number of Receipt, March Settlement 1955, June Settlement 1955, Penalty, November Settlement 1955, Collections to First Monday in January 1956, Delinquent on First Monday in January 1956, Total Delinquent Tax and Penalty, REMARKS.

Interlachen Lodge, Inc. 1st. Adm. Interlachen Lodge, Inc. Semi-Or-Sed Lodge of The Trail 2nd Adm.







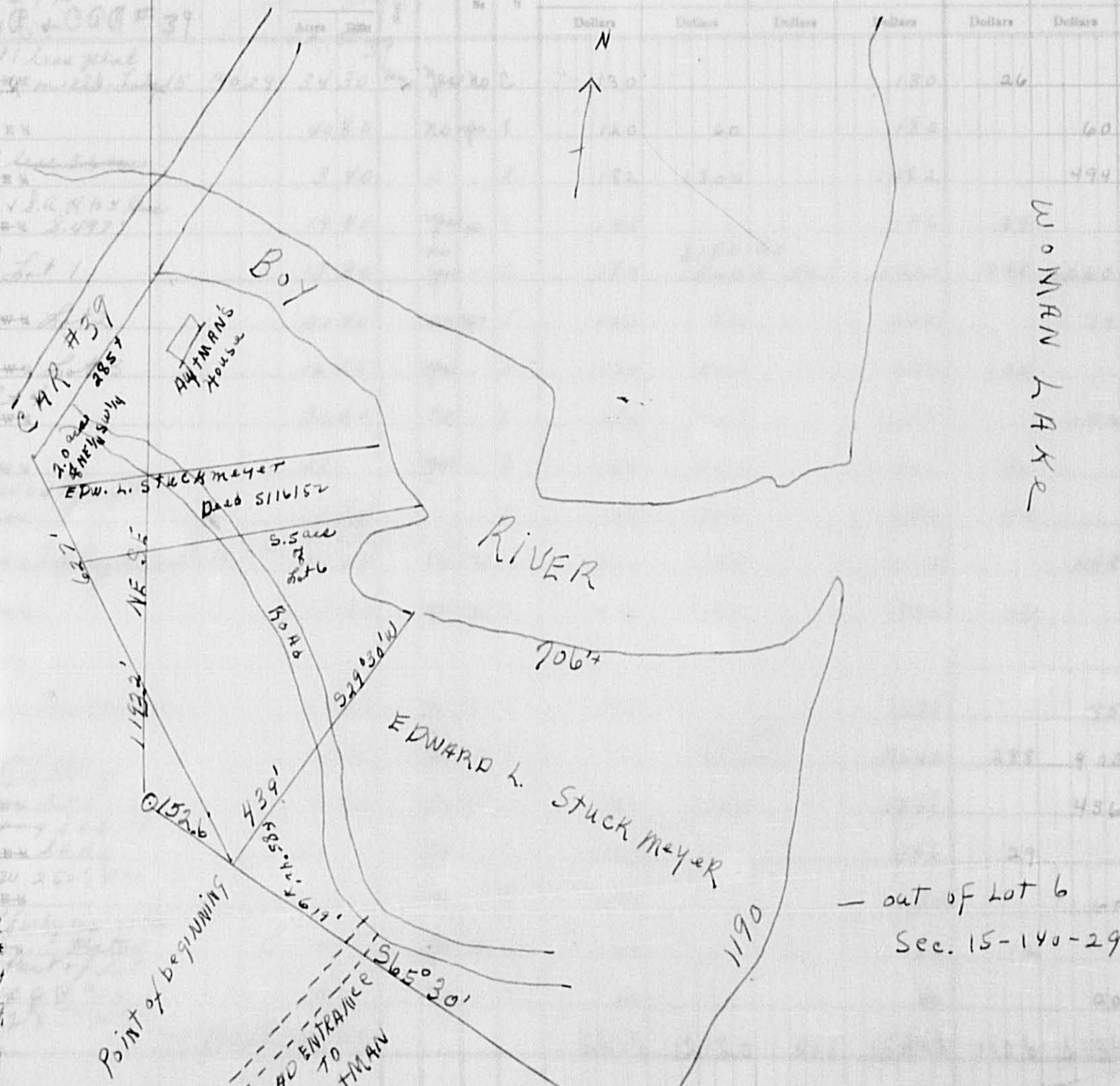
Assessment Roll and Tax List - Real Property in the

Woodrow TWP.

Indicate Type of Property: R-Residential, C-Commercial, I-Industrial, U-Utility, F-Farm

Form SCD (54) - MILES-SAYRE COMPANY, MINNEAPOLIS

IN WHOSE NAME ASSESSED	TO WHOM TRANSFERRED	SUBDIVISION	Section	Town	Range	TRUE AND FAIR VALUATIONS				SPECIAL VALUATIONS				FINAL EQUALIZED VALUE
						LAND	IMPROVEMENTS	MACHINERY	TOTAL	OTHER	MACHINERY	TOTAL ASSESSED	Total Assessed	
Nicholas J. Sanboerf	John L. Barnes	Center	140-29											
Enos Stanley														
Henry Mestrum & Geo. Mueps														
Chas. F. & Maude H. Mains														
Kenneth & Viola M. Zimmerman														
Karl G. R. & Anna Hawkins														
Kenneth W. & June E. Shing														
F. M. & Annie Roducks														
Claude Bengley														
Harvey & Ella Aultman	Norman K. Hanson													
S. O. Park														
State of Minnesota														
Harvey & Ella Aultman	Norman K. Hanson													
Flower M. Goswisch & Irving H. Paul														
Schoenfeld Hunter-Kitch Drilling Co.														
Chas. F. & Maude H. Mains														
Kenneth W. & June E. Shing														
Raymond R. & Maimie Palony														
D. L. & Josephine Schoenfeld														
Otto Heden Henning														



out of lot 6 Sec. 15-140-29

Cass County, Minnesota, for Taxes for the Year 1954.

SOLD FOR TAXES	VALUATIONS BY SCHOOL DISTRICTS AS EQUALIZED BY DEPARTMENT OF TAXATION						Tax including State Homestead	State Tax on Non-Homestead	SPECIAL TAXES	TOTAL TAXES	PAID	WHEN PAID	Number of Receipt	March Settlement 1955	June Settlement 1955	Penalty	November Settlement 1955	Penalty	Collections to First Monday in January 1956	Penalty	Delinquent on First Monday in January 1956	Total Delinquent Tax and Penalty	REMARKS	
	District No.	Rate	District No.	Rate	District No.	Rate																		
1										648														
2										1376	32													
3										11327	258													
4										972														
5										39250	640													
6										1696	38													
7										2888														
8										3484	80													
9										1856														
10										1788														
11										8424	176													
12										1810														
13																								
14										1032	24													
15										17146	208													
16										9994	228													
17										664														
18										1376	32													
19										300														
20										498	10													

Interlachen Lodge, Inc. 1st addn. Interlachen Lodge, Inc. Semi-Or-Sea Lodge, Inc. 1st addn. Interlachen Lodge, Inc. 1st addn.



Assessment Roll and Tax List of Real Property in the Town of Woodrow, Cass County, Minnesota, for Taxes for the Year 1954.

Form 5CD (54) MALAR-SAYB COMPANY, MINNEAPOLIS

Table with columns: IN WHOSE NAME ASSESSED, TO WHOM TRANSFERRED, DESCRIPTION OF PROPERTY, TRUE AND FULL VALUATIONS, ASSESSED VALUATIONS (RURAL, ALL OTHER, MACHINERY), VALUATIONS BY SCHOOL DISTRICTS AS EQUALIZED BY DEPARTMENT OF TAXATION, TAX INCLUDING STATE HOMESTEAD, SPECIAL TAXES, TOTAL TAXES, PAID, WHEN PAID, Number of Receipt, March, June, November Settlements, Penalty, Collections to First Monday in January 1956, Delinquent on First Monday in January 1956, Total Delinquent Tax and Penalty, REMARKS.

John G. Mudd & Grant Herman C. & Marie Stein

Herman C. & Marie Stein

Chas. A. & Harriet E. Powell

Edwood L. & Harriet Peterson

Mar F. & Edward L. Stuckmeyer Jr.

Edwood L. & Harriet Peterson

Claude & Luella Mae Sensley

Edward L. & Marie Stuckmeyer

Julius M. & Marie Larson

(Continued on next page)

Interlachen Lodge, Inc. 1st add. Interlachen Lodge, Inc. Semi-Or-Sec Lodge 1st add. Of The Trail 2nd Addn.







Assessment Roll and Tax List of Real Property in the Town of Woodrow, Cass County, Minnesota, for Taxes for the Year 1954.

Cass County, Minnesota, for Taxes for the Year 1954.

Table with columns: IN WHOSE NAME ASSESSED, TO WHOM TRANSFERRED, DESCRIPTION OF PROPERTY, TRUE AND FULL VALUATIONS, ASSESSED VALUATIONS, FINAL EQUALIZED VALUE, SOLD FOR TAXES, VALUATIONS BY SCHOOL DISTRICTS, TAXES, PAID, WHEN PAID, Number of Receipt, March Settlement, June Settlement, November Settlement, Collections to First Monday, Delinquent on First Monday, Total Delinquent Tax and Penalty, REMARKS.

Interlachen Lodge, Inc. 1st addn. Interlachen Lodge, Inc. Semi-Or-Sad Lodge and Or The Trail 2nd Addn.

Assessment Roll and Tax List of Real Property in the Town of Woodrow

Cass County, Minnesota, for Taxes for the Year 1954.

\*Indicate Type of Property: R-Residential, C-Commercial, I-Industrial, U-Utility, F-Farm

Table with columns: IN WHOSE NAME ASSESSED, TO WHOM TRANSFERRED, DESCRIPTION OF PROPERTY, TRUE AND FULL VALUATIONS, ASSESSED VALUATIONS, VALUATIONS BY SCHOOL DISTRICTS, TAXES, PAID, WHEN PAID, Number of Receipt, March Settlement, June Settlement, November Settlement, Collections to First Monday in January, Delinquent on First Monday in January, Total Delinquent Tax and Penalty, REMARKS.

Interaction Lodge, Inc. 1st Addn. Interaction Lodge, Inc. 1st Addn. Interaction Lodge, Inc. 1st Addn. Interaction Lodge, Inc. 1st Addn.

Assessment Roll and Tax List of Real Property in the Town of Woodrow

\*Indicate Type of Property: R-Residential, C-Commercial, I-Industrial, U-Utility, F-Farm

Form 504 (54) WISCONSIN COUNTY, MINNESOTA

Table with columns: IN WHOSE NAME ASSESSED, TO WHOM TRANSFERRED, SUBDIVISION, TRUE AND FULL VALUATIONS (LAND, BUILDINGS, MACHINERY, TOTAL), ASSESSED VALUATIONS (RURAL, ALL OTHER, MACHINERY, TOTAL ASSESSED), FINAL EQUALIZED VALUE.

Cass County, Minnesota, for Taxes for the Year 1954.

Table with columns: SOLD FOR TAXES, VALUATIONS BY SCHOOL DISTRICTS AS EQUALIZED BY DEPARTMENT OF TAXATION, SPECIAL TAXES, TOTAL TAXES, PAID, WHEN PAID, Number of Receipt, March Settlement 1955, June Settlement 1955, Penalty, November Settlement 1955, Penalty, Collections to First Monday in January 1956, Penalty, Delinquent on First Monday in January 1956, Total Delinquent Tax and Penalty, REMARKS.

Assessment Roll and Tax List of Real Property in the Town of Woodrow

\*Indicate Type of Property: R-Residential, C-Commercial, I-Industrial, U-Utility, F-Farm

Table with columns: IN WHOSE NAME ASSESSED, TO WHOM TRANSFERRED, DESCRIPTION OF PROPERTY, TRUE AND FULL VALUATIONS, ASSESSED VALUATIONS, and FINAL EQUALIZED VALUE.

Cass County, Minnesota, for Taxes for the Year 1954.

Table with columns: VALUATIONS BY SCHOOL DISTRICTS AS EQUALIZED BY DEPARTMENT OF TAXATION, Tax including State Homestead, State Tax on Non-Homestead, SPECIAL TAXES, TOTAL TAXES, PAID, WHEN PAID, Number of Receipt, March Settlement 1955, June Settlement 1955, Penalty, November Settlement 1955, Collections to First Monday in January 1956, Delinquent on First Monday in January 1956, Total Delinquent Tax and Penalty, REMARKS.

Vertical text on the right edge of the page: Inter-lachen Lodge, Inter-lachen Lodge, Inc., Inter-lachen Lodge, Inc., Semi-Or-Sed Lodge, O'The Trail 2nd

Assessment Roll and Tax List of Real Property in the Town of Woodrow

Indicate Type of Property: R-Residential, C-Commercial, I-Industrial, U-Utility, F-Farm

Form SCD (54) - HALL-DAVE COMPANY, MINNEAPOLIS

Table with columns: IN WHOSE NAME ASSESSED, TO WHOM TRANSFERRED, DESCRIPTION OF PROPERTY, TRUE AND FULL VALUATIONS, ASSESSED VALUATIONS, and FINAL EQUALIZED VALUE. Includes entries for State of Minnesota, Harold E. Dickinson & Harold N. Fillman, Edmund & Elsie Toll, George A. Johnson, and Edmund A. Toll.

Cass County, Minnesota, for Taxes for the Year 1954.

Table with columns: SOLD FOR TAXES, VALUATIONS BY SCHOOL DISTRICTS AS EQUALIZED BY DEPARTMENT OF TAXATION, Tax including State Homestead, State Tax on Non-Homestead, SPECIAL TAXES, TOTAL TAXES, PAID, WHEN PAID, Number of Receipt, March Settlement 1955, June Settlement 1955, Penalty, November Settlement 1955, Penalty, Collections to First Monday in January 1956, Delinquent on First Monday in January 1956, Total Delinquent Tax and Penalty, REMARKS. Includes entries for 1-20 with tax amounts and payment dates.

Vertical text on the right margin: Inter-lachen Lodge, Inc. 1st. Addr.

Assessment Roll and Tax List of Real Property in the Town of Woodrow

\*Indicate Type of Property: R-Residential, C-Commercial, I-Industrial, U-Utility, F-Farm

Form SCD-154

Table with columns: IN WHOSE NAME ASSESSED, TO WHOM TRANSFERRED, DESCRIPTION OF PROPERTY, TRUE AND FULL VALUATIONS, ASSESSED VALUATIONS, and FINAL EQUALIZED VALUE. Includes entries for Joseph & Mahel C. Fredericks, Galmer M. & Marie Larson, and others.

Cass County, Minnesota, for Taxes for the Year 1954.

Table with columns: VALUATIONS BY SCHOOL DISTRICTS AS EQUALIZED BY DEPARTMENT OF TAXATION, Tax including State Homestead, State Tax on Non-Homestead, SPECIAL TAXES, TOTAL TAXES, PAID, WHEN PAID, Number of Receipt, March Settlement 1955, June Settlement 1955, Penalty, November Settlement 1955, Collections to First Monday in January 1956, Delinquent on First Monday in January 1956, Total Delinquent Tax and Penalty, and REMARKS. Includes entries for 1-20 and 19-20.

Vertical text on the right edge of the page, including 'Interlachen Lodge' and 'The Trail 2nd'.

Assessment Roll and Tax List of Real Property in the Town of Woodrow

\*Indicate Type of Property: R-Residential, C-Commercial, I-Industrial, U-Utility, F-Farm

Table with columns: IN WHOSE NAME ASSESSED, TO WHOM TRANSFERRED, DESCRIPTION OF PROPERTY, TRUE AND FULL VALUATIONS, ASSESSED VALUATIONS, FINAL EQUALIZED VALUE.

Cass County, Minnesota, for Taxes for the Year 1954.

Table with columns: SOLD FOR TAXES, VALUATIONS BY SCHOOL DISTRICTS AS EQUALIZED BY DEPARTMENT OF TAXATION, Tax including State Homestead, State Tax on Non-Homestead, SPECIAL TAXES, TOTAL TAXES, PAID, WHEN PAID, Number of Receipt, March Settlement 1955, June Settlement 1955, Penalty, November Settlement 1955, Penalty, Collections to First Monday in January 1956, Delinquent on First Monday in January 1956, Total Delinquent Tax and Penalty, REMARKS.





Assessment Roll and Tax List of Real Property in the Town of Woodrow

\*Indicate Type of Property: R-Residential, C-Commercial, I-Industrial, U-Utility, F-Farm

Form 501 (5-1) MILLER-DAY COMPANY, MINNEAPOLIS

Table with columns: IN WHOSE NAME ASSESSED, TO WHOM TRANSFERRED, DESCRIPTION OF PROPERTY, TRUE AND FULL VALUATIONS, ASSESSED VALUATIONS, FINAL EQUALIZED VALUE.

Cass County, Minnesota, for Taxes for the Year 1954.

Table with columns: SOLD FOR TAXES, VALUATIONS BY SCHOOL DISTRICTS AS EQUALIZED BY DEPARTMENT OF TAXATION, SPECIAL TAXES, TOTAL TAXES, PAID, WHEN PAID, Number of Receipt, March Settlement 1955, June Settlement 1955, Penalty, November Settlement 1955, Collections to First Monday in January 1956, Delinquent on First Monday in January 1956, Total Delinquent Tax and Penalty, REMARKS.





Assessment Roll and Tax List of Real Property in the Town of Woodson

\*Indicate Type of Property: R-Residential, C-Commercial, I-Industrial, U-Utility, F-Farm

Form SCD (54) WALKER-BAYNE COMPANY, MINNEAPOLIS

Table with columns: IN WHOSE NAME ASSESSED, TO WHOM TRANSFERRED, DESCRIPTION OF PROPERTY, TRUE AND FULL VALUATIONS, ASSESSED VALUATIONS, and FINAL EQUALIZED VALUE.

Cass County, Minnesota, for Taxes for the Year 1954.

Table with columns: VALUATIONS BY SCHOOL DISTRICTS AS EQUALIZED BY DEPARTMENT OF TAXATION, TAXES, PAID, WHEN PAID, and REMARKS.

Vertical text on the right edge of the page, including 'Interlachen Lodge' and 'The Trail'.

Assessment Roll and Tax List of Real Property in the Town of Woodrow

\*Indicate Type of Property: R-Residential, C-Commercial, I-Industrial, U-Utility, F-Farm

Table with columns: IN WHOSE NAME ASSESSED, TO WHOM TRANSFERRED, DESCRIPTION OF PROPERTY, TRUE AND FULL VALUATIONS, ASSESSED VALUATIONS, VALUATIONS BY SCHOOL DISTRICTS AS EQUALIZED BY DEPARTMENT OF TAXATION, SOLD FOR TAXES, PAID, WHEN PAID, Number of Receipt, March Settlement 1955, June Settlement 1955, November Settlement 1955, Penalty, Collections to First Monday in January 1956, Delinquent on First Monday in January 1956, Total Delinquent Tax and Penalty, REMARKS.

Interlachen Lodge, Interlachen Lodge, Inc., 1st. adn., Interlachen Lodge, Inc., Semi-Or-Sed Lodge, O'Neil Trail 2nd

Assessment Roll and Tax List of Real Property in the Town of Woodrow

Cass County, Minnesota, for Taxes for the Year 1954.

\*Indicate Type of Property: R-Residential, C-Commercial, I-Industrial, U-Utility, F-Farm

Table with columns: IN WHOSE NAME ASSESSED, TO WHOM TRANSFERRED, DESCRIPTION OF PROPERTY, TRUE AND FULL VALUATIONS, ASSESSED VALUATIONS, VALUATIONS BY SCHOOL DISTRICTS AS EQUALIZED BY DEPARTMENT OF TAXATION, TAXES, PAID, WHEN PAID, Number of Receipt, March Settlement 1955, June Settlement 1955, November Settlement 1955, Collections to First Monday in January 1956, Delinquent on First Monday in January 1956, Total Delinquent Tax and Penalty, REMARKS.

Albert C. & Hattie M. Gabbert
Frank E. & Janet O. Brown
Albert C. & Hattie M. Gabbert
Carl A. Ryan
Janet O. & Frank Brown
Hattie M. Gabbert
Albert C. Gabbert
Janet O. & Frank Brown

Bonna Park
Sherman O. & Edyth Anderson

Sherman O. & Edyth Anderson

543 25
3912 1512
524 692 588
1280

Interlachen Lodge, Inc. 1st. adn.
Interlachen Lodge, Inc. Semi-Or-Sed Lodge
O'Neil Trail 2nd

Assessment Roll and Tax List of Real Property in the Town of Woodrow

\*Indicate Type of Property: R-Residential, C-Commercial, I-Industrial, U-Utility, F-Farm

Table with columns: IN WHOSE NAME ASSESSED, TO WHOM TRANSFERRED, DESCRIPTION OF PROPERTY, TRUE AND FULL VALUATIONS, ASSESSED VALUATIONS, FINAL EQUALIZED VALUE. Includes handwritten entries for various lots and owners like Everett W. Eckberg and Clarence & Eva Hawley.

Cass County, Minnesota, for Taxes for the Year 1954.

Table with columns: VALUATIONS BY SCHOOL DISTRICTS AS EQUALIZED BY DEPARTMENT OF TAXATION, Tax including State Homestead, State Tax on Non-Homestead, SPECIAL TAXES, TOTAL TAXES, PAID, WHEN PAID, Number of Receipt, March Settlement 1955, June Settlement 1955, November Settlement 1955, Penalty, Collections to First Monday in January 1956, Delinquent on First Monday in January 1956, Total Delinquent Tax and Penalty, REMARKS. Includes handwritten tax amounts and payment dates.

Interlachen Lodge, Interlachen Lodge, Inc., 1st. Adm., Interlachen Lodge, Inc., Semi-Or-Sed Lodge, and O'Neil Trail 2nd Adm.





Assessment Roll and Tax List of Real Property in the Town of Woodrow

\*Indicate Type of Property: R-Residential, C-Commercial, I-Industrial, U-Utility, F-Farm

IN WHOSE NAME ASSESSED	TO WHOM TRANSFERRED	DESCRIPTION OF PROPERTY					ASSESSED VALUATIONS										FINAL EQUALIZED VALUE	
		SUBDIVISION	Sec. of Lot	Town or Block	Rng	Number of Acres of Land	TRUE AND FULL VALUATIONS					RURAL						Total Assessed Value as Equalized by the Board of Review
							LAND Exclusive of Structures and Improvements	BUILDINGS and Other Structures	MACHINERY Permanently Attached to Real Estate	TOTAL True and Full Value	RURAL		ALL OTHER		MACHINERY Permanently Attached to Real Estate	TOTAL ASSESSED VALUE		
											Homestead Up to \$4,000 20%	Over \$4,000 and Non-Homestead 33 1/3%	Homestead Up to \$1,000 25%	Over \$4,000 and Non-Homestead 40%				
No. School District	Indicate Homestead Yes or No	Indicate Agricultural Yes or No	Indicate Type of Property	Dollars	Dollars	Dollars	Dollars	Dollars	Dollars	Dollars	Dollars	Dollars	Dollars					
Frank Schaffer		NE 1/4 of NE 1/4 Lot 1	33	140	29	37.70	No	No	T	303					303	101		101
"		NW 1/4 of NE 1/4				40	"	"	T	240					240	80		80
State of Minnesota		SW 1/4 of NE 1/4					"	"	L									
Charles P. + Matilda Sandtrick		1/2 of Lot 2				31.15	"	"	L	131	400				531	177		177
Harry M. + Jesse A. Finell		1/2 of Lot 2					"	"	L	131	400				531	177		177
State of Minnesota		NE 1/4 of NW 1/4																
State of Minnesota		NW 1/4 of NW 1/4																
State of Minnesota		SW 1/4 of NW 1/4																
State of Minnesota		SE 1/4 of NW 1/4																
State of Minnesota		NE 1/4 of SW 1/4																
State of Minnesota		NW 1/4 of SW 1/4																
State of Minnesota		SW 1/4 of SW 1/4																
State of Minnesota		SE 1/4 of SW 1/4																
Arvid + Lorraine Anderson		NE 1/4 of SE 1/4 Lot 3				32.65	No	"	T	222					222	74		74
Mary V. Farnum		NW 1/4 of SE 1/4																
State of Minnesota		SW 1/4 of SE 1/4 Lot 4																
Hollister W. + Geo. W. Gorden		SE 1/4 of SE 1/4 Lot 5				8.95	No	"	L	135					135	45		45
						140.45				1162	800				1962	654		654

Cass County, Minnesota, for Taxes for the Year 1954.

SOLD FOR TAXES	VALUATIONS BY SCHOOL DISTRICTS AS EQUALIZED BY DEPARTMENT OF TAXATION						Tax including State Homestead	State Tax on Non-Homestead	SPECIAL TAXES	TOTAL TAXES	PAID	WHEN PAID	Number of Receipt	March Settlement 1955	June Settlement 1955	Penalty	November Settlement 1955	Penalty	Collections to First Monday in January 1956	Penalty	Delinquent on First Monday in January 1956	Total Delinquent Tax and Penalty	REMARKS
	District No.	District No.	District No.	District No.	District No.	District No.																	
	Rate	Rate	Rate	Rate	Rate	Rate																	
	Mills	Mills	Mills	Mills	Mills	Mills																	
1						2316	52		2368	1	PAID IN FULL MAY 31 1955	13135		2368									
2						1834	42		1876	2	PAID IN FULL MAY 31 1955			1876									
3										3													
4						4058	92		4150	4	PAID IN FULL MAY 31 1955	13132		4150									
5						4058	92		4150	5	PAID IN FULL MAY 31 1955	13134		4150									
6										6													
7										7													
8										8													
9										9													
10										10													
11										11													
12										12													
13										13													
14										14													
15										15	1st Half Paid MAY 31 1955	13133		867									
16										16	2nd Half Paid - OCT 31 1955	15923											
17										17													
18										18													
19										19													
20										20													

Interlachen Lodge, Inc. Semi-Or-Sed Lodge No. 19, Adm. O'Neil Trail 2nd Adm.

Assessment Roll and Tax List of Real Property in the Town of Woodrow

\*Indicate Type of Property: R-Residential, C-Commercial, I-Industrial, U-Utility, F-Farm

Table with columns: IN WHOSE NAME ASSESSED, TO WHOM TRANSFERRED, DESCRIPTION OF PROPERTY, TRUE AND FULL VALUATIONS (RURAL, ALL OTHER, MACHINERY), TOTAL ASSESSED VALUE, FINAL EQUALIZED VALUE.

Cass County, Minnesota, for Taxes for the Year 1954.

Table with columns: SOLD FOR TAXES, VALUATIONS BY SCHOOL DISTRICTS AS EQUALIZED BY DEPARTMENT OF TAXATION, Tax including State Homestead, State Tax on Non-Homestead, SPECIAL TAXES, TOTAL TAXES, PAID, WHEN PAID, Number of Receipt, March Settlement 1955, June Settlement 1955, Penalty, November Settlement 1955, Collections to First Monday in January 1956, Delinquent on First Monday in January 1956, Total Delinquent Tax and Penalty, REMARKS.

Vertical text on the right edge of the page, including 'Interlachen Lodge, Inc.' and other marginal notes.

Assessment Roll and Tax List of Real Property in the Town of Woodrow

Indicate Type of Property: R-Residential, C-Commercial, I-Industrial, U-Utility, F-Farm

Table with columns: IN WHOSE NAME ASSESSED, TO WHOM TRANSFERRED, DESCRIPTION OF PROPERTY, TRUE AND FULL VALUATIONS (RURAL, ALL OTHER, MACHINERY), TOTAL ASSESSED VALUE, FINAL EQUALIZED VALUE.

(Continued on next page)

Cass County, Minnesota, for Taxes for the Year 1954.

Table with columns: VALUATIONS BY SCHOOL DISTRICTS AS EQUALIZED BY DEPARTMENT OF TAXATION, Tax including State Homestead, State Tax on Non-Homestead, SPECIAL TAXES, TOTAL TAXES, PAID, WHEN PAID, Number of Receipt, March Settlement 1955, June Settlement 1955, Penalty, November Settlement 1955, Collections to First Monday in January 1956, Delinquent on First Monday in January 1956, Total Delinquent Tax and Penalty, REMARKS.

Interlachen Lodge, Inc. 1st addn. Interlachen Lodge, Inc. 2nd addn. Interlachen Lodge, Inc. 3rd addn. Interlachen Lodge, Inc. 4th addn. Interlachen Lodge, Inc. 5th addn.



Cass County, Minnesota, for Taxes for the Year 1954.

Assessment Roll and Tax List of Real Property in the Town of Woodrow

\*Indicate Type of Property: R-Residential, C-Commercial, I-Industrial, U-Utility, F-Farm

Table with columns: IN WHOSE NAME ASSESSED, TO WHOM TRANSFERRED, DESCRIPTION OF PROPERTY, TRUE AND FULL VALUATIONS (RURAL, ALL OTHER, MACHINERY), ASSESSED VALUATIONS, FINAL EQUALIZED VALUE, VALUATIONS BY SCHOOL DISTRICTS AS EQUALIZED BY DEPARTMENT OF TAXATION, TAX INCLUDING STATE HOMESTEAD, SPECIAL TAXES, TOTAL TAXES, PAID, WHEN PAID, Number of Receipt, March Settlement 1955, June Settlement 1955, November Settlement 1955, Penalty, Collections to First Monday in January 1956, Delinquent on First Monday in January 1956, Total Delinquent Tax and Penalty, REMARKS.

Form 504 (54) MILLER-BAYNE COMPANY, MINNEAPOLIS

IN WHOSE NAME ASSESSED

TO WHOM TRANSFERRED

DESCRIPTION OF PROPERTY

TRUE AND FULL VALUATIONS

ASSESSED VALUATIONS

FINAL EQUALIZED VALUE

VALUATIONS BY SCHOOL DISTRICTS AS EQUALIZED BY DEPARTMENT OF TAXATION

TAX INCLUDING STATE HOMESTEAD, SPECIAL TAXES, TOTAL TAXES, PAID, WHEN PAID, Number of Receipt, March Settlement 1955, June Settlement 1955, November Settlement 1955, Penalty, Collections to First Monday in January 1956, Delinquent on First Monday in January 1956, Total Delinquent Tax and Penalty, REMARKS

Norman & Ellen Walters

Gilbert Norman

Franklin Transformer Mfg. Co., Inc

William S. Stacy

Gilbert Norman

" "

State of Minnesota

Joe Buckelmeyer

McKinley & Helen Highley

State of Minnesota

State of Minnesota

State of Minnesota

State of Minnesota

400 20

2314 160 3070 233 637

870

H 233 637 870

19934 330

20264

17270

2994

Interlachen Lodge, Inc. 1st Adm. Interlachen Lodge, Inc. Semi-Or-Sed Lodge of O'The Trail 2nd Adm.



Assessment Roll and Tax List of Real Property in the Town of Woodrow

\*Indicate Type of Property: R-Residential, C-Commercial, I-Industrial, U-Utility, F-Farm

Table with columns: IN WHOSE NAME ASSESSED, TO WHOM TRANSFERRED, SUBDIVISION, DESCRIPTION OF PROPERTY, TRUE AND FULL VALUATIONS (RURAL, ALL OTHER, MACHINERY, TOTAL ASSESSED VALUE), FINAL EQUALIZED VALUE.

Cass County, Minnesota, for Taxes for the Year 1954.

Table with columns: VALUATIONS BY SCHOOL DISTRICTS AS EQUALIZED BY DEPARTMENT OF TAXATION, Tax including State Homestead, SPECIAL TAXES, TOTAL TAXES, PAID, WHEN PAID, Number of Receipt, March Settlement 1955, June Settlement 1955, Penalty, November Settlement 1955, Penalty, Collections to First Monday in January 1956, Delinquent on First Monday in January 1956, Total Delinquent Tax and Penalty, REMARKS.

Interlachen Lodge

Interlachen Lodge, Inc. 1st. addr. Interlachen Lodge, Inc. Semi-0r-See Lodge and Or The Trail 2nd



Assessment Roll and Tax List of Real Property in the Town of Woodrow

\*Indicate Type of Property: R-Residential, C-Commercial, I-Industrial, U-Utility, F-Farm

Form 50 (54) MILLER-DAY COMPANY, MINNEAPOLIS

Table with columns: IN WHOSE NAME ASSESSED, TO WHOM TRANSFERRED, SUBDIVISION, Description of Property, TRUE AND FULL VALUATIONS (RURAL, ALL OTHER, MACHINERY, TOTAL ASSESSED VALUE), FINAL EQUALIZED VALUE.

Cass County, Minnesota, for Taxes for the Year 1954.

Table with columns: VALUATIONS BY SCHOOL DISTRICTS AS EQUALIZED BY DEPARTMENT OF TAXATION, Tax including State Homestead, State Tax on Non-Homestead, SPECIAL TAXES, TOTAL TAXES, PAID, WHEN PAID, Number of Receipt, March Settlement 1955, June Settlement 1955, Penalty, November Settlement 1955, Penalty, Collections to First Monday in January 1956, Delinquent on First Monday in January 1956, Total Delinquent Tax and Penalty, REMARKS.

Assessment Roll and Tax List of Real Property in the Town of Woodrow

\*Indicate Type of Property: R-Residential, C-Commercial, I-Industrial, U-Utility, F-Farm

Table with columns: IN WHOSE NAME ASSESSED, TO WHOM TRANSFERRED, DESCRIPTION OF PROPERTY, TRUTH AND FULL VALUATIONS (RURAL, ALL OTHER, MACHINERY), TOTAL ASSESSED VALUE, FINAL EQUALIZED VALUE.

Cass County, Minnesota, for Taxes for the Year 1954.

Table with columns: SOLD FOR TAXES, VALUATIONS BY SCHOOL DISTRICTS AS EQUALIZED BY DEPARTMENT OF TAXATION, Tax including State Homestead, SPECIAL TAXES, TOTAL TAXES, PAID, WHEN PAID, Number of Receipt, March Settlement 1955, June Settlement 1955, Penalty, November Settlement 1955, Collections to First Monday in January 1956, Delinquent on First Monday in January 1956, Total Delinquent Tax and Penalty, REMARKS.

Interlachen Lodge

Interlachen Lodge, Inc. 1st addn. Interlachen Lodge, Inc. 2nd addn. Interlachen Lodge, Inc. 3rd addn. Interlachen Lodge, Inc. 4th addn. Interlachen Lodge, Inc. 5th addn. Interlachen Lodge, Inc. 6th addn. Interlachen Lodge, Inc. 7th addn. Interlachen Lodge, Inc. 8th addn. Interlachen Lodge, Inc. 9th addn. Interlachen Lodge, Inc. 10th addn.

Cass County, Minnesota, for Taxes for the Year 1954.

Assessment Roll and Tax List of Real Property in the Town of Woodson

\*Indicate Type of Property: R-Residential, C-Commercial, I-Industrial, U-Utility, F-Farm

Table with columns: IN WHOSE NAME ASSESSED, TO WHOM TRANSFERRED, DESCRIPTION OF PROPERTY, ASSESSED VALUATIONS (RURAL, ALL OTHER, MACHINERY), TOTAL ASSESSED VALUE, FINAL EQUALIZED VALUE.

Table with columns: VALUATIONS BY SCHOOL DISTRICTS AS EQUALIZED BY DEPARTMENT OF TAXATION, Tax including State Homestead, SPECIAL TAXES, TOTAL TAXES, PAID, WHEN PAID, Number of Receipt, March Settlement 1955, June Settlement 1955, November Settlement 1955, Collections to First Monday in January 1956, Delinquent on First Monday in January 1956, Total Delinquent Tax and Penalty, REMARKS.

Interlachen Lodge

Interlachen Lodge, Inc. 1st addy. Interlachen Lodge, Inc. 1st addy. Interlachen Lodge, Inc. 1st addy. Interlachen Lodge, Inc. 1st addy.

Assessment Roll and Tax List of Real Property in the Town of Woodrow

Indicate Type of Property: R-Residential, C-Commercial, I-Industrial, U-Utility, F-Farm

Table with columns: IN WHOSE NAME ASSESSED, TO WHOM TRANSFERRED, SUBDIVISION, TRUE AND FULL VALUATIONS, ASSESSED VALUATIONS, FINAL EQUALIZED VALUE. Includes entries for Francis + Anna Le Clair, James Walker, Paul B. + Yvette Adams, etc.

Cass County, Minnesota, for Taxes for the Year 1954.

Table with columns: SOLD FOR TAXES, VALUATIONS BY SCHOOL DISTRICTS AS EQUALIZED BY DEPARTMENT OF TAXATION, SPECIAL TAXES, TOTAL TAXES, PAID, WHEN PAID, Number of Receipt, March Settlement 1955, June Settlement 1955, November Settlement 1955, Collection to First Monday in January 1956, Delinquent on First Monday in January 1956, Total Delinquent Tax and Penalty, REMARKS. Includes entries for 1 PAID IN FULL MAY 21 1955, 2 SOLD FOR TAXES, etc.

Assessment Roll and Tax List of Real Property in the Town of Woodrow

\*Indicate Type of Property: R-Residential, C-Commercial, I-Industrial, U-Utility, F-Farm

Form 50 (54) - WELLS-GARVEY COMPANY, MINNEAPOLIS

IN WHOSE NAME ASSESSED	TO WHOM TRANSFERRED	DESCRIPTION OF PROPERTY					TRUE AND FULL VALUATIONS							ASSESSED VALUATIONS					FINAL EQUALIZED VALUE
		SUBDIVISION	Sec of Lot	Town or Block	Rdg	Number of Acres of Land	LAND Exclusive of Structures and Improvements	BUILDINGS and Other Structures	MACHINERY Permanently Attached to Real Estate	TOTAL True and Full Value	RURAL		ALL OTHER		MACHINERY Permanently Attached to Real Estate	TOTAL ASSESSED VALUE	Total Assessed Value as Equalized by the Board of Review		
											Acres	100ths	Homestead Up to \$4,000 20%	Over \$4,000 and Non-Homestead 33 1/3%				Homestead Up to \$4,000 25%	
		<i>Interlachen Lodge</i>								Dollars	Dollars	Dollars	Dollars	Dollars	Dollars	Dollars			
<i>Kenneth D. Marsh</i>																			
<i>Louise P. Riche</i>	<i>State of Minnesota</i>																		
<i>Robert Heare</i>	<i>State of Minnesota</i>																		
<i>State of Minnesota</i>																			
<i>Sets 149 to 194 Vacated</i>																			
<i>Sets 105-148 incl. in Interlachen Lodge Inc.</i>																			
<i>Sets 245-287 incl. in Interlachen Lodge Inc.</i>																			

Cass County, Minnesota, for Taxes for the Year 1954.

SOLD FOR TAXES	VALUATIONS BY SCHOOL DISTRICTS AS EQUALIZED BY DEPARTMENT OF TAXATION						Tax including State Homestead Mills	State Tax on Non-Homestead 5.22 Mills	SPECIAL TAXES	TOTAL TAXES	PAID	WHEN PAID	Number of Receipt	March Settlement 1955	June Settlement 1955	Penalty	November Settlement 1955	Penalty	Collections to First Monday in January 1956	Penalty	Delinquent on First Monday in January 1956	Total Delinquent Tax and Penalty	REMARKS	
	District No.	District No.	District No.	District No.	District No.	District No.																		
	Rate	Rate	Rate	Rate	Rate	Rate																		
	Mills	Mills	Mills	Mills	Mills	Mills																		

Interlachen Lodge, Inc. 3rd Fl. S. State St. S. W. Minn. 55401



Assessment Roll and Tax List of Real Property in the Town of Woodrow

Cass County, Minnesota, for Taxes for the Year 1954.

\*Indicate Type of Property: R-Residential, C-Commercial, I-Industrial, U-Utility, F-Farm

Table with columns for property description, valuations (True and Full, Assessed), taxes (SOLD FOR TAXES, District, State, Special, Total), and payment status (PAID, WHEN PAID, Number of Receipt, etc.). Includes handwritten entries for 'Interlachen Lodge' and various owners like S.M. Muthew and Sidney + Neva James.

Vertical text on the right edge of the page, including 'Interlachen Lodge, Inc.' and 'Semi-Or-Sed Lodge'.

Assessment Roll and Tax List of Real Property in the Town of Woodrow

\*Indicate Type of Property: R-Residential, C-Commercial, I-Industrial, U-Utility, F-Farm

Table with columns: IN WHOSE NAME ASSESSED, TO WHOM TRANSFERRED, DESCRIPTION OF PROPERTY, TRUE AND FULL VALUATIONS, ASSESSED VALUATIONS, VALUATIONS BY SCHOOL DISTRICTS AS EQUALIZED BY DEPARTMENT OF TAXATION, TAXES, PAID, WHEN PAID, Number of Receipt, March Settlement 1955, June Settlement 1955, Penalty, November Settlement 1955, Collections to First Monday in January 1956, Delinquent on First Monday in January 1956, Total Delinquent Tax and Penalty, REMARKS.

Interlachen Lodge

W. B. & Joseph B. Rausch
229
230
231
232
233
234
235
236
237
238
239
240
241
242

State of Minnesota
243
244
Lots 245-287 Incl. in Interlachen Lodge Inc.

8633 1636

70 1596 40 1636 1636

Interlachen Lodge, Inc. 1st addn. Interlachen Lodge, Inc. Semi-Or-Sed Lodge 1st addn. O'The Trail 2nd addn.



Assessment Roll and Tax List of Real Property in the Town of Woodrow

\*Indicate Type of Property: R-Residential, C-Commercial, I-Industrial, U-Utility, F-Farm

IN WHOSE NAME ASSESSED	TO WHOM TRANSFERRED	DESCRIPTION OF PROPERTY				TRUE AND FULL VALUATIONS							ASSESSED VALUATIONS					FINAL EQUALIZED VALUE									
		Subdivision <i>(Lots 7 &amp; 8 Sec. 8-140-29)</i>	Sec. or Lot	Town or Block	Ring	Number of Acres of Land	No. School District	Indicate Home-Steud Tax or No	Indicate Agricul-tural Use or No	Indicate Type of Prop-erty	LAND Exclusive of Structures and Improvements	BUILDINGS and Other Structures	MACHINERY Permanently Attached to Real Estate	TOTAL True and Full Value	RURAL		ALL OTHER		MACHINERY Permanently Attached to Real Estate	TOTAL ASSESSED VALUE	Total Assessed Value as Equalized by the Board of Review	Dollars					
															Homestead	Over \$1,000 and Non-Homestead	Homestead						Over \$4,000 and Non-Homestead	Dollars	Dollars	Dollars	Dollars
															Up to \$1,000	33 1/8%	Up to \$1,000						40%	Dollars	Dollars	Dollars	Dollars
State of Minnesota			1	2		un																					
State of Minnesota			2																								
State of Minnesota			3																								
State of Minnesota			4																								
State of Minnesota	<i>Paul E. &amp; Joyce B. Noonan</i>		5																								
State of Minnesota	" "		6																								
State of Minnesota	" "		7																								
State of Minnesota			8																								
State of Minnesota	<i>Charles A. Nye</i>		9																								
State of Minnesota			10																								
State of Minnesota			11																								
State of Minnesota			12																								
State of Minnesota			13																								
State of Minnesota			14																								
State of Minnesota			15																								
State of Minnesota			16																								
State of Minnesota			17																								
State of Minnesota			18																								
State of Minnesota			19																								
State of Minnesota			20																								

Cass County, Minnesota, for Taxes for the Year 1954.

SOLD FOR TAXES	VALUATIONS BY SCHOOL DISTRICTS AS EQUALIZED BY DEPARTMENT OF TAXATION						Tax including State Homestead	State Tax on Non-Homestead	SPECIAL TAXES	TOTAL TAXES	PAID	WHEN PAID	Number of Receipt	March Settlement 1955	June Settlement 1955	Penalty	November Settlement 1955	Penalty	Collections to First Monday in January 1956	Penalty	Delinquent on First Monday in January 1956	Total Delinquent Tax and Penalty	REMARKS	
	District No.	District No.	District No.	District No.	District No.	District No.																		
	Rate	Rate	Rate	Rate	Rate	Rate	cts.	cts.	cts.	cts.	Month	Day	Year	cts.	cts.	cts.	cts.	cts.	cts.	cts.	cts.	cts.		

Interlachen Lodge, Inc. 3rd. Glen's Point cement. Interlachen Lodge, Inc. Semi-Or-Sed Lodge. 1st. Adm. Rd O'Neil Trail 2nd

Assessment Roll and Tax List of Real Property in the Town of Woodrow

\*Indicate Type of Property: R-Residential, C-Commercial, I-Industrial, U-Utility, F-Farm

Table with columns: IN WHOSE NAME ASSESSED, TO WHOM TRANSFERRED, SUBDIVISION, TRUE AND FULL VALUATIONS (LAND, BUILDINGS, MACHINERY, TOTAL), ASSESSED VALUATIONS (RURAL, ALL OTHER, MACHINERY, TOTAL ASSESSED), FINAL EQUALIZED VALUE.

Cass County, Minnesota, for Taxes for the Year 1954.

Table with columns: SOLD FOR TAXES, VALUATIONS BY SCHOOL DISTRICTS AS EQUALIZED BY DEPARTMENT OF TAXATION, Tax including State Homestead, State Tax on Non-Homestead, SPECIAL TAXES, TOTAL TAXES, PAID, WHEN PAID, Number of Receipt, March Settlement 1955, June Settlement 1955, Penalty, November Settlement 1955, Penalty, Collections to First Monday in January 1956, Penalty, Delinquent on First Monday in January 1956, Total Delinquent Tax and Penalty, REMARKS.

Interlachen Lodge, Inc.

Interlachen Lodge, Inc. 3rd Glen's Point, 1st add.

### Assessment Roll and Tax List of Real Property in the

*Town of Woodrow*,  
 \*Indicate Type of Property: *R-Residential, C-Commercial, I-Industrial, U-Utility, F-Farm*

Form 50 (54) MILLER-SAYRE COMPANY, MINNEAPOLIS

IN WHOSE NAME ASSESSED	TO WHOM TRANSFERRED	DESCRIPTION OF PROPERTY				No. School District	Indicate Homestead Yes or No	Indicate Agricultural Yes or No	Indicate Type of Property	TRUE AND FULL VALUATIONS						Total Assessed Value as Equalized by the Board of Review	FINAL EQUALIZED VALUE	
		SUBDIVISION	Sec. or Lot	Town or Block	Rng.					Number of Acres of Land Acres    100ths	RURAL		ALL OTHER		MACHINERY Permanently Attached to Real Estate 33 1/3%			TOTAL ASSESSED VALUE
											LAND Exclusive of Structures and Improvements	BUILDINGS and Other Structures	MACHINERY Permanently Attached to Real Estate	TOTAL True and Full Value				
<i>Interlachen Lodge, Inc.</i>																		
State of Minnesota		1				21				3								
State of Minnesota		2				22												
State of Minnesota		3				23												
State of Minnesota		4				24												
State of Minnesota		5				25												
State of Minnesota		6				26												
State of Minnesota		7				27												
State of Minnesota		8				28												
State of Minnesota		9				29												
State of Minnesota		10				30												
State of Minnesota		11				31												
State of Minnesota		12				32												
State of Minnesota		13				33												
State of Minnesota		14				34												
State of Minnesota		15				35												
State of Minnesota		16				36												
State of Minnesota		17				37												
State of Minnesota		18				38												

### Cass County, Minnesota, for Taxes for the Year 1954.

SOLD FOR TAXES	VALUATIONS BY SCHOOL DISTRICTS AS EQUALIZED BY DEPARTMENT OF TAXATION						Tax including State Homestead .....Mills	State Tax on Non-Homestead .....Mills	SPECIAL TAXES \$    cts.	TOTAL TAXES \$    cts.	PAID	WHEN PAID Month   Day   Year	Number of Receipt	March Settlement 1955 \$    cts.	June Settlement 1955 \$    cts.	Penalty \$    cts.	November Settlement 1955 \$    cts.	Penalty \$    cts.	Collections to First Monday in January 1956 \$    cts.	Penalty \$    cts.	Delinquent on First Monday in January 1956 \$    cts.	Total Delinquent Tax and Penalty \$    cts.	REMARKS
	District No. Rate	District No. Rate	District No. Rate	District No. Rate	District No. Rate	District No. Rate																	
	Dollars	Dollars	Dollars	Dollars	Dollars	Dollars																	

Interlachen Lodge, Inc. 3rd Glen's Point Me Interlachen Lodge, Inc. Semi-Or-Sed Lodge rd of The Trail 2nd Add.

Assessment Roll and Tax List of Real Property in the Town of Woodrow

\*Indicate Type of Property: R-Residential, C-Commercial, I-Industrial, U-Utility, F-Farm

Table with columns: IN WHOSE NAME ASSESSED, TO WHOM TRANSFERRED, SUBDIVISION, TRUE AND FULL VALUATIONS (LAND, BUILDINGS, MACHINERY, TOTAL), ASSESSED VALUATIONS (RURAL, ALL OTHER, MACHINERY, TOTAL ASSESSED), FINAL EQUALIZED VALUE.

Cass County, Minnesota, for Taxes for the Year 1954.

Table with columns: SOLD FOR TAXES, VALUATIONS BY SCHOOL DISTRICTS AS EQUALIZED BY DEPARTMENT OF TAXATION, Tax including State Homestead, State Tax on Non-Homestead, SPECIAL TAXES, TOTAL TAXES, PAID, WHEN PAID, Number of Receipt, March Settlement 1955, June Settlement 1955, Penalty, November Settlement 1955, Penalty, Collections to First Monday in January 1956, Penalty, Delinquent on First Monday in January 1956, Total Delinquent Tax and Penalty, REMARKS.

Interlachen Lodge, Inc. 3rd, 4th, 5th, 6th, 7th, 8th, 9th, 10th, 11th, 12th, 13th, 14th, 15th, 16th, 17th, 18th, 19th, 20th

Interlachen Lodge, Inc. 3rd, 4th, 5th, 6th, 7th, 8th, 9th, 10th, 11th, 12th, 13th, 14th, 15th, 16th, 17th, 18th, 19th, 20th

Assessment Roll and Tax List of Real Property in the Town of Woodrow

\*Indicate Type of Property: R-Residential, C-Commercial, I-Industrial, U-Utility, F-Farm

Table with columns: IN WHOSE NAME ASSESSED, TO WHOM TRANSFERRED, DESCRIPTION OF PROPERTY, TRUE AND FULL VALUATIONS (LAND, BUILDINGS, MACHINERY, TOTAL), ASSESSED VALUATIONS (RURAL, ALL OTHER, MACHINERY, TOTAL ASSESSED VALUE), and FINAL EQUALIZED VALUE.

Cass County, Minnesota, for Taxes for the Year 1954.

Table with columns: SOLD FOR TAXES, VALUATIONS BY SCHOOL DISTRICTS AS EQUALIZED BY DEPARTMENT OF TAXATION, Tax including State Homestead, State Tax on Non-Homestead, SPECIAL TAXES, TOTAL TAXES, PAID, WHEN PAID, Number of Receipt, March Settlement 1955, June Settlement 1955, November Settlement 1955, Penalty, Collections to First Monday in January 1956, Delinquent on First Monday in January 1956, Total Delinquent Tax and Penalty, REMARKS.

Interlachen Lodge, Inc.

Interlachen Lodge, Inc. 3rd Glen's Pointement, Interlachen Lodge, Inc. 1st add.



Assessment Roll and Tax List of Real Property in the Town of Woodrow

\*Indicate Type of Property: R-Residential, C-Commercial, I-Industrial, U-Utility, F-Farm

Table with columns: IN WHOSE NAME ASSESSED, TO WHOM TRANSFERRED, DESCRIPTION OF PROPERTY, TRUE AND FULL VALUATIONS (RURAL, ALL OTHER, MACHINERY), TOTAL ASSESSED VALUE, FINAL EQUALIZED VALUE.

Summary totals for columns 13, 14, 15, 16, 17, 18, 19, 20.

Cass County, Minnesota, for Taxes for the Year 1954.

Table with columns: VALUATIONS BY SCHOOL DISTRICTS AS EQUALIZED BY DEPARTMENT OF TAXATION, TAX INCLUDING STATE HOMESTEAD, SPECIAL TAXES, TOTAL TAXES, PAID, WHEN PAID, Number of Receipt, March Settlement 1955, June Settlement 1955, Penalty, November Settlement 1955, Collections to First Monday in January 1956, Delinquent on First Monday in January 1956, Total Delinquent Tax and Penalty, REMARKS.

Summary totals for columns 21, 22, 23, 24, 25, 26, 27, 28, 29, 30.

Assessment Roll and Tax List of Real Property in the Town of Woodrow, Minnesota

Interlachen Lodge, Inc.

Table with columns for IN WHOSE NAME ASSESSED, TO WHOM TRANSFERRED, DESCRIPTION OF PROPERTY, TRUE AND FULL VALUATIONS, ASSESSED VALUATIONS, VALUATIONS BY SCHOOL DISTRICTS AS EQUALIZED BY DEPARTMENT OF TAXATION, TAX INCLUDING STATE HOMESTEAD, STATE TAX ON NON-HOMESTEAD, SPECIAL TAXES, TOTAL TAXES, PAID, WHEN PAID, Number of Receipt, March Settlement 1955, June Settlement 1955, Penalty, November Settlement 1955, Penalty, Collections to First Monday in January 1956, Penalty, Delinquent on First Monday in January 1956, Total Delinquent Tax and Penalty, REMARKS.

Interlachen Lodge, Inc. 300 Glen's Pointe Dr. Interlachen Lodge, Inc. 1500 1st. Adm. Semi-Or-Ser Lodge and O'Neil Trail 2nd Adm.



Assessment Roll and Tax List of Real Property in the Town of Woodrow

\* Indicate Type of Property: R-Residential, C-Commercial, I-Industrial, U-Utility, F-Farm

Interlachen Lodge, Inc.

IN WHOSE NAME ASSESSED	TO WHOM TRANSFERRED	DESCRIPTION OF PROPERTY				No. School District	Indicate Homestead Yes or No	Indicate Agricultural Yes or No	* Indicate Type of Property	TRUE AND FULL VALUATIONS				ASSESSED VALUATIONS					FINAL EQUALIZED VALUE			
		SUBDIVISION	Sec. or Lot	Town or Block	Rng					Number of Acres of Land	LAND Exclusive of Structures and Improvements	BUILDINGS and Other Structures	MACHINERY Permanently Attached to Real Estate	TOTAL True and Full Value	RURAL		ALL OTHER			MACHINERY Permanently Attached to Real Estate	TOTAL ASSESSED VALUE	Total Assessed Value as Equalized by the Board of Review
															Acres	100ths	Homestead Up to \$4,000 20%	Over \$4,000 and Non-Homestead 33 1/3%				
State of Minnesota		Interlachen Lodge, Inc.	1	10	7																	
State of Minnesota			2	11																		
State of Minnesota			3	12																		
State of Minnesota			4	13																		
State of Minnesota			5	14																		
State of Minnesota			6	15																		
State of Minnesota			7	16																		
State of Minnesota			8	17																		
State of Minnesota			9	18																		
State of Minnesota			10	19																		
State of Minnesota			11	20																		
State of Minnesota			12	21																		
State of Minnesota			13	22																		
State of Minnesota			14	23																		
State of Minnesota			15	24																		
State of Minnesota			16	25																		
State of Minnesota			17	26																		
State of Minnesota			18	27																		
State of Minnesota			19	28																		
State of Minnesota			20	29																		

Cass County, Minnesota, for Taxes for the Year 1954.

SOLD FOR TAXES	VALUATIONS BY SCHOOL DISTRICTS AS EQUALIZED BY DEPARTMENT OF TAXATION						Tax including State Homestead	State Tax on Non-Homestead	SPECIAL TAXES	TOTAL TAXES	PAID	WHEN PAID	Number of Receipt	March Settlement 1955	June Settlement 1955	Penalty	November Settlement 1955	Penalty	Collections to First Monday in January 1956	Penalty	Delinquent on First Monday in January 1956	Total Delinquent Tax and Penalty	REMARKS						
	District No.	District No.	District No.	District No.	District No.	District No.																		Rate	Rate	Rate	Rate	Rate	Rate
	Mills	Mills	Mills	Mills	Mills	Mills																		\$ cts.	\$ cts.	\$ cts.	\$ cts.	\$ cts.	\$ cts.

Interlachen Lodge, Inc. 3rd Floor, 1st addn.

Assessment Roll and Tax List of Real Property in the Town of Woodrow, \*Indicate Type of Property: R-Residential, C-Commercial, I-Industrial, U-Utility, F-Farm

Interlachen Lodge, Inc.

Table with columns: IN WHOSE NAME ASSESSED, TO WHOM TRANSFERRED, DESCRIPTION OF PROPERTY, TRUE AND FULL VALUATIONS, ASSESSED VALUATIONS, VALUATIONS BY SCHOOL DISTRICTS AS EQUALIZED BY DEPARTMENT OF TAXATION, SOLD FOR TAXES, PAID, WHEN PAID, Number of Receipt, March Settlement 1955, June Settlement 1955, Penalty, November Settlement 1955, Penalty, Collections to First Monday in January 1956, Penalty, Delinquent on First Monday in January 1956, Total Delinquent Tax and Penalty, REMARKS.

Interlachen Lodge, Inc. 3rd Floor, 1st adn.

Assessment Roll and Tax List of Real Property in the Town of Woodrow, Minnesota

Form 50 (54) - MINN. STATE COMPANY, MINNEAPOLIS

\*Indicate Type of Property: R-Residential, C-Commercial, I-Industrial, U-Utility, F-Farm

Table with columns: IN WHOSE NAME ASSESSED, TO WHOM TRANSFERRED, DESCRIPTION OF PROPERTY, TRUE AND FULL VALUATIONS, ASSESSED VALUATIONS, and FINAL EQUALIZED VALUE. Includes entries for State of Minnesota and individuals like Karl J. Miller and Edwin M. Adams.

Cass County, Minnesota, for Taxes for the Year 1954.

Table with columns: VALUATIONS BY SCHOOL DISTRICTS AS EQUALIZED BY DEPARTMENT OF TAXATION, TAX including State Homestead, State Tax on Non-Homestead, SPECIAL TAXES, TOTAL TAXES, PAID, WHEN PAID, Number of Receipt, March Settlement 1955, June Settlement 1955, November Settlement 1955, Penalty, Collections to First Monday in January 1956, Delinquent on First Monday in January 1956, Total Delinquent Tax and Penalty, and REMARKS. Includes handwritten entries for 'SOLD FOR TAXES' and tax amounts like 114 02 and 348.

Interlachen Lodge, Inc.

Interlachen Lodge, Inc. 3rd Floor, 1st addn.

Assessment Roll and Tax List of Real Property in the Town of Woodrow,  
 \*Indicate Type of Property: R-Residential, C-Commercial, I-Industrial, U-Utility, F-Farm

Form 50 (54) WILCO-SAYRE COMPANY, MINNEAPOLIS

IN WHOSE NAME ASSESSED	TO WHOM TRANSFERRED	DESCRIPTION OF PROPERTY				No. School District	Indicate Homestead Yes or No	Indicate Agricultural Yes or No	Indicate Type of Property	TRUE AND FULL VALUATIONS				ASSESSED VALUATIONS					FINAL EQUALIZED VALUE			
		SUBDIVISION	Sec. or Lot	Town or Block	Rng					Number of Acres of Land	LAND Excludes of Structures and Improvements	BUILDINGS and Other Structures	MACHINERY Permanently Attached to Real Estate	TOTAL True and Full Value	RURAL		ALL OTHER			MACHINERY Permanently Attached to Real Estate	TOTAL ASSESSED VALUE	Total Assessed Value as Equalized by the Board of Review
															Acres	100ths	Homestead Up to \$4,000 20%	Over \$4,000 and Non-Homestead 33 1/3%				
State of Minnesota		Interlachen Lodge Inc.	21	9																		
State of Minnesota			22																			
State of Minnesota			23																			
State of Minnesota			24																			
State of Minnesota			25																			
State of Minnesota			26																			
State of Minnesota			27																			
State of Minnesota			28																			
State of Minnesota			29																			
State of Minnesota			30																			
Interlachen Lodge Inc.			31				No	40	L		15		15		5		5					
State of Minnesota			32																			
State of Minnesota			33																			
State of Minnesota			34																			
Interlachen Lodge Inc.			35				"	"	L		15		15		5		5					
State of Minnesota			36																			
State of Minnesota			37																			
State of Minnesota			38																			
State of Minnesota			39																			
State of Minnesota			40																			
											30		30		10		10					

Cass County, Minnesota, for Taxes for the Year 1954.

SOLD FOR TAXES	VALUATIONS BY SCHOOL DISTRICTS AS EQUALIZED BY DEPARTMENT OF TAXATION						Tax including State Homestead	State Tax on Non-Homestead	SPECIAL TAXES	TOTAL TAXES	PAID	WHEN PAID	Number of Receipt	March Settlement 1955	June Settlement 1955	Penalty	November Settlement 1955	Penalty	Collections to First Monday in January 1956	Penalty	Delinquent on First Monday in January 1956	Total Delinquent Tax and Penalty	REMARKS													
	District No.	District No.	District No.	District No.	District No.	District No.																		Rate	Rate	Rate	Rate	Rate	Rate	Rate	Rate	Rate	Rate	Rate	Rate	Rate
	Mills	Mills	Mills	Mills	Mills	Mills																		Mills	Mills	Mills	Mills	Mills	Mills	Mills	Mills	Mills	Mills	Mills	Mills	Mills
SOLD FOR TAXES										5													114													
SOLD FOR TAXES										5													114													
										10													228													

Interlachen Lodge, Inc. 3rd Glen's Point The Interlachen Lodge, Inc. 1st addn.

Assessment Roll and Tax List of Real Property in the Town of Woodrow

\* Indicate Type of Property: R-Residential, C-Commercial, I-Industrial, U-Utility, F-Farm

Form 50 (54) WILSON-DAY COMPANY, MINNEAPOLIS

IN WHOSE NAME ASSESSED	TO WHOM TRANSFERRED	DESCRIPTION OF PROPERTY				No. School District	Indicate Homestead Yes or No	Indicate Agricultural Yes or No	* Indicate Type of Property	TRUE AND FULL VALUATIONS						Total Assessed Value as Equalized by the Board of Review	FINAL EQUALIZED VALUE				
		SUBDIVISION	Sec. or Lot	Town or Block	Rng					Number of Acres of Land Acres 100ths	LAND Exclusive of Structures and Improvements	BUILDINGS and Other Structures	MACHINERY Permanently Attached to Real Estate	RURAL				ALL OTHER		MACHINERY Permanently Attached to Real Estate	TOTAL ASSESSED VALUE
														Homestead Up to \$1,000 20%	Over \$4,000 and Non-Homestead 33 1/3%			Homestead Up to \$1,000 25%	Over \$4,000 and Non-Homestead 40%		
		<u>Interlachen Lodge, Inc.</u>																			
State of Minnesota			41	9																	
C. J. White			42							15				15							
State of Minnesota			43																		
State of Minnesota			44																		
State of Minnesota			45																		
State of Minnesota			46																		
State of Minnesota			47																		
Matilda E. Rice			48							15				15		5					
"			49							15				15		5					
Isa L. E. Coffin			50							15				15		5					
State of Minnesota			51																		
State of Minnesota			52																		
State of Minnesota			53																		
State of Minnesota			54																		
State of Minnesota			55																		
State of Minnesota			56																		
State of Minnesota			57																		
										60				60		20					
																20					

Cass County, Minnesota, for Taxes for the Year 1954.

SOLID FOR TAXES	VALUATIONS BY SCHOOL DISTRICTS AS EQUALIZED BY DEPARTMENT OF TAXATION						Tax including State Homestead	State Tax on Non-Homestead	SPECIAL TAXES	TOTAL TAXES	PAID	WHEN PAID Month Day Year	Number of Receipt	March Settlement 1955	June Settlement 1955	Penalty	November Settlement 1955	Penalty	Collections to First Monday in January 1956	Penalty	Delinquent on First Monday in January 1956	Total Delinquent Tax and Penalty	REMARKS
	District No.	District No.	District No.	District No.	District No.	District No.																	
	Rate	Rate	Rate	Rate	Rate	Rate																	
1																							
2 SOLD FOR TAXES							114	02		116													116
3																							
4																							
5																							
6																							
7																							
8 SOLD FOR TAXES							114	02		116													116
9 SOLD FOR TAXES							114	04		118													118
10 SOLD FOR TAXES							114	02		116													116
11																							
12																							
13																							
14																							
15																							
16																							
17																							
18																							
19																							
20																							
										456													466
										20													20

Interlachen Lodge, Inc.

Interlachen Lodge, Inc.

Assessment Roll and Tax List of Real Property in the Town of Woodrow

Cass County, Minnesota, for Taxes for the Year 1954.

Interlachen Lodge, Inc.

Table with columns: IN WHOSE NAME ASSESSED, TO WHOM TRANSFERRED, SUBDIVISION, TRUE AND FULL VALUATIONS, ASSESSED VALUATIONS, FINAL EQUALIZED VALUE. Includes entries for State of Minnesota and R. P. Marx.

Table with columns: VALUATIONS BY SCHOOL DISTRICTS AS EQUALIZED BY DEPARTMENT OF TAXATION, TAX including State Homestead, SPECIAL TAXES, TOTAL TAXES, PAID, WHEN PAID, Number of Receipt, March Settlement 1955, June Settlement 1955, November Settlement 1955, Collections to First Monday in January 1956, Delinquent on First Monday in January 1956, Total Delinquent Tax and Penalty, REMARKS. Includes handwritten notes like 'PAID IN FULL' and dates.

Interlachen Lodge, Inc. 3rd Floor, 1st addn. Interlachen Lodge, Inc. 1st addn. Interlachen Lodge, Inc. 1st addn.



Assessment Roll and Tax List of Real Property in the Town of Woodrow

\*Indicate Type of Property: R-Residential, C-Commercial, I-Industrial, U-Utility, F-Farm

Form 5C (54) WILSON-DAVIS COMPANY, MINNEAPOLIS

Table with columns: IN WHOSE NAME ASSESSED, TO WHOM TRANSFERRED, DESCRIPTION OF PROPERTY, TRUE AND FULL VALUATIONS, ASSESSED VALUATIONS, FINAL EQUALIZED VALUE.

Cass County, Minnesota, for Taxes for the Year 1954.

Table with columns: VALUATIONS BY SCHOOL DISTRICTS AS EQUALIZED BY DEPARTMENT OF TAXATION, TAXES, PAID, WHEN PAID, Number of Receipt, March Settlement 1955, June Settlement 1955, November Settlement 1955, Collections to First Monday in January 1956, Delinquent on First Monday in January 1956, Total Delinquent Tax and Penalty, REMARKS.

Interlachen Lodge, Inc.

Vertical text on the right edge of the page, including 'Interlachen Lodge, Inc.' and other details.



Assessment Roll and Tax List of Real Property in the Town of Woodrow

\*Indicate Type of Property: R-Residential, C-Commercial, I-Industrial, U-Utility, F-Farm

Form 50 (54) MINN.-STATE COMPT. MINNAPOLIS

Table with columns: IN WHOSE NAME ASSESSED, TO WHOM TRANSFERRED, DESCRIPTION OF PROPERTY, TRUE AND FULL VALUATIONS, ASSESSED VALUATIONS, FINAL EQUALIZED VALUE. Includes entries for Theodore J. & Juanita N. Yagrow + Eunice H. Nagel and State of Minnesota.

Cass County, Minnesota, for Taxes for the Year 1954.

Table with columns: VALUATIONS BY SCHOOL DISTRICTS AS EQUALIZED BY DEPARTMENT OF TAXATION, TAX INCLUDING STATE HOMESTEAD, SPECIAL TAXES, TOTAL TAXES, PAID, WHEN PAID, Number of Receipt, March Settlement 1955, June Settlement 1955, Penalty, November Settlement 1955, Penalty, Collections to First Monday in January 1956, Penalty, Delinquent on First Monday in January 1956, Total Delinquent Tax and Penalty, REMARKS. Includes handwritten entries for 'PAID IN FULL MAY 31 1955' and tax amounts.

Interlachen Lodge, Inc. Interlachen Lodge, Inc. 1st Addn.

Interlachen Lodge, Inc. Interlachen Lodge, Inc. 1st Addn.

Cass County, Minnesota, for Taxes for the Year 1954.

Assessment Roll and Tax List of Real Property in the Town of Woodrow

\*Indicate Type of Property: R-Residential, C-Commercial, I-Industrial, U-Utility, F-Farm

IN WHOSE NAME ASSESSED	TO WHOM TRANSFERRED	DESCRIPTION OF PROPERTY				No. School District	Indicate Homestead Yes or No	Indicate Agricultural Yes or No	Indicate Type of Property	TRUE AND FULL VALUATIONS					ASSESSED VALUATIONS					FINAL EQUALIZED VALUE		
		SUBDIVISION	Sec. of Lot	Town or Block	Rng					Number of Acres of Land	LAND Exclusive of Structures and Improvements	BUILDINGS and Other Structures	MACHINERY Permanently Attached to Real Estate	TOTAL True and Full Value	RURAL		ALL OTHER		MACHINERY Permanently Attached to Real Estate		TOTAL ASSESSED VALUE	Total Assessed Value as Equalized by the Board of Review
															Acres	100ths	Homestead Up to \$4,000 20%	Over \$4,000 and Non-Homestead 33 1/3 %				
	Interlachen Lodge, Inc. 1st Addn.																					
State of Minnesota																						
State of Minnesota																						
State of Minnesota																						
State of Minnesota																						
State of Minnesota																						
State of Minnesota																						
State of Minnesota																						
State of Minnesota																						
State of Minnesota																						
State of Minnesota																						
State of Minnesota																						
State of Minnesota																						
State of Minnesota																						

Interlachen Lodge, Inc. 1st Addn.

SOLD FOR TAXES	VALUATIONS BY SCHOOL DISTRICTS AS EQUALIZED BY DEPARTMENT OF TAXATION						Tax including State Homestead	State Tax on Non-Homestead	SPECIAL TAXES	TOTAL TAXES	PAID	WHEN PAID	Number of Receipt	March Settlement 1955	June Settlement 1955	Penalty	November Settlement 1955	Penalty	Collections to First Monday in January 1956	Penalty	Delinquent on First Monday in January 1956	Total Delinquent Tax and Penalty	REMARKS															
	District No.	District No.	District No.	District No.	District No.	District No.																		Rate	Rate	Rate	Rate	Rate	Rate	Rate	Rate	Rate	Rate	Rate	Rate	Rate	Rate	Rate
	Mills	Mills	Mills	Mills	Mills	Mills																		\$ cts.	\$ cts.	\$ cts.	\$ cts.	\$ cts.	\$ cts.	\$ cts.	\$ cts.	\$ cts.	\$ cts.	\$ cts.	\$ cts.	\$ cts.	\$ cts.	\$ cts.

Interlachen Lodge, Inc. 1st Addn.



Assessment Roll and Tax List of Real Property in the Town of Woodrow

\*Indicate Type of Property: R-Residential, C-Commercial, I-Industrial, U-Utility, F-Farm

Table with columns: IN WHOSE NAME ASSESSED, TO WHOM TRANSFERRED, DESCRIPTION OF PROPERTY, TRUE AND FULL VALUATIONS, ASSESSED VALUATIONS, VALUATIONS BY SCHOOL DISTRICTS AS EQUALIZED BY DEPARTMENT OF TAXATION, TAXES, PAID, WHEN PAID, Number of Receipt, March Settlement 1955, June Settlement 1955, Penalty, November Settlement 1955, Penalty, Collections to First Monday in January 1956, Penalty, Delinquent on First Monday in January 1956, Total Delinquent Tax and Penalty, REMARKS.

Interlachen Lodge, Inc. 1st Addn.

Interlachen Lodge, Inc. 1st Addn. 2nd Addn. 3rd Addn. 4th Addn. 5th Addn. 6th Addn. 7th Addn. 8th Addn. 9th Addn. 10th Addn. 11th Addn. 12th Addn. 13th Addn. 14th Addn. 15th Addn. 16th Addn. 17th Addn. 18th Addn. 19th Addn. 20th Addn.

Assessment Roll and Tax List of Real Property in the Town of Woodrow

\*Indicate Type of Property: R-Residential, C-Commercial, I-Industrial, U-Utility, F-Farm

Table with columns: IN WHOSE NAME ASSESSED, TO WHOM TRANSFERRED, SUBDIVISION, Sec. of Lot, Town or Block, Ring, Number of Acres of Land, TRUE AND FULL VALUATIONS (LAND, BUILDINGS, MACHINERY, TOTAL), ASSESSED VALUATIONS (RURAL, ALL OTHER, MACHINERY, TOTAL ASSESSED VALUE), Total Assessed Value, FINAL EQUALIZED VALUE.

Cass County, Minnesota, for Taxes for the Year 1954.

Table with columns: SOLD FOR TAXES, VALUATIONS BY SCHOOL DISTRICTS AS EQUALIZED BY DEPARTMENT OF TAXATION, Tax including State Homestead, State Tax on Non-Homestead, SPECIAL TAXES, TOTAL TAXES, PAID, WHEN PAID, Number of Receipt, March Settlement 1955, June Settlement 1955, Penalty, November Settlement 1955, Penalty, Collections to First Monday in January 1956, Penalty, Delinquent on First Monday in January 1956, Total Delinquent Tax and Penalty, REMARKS.

Assessment Roll and Tax List of Real Property in the Town of Woodlawn

\*Indicate Type of Property: R-Residential, C-Commercial, I-Industrial, U-Utility, F-Farm

Form 5C (54) MILLER-GAYNE COMPANY, MINNEAPOLIS

Table with columns: IN WHOSE NAME ASSESSED, TO WHOM TRANSFERRED, SUBDIVISION, TRUE AND FULL VALUATIONS, ASSESSED VALUATIONS, and FINAL EQUALIZED VALUE.

Cass County, Minnesota, for Taxes for the Year 1954.

Table with columns: VALUATIONS BY SCHOOL DISTRICTS AS EQUALIZED BY DEPARTMENT OF TAXATION, TAXES, PAID, WHEN PAID, and REMARKS.

Vertical text on the left edge of the page: Interlachen Lodge, Inc. 1st Adm.

Vertical text on the right edge of the page: Interlachen Lodge, Inc. 1st Adm.



Assessment Roll and Tax List of Real Property in the Town of Woodrow

\*Indicate Type of Property: R-Residential, C-Commercial, I-Industrial, U-Utility, F-Farm

Form 50 (54) HILLS-BAY COMPANY, MINNEAPOLIS

Table with columns: IN WHOSE NAME ASSESSED, TO WHOM TRANSFERRED, SUBDIVISION, Description of Property (Sec. or Lot, Town or Block, Rng, Number of Acres of Land), TRUE AND FULL VALUATIONS (LAND, BUILDINGS, MACHINERY, TOTAL), ASSESSED VALUATIONS (RURAL, ALL OTHER, MACHINERY, TOTAL ASSESSED VALUE), Total Assessed Value as Equalized by the Board of Review, FINAL EQUALIZED VALUE.

Cass County, Minnesota, for Taxes for the Year 1954.

Table with columns: SOLD FOR TAXES, VALUATIONS BY SCHOOL DISTRICTS AS EQUALIZED BY DEPARTMENT OF TAXATION (District No., Rate, Mills), Tax including State Homestead, State Tax on Non-Homestead, SPECIAL TAXES, TOTAL TAXES, PAID, WHEN PAID (Month, Day, Year), Number of Receipt, March Settlement 1955, June Settlement 1955, Penalty, November Settlement 1955, Penalty, Collections to First Monday in January 1956, Delinquent on First Monday in January 1956, Total Delinquent Tax and Penalty, REMARKS.

Interlachen Lodge, Inc. 1st Adm.

Interlachen Lodge, Inc. 1st Adm. 2nd Adm.



Assessment Roll and Tax List of Real Property in the Town of Woodlow,

\*Indicate Type of Property: R-Residential, C-Commercial, I-Industrial, U-Utility, F-Farm

Cass County, Minnesota, for Taxes for the Year 1954.

Form 5C (54) MILLER-BAYNE COMPANY, MINNEAPOLIS

IN WHOSE NAME ASSESSED	TO WHOM TRANSFERRED	DESCRIPTION OF PROPERTY				No. School District	Indicate Homestead Yes or No	Indicate Agricultural Yes or No	Indicate Type of Property	TRUE AND FULL VALUATIONS				ASSESSED VALUATIONS					FINAL EQUALIZED VALUE						
		SUBDIVISION	Sec. or Lot	Town or Block	Rng					Number of Acres of Land	LAND Exclusive of Structures and Improvements	BUILDINGS and Other Structures	MACHINERY Permanently Attached to Real Estate	TOTAL True and Full Value	RURAL		ALL OTHER			MACHINERY Permanently Attached to Real Estate	TOTAL ASSESSED VALUE	Total Assessed Value as Equalized by the Board of Review			
															Acres	100ths	Homestead Up to \$1,000 20%	Over \$1,000 and Non-Homestead 33 1/3%					Homestead Up to \$1,000 25%	Over \$1,000 and Non-Homestead 40%	33 1/3%
State of Minnesota	Interlachen Lodge, Inc. 1st Addn.		12	13																					
State of Minnesota			13																						
State of Minnesota			14																						
State of Minnesota			15																						
State of Minnesota			16																						
State of Minnesota			17																						
State of Minnesota			18																						
State of Minnesota			1 14																						
State of Minnesota			2																						
State of Minnesota			3																						
State of Minnesota			4																						
State of Minnesota			5																						
State of Minnesota			6																						
State of Minnesota			7																						
State of Minnesota			8																						
State of Minnesota			9																						
State of Minnesota			10																						
State of Minnesota			11																						
State of Minnesota			12																						
State of Minnesota			13																						
State of Minnesota			14																						
State of Minnesota			15																						
State of Minnesota			16																						
State of Minnesota			17																						
State of Minnesota			18																						
State of Minnesota			19																						
State of Minnesota			20																						

SOLD FOR TAXES	VALIDATIONS BY SCHOOL DISTRICTS AS EQUALIZED BY DEPARTMENT OF TAXATION						Tax including State Homestead	State Tax on Non-Homestead	SPECIAL TAXES	TOTAL TAXES	PAID	WHEN PAID	Number of Receipt	March Settlement 1955	June Settlement 1955	Penalty	November Settlement 1955	Penalty	Collections to First Monday in January 1956	Penalty	Delinquent on First Monday in January 1956	Total Delinquent Tax and Penalty	REMARKS															
	District No.	District No.	District No.	District No.	District No.	District No.																		Rate	Rate	Rate	Rate	Rate	Rate	Rate	Rate	Rate	Rate	Rate	Rate	Rate	Rate	Rate
	No.	No.	No.	No.	No.	No.																		Mills	Mills	Mills	Mills	Mills	Mills	Mills	Mills	Mills	Mills	Mills	Mills	Mills	Mills	Mills

Interlachen Lodge, Inc. 1st Addn.

Interlachen Lodge, Inc. 1st Addn.

Assessment Roll and Tax List of Real Property in the Town of Woodrow,

\*Indicate Type of Property: R-Residential, C-Commercial, I-Industrial, U-Utility, F-Farm

Form 5C (54) MILLER-BAYNE COMPANY, MINNEAPOLIS

IN WHOSE NAME ASSESSED	TO WHOM TRANSFERRED	DESCRIPTION OF PROPERTY				TRUE AND FULL VALUATIONS										FINAL EQUALIZED VALUE	
		SUBDIVISION	Sec. of Lot	Town or Block	Number of Acres of Land Acres 100ths	LAND Exclusive of Structures and Improvements	BUILDINGS and Other Structures	MACHINERY Permanently Attached to Real Estate	TOTAL True and Full Value	RURAL		ALL OTHER		MACHINERY Permanently Attached to Real Estate	TOTAL ASSESSED VALUE		Total Assessed Value as Equalized by the Board of Review
										Homestead Up to \$1,000 20%	Over \$1,000 and Non-Homestead 33 1/3%	Homestead Up to \$1,000 25%	Over \$1,000 and Non-Homestead 40%				
State of Minnesota	<u>Interlachen Lodge, Inc. 1st Addn.</u>		14	14													
State of Minnesota			15														
State of Minnesota			16														
State of Minnesota			17														
State of Minnesota			18														
State of Minnesota			1	15													
State of Minnesota			2														
State of Minnesota			3														
State of Minnesota			4														
State of Minnesota			5														
State of Minnesota			6														
State of Minnesota			7														
State of Minnesota			8														
State of Minnesota			9														
State of Minnesota			10														
State of Minnesota			11														
State of Minnesota			12														
State of Minnesota			13														
State of Minnesota			14														
State of Minnesota			15														
State of Minnesota			16														
State of Minnesota			17														
State of Minnesota			18														
State of Minnesota			1	16													
State of Minnesota			2														
State of Minnesota			3														

Cass County, Minnesota, for Taxes for the Year 1954.

SOLD FOR TAXES	VALUATIONS BY SCHOOL DISTRICTS AS EQUALIZED BY DEPARTMENT OF TAXATION						Tax including State Homestead	State Tax on Non-Homestead	SPECIAL TAXES	TOTAL TAXES	PAID	WHEN PAID	Number of Receipt	March Settlement 1955	June Settlement 1955	Penalty	November Settlement 1955	Penalty	Collections to First Monday in January 1956	Penalty	Delinquent on First Monday in January 1956	Total Delinquent Tax and Penalty	REMARKS
	District No. Rate	District No. Rate	District No. Rate	District No. Rate	District No. Rate	District No. Rate																	
	Mills	Mills	Mills	Mills	Mills	Mills																	
	Dollars	Dollars	Dollars	Dollars	Dollars	Dollars																	
1																							
2																							
3																							
4																							
5																							
6																							
7																							
8																							
9																							
10																							
11																							
12																							
13																							
14																							
15																							
16																							
17																							
18																							
19																							
20																							

Interlachen Lodge, Inc. 1st Addn.

Interlachen Lodge, Inc. 1st Addn.

Assessment Roll and Tax List of Real Property in the Town of Woodrow  
\*Indicate Type of Property: R-Residential, C-Commercial, I-Industrial, U-Utility, F-Farm

Cass County, Minnesota, for Taxes for the Year 1954.

Table with columns: IN WHOSE NAME ASSESSED, TO WHOM TRANSFERRED, DESCRIPTION OF PROPERTY, TRUE AND FULL VALUATIONS, ASSESSED VALUATIONS, FINAL EQUALIZED VALUE, SOLD FOR TAXES, VALUATIONS BY SCHOOL DISTRICTS AS EQUALIZED BY DEPARTMENT OF TAXATION, TAX including State Homestead, State Tax on Non-Homestead, SPECIAL TAXES, TOTAL TAXES, PAID, WHEN PAID, Number of Receipt, March Settlement 1955, June Settlement 1955, Penalty, November Settlement 1955, Penalty, Collections to First Monday in January 1956, Penalty, Delinquent on First Monday in January 1956, Total Delinquent Tax and Penalty, REMARKS.

Interlachen Lodge, Inc. 1st Addn.

Interlachen Lodge, Inc. 3rd Addn. Meeting of the Board of Directors of the Interlachen Lodge, Inc. to be held at the 3rd Floor of the Hotel Woodrow in Woodrow, Minnesota on Monday, June 25, 1955.

Assessment Roll and Tax List of Real Property in the Town of Woodrow

Form 50 (54) WILSON-JAY COMPANY, WASHINGTON

\*Indicate Type of Property: R-Residential, C-Commercial, I-Industrial, U-Utility, F-Farm

Table with columns: IN WHOSE NAME ASSESSED, TO WHOM TRANSFERRED, DESCRIPTION OF PROPERTY, TRUE AND FULL VALUATIONS, ASSESSED VALUATIONS, VALUATIONS BY SCHOOL DISTRICTS AS EQUALIZED BY DEPARTMENT OF TAXATION, TAXES, PAID, WHEN PAID, Number of Receipt, March Settlement 1955, June Settlement 1955, Penalty, November Settlement 1955, Penalty, Collections to First Monday in January 1956, Penalty, Delinquent on First Monday in January 1956, Total Delinquent Tax and Penalty, REMARKS.

Interlachen Lodge, Inc. 1st Adm.

Interlachen Lodge, Inc. 1st Adm.

Interlachen Lodge, Inc. 1st Adm.

Assessment Roll and Tax List of Real Property in the Town of Wadena

\*Indicate Type of Property: R-Residential, C-Commercial, I-Industrial, U-Utility, F-Farm

Table with columns for: IN WHOSE NAME ASSESSED, TO WHOM TRANSFERRED, DESCRIPTION OF PROPERTY, TRUE AND FULL VALUATIONS (LAND, BUILDINGS, MACHINERY, TOTAL), ASSESSED VALUATIONS (RURAL, ALL OTHER, MACHINERY, TOTAL ASSESSED), FINAL EQUALIZED VALUE, SOLD FOR TAXES, VALUATIONS BY SCHOOL DISTRICTS AS EQUALIZED BY DEPARTMENT OF TAXATION, Tax including State Homestead, State Tax on Non-Homestead, SPECIAL TAXES, TOTAL TAXES, PAID, WHEN PAID, Number of Receipt, March Settlement 1955, June Settlement 1955, Penalty, November Settlement 1955, Penalty, Collections to First Monday in January 1956, Delinquent on First Monday in January 1956, Total Delinquent Tax and Penalty, REMARKS.

Interlachen Lodge, Inc. 1st Addn.

Interlachen Lodge, Inc. 1st Addn.

Interlachen Lodge, Inc. 1st Addn.

Assessment Roll and Tax List of Real Property in the Town of Woodrow

\*Indicate Type of Property: R-Residential, C-Commercial, I-Industrial, U-Utility, F-Farm

Form 5C (54) WILLY-DAY COMPANY, MINNEAPOLIS	IN WHOSE NAME ASSESSED	TO WHOM TRANSFERRED	DESCRIPTION OF PROPERTY					No. School District		TRUE AND FULL VALUATIONS															SOLD FOR TAXES	VALUATIONS BY SCHOOL DISTRICTS AS EQUALIZED BY DEPARTMENT OF TAXATION						Tax including State Homestead	State Tax on Non-Homestead	SPECIAL TAXES	TOTAL TAXES	PAID	WHEN PAID	Number of Receipt	March Settlement 1955	June Settlement 1955	Penalty	November Settlement 1955	Penalty	Collections to First Monday in January 1956	Penalty	Delinquent on First Monday in January 1956	Total Delinquent Tax and Penalty	REMARKS
			SUBDIVISION	Sec. or Lot	Town or Block	Rtg	Number of Acres of Land	Land Exclusive of Structures and Improvements	BUILDINGS and Other Structures	MACHINERY Permanently Attached to Real Estate	TOTAL True and Full Value	RURAL		ALL OTHER		MACHINERY Permanently Attached to Real Estate	TOTAL ASSESSED VALUE	Total Assessed Value as Equalized by the Board of Review	FINAL EQUALIZED VALUE	District No.	District No.	District No.	District No.	District No.		District No.																						
												Homestead 20%	Over \$4,000 and Non-Homestead 33 1/8%	Homestead 25%	Over \$4,000 and Non-Homestead 40%					Rate	Rate	Rate	Rate	Rate		Rate																						
												Dollars	Dollars	Dollars	Dollars					Mills	Mills	Mills	Mills	Mills		Mills																						
State of Minnesota		<i>Interlachen Lodge, Inc. 1st Addn.</i>		1	20																																											
State of Minnesota				2																																												
State of Minnesota				3																																												
State of Minnesota				4																																												
State of Minnesota				5																																												
State of Minnesota				6																																												
State of Minnesota				7																																												
State of Minnesota				8																																												
State of Minnesota				9																																												
State of Minnesota				10																																												
State of Minnesota				11																																												
State of Minnesota				12																																												
State of Minnesota				13																																												
State of Minnesota				14																																												
State of Minnesota				15																																												
State of Minnesota				16																																												
State of Minnesota				17																																												
State of Minnesota				18																																												
				19																																												
				20																																												

Interlachen Lodge, Inc. 1st Addn.

Interlachen Lodge, Inc. 1st Addn.

Assessment Roll and Tax List of Real Property in the Town of Woodrow

\*Indicate Type of Property: R-Residential, C-Commercial, I-Industrial, U-Utility, F-Farm

Table with columns: IN WHOSE NAME ASSESSED, TO WHOM TRANSFERRED, SUBDIVISION, TRUE AND FULL VALUATIONS (LAND, BUILDINGS, MACHINERY, TOTAL), ASSESSED VALUATIONS (RURAL, ALL OTHER, MACHINERY, TOTAL ASSESSED), FINAL EQUALIZED VALUE.

Cass County, Minnesota, for Taxes for the Year 1954.

Table with columns: VALUATIONS BY SCHOOL DISTRICTS AS EQUALIZED BY DEPARTMENT OF TAXATION, TAX INCLUDING STATE HOMESTEAD, STATE TAX ON NON-HOMESTEAD, SPECIAL TAXES, TOTAL TAXES, PAID, WHEN PAID, Number of Receipt, March Settlement 1955, June Settlement 1955, Penalty, November Settlement 1955, Collections to First Monday in January 1956, Delinquent on First Monday in January 1956, Total Delinquent Tax and Penalty, REMARKS.

Assessment Roll and Tax List of Real Property in the Town of Woodrow

\*Indicate Type of Property: R-Residential, C-Commercial, I-Industrial, U-Utility, F-Farm

Form 50 (54) WILCO-DAVIS COMPANY, MINNEAPOLIS

Table with columns: IN WHOSE NAME ASSESSED, TO WHOM TRANSFERRED, DESCRIPTION OF PROPERTY, TRUE AND FULL VALUATIONS, ASSESSED VALUATIONS, and FINAL EQUALIZED VALUE. Includes handwritten entries for Enos Stanley, Golden Stanley Marquis, and Flossie K. Sears.

Cass County, Minnesota, for Taxes for the Year 1954.

Table with columns: SOLD FOR TAXES, VALUATIONS BY SCHOOL DISTRICTS AS EQUALIZED BY DEPARTMENT OF TAXATION, Tax including State Homestead, State Tax on Non-Homestead, SPECIAL TAXES, TOTAL TAXES, PAID, WHEN PAID, Number of Receipt, March Settlement 1955, June Settlement 1955, Penalty, November Settlement 1955, Penalty, Collections to First Monday in January 1956, Penalty, Delinquent on First Monday in January 1956, Total Delinquent Tax and Penalty, and REMARKS.





Assessment Roll and Tax List of Real Property in the Town of Woodrow, Minnesota

\*Indicate Type of Property: R-Residential, C-Commercial, I-Industrial, U-Utility, F-Farm

Form 5C (54) MILLER-DAVIS COMPANY, MINNEAPOLIS

Table with columns: IN WHOSE NAME ASSESSED, TO WHOM TRANSFERRED, SUBDIVISION, DESCRIPTION OF PROPERTY, TRUE AND FULL VALUATIONS, ASSESSED VALUATIONS, FINAL EQUALIZED VALUE.

Cass County, Minnesota, for Taxes for the Year 1954.

Table with columns: SOLD FOR TAXES, VALUATIONS BY SCHOOL DISTRICTS AS EQUALIZED BY DEPARTMENT OF TAXATION, Tax including State Homestead, State Tax on Non-Homestead, SPECIAL TAXES, TOTAL TAXES, PAID, WHEN PAID, Number of Receipt, March Settlement 1955, June Settlement 1955, Penalty, November Settlement 1955, Penalty, Collections to First Monday in January 1956, Delinquent on First Monday in January 1956, Total Delinquent Tax and Penalty, REMARKS.

Vertical text on the left edge: Interlachen Lodge, Inc., 1st Addn., Semi-attached Lodge

Vertical text on the right edge: Cedar Grove, Redwood, Interlachen, Assessor's Office, Addn., Karlle Day, the Teepee Portage, West's Breeze, Addn.

Assessment Roll and Tax List of Real Property in the Town of Woodrow

\*Indicate Type of Property: R-Residential, C-Commercial, I-Industrial, U-Utility, F-Farm

Form 50 (54) MILLER-BAYNE COMPANY, MINNEAPOLIS

Table with columns: IN WHOSE NAME ASSESSED, TO WHOM TRANSFERRED, SUBDIVISION, TRUE AND FULL VALUATIONS (LAND, BUILDINGS, MACHINERY, TOTAL), ASSESSED VALUATIONS (RURAL, ALL OTHER, MACHINERY, TOTAL ASSESSED), FINAL EQUALIZED VALUE.

Cass County, Minnesota, for Taxes for the Year 1954.

Table with columns: VALUATIONS BY SCHOOL DISTRICTS AS EQUALIZED BY DEPARTMENT OF TAXATION, Tax including State Homestead, State Tax on Non-Homestead, SPECIAL TAXES, TOTAL TAXES, PAID, WHEN PAID, Number of Receipt, March Settlement 1955, June Settlement 1955, Penalty, November Settlement 1955, Collections to First Monday in January 1956, Delinquent on First Monday in January 1956, Total Delinquent Tax and Penalty, REMARKS.

Interlachen Lodge, Inc. 1st Addn. Senl-on-Sed Lodge

Interlachen Lodge, Inc. 1st Addn. Senl-on-Sed Lodge

\*Indicate Type of Property: R-Residential, C-Commercial, I-Industrial, U-Utility, F-Farm

Form 50 (54) WILSON-JAMES COMPANY, MINNEAPOLIS

DESCRIPTION OF PROPERTY		No. School District	Indicate Homestead Yes or No	Indicate Agricultural Yes or No	Indicate Type of Property	TRUE AND FULL VALUATIONS					ASSESSED VALUATIONS					Total Assessed Value as Equalized by the Board of Review	FINAL EQUALIZED VALUE							
IN WHOSE NAME ASSESSED	TO WHOM TRANSFERRED					SUBDIVISION			Number of Acres of Land	LAND Exclusive of Structures and Improvements	BUILDINGS and Other Structures	MACHINERY Permanently Attached to Real Estate	TOTAL True and Full Value	RURAL				ALL OTHER		MACHINERY Permanently Attached to Real Estate	TOTAL ASSESSED VALUE			
						Sec. or Lot	Town or Block	Rng						Dollars	Dollars			Dollars	Dollars			Dollars		
																			Acres			100ths	Homestead Up to \$4,000 20%	Over \$4,000 and Non-Homestead 33 1/3%
						Dollars	Dollars	Dollars	Dollars	Dollars	Dollars	Dollars	Dollars	Dollars	Dollars									
Ernest & Gladys Insler <del>Christ Community Center</del> <del>Laurence Anderson</del>	Jusale's Park Anderson 77.70' of Lot 11	1	No	No	C	16	200		216			72		72										
		2			L	20	100		120			40		48										

SOLD FOR TAXES	VALUATIONS BY SCHOOL DISTRICTS AS EQUALIZED BY DEPARTMENT OF TAXATION						Tax including State Homestead	State Tax on Non-Homestead	SPECIAL TAXES	TOTAL TAXES	PAID	WHEN PAID	Number of Receipt	March Settlement 1955	June Settlement 1955	Penalty	November Settlement 1955	Penalty	Collections to First Monday in January 1956	Penalty	Delinquent on First Monday in January 1956	Total Delinquent Tax and Penalty	REMARKS					
	District No. ....	District No. ....	District No. ....	District No. ....	District No. ....	District No. ....																		Rate..... Mills	Rate..... Mills	Rate..... Mills	Rate..... Mills	Rate..... Mills
	Dollars	Dollars	Dollars	Dollars	Dollars	Dollars																		\$ cts.	\$ cts.	\$ cts.	\$ cts.	\$ cts.
1											1832	1	2nd Half Paid MAY 31 1955	134/4 8933	916		776											
2											1016	2	1st Half Paid JUL 5 1955			1016	30											
112											2790					916		1932										

Interlachen Lodge, Inc.  
Tusler Park  
Interlachen Lodge, Inc.  
1st Addn.  
Interlachen Lodge, Inc.  
Semi-on-Sed Lodge

Interlachen Lodge, Inc.  
Tusler Park  
Interlachen Lodge, Inc.  
1st Addn.  
Interlachen Lodge, Inc.  
Semi-on-Sed Lodge

Assessment Roll and Tax List of Real Property in the Town of Woodrow, Cass County, Minnesota, for Taxes for the Year 1954.

\*Indicate Type of Property: R-Residential, C-Commercial, I-Industrial, U-Utility, F-Farm

Table with columns: IN WHOSE NAME ASSESSED, TO WHOM TRANSFERRED, SUBDIVISION, DESCRIPTION OF PROPERTY, TRUE AND FULL VALUATIONS, ASSESSED VALUATIONS, VALUATIONS BY SCHOOL DISTRICTS AS EQUALIZED BY DEPARTMENT OF TAXATION, TAXES, PAID, WHEN PAID, Number of Receipt, March Settlement 1955, June Settlement 1955, Penalty, November Settlement 1955, Penalty, Collections to First Monday in January 1956, Delinquent on First Monday in January 1956, Total Delinquent Tax and Penalty, REMARKS.

Interlachen Lodge, Inc. 1st Addn. Semi-on-Sed Lodge

Interlachen Lodge, Inc. 1st Addn. Semi-on-Sed Lodge

Assessment Roll and Tax List of Real Property in the Town of Woodrow, Minnesota

Form 50 (54) WILSON-JONES COMPANY, MINNEAPOLIS

\*Indicate Type of Property: R-Residential, C-Commercial, I-Industrial, U-Utility, F-Farm

Table with columns: IN WHOSE NAME ASSESSED, TO WHOM TRANSFERRED, DESCRIPTION OF PROPERTY, TRUE AND FULL VALUATIONS, ASSESSED VALUATIONS, VALUATIONS BY SCHOOL DISTRICTS AS EQUALIZED BY DEPARTMENT OF TAXATION, SOLD FOR TAXES, PAID, WHEN PAID, Number of Receipt, March Settlement 1955, June Settlement 1955, November Settlement 1955, Collections to First Monday in January 1956, Delinquent on First Monday in January 1956, Total Delinquent Tax and Penalty, REMARKS.

Glen's Point

Geo. L & Bruce F. Smith
Grace M. Noble
Ingeborg Machacek
Maurice & Virginia M. Kocher
Austin J. & Lucille M. Cadwall
Donald H. & Frances Gordon

Summary totals: 366, 1728, 2094, 15, 673, 688, 326, 362, 673, 7466, 350, 16838, 15071, 1769

Vertical text on the right edge of the page, including 'Interlachen Lodge, Inc.', 'Tusler Park', 'Glen's Point', 'Semi-or-Sed Lodge', 'Karl's Bay', 'The Peape Portage', 'West's Brewery', 'End of The Trail 2d', 'End of The Trail 1st', 'End of The Trail 3rd', 'End of The Trail 4th', 'End of The Trail 5th', 'End of The Trail 6th', 'End of The Trail 7th', 'End of The Trail 8th', 'End of The Trail 9th', 'End of The Trail 10th', 'End of The Trail 11th', 'End of The Trail 12th', 'End of The Trail 13th', 'End of The Trail 14th', 'End of The Trail 15th', 'End of The Trail 16th', 'End of The Trail 17th', 'End of The Trail 18th', 'End of The Trail 19th', 'End of The Trail 20th', 'End of The Trail 21st', 'End of The Trail 22nd', 'End of The Trail 23rd', 'End of The Trail 24th', 'End of The Trail 25th', 'End of The Trail 26th', 'End of The Trail 27th', 'End of The Trail 28th', 'End of The Trail 29th', 'End of The Trail 30th', 'End of The Trail 31st', 'End of The Trail 32nd', 'End of The Trail 33rd', 'End of The Trail 34th', 'End of The Trail 35th', 'End of The Trail 36th', 'End of The Trail 37th', 'End of The Trail 38th', 'End of The Trail 39th', 'End of The Trail 40th', 'End of The Trail 41st', 'End of The Trail 42nd', 'End of The Trail 43rd', 'End of The Trail 44th', 'End of The Trail 45th', 'End of The Trail 46th', 'End of The Trail 47th', 'End of The Trail 48th', 'End of The Trail 49th', 'End of The Trail 50th', 'End of The Trail 51st', 'End of The Trail 52nd', 'End of The Trail 53rd', 'End of The Trail 54th', 'End of The Trail 55th', 'End of The Trail 56th', 'End of The Trail 57th', 'End of The Trail 58th', 'End of The Trail 59th', 'End of The Trail 60th', 'End of The Trail 61st', 'End of The Trail 62nd', 'End of The Trail 63rd', 'End of The Trail 64th', 'End of The Trail 65th', 'End of The Trail 66th', 'End of The Trail 67th', 'End of The Trail 68th', 'End of The Trail 69th', 'End of The Trail 70th', 'End of The Trail 71st', 'End of The Trail 72nd', 'End of The Trail 73rd', 'End of The Trail 74th', 'End of The Trail 75th', 'End of The Trail 76th', 'End of The Trail 77th', 'End of The Trail 78th', 'End of The Trail 79th', 'End of The Trail 80th', 'End of The Trail 81st', 'End of The Trail 82nd', 'End of The Trail 83rd', 'End of The Trail 84th', 'End of The Trail 85th', 'End of The Trail 86th', 'End of The Trail 87th', 'End of The Trail 88th', 'End of The Trail 89th', 'End of The Trail 90th', 'End of The Trail 91st', 'End of The Trail 92nd', 'End of The Trail 93rd', 'End of The Trail 94th', 'End of The Trail 95th', 'End of The Trail 96th', 'End of The Trail 97th', 'End of The Trail 98th', 'End of The Trail 99th', 'End of The Trail 100th'

Assessment Roll and Tax List of Real Property in the Town of Woodrow, Minnesota

Cass County, Minnesota, for Taxes for the Year 1954.

\*Indicate Type of Property: R-Residential, C-Commercial, I-Industrial, U-Utility, F-Farm

Table with columns for property description, valuations, taxes, and payment status. Includes handwritten entries for 'Glen's Point' and 'Outlot A'.

Vertical text on the left margin: Interlachen Lodge, Inc., 1st Addn., Semi-on-Sed Lodge, Gusler Park, Glen's Point.

Vertical text on the right margin: Cedar Grove Beach, Interlachen Lodge, Inc., 1st Addn., Rearrangement, Karl's Bay, me Teape Porchage, West's Breeze, End of the Trail 2d Addn.







Assessment Roll and Tax List of Real Property in the Town of Woodrow, Minnesota

\*Indicate Type of Property: R-Residential, C-Commercial, I-Industrial, U-Utility, F-Farm

Form 30 (54) WILSON-JAY COMPANY, MINNEAPOLIS

Table with columns: IN WHOSE NAME ASSESSED, TO WHOM TRANSFERRED, DESCRIPTION OF PROPERTY, TRUE AND FULL VALUATIONS, ASSESSED VALUATIONS, and FINAL EQUALIZED VALUE.

Cass County, Minnesota, for Taxes for the Year 1954.

Table with columns: SOLD FOR TAXES, VALUATIONS BY SCHOOL DISTRICTS AS EQUALIZED BY DEPARTMENT OF TAXATION, Tax including State Homestead, State Tax on Non-Homestead, SPECIAL TAXES, TOTAL TAXES, PAID, WHEN PAID, Number of Receipt, March Settlement 1955, June Settlement 1955, Penalty, November Settlement 1955, Penalty, Collections to First Monday in January 1956, Penalty, Delinquent on First Monday in January 1956, Total Delinquent Tax and Penalty, REMARKS.

Vertical text on the left margin: Interlachen Lodge, Inc. 1st Adm., Gusler Park, Glen's Point, End of the Trail, Semi-on-Red Lodge.

Vertical text on the right margin: Cedar Grove Beach, Interlachen Lodge, Inc. 1st Adm., Rearrangement, End of the Trail, Karl Bay, The Teepee Portage, West's Breezy, End of the Trail 2nd Adm.

Assessment Roll and Tax List of Real Property in the Town of Woodrow, Cass County, Minnesota, for Taxes for the Year 1954.

Form 50 (54) MILLER-DAY COMPANY, MINNEAPOLIS

\*Indicate Type of Property: R-Residential, C-Commercial, I-Industrial, U-Utility, F-Farm

Table with columns: IN WHOSE NAME ASSESSED, TO WHOM TRANSFERRED, SUBDIVISION, DESCRIPTION OF PROPERTY, TRU AND FULL VALUATIONS, ASSESSED VALUATIONS, FINAL EQUALIZED VALUE.

Table with columns: VALUATIONS BY SCHOOL DISTRICTS AS EQUALIZED BY DEPARTMENT OF TAXATION, TAX INCLUDING STATE HOMESTEAD, SPECIAL TAXES, TOTAL TAXES, PAID, WHEN PAID, Number of Receipt, March Settlement 1955, June Settlement 1955, November Settlement 1955, Collections to First Monday in January 1956, Delinquent on First Monday in January 1956, Total Delinquent Tax and Penalty, REMARKS.

Vertical text on the left margin: Interlachen Lodge, Inc., Gusler Park, Glen's Point, End of the Trail, Semi-on-Sed Lodge.

Vertical text on the right margin: End of the Trail, Rearrangement, Karlie Bay, the Peope Portage, West's Breezy.

Assessment Roll and Tax List of Real Property in the Town of Woodrow, Minnesota

\*Indicate Type of Property: R-Residential, C-Commercial, I-Industrial, U-Utility, F-Farm

Table with columns: IN WHOSE NAME ASSESSED, TO WHOM TRANSFERRED, DESCRIPTION OF PROPERTY, TRUE AND FULL VALUATIONS, ASSESSED VALUATIONS, FINAL EQUALIZED VALUE.

Table with columns: SOLD FOR TAXES, VALUATIONS BY SCHOOL DISTRICTS AS EQUALIZED BY DEPARTMENT OF TAXATION, Tax including State Homestead, State Tax on Non-Homestead, SPECIAL TAXES, TOTAL TAXES, PAID, WHEN PAID, Number of Receipt, March Settlement 1955, June Settlement 1955, Penalty, November Settlement 1955, Collections to First Monday in January 1956, Delinquent on First Monday in January 1956, Total Delinquent Tax and Penalty, REMARKS.

Vertical text on the left margin: Interlachen Lodge, Inc., Glen's Point, End of the Trail, Semi-on-Seed Lodge.

Vertical text on the right margin: Cedar Grove Beach, Interlachen Lodge, Inc., Rearrangement, Karlie Bay, the Teepe Porch, Nest's Brewery.

Assessment Roll and Tax List of Real Property in the Town of Woodrow

\*Indicate Type of Property: R-Residential, C-Commercial, I-Industrial, U-Utility, F-Farm

Form 5C (54) WILSON-DAY COMPANY, MINNEAPOLIS

Table with columns: IN WHOSE NAME ASSESSED, TO WHOM TRANSFERRED, SUBDIVISION, TRUE AND FULL VALUATIONS, ASSESSED VALUATIONS, FINAL EQUALIZED VALUE.

Cass County, Minnesota, for Taxes for the Year 1954.

Table with columns: VALUATIONS BY SCHOOL DISTRICTS AS EQUALIZED BY DEPARTMENT OF TAXATION, Tax including State Homestead, State Tax on Non-Homestead, SPECIAL TAXES, TOTAL TAXES, PAID, WHEN PAID, Number of Receipt, March Settlement 1955, June Settlement 1955, Penalty, November Settlement 1955, Penalty, Collections to First Monday in January 1956, Penalty, Delinquent on First Monday in January 1956, Total Delinquent Tax and Penalty, REMARKS.

Assessment Roll and Tax List of Real Property in the Town of Woodrow, Minnesota

Form 50 (54) WISCONSIN COUNTY, MINNESOTA

\*Indicate Type of Property: R-Residential, C-Commercial, I-Industrial, U-Utility, F-Farm

Main table with columns: IN WHOSE NAME ASSESSED, TO WHOM TRANSFERRED, DESCRIPTION OF PROPERTY, TRUE AND FULL VALUATIONS, ASSESSED VALUATIONS, VALUATIONS BY SCHOOL DISTRICTS AS EQUALIZED BY DEPARTMENT OF TAXATION, SOLD FOR TAXES, PAID, WHEN PAID, Number of Receipt, March Settlement, June Settlement, Penalty, November Settlement, Collections to First Monday in January 1956, Delinquent on First Monday in January 1956, Total Delinquent Tax and Penalty, REMARKS.

Vertical text on the left margin: Interlachen Lodge, Inc., Gusler Park, Glen's Point, End Of The Trail, 1st. Adm., Semi-on-Sed Lodge

Vertical text on the right margin: End Of The Trail 3rd, Rearrangement, End Of The Trail, Karlie Bay and Teepe Porchage, Host's Brewery, End Of The Trail 2nd, Adm.

Assessment Roll and Tax List of Real Property in the Town of Woodrow

\*Indicate Type of Property: R-Residential, C-Commercial, I-Industrial, U-Utility, F-Farm

Cass County, Minnesota, for Taxes for the Year 1954.

Table with columns: IN WHOSE NAME ASSESSED, TO WHOM TRANSFERRED, DESCRIPTION OF PROPERTY, TRUE AND FULL VALUATIONS, ASSESSED VALUATIONS, VALUATIONS BY SCHOOL DISTRICTS AS EQUALIZED BY DEPARTMENT OF TAXATION, TAX INCLUDING STATE HOMESTEAD, State Tax on Non-Homestead, SPECIAL TAXES, TOTAL TAXES, PAID, WHEN PAID, Number of Receipt, March Settlement 1955, June Settlement 1955, Penalty, November Settlement 1955, Collections to First Monday in January 1956, Delinquent on First Monday in January 1956, Total Delinquent Tax and Penalty, REMARKS.

Vertical text on the left margin: Interlachen Lodge, Inc., Pusler Park, Glen's Point, End of the Trail, 1st Addn, Semi-on-Seed Lodge.

Vertical text on the right margin: Cedar Grove, Locost, Rearrangement, End of the Trail, Rattle Bay, Teepee Portage, End of the Trail 2nd Addn, West's Brewery.

Assessment Roll and Tax List of Real Property in the Town of Woodrow, Minnesota

Cass County, Minnesota, for Taxes for the Year 1954.

\*Indicate Type of Property: R-Residential, C-Commercial, I-Industrial, U-Utility, F-Farm

Table with columns: IN WHOSE NAME ASSESSED, TO WHOM TRANSFERRED, DESCRIPTION OF PROPERTY, TRUE AND FULL VALUATIONS, ASSESSED VALUATIONS, VALUATIONS BY SCHOOL DISTRICTS AS EQUALIZED BY DEPARTMENT OF TAXATION, TAXES, PAID, WHEN PAID, Number of Receipt, March Settlement 1955, June Settlement 1955, November Settlement 1955, Collections to First Monday in January 1956, Delinquent on First Monday in January 1956, Total Delinquent Tax and Penalty, REMARKS.

Vertical text on the left margin: Interlachen Lodge, Inc., Glen's Point, End of the Trail, Semi-or-Sed Lodge

Vertical text on the right margin: Cedar Grove, End of the Trail, 3rd, 1st, 2nd, 3rd, 4th, 5th, 6th, 7th, 8th, 9th, 10th, 11th, 12th, 13th, 14th, 15th, 16th, 17th, 18th, 19th, 20th



Assessment Roll and Tax List of Real Property in the Town of Woodrow

\*Indicate Type of Property: R-Residential, C-Commercial, I-Industrial, U-Utility, F-Farm

Cass County, Minnesota, for Taxes for the Year 1954.

Table with columns: IN WHOSE NAME ASSESSED, TO WHOM TRANSFERRED, DESCRIPTION OF PROPERTY, TRUE AND FULL VALUATIONS, ASSESSED VALUATIONS, VALUATIONS BY SCHOOL DISTRICTS AS EQUALIZED BY DEPARTMENT OF TAXATION, Tax including State Homestead, State Tax on Non-Homestead, SPECIAL TAXES, TOTAL TAXES, PAID, WHEN PAID, Number of Receipt, March Settlement 1955, June Settlement 1955, Penalty, November Settlement 1955, Penalty, Collections to First Monday in January 1956, Penalty, Delinquent on First Monday in January 1956, Total Delinquent Tax and Penalty, REMARKS.

SUBDIVISION  
End of the Trail - 2nd Addn  
(Ch 5 Sec. 14-140-29)

Interlachen Lodge, Inc. 1st Addn  
Tusler Park  
Glen's Point  
End of the Trail  
Semi-on-Sed Lodge  
End of the Trail 2nd Addn

End of the Trail 3rd Addn  
Rearrangement  
End of the Trail  
Karl's Bay  
me Teepe Portage  
West's Brewery

Table with columns: IN WHOSE NAME ASSESSED, TO WHOM TRANSFERRED, DESCRIPTION OF PROPERTY, TRUE AND FULL VALUATIONS, ASSESSED VALUATIONS, VALUATIONS BY SCHOOL DISTRICTS AS EQUALIZED BY DEPARTMENT OF TAXATION, Tax including State Homestead, State Tax on Non-Homestead, SPECIAL TAXES, TOTAL TAXES, PAID, WHEN PAID, Number of Receipt, March Settlement 1955, June Settlement 1955, Penalty, November Settlement 1955, Penalty, Collections to First Monday in January 1956, Penalty, Delinquent on First Monday in January 1956, Total Delinquent Tax and Penalty, REMARKS.

610 636 1146 392 382 9530 210 9740 6589 1871 1230

Assessment Roll and Tax List of Real Property in the Town of Woodrow, Minnesota

\*Indicate Type of Property: R-Residential, C-Commercial, I-Industrial, U-Utility, F-Farm

Table with columns: IN WHOSE NAME ASSESSED, TO WHOM TRANSFERRED, DESCRIPTION OF PROPERTY, TRUE AND FULL VALUATIONS, ASSESSED VALUATIONS, VALUATIONS BY SCHOOL DISTRICTS AS EQUALIZED BY DEPARTMENT OF TAXATION, TAX INCLUDING STATE HOMESTEAD, STATE TAX ON NON-HOMESTEAD, SPECIAL TAXES, TOTAL TAXES, PAID, WHEN PAID, Number of Receipt, March Settlement 1955, June Settlement 1955, Penalty, November Settlement 1955, Penalty, Collections to First Monday in January 1956, Penalty, Delinquent on First Monday in January 1956, Total Delinquent Tax and Penalty, REMARKS.

End of the Trail 2nd Addn

Rodney W. & Winnie H. Gates

" " "

Gleason & Alma L. Allen

Geo. & Walberg Cornelius

George Cornelius

Mary E. Stebbins

Paul J. Newstrom

" " "

Joseph J. Pierard

" " "

State of Minnesota

State of Minnesota

State of Minnesota

State of Minnesota

State of Minnesota

State of Minnesota

State of Minnesota

240 1331 1591 232 137 369

H 232 137 369

9200 78

9278

3199

3353

2726

Interlachen Lodge, Inc. Busler Park Glen's Point End of the Trail 1st Addn Semi-on-Red Lodge End of the Trail 2nd Addn

Interlachen Lodge, Inc. Busler Park Glen's Point End of the Trail 1st Addn Rearrangement End of the Trail 1st Addn Rearrangement Karl's Bay and Teepe Portage Host's Breezy

Assessment Roll and Tax List of Real Property in the Town of Woodrow

\*Indicate Type of Property: R-Residential, C-Commercial, I-Industrial, U-Utility, F-Farm

Form 50 (54) - MINN. REV. STAT., 1953

Table with columns: IN WHOSE NAME ASSESSED, TO WHOM TRANSFERRED, DESCRIPTION OF PROPERTY, TRUE AND FULL VALUATIONS, ASSESSED VALUATIONS, FINAL EQUALIZED VALUE.

Cass County, Minnesota, for Taxes for the Year 1954.

Table with columns: SOLD FOR TAXES, VALUATIONS BY SCHOOL DISTRICTS AS EQUALIZED BY DEPARTMENT OF TAXATION, Tax including State Homestead, State Tax on Non-Homestead, SPECIAL TAXES, TOTAL TAXES, PAID, WHEN PAID, Number of Receipt, March Settlement 1955, June Settlement 1955, Penalty, November Settlement 1955, Penalty, Collections to First Monday in January 1956, Penalty, Delinquent on First Monday in January 1956, Total Delinquent Tax and Penalty, REMARKS.

Assessment Roll and Tax List of Real Property in the Town of Woodrow, Minnesota

Form 50 (54) MILLER-BAYNE COMPANY, MINNEAPOLIS

\*Indicate Type of Property: R-Residential, C-Commercial, I-Industrial, U-Utility, F-Farm

Table with columns: IN WHOSE NAME ASSESSED, TO WHOM TRANSFERRED, DESCRIPTION OF PROPERTY, TRUE AND FULL VALUATIONS, ASSESSED VALUATIONS, VALUATIONS BY SCHOOL DISTRICTS AS EQUALIZED BY DEPARTMENT OF TAXATION, TAXES, PAID, WHEN PAID, Number of Receipt, March Settlement 1955, June Settlement 1955, November Settlement 1955, Penalty, Collections to First Monday in January 1956, Delinquent on First Monday in January 1956, Total Delinquent Tax and Penalty, REMARKS.

Assessment Roll and Tax List of Real Property in the Town of Woodrow

\*Indicate Type of Property: R-Residential, C-Commercial, I-Industrial, U-Utility, F-Farm

Form 50 (54) MARCH 1954

Table with columns: IN WHOSE NAME ASSESSED, TO WHOM TRANSFERRED, DESCRIPTION OF PROPERTY, TRUE AND FULL VALUATIONS, ASSESSED VALUATIONS, FINAL EQUALIZED VALUE.

Cass County, Minnesota, for Taxes for the Year 1954.

Table with columns: VALUATIONS BY SCHOOL DISTRICTS AS EQUALIZED BY DEPARTMENT OF TAXATION, Tax including State Homestead, State Tax on Non-Homestead, SPECIAL TAXES, TOTAL TAXES, PAID, WHEN PAID, Number of Receipt, March Settlement 1955, June Settlement 1955, Penalty, November Settlement 1955, Penalty, Collections to First Monday in January 1956, Penalty, Delinquent on First Monday in January 1956, Total Delinquent Tax and Penalty, REMARKS.

Assessment Roll and Tax List of Real Property in the Town of Woodrow, Minnesota

Cass County, Minnesota, for Taxes for the Year 1954.

Table with columns for IN WHOSE NAME ASSESSED, TO WHOM TRANSFERRED, DESCRIPTION OF PROPERTY, TRUE AND FULL VALUATIONS, ASSESSED VALUATIONS, and FINAL EQUALIZED VALUE. Includes handwritten entries for Daisy L. Hankson and Alma B. Vaughn.

Table with columns for VALUATIONS BY SCHOOL DISTRICTS AS EQUALIZED BY DEPARTMENT OF TAXATION, SOLD FOR TAXES, TAXES (District, State, SPECIAL, TOTAL), PAID, WHEN PAID, Number of Receipt, and settlement dates. Includes handwritten entries for payments on May 31, 1955.

Assessment Roll and Tax List of Real Property in the Town of Woodbury

\*Indicate Type of Property: R-Residential, C-Commercial, I-Industrial, U-Utility, F-Farm

Form 50 (54) MILLER-BAYNE COMPANY, MINNEAPOLIS

Table with columns: IN WHOSE NAME ASSESSED, TO WHOM TRANSFERRED, DESCRIPTION OF PROPERTY, TRUE AND FULL VALUATIONS, ASSESSED VALUATIONS, FINAL EQUALIZED VALUE.

Cass County, Minnesota, for Taxes for the Year 1954.

Table with columns: VALUATIONS BY SCHOOL DISTRICTS AS EQUALIZED BY DEPARTMENT OF TAXATION, TAXES, PAID, WHEN PAID, Number of Receipt, March Settlement, June Settlement, November Settlement, Collections to First Monday in January, Delinquent on First Monday in January, Total Delinquent Tax and Penalty, REMARKS.

Assessment Roll and Tax List of Real Property in the Town of Woodrow, Minnesota

\*Indicate Type of Property: R-Residential, C-Commercial, I-Industrial, U-Utility, F-Farm

Form 50 (54) - MINN. STATE GOVERNMENT, MINNEAPOLIS

Table with columns: IN WHOSE NAME ASSESSED, TO WHOM TRANSFERRED, DESCRIPTION OF PROPERTY, TRUE AND FULL VALUATIONS, ASSESSED VALUATIONS, FINAL EQUALIZED VALUE. Includes handwritten entries for Alice J. Clemens and Francis D. Heeman.

Cass County, Minnesota, for Taxes for the Year 1954.

Table with columns: VALUATIONS BY SCHOOL DISTRICTS AS EQUALIZED BY DEPARTMENT OF TAXATION, TAXES, PAID, WHEN PAID, Number of Receipt, March Settlement 1955, June Settlement 1955, November Settlement 1955, Collections to First Monday in January 1956, Delinquent on First Monday in January 1956, Total Delinquent Tax and Penalty, REMARKS. Includes handwritten tax amounts and a 'PAID IN FULL' entry.





Assessment Roll and Tax List of Real Property in the Town of Woodrow

\*Indicate Type of Property: R-Residential, C-Commercial, I-Industrial, U-Utility, F-Farm

Cass County, Minnesota, for Taxes for the Year 1954.

Table with columns: IN WHOSE NAME ASSESSED, TO WHOM TRANSFERRED, DESCRIPTION OF PROPERTY, TRUE AND FULL VALUATIONS, ASSESSED VALUATIONS, VALUATIONS BY SCHOOL DISTRICTS AS EQUALIZED BY DEPARTMENT OF TAXATION, SOLD FOR TAXES, PAID, WHEN PAID, Number of Receipt, March Settlement 1955, June Settlement 1955, November Settlement 1955, Collections to First Monday in January 1956, Delinquent on First Monday in January 1956, Total Delinquent Tax and Penalty, REMARKS.

End of the trail - 2nd addn.

Juanita J. Wambago State of Minnesota

Edmund A. Violet J. Kinnon State of Minnesota

Nichols O. Sannerberg State of Minnesota

Walter C. Schardin State of Minnesota

109 109 36 36

36 828 24 852

284

284 284

1.42 cancelled

1.42 cancelled

PAID IN FULL MAY 31 1955

PAID IN FULL MAY 31 1955

284







Assessment Roll and Tax List of Real Property in the Town of Woodrow, \*Indicate Type of Property: R-Residential, C-Commercial, I-Industrial, U-Utility, F-Farm

Table with columns: IN WHOSE NAME ASSESSED, TO WHOM TRANSFERRED, SUBDIVISION, TRUE AND FULL VALUATIONS (LAND, BUILDINGS, MACHINERY, TOTAL), ASSESSED VALUATIONS (RURAL, ALL OTHER, MACHINERY, TOTAL ASSESSED), FINAL EQUALIZED VALUE.

Cass County, Minnesota, for Taxes for the Year 1954.

Table with columns: VALUATIONS BY SCHOOL DISTRICTS AS EQUALIZED BY DEPARTMENT OF TAXATION, Tax including State Homestead, SPECIAL TAXES, TOTAL TAXES, PAID, WHEN PAID, Number of Receipt, March Settlement, June Settlement, November Settlement, Collections to First Monday in January, Delinquent on First Monday in January, Total Delinquent Tax and Penalty, REMARKS.

Assessment Roll and Tax List of Real Property in the Town of Woodrow, Minnesota

\*Indicate Type of Property: R-Residential, C-Commercial, I-Industrial, U-Utility, F-Farm

Table with columns: IN WHOSE NAME ASSESSED, TO WHOM TRANSFERRED, SUBDIVISION, ACRES, TRUE AND FULL VALUATIONS (LAND, BUILDINGS, MACHINERY, TOTAL), ASSESSED VALUATIONS (RURAL, ALL OTHER, MACHINERY, TOTAL), FINAL EQUALIZED VALUE.

Cass County, Minnesota, for Taxes for the Year 1954.

Table with columns: SOLD FOR TAXES, VALUATIONS BY SCHOOL DISTRICTS AS EQUALIZED BY DEPARTMENT OF TAXATION, TAX INCLUDING STATE HOMESTEAD, SPECIAL TAXES, TOTAL TAXES, PAID, WHEN PAID, Number of Receipt, March Settlement 1955, June Settlement 1955, November Settlement 1955, Collections to First Monday in January 1956, Delinquent on First Monday in January 1956, Total Delinquent Tax and Penalty, REMARKS.

Assessment Roll and Tax List of Real Property in the Town of Woodrow

\*Indicate Type of Property: R-Residential, C-Commercial, I-Industrial, U-Utility, F-Farm

Table with columns: IN WHOSE NAME ASSESSED, TO WHOM TRANSFERRED, SUBDIVISION, TRUE AND FULL VALUATIONS (LAND, BUILDINGS, MACHINERY, TOTAL), ASSESSED VALUATIONS (RURAL, ALL OTHER, MACHINERY, TOTAL), FINAL EQUALIZED VALUE.

Cass County, Minnesota, for Taxes for the Year 1954.

Table with columns: SOLD FOR TAXES, VALUATIONS BY SCHOOL DISTRICTS AS EQUALIZED BY DEPARTMENT OF TAXATION, SPECIAL TAXES, TOTAL TAXES, PAID, WHEN PAID, Number of Receipt, March Settlement 1955, June Settlement 1955, November Settlement 1955, Collections to First Monday in January 1956, Delinquent on First Monday in January 1956, Total Delinquent Tax and Penalty, REMARKS.



Assessment Roll and Tax List of Real Property in the Town of Woodrow, Minnesota

\*Indicate Type of Property: R-Residential, C-Commercial, I-Industrial, U-Utility, F-Farm

Form 50 (54) MILLER-SAYRE COMPANY, MINNEAPOLIS

Table with columns: IN WHOSE NAME ASSESSED, TO WHOM TRANSFERRED, SUBDIVISION, TRUE AND FULL VALUATIONS (LAND, BUILDINGS, MACHINERY, TOTAL), ASSESSED VALUATIONS (RURAL, ALL OTHER, MACHINERY, TOTAL), FINAL EQUALIZED VALUE.

Cass County, Minnesota, for Taxes for the Year 1954.

Table with columns: SOLD FOR TAXES, VALUATIONS BY SCHOOL DISTRICTS AS EQUALIZED BY DEPARTMENT OF TAXATION, TAX INCLUDING STATE HOMESTEAD, SPECIAL TAXES, TOTAL TAXES, PAID, WHEN PAID, Number of Receipt, March Settlement 1955, June Settlement 1955, November Settlement 1955, Collections to First Monday in January 1956, Delinquent on First Monday in January 1956, Total Delinquent Tax and Penalty, REMARKS.

Assessment Roll and Tax List of Real Property in the \_\_\_\_\_ of \_\_\_\_\_, \*Indicate Type of Property: R-Residential, C-Commercial, I-Industrial, U-Utility, F-Farm

Form 5C (54) WILCO-DAVIS COMPANY, MINNEAPOLIS

Table with columns: IN WHOSE NAME ASSESSED, TO WHOM TRANSFERRED, DESCRIPTION OF PROPERTY, TRUE AND FULL VALUATIONS, ASSESSED VALUATIONS, FINAL EQUALIZED VALUE.

Cass County, Minnesota, for Taxes for the Year 1954.

Table with columns: VALUATIONS BY SCHOOL DISTRICTS AS EQUALIZED BY DEPARTMENT OF TAXATION, TAXES, PAID, WHEN PAID, Number of Receipt, March Settlement, June Settlement, Penalty, November Settlement, Collections to First Monday in January, Delinquent on First Monday in January, Total Delinquent Tax and Penalty, REMARKS.

Assessment Roll and Tax List of Real Property in the Town of Woodrow

\*Indicate Type of Property: R-Residential, C-Commercial, I-Industrial, U-Utility, F-Farm

Cass County, Minnesota, for Taxes for the Year 1954.

Table with columns: IN WHOSE NAME ASSESSED, TO WHOM TRANSFERRED, SUBDIVISION, TRUE AND FULL VALUATIONS, ASSESSED VALUATIONS, VALUATIONS BY SCHOOL DISTRICTS AS EQUALIZED BY DEPARTMENT OF TAXATION, TAXES, PAID, WHEN PAID, etc.

Assessment Roll and Tax List of Real Property in the Town of Woodrow, Minnesota. \*Indicate Type of Property: R-Residential, C-Commercial, I-Industrial, U-Utility, F-Farm

Cass County, Minnesota, for Taxes for the Year 1954.

Table with columns: IN WHOSE NAME ASSESSED, TO WHOM TRANSFERRED, SUBDIVISION, TRUE AND FULL VALUATIONS, ASSESSED VALUATIONS, VALUATIONS BY SCHOOL DISTRICTS AS EQUALIZED BY DEPARTMENT OF TAXATION, TAXES, PAID, WHEN PAID, Number of Receipt, March Settlement 1955, June Settlement 1955, Penalty, November Settlement 1955, Penalty, Collections to First Monday in January 1956, Penalty, Delinquent on First Monday in January 1956, Total Delinquent Tax and Penalty, REMARKS. Includes handwritten entries for 'Allen & Thelma Wheeler' and various lot numbers.





Assessment Roll and Tax List of Real Property in the Town of Woodrow

\*Indicate Type of Property: R-Residential, C-Commercial, I-Industrial, U-Utility, F-Farm

Form 5C (54) MINN. STATE GOVERNMENT, MINNAPOLIS

Table with columns: IN WHOSE NAME ASSESSED, TO WHOM TRANSFERRED, SUBDIVISION, TRUE AND FULL VALUATIONS, ASSESSED VALUATIONS, FINAL EQUALIZED VALUE. Includes handwritten entries for 'Allen + Thelma Wheeler' and 'Wm. J. + Evelyn M. Spain'.

Cass County, Minnesota, for Taxes for the Year 1954.

Table with columns: SOLD FOR TAXES, VALUATIONS BY SCHOOL DISTRICTS AS EQUALIZED BY DEPARTMENT OF TAXATION, Tax including State Homestead, State Tax on Non-Homestead, SPECIAL TAXES, TOTAL TAXES, PAID, WHEN PAID, Number of Receipt, March Settlement 1955, June Settlement 1955, November Settlement 1955, Collections to First Monday in January 1956, Delinquent on First Monday in January 1956, Total Delinquent Tax and Penalty, REMARKS. Includes handwritten notes like 'PAID IN FULL MAY 27 1955'.









Assessment Roll and Tax List of Real Property in the Town of Woodrow, \*Indicate Type of Property: R-Residential, C-Commercial, I-Industrial, U-Utility, F-Farm

Form 5C (54)

Table with columns: IN WHOSE NAME ASSESSED, TO WHOM TRANSFERRED, DESCRIPTION OF PROPERTY, TRUE AND FULL VALUATIONS, ASSESSED VALUATIONS, and FINAL EQUALIZED VALUE. Includes handwritten entries like 'Louis F. Parker' and 'Re-Arrangement, End O' The Trail'.

Cass County, Minnesota, for Taxes for the Year 1954.

Table with columns: VALUATIONS BY SCHOOL DISTRICTS AS EQUALIZED BY DEPARTMENT OF TAXATION, Tax including State Homestead, State Tax on Non-Homestead, SPECIAL TAXES, TOTAL TAXES, PAID, WHEN PAID, Number of Receipt, March Settlement 1955, June Settlement 1955, Penalty, November Settlement 1955, Collections to First Monday in January 1956, Delinquent on First Monday in January 1956, Total Delinquent Tax and Penalty, REMARKS.





Assessment Roll and Tax List of Real Property in the Town of Woodrow,

\*Indicate Type of Property: R-Residential, C-Commercial, I-Industrial, U-Utility, F-Farm

Form 5C (54) UNIFORM BASIS, MINNAPOLIS

Table with columns for: IN WHOSE NAME ASSESSED, TO WHOM TRANSFERRED, SUBDIVISION, Description of Property, TRUE AND FULL VALUATIONS (LAND, BUILDINGS, MACHINERY, TOTAL), ASSESSED VALUATIONS (RURAL, ALL OTHER, MACHINERY, TOTAL ASSESSED VALUE), FINAL EQUALIZED VALUE, SOLD FOR TAXES, VALUATIONS BY SCHOOL DISTRICTS AS EQUALIZED BY DEPARTMENT OF TAXATION, Tax including State Homestead, State Tax on Non-Homestead, SPECIAL TAXES, TOTAL TAXES, PAID, WHEN PAID, Number of Receipt, March Settlement 1955, June Settlement 1955, Penalty, November Settlement 1955, Collections to First Monday in January 1956, Delinquent on First Monday in January 1956, Total Delinquent Tax and Penalty, REMARKS.

Re-Arrangement, End O' The Trail

Table rows 1 through 20, listing property details for 'State of Minnesota' and 'Re-Arrangement, End O' The Trail'.

Interlachen Lodge, Inc. 1st of The Trail 3rd Addn. 1st of The Trail 2nd Addn. 2nd of The Trail 3rd Addn. 3rd of The Trail 4th Addn. 4th of The Trail 5th Addn. 5th of The Trail 6th Addn. 6th of The Trail 7th Addn. 7th of The Trail 8th Addn. 8th of The Trail 9th Addn. 9th of The Trail 10th Addn. 10th of The Trail 11th Addn. 11th of The Trail 12th Addn. 12th of The Trail 13th Addn. 13th of The Trail 14th Addn. 14th of The Trail 15th Addn. 15th of The Trail 16th Addn. 16th of The Trail 17th Addn. 17th of The Trail 18th Addn. 18th of The Trail 19th Addn. 19th of The Trail 20th Addn.

1st of The Trail 2nd Addn. 1st of The Trail 3rd Addn. 1st of The Trail 4th Addn. 1st of The Trail 5th Addn. 1st of The Trail 6th Addn. 1st of The Trail 7th Addn. 1st of The Trail 8th Addn. 1st of The Trail 9th Addn. 1st of The Trail 10th Addn. 1st of The Trail 11th Addn. 1st of The Trail 12th Addn. 1st of The Trail 13th Addn. 1st of The Trail 14th Addn. 1st of The Trail 15th Addn. 1st of The Trail 16th Addn. 1st of The Trail 17th Addn. 1st of The Trail 18th Addn. 1st of The Trail 19th Addn. 1st of The Trail 20th Addn.



Assessment Roll and Tax List of Real Property in the *Town of Wauvoda*,

\*Indicate Type of Property: R-Residential, C-Commercial, I-Industrial, U-Utility, F-Farm

Form 5C(54) 1954

Interlachen Lodge, Inc. Glen's Point, Inc. Re-arrangement End of The Trail

IN WHOSE NAME ASSESSED	TO WHOM TRANSFERRED	DESCRIPTION OF PROPERTY					No. School District	Indicate Homestead Yes or No	Indicate Agricultural Yes or No	Indicate Type of Property	TRUE AND FULL VALUATIONS			ASSESSED VALUATIONS					FINAL EQUALIZED VALUE					
		SUBDIVISION	Sec. or Lot	Town or Block	Rng	Number of Acres of Land					LAND Exclusive of Structures and Improvements	BUILDINGS and Other Structures	MACHINERY Permanently Attached to Real Estate	TOTAL True and Full Value	RURAL		ALL OTHER			TOTAL ASSESSED VALUE	Total Assessed Value as Equalized by the Board of Review			
															Acres	100ths	Homestead Up to \$4,000 20%	Over \$4,000 and Non-Homestead 33 1/3%				Homestead Up to \$4,000 25%	Over \$4,000 and Non-Homestead 40%	MACHINERY Permanently Attached to Real Estate 33 1/3%
State of Minnesota	Re-Arrangement, End O' The Trail																							
State of Minnesota																								
State of Minnesota																								
State of Minnesota																								
State of Minnesota																								
State of Minnesota																								
State of Minnesota																								
W. D. Giersten	State of Minnesota																							
State of Minnesota																								
State of Minnesota																								
State of Minnesota																								
State of Minnesota																								
State of Minnesota																								
State of Minnesota																								
State of Minnesota																								
Robert Gamble																								
State of Minnesota																								
State of Minnesota																								
State of Minnesota																								

Cass County, Minnesota, for Taxes for the Year 1954.

SOLD FOR TAXES	VALUATIONS BY SCHOOL DISTRICTS AS EQUALIZED BY DEPARTMENT OF TAXATION						Tax including State Homestead	State Tax on Non-Homestead	SPECIAL TAXES	TOTAL TAXES	PAID	WHEN PAID	Number of Receipt	March Settlement 1955	June Settlement 1955	Penalty	November Settlement 1955	Penalty	Collections to First Monday in January 1956	Penalty	Delinquent on First Monday in January 1956	Total Delinquent Tax and Penalty	REMARKS
	District No.	District No.	District No.	District No.	District No.	District No.																	
	Rate	Rate	Rate	Rate	Rate	Rate																	
	Mills	Mills	Mills	Mills	Mills	Mills																	

Interlachen Lodge, Inc. Glen's Point, Inc. Re-arrangement End of The Trail  
Glen's Point, Inc. Re-arrangement End of The Trail  
Glen's Point, Inc. Re-arrangement End of The Trail  
Glen's Point, Inc. Re-arrangement End of The Trail

Forfeited 11-15-55

66 cents cancelled

46

46 cents









Assessment Roll and Tax List of Real Property in the Town of Woodrow, Cass County, Minnesota

Form 30 (54)

Table with columns: IN WHOSE NAME ASSESSED, TO WHOM TRANSFERRED, DESCRIPTION OF PROPERTY, TRUE AND FULL VALUATIONS, ASSESSED VALUATIONS, and FINAL EQUALIZED VALUE.

Cass County, Minnesota, for Taxes for the Year 1954.

Table with columns: VALUATIONS BY SCHOOL DISTRICTS AS EQUALIZED BY DEPARTMENT OF TAXATION, SOLD FOR TAXES, SPECIAL TAXES, TOTAL TAXES, PAID, WHEN PAID, Number of Receipt, March Settlement 1955, June Settlement 1955, November Settlement 1955, Collections to First Monday in January 1956, Delinquent on First Monday in January 1956, Total Delinquent Tax and Penalty, REMARKS.



Assessment Roll and Tax List of Real Property in the Town of Woodrow

\*Indicate Type of Property: R-Residential, C-Commercial, I-Industrial, U-Utility, F-Farm

Form 5C (54) MILLER-GAYNE COMPANY, MINNEAPOLIS

Table with columns: IN WHOSE NAME ASSESSED, TO WHOM TRANSFERRED, DESCRIPTION OF PROPERTY, TRUE AND FULL VALUATIONS, ASSESSED VALUATIONS, FINAL EQUALIZED VALUE. Includes handwritten entries for 'Guy & Lillian Beardsley' and 'Re-Arrangement, End O' The Trail'.

Cass County, Minnesota, for Taxes for the Year 1954.

Table with columns: SOLD FOR TAXES, VALUATIONS BY SCHOOL DISTRICTS AS EQUALIZED BY DEPARTMENT OF TAXATION, Tax including State Homestead, SPECIAL TAXES, TOTAL TAXES, PAID, WHEN PAID, Number of Receipt, March Settlement 1955, June Settlement 1955, Penalty, November Settlement 1955, Collections to First Monday in January 1956, Delinquent on First Monday in January 1956, Total Delinquent Tax and Penalty, REMARKS. Includes handwritten entries for 'PAID IN FULL FEB 28 1955' and '3112'.

Assessment Roll and Tax List of Real Property in the Town of Woodrow, Cass County, Minnesota, for Taxes for the Year 1954.

Form SC (54) BILLS-BAYE COMPANY, MINNEAPOLIS

Table with columns: IN WHOSE NAME ASSESSED, TO WHOM TRANSFERRED, DESCRIPTION OF PROPERTY, TRUE AND FULL VALUATIONS, ASSESSED VALUATIONS, FINAL EQUALIZED VALUE.

Cass County, Minnesota, for Taxes for the Year 1954.

Table with columns: SOLD FOR TAXES, VALUATIONS BY SCHOOL DISTRICTS AS EQUALIZED BY DEPARTMENT OF TAXATION, TAX INCLUDING STATE HOMESTEAD, SPECIAL TAXES, TOTAL TAXES, PAID, WHEN PAID, Number of Receipt, March Settlement 1955, June Settlement 1955, November Settlement 1955, Penalty, Collections to First Monday in January 1956, Delinquent on First Monday in January 1956, Total Delinquent Tax and Penalty, REMARKS.

Assessment Roll and Tax List of Real Property in the Town of Woodrow,

\*Indicate Type of Property: R-Residential, C-Commercial, I-Industrial, U-Utility, F-Farm

Table with columns: IN WHOSE NAME ASSESSED, TO WHOM TRANSFERRED, DESCRIPTION OF PROPERTY, TRUE AND FULL VALUATIONS, ASSESSED VALUATIONS, FINAL EQUALIZED VALUE. Includes handwritten entries for 'The Arline F. Arthur' and 'State of Minnesota'.

Cass County, Minnesota, for Taxes for the Year 1954.

Table with columns: SOLD FOR TAXES, VALUATIONS BY SCHOOL DISTRICTS AS EQUALIZED BY DEPARTMENT OF TAXATION, Tax including State Homestead, SPECIAL TAXES, TOTAL TAXES, PAID, WHEN PAID, Number of Receipt, March Settlement 1955, June Settlement 1955, November Settlement 1955, Collections to First Monday in January 1956, Delinquent on First Monday in January 1956, Total Delinquent Tax and Penalty, REMARKS. Includes handwritten entries for 'PAID IN FULL MAY 1 2 1955' and '5628'.



Assessment Roll and Tax List of Real Property in the Town of Woodrow,

\*Indicate Type of Property: R-Residential, C-Commercial, I-Industrial, U-Utility, F-Farm

Cass County, Minnesota, for Taxes for the Year 1954.

Interlachen Lodge, Inc. End of The Trail 3rd Addn. Glen's Pond Re-arrangement End of The Trail Interlachen Lodge, Inc. End of The Trail Interlachen Lodge, Inc. End of The Trail Interlachen Lodge, Inc. End of The Trail

IN WHOSE NAME ASSESSED		TO WHOM TRANSFERRED		DESCRIPTION OF PROPERTY					TRUE AND FULL VALUATIONS				ASSESSED VALUATIONS					FINAL EQUALIZED VALUE	SOLD FOR TAXES	VALUATIONS BY SCHOOL DISTRICTS AS EQUALIZED BY DEPARTMENT OF TAXATION						Tax Including State Homestead	State Tax on Non-Homestead	SPECIAL TAXES	TOTAL TAXES	PAID	WHEN PAID	Number of Receipt	March Settlement 1955	June Settlement 1955	November Settlement 1955	Penalty	Collections to First Monday in January 1956	Penalty	Delinquent on First Monday in January 1956	Total Delinquent Tax and Penalty	REMARKS								
				Subdivision	Sec. or Lot	Town or Block	Ring	Number of Acres of Land	No. School District	Indicate Homestead Yes or No	Indicate Agricultural Yes or No	Indicate Type of Property	LAND	BUILDINGS	MACHINERY	TOTAL	RURAL		ALL OTHER		MACHINERY	TOTAL	Total Assessed Value as Equalized by the Board of Review							\$ cts.	\$ cts.	\$ cts.	\$ cts.																
													Dollars	Dollars	Dollars	Dollars	Dollars	Dollars	Dollars	Dollars	Dollars	Dollars	Dollars	Dollars	Dollars	Dollars	Dollars	Dollars	Dollars	Dollars	Dollars	District No. Rate						\$ cts.	\$ cts.	\$ cts.	\$ cts.								
				Acres	100ths			Acres									Up to \$4,000	Over \$4,000	Up to \$4,000	Over \$4,000	Permanently Attached to Real Estate		Dollars	No. Rate																									
State of Minnesota				Re-Arrangement, End of The Trail	1																																												
State of Minnesota					2																																												
State of Minnesota					3																																												
State of Minnesota					4																																												
State of Minnesota					5																																												
State of Minnesota					6																																												
Mrs. Arline P. Arthur					7																																												
"					8																																												
"					9																																												
"					10																																												
"					11																																												
"					12																																												
"					13																																												
"					14																																												
"					15																																												
"					16																																												
"					17																																												
"					18																																												
"					19																																												
"					20																																												
					20																																												
					20																																												

1.32 pane

Assessment Roll and Tax List of Real Property in the Town of Woodrow

Cass County, Minnesota, for Taxes for the Year 1954.

Table with columns: IN WHOSE NAME ASSESSED, TO WHOM TRANSFERRED, DESCRIPTION OF PROPERTY, TRUE AND FULL VALUATIONS, ASSESSED VALUATIONS, VALUATIONS BY SCHOOL DISTRICTS AS EQUALIZED BY DEPARTMENT OF TAXATION, SOLD FOR TAXES, PAID, WHEN PAID, Number of Receipt, March Settlement 1955, June Settlement 1955, Penalty, November Settlement 1955, Penalty, Collections to First Monday in January 1956, Penalty, Delinquent on First Monday in January 1956, Total Delinquent Tax and Penalty, REMARKS.

Mrs Arline P. Arthur

Re-Arrangement, End O' The Trail

5628

50

50 10

10

H 10

230

230

230

Assessment Roll and Tax List of Real Property in the Town of Woodrow

\*Indicate Type of Property: R-Residential, C-Commercial, I-Industrial, U-Utility, F-Farm

Table with columns: IN WHOSE NAME ASSESSED, TO WHOM TRANSFERRED, SUBDIVISION, TRUE AND FULL VALUATIONS (LAND, BUILDINGS, MACHINERY, TOTAL), ASSESSED VALUATIONS (RURAL, ALL OTHER, MACHINERY, TOTAL ASSESSED), Total Assessed Value, FINAL EQUALIZED VALUE. Includes entries for State of Minnesota from parcel 1 to 26.

Cass County, Minnesota, for Taxes for the Year 1954.

Table with columns: SOLD FOR TAXES, VALUATIONS BY SCHOOL DISTRICTS AS EQUALIZED BY DEPARTMENT OF TAXATION, Tax including State Homestead, State Tax on Non-Homestead, SPECIAL TAXES, TOTAL TAXES, PAID, WHEN PAID, Number of Receipt, March Settlement 1955, June Settlement 1955, November Settlement 1955, Collections to First Monday in January 1956, Delinquent on First Monday in January 1956, Total Delinquent Tax and Penalty, REMARKS. Includes entries for parcels 1 to 26.















Assessment Roll and Tax List of Real Property in the Town of Woodrow

\*Indicate Type of Property: R-Residential, C-Commercial, I-Industrial, U-Utility, F-Farm

Form 5C (54) MILLER-BAYNE COMPANY, MINNEAPOLIS

Table with columns: IN WHOSE NAME ASSESSED, TO WHOM TRANSFERRED, SUBDIVISION, TRUE AND FULL VALUATIONS, ASSESSED VALUATIONS, FINAL EQUALIZED VALUE.

Cass County, Minnesota, for Taxes for the Year 1954.

Table with columns: VALUATIONS BY SCHOOL DISTRICTS AS EQUALIZED BY DEPARTMENT OF TAXATION, TAX INCLUDING STATE HOMESTEAD, STATE TAX ON NON-HOMESTEAD, SPECIAL TAXES, TOTAL TAXES, PAID, WHEN PAID, Number of Receipt, March Settlement 1955, June Settlement 1955, Penalty, November Settlement 1955, Penalty, Collections to First Monday in January 1956, Penalty, Delinquent on First Monday in January 1956, Total Delinquent Tax and Penalty, REMARKS.

Assessment Roll and Tax List of Real Property in the Town of Woodrow

\*Indicate Type of Property: R-Residential, C-Commercial, I-Industrial, U-Utility, F-Farm

Cass County, Minnesota, for Taxes for the Year 1954.

Table with columns for IN WHOSE NAME ASSESSED, TO WHOM TRANSFERRED, DESCRIPTION OF PROPERTY, TRUE AND FULL VALUATIONS, ASSESSED VALUATIONS, VALUATIONS BY SCHOOL DISTRICTS AS EQUALIZED BY DEPARTMENT OF TAXATION, TAXES, PAID, WHEN PAID, Number of Receipt, March Settlement 1955, June Settlement 1955, November Settlement 1955, Collections to First Monday in January 1956, Delinquent on First Monday in January 1956, Total Delinquent Tax and Penalty, and REMARKS. Includes handwritten entries for 'Re-Arrangement, End O' The Trail' and 'Woodrow Sup.' with specific tax amounts and dates.

Assessment Roll and Tax List of Real Property in the Town of Woodrow,

\*Indicate Type of Property: R-Residential, C-Commercial, I-Industrial, U-Utility, F-Farm

Cass County, Minnesota, for Taxes for the Year 1954.

Form 50 (54) WILCO-DAY COMPANY, MINNEAPOLIS

IN WHOSE NAME ASSESSED	TO WHOM TRANSFERRED	SUBDIVISION	Sec. or Lot	Town or Block	Rng	Number of Acres of Land	No. School District	Indicate Homestead Yes or No	Indicate Agricultural Yes or No	Indicate Type of Property	TRUE AND FULL VALUATIONS			ASSESSED VALUATIONS					FINAL EQUALIZED VALUE	SOLD FOR TAXES	VALUATIONS BY SCHOOL DISTRICTS AS EQUALIZED BY DEPARTMENT OF TAXATION						Taxes including State Homestead	State Tax on Non-Homestead	SPECIAL TAXES	TOTAL TAXES	PAID	WHEN PAID	Number of Receipt	March Settlement 1955	June Settlement 1955	Penalty	November Settlement 1955	Penalty	Collections to First Monday in January 1956	Penalty	Delinquent on First Monday in January 1956	Total Delinquent Tax and Penalty	REMARKS										
											LAND Exclusive of Structures and Improvements	BUILDINGS and Other Structures	MACHINERY Permanently Attached to Real Estate	TOTAL True and Full Value	RURAL		ALL OTHER				MACHINERY Permanently Attached to Real Estate	TOTAL ASSESSED VALUE	Total Assessed Value as Equalized by the Board of Review	District No.	District No.	District No.																		District No.	District No.	District No.	District No.	District No.	District No.	Rate	Rate	Rate	Rate
State of Minnesota	Re-Arrangement, End O' The Trail																																																				
			426																																																		
State of Minnesota			5																																																		
State of Minnesota			6																																																		
State of Minnesota			7																																																		
State of Minnesota			8																																																		
State of Minnesota			9																																																		
State of Minnesota			10																																																		
State of Minnesota			11																																																		
State of Minnesota			12																																																		
State of Minnesota			13																																																		
State of Minnesota			14																																																		
State of Minnesota			15																																																		
State of Minnesota			16																																																		
State of Minnesota			17																																																		
State of Minnesota			18																																																		
State of Minnesota			19																																																		
State of Minnesota			20																																																		

Green  
Karle Day  
Tape Portage  
West's Brewery

Assessment Roll and Tax List of Real Property in the Town of Woodrow

\*Indicate Type of Property: R-Residential, C-Commercial, I-Industrial, U-Utility, F-Farm

Table with columns: IN WHOSE NAME ASSESSED, TO WHOM TRANSFERRED, DESCRIPTION OF PROPERTY, TRUE AND FULL VALUATIONS, ASSESSED VALUATIONS, FINAL EQUALIZED VALUE. Includes handwritten entries for Oline Biersdorf and Albert P. + Hazel C. Remsen.

Cass County, Minnesota, for Taxes for the Year 1954.

Table with columns: SOLD FOR TAXES, VALUATIONS BY SCHOOL DISTRICTS AS EQUALIZED BY DEPARTMENT OF TAXATION, Tax including State Homestead, State Tax on Non-Homestead, SPECIAL TAXES, TOTAL TAXES, PAID, WHEN PAID, Number of Receipt, March Settlement 1955, June Settlement 1955, Penalty, November Settlement 1955, Penalty, Collections to First Monday in January 1956, Delinquent on First Monday in January 1956, Total Delinquent Tax and Penalty, REMARKS. Includes handwritten entries for Oline Biersdorf and Albert P. + Hazel C. Remsen.

Assessment Roll and Tax List of Real Property in the Town of Woodrow

\*Indicate Type of Property: R-Residential, C-Commercial, I-Industrial, U-Utility, F-Farm

Form 5C (54) WILCOX-BAY COMPANY, MINNEAPOLIS

Table with columns: IN WHOSE NAME ASSESSED, TO WHOM TRANSFERRED, SUBDIVISION, DESCRIPTION OF PROPERTY, TRUE AND FULL VALUATIONS, ASSESSED VALUATIONS, FINAL EQUALIZED VALUE.

Cass County, Minnesota, for Taxes for the Year 1954.

Table with columns: SOLD FOR TAXES, VALUATIONS BY SCHOOL DISTRICTS AS EQUALIZED BY DEPARTMENT OF TAXATION, Tax including State Homestead, State Tax on Non-Homestead, SPECIAL TAXES, TOTAL TAXES, PAID, WHEN PAID, Number of Receipt, March Settlement 1955, June Settlement 1955, November Settlement 1955, Collections to First Monday in January 1956, Delinquent on First Monday in January 1956, Total Delinquent Tax and Penalty, REMARKS.

Vertical text on the left edge of the page, including 'Minne Teape Portage' and 'The Trail End Lodge'.

Vertical text on the right edge of the page, including 'Green Gables' and 'Hick's Northern'.

Assessment Roll and Tax List of Real Property in the Town of Woodrow

Form 50 (5-54) MINN. STATE PRINTING CO., MINNAPOLIS

\*Indicate Type of Property: R-Residential, C-Commercial, I-Industrial, U-Utility, F-Farm

Main table with columns for property description, valuations, taxes, and payment status. Includes handwritten entries for names like Fred Loar, Art + Emma Malmos, Stanley F. + Helen J. Merceid, Robert C. Mendel, Catherine + Ted D. Dyson, and Elmer M. + Elizabeth H. Flood. Includes summary rows at the bottom with totals like 465, 1355, 1850, 82, 480, 562, 1404, 256, 14270, 2292, 8542, 3436.

Vertical text on the left edge of the page, including "Minne Teape Portage" and other land-related identifiers.

Vertical text on the right edge of the page, including "Green Gables" and "Northwestern" related identifiers.

Assessment Roll and Tax List of Real Property in the Town of Woodrow, Indicate Type of Property: R-Residential, C-Commercial, I-Industrial, U-Utility, F-Farm

Form 50 (54) MILLER-DAY COMPANY, MINNEAPOLIS

Table with columns: IN WHOSE NAME ASSESSED, TO WHOM TRANSFERRED, SUBDIVISION, Description of Property, TRUE AND FULL VALUATIONS, ASSESSED VALUATIONS, FINAL EQUALIZED VALUE.

116 1061 1497 56 399 455

Cass County, Minnesota, for Taxes for the Year 1954.

Table with columns: VALUATIONS BY SCHOOL DISTRICTS AS EQUALIZED BY DEPARTMENT OF TAXATION, Tax including State Homestead, State Tax on Non-Homestead, SPECIAL TAXES, TOTAL TAXES, PAID, WHEN PAID, Number of Receipt, March Settlement, June Settlement, November Settlement, Collections to First Monday in January 1955, Delinquent on First Monday in January 1955, Total Delinquent Tax and Penalty, REMARKS.

56 399 455 11340 212 11552 356 10634 562



Assessment Roll and Tax List of Real Property in the Town of Woodrow,

\*Indicate Type of Property: R-Residential, C-Commercial, I-Industrial, U-Utility, F-Farm

Form 50 (54) MILLER-BAYNE COMPANY, MINNEAPOLIS

Table with columns: IN WHOSE NAME ASSESSED, TO WHOM TRANSFERRED, SUBDIVISION, DESCRIPTION OF PROPERTY, TRUE AND FULL VALUATIONS, ASSESSED VALUATIONS, FINAL EQUALIZED VALUE.

Cass County, Minnesota, for Taxes for the Year 1954.

Table with columns: SOLD FOR TAXES, VALUATIONS BY SCHOOL DISTRICTS AS EQUALIZED BY DEPARTMENT OF TAXATION, Tax including State Homestead, State Tax on Non-Homestead, SPECIAL TAXES, TOTAL TAXES, PAID, WHEN PAID, Number of Receipt, March Settlement 1955, June Settlement 1955, Penalty, November Settlement 1955, Collections to First Monday in January 1956, Delinquent on First Monday in January 1956, Total Delinquent Tax and Penalty, REMARKS.



Assessment Roll and Tax List of Real Property in the Town of Woodrow

\*Indicate Type of Property: R-Residential, C-Commercial, I-Industrial, U-Utility, F-Farm

Form 5C (54) MILLER-DAVIS COMPANY, MINNEAPOLIS

Table with columns: IN WHOSE NAME ASSESSED, TO WHOM TRANSFERRED, SUBDIVISION, DESCRIPTION OF PROPERTY, TRUE AND FULL VALUATIONS, ASSESSED VALUATIONS, FINAL EQUALIZED VALUE.

Table with columns: SOLD FOR TAXES, VALUATIONS BY SCHOOL DISTRICTS AS EQUALIZED BY DEPARTMENT OF TAXATION, Tax including State Homestead, SPECIAL TAXES, TOTAL TAXES, PAID, WHEN PAID, Number of Receipt, March Settlement 1955, June Settlement 1955, Penalty, November Settlement 1955, Penalty, Collections to First Monday in January 1956, Delinquent on First Monday in January 1956, Total Delinquent Tax and Penalty, REMARKS.

Vertical text on the left edge of the page, including 'Moccasin Point', 'Maple Bay', 'Hinne Teepe Portage', 'West Freery Heights'.

Vertical text on the right edge of the page, including 'Maple Cr. Ogema Point', 'Green Gables', 'Hindoo's Northern Dream'.

Assessment Roll and Tax List of Real Property in the Town of Woodrow,  
\*Indicate Type of Property: R-Residential, C-Commercial, I-Industrial, U-Utility, F-Farm

Form 50 (54) - JULY 1954 COMPANY, MINNAPOLIS

Table with columns: IN WHOSE NAME ASSESSED, TO WHOM TRANSFERRED, DESCRIPTION OF PROPERTY, TRUE AND FULL VALUATIONS, ASSESSED VALUATIONS, SOLD FOR TAXES, FINAL EQUALIZED VALUE. Includes entries for Archie C. & Leone M. West, H.A. & Florence Stainbrook, Catharine & Ted D. Dixon, Etta Pierard, Marwin C. & Blanche N. Stanwood.

Cass County, Minnesota, for Taxes for the Year 1954.

Table with columns: VALUATIONS BY SCHOOL DISTRICTS AS EQUALIZED BY DEPARTMENT OF TAXATION, TAX including State Homestead, State Tax on Non-Homestead, SPECIAL TAXES, TOTAL TAXES, PAID, WHEN PAID, Number of Receipt, March Settlement, June Settlement, Penalty, November Settlement, Penalty, Collections to First Monday in January 1956, Penalty, Delinquent on First Monday in January 1956, Total Delinquent Tax and Penalty, REMARKS. Includes tax amounts and payment dates.

Vertical text on the left edge: O'The Trail 3rd Addn., O'The Trail Rearrangement End O'The Trail, Moccasin Point, Minne Teepe Portage, West Breezy Heights, O'The Trail 2nd Addn., O'The Trail Lodge, Interl., End O'The Trail Rearrangement End O'The Trail, Moccasin Point, Maple Cr., Omega Point, Green Gables, Pico's Northern Dream, 188th St.

Vertical text on the right edge: Cedar Grove Beach, Maple Cr., Omega Point, Green Gables, Pico's Northern Dream, 188th St.

Assessment Roll and Tax List of Real Property in the Town of Wadena, Minnesota

Form 3C (54) MILLER-BLUM COMPANY, MINNEAPOLIS

\*Indicate Type of Property: R-Residential, C-Commercial, I-Industrial, U-Utility, F-Farm

Table with columns: IN WHOSE NAME ASSESSED, TO WHOM TRANSFERRED, DESCRIPTION OF PROPERTY, TRUE AND FULL VALUATIONS, ASSESSED VALUATIONS, FINAL EQUALIZED VALUE.

Cass County, Minnesota, for Taxes for the Year 1954.

Table with columns: SOLD FOR TAXES, VALUATIONS BY SCHOOL DISTRICTS AS EQUALIZED BY DEPARTMENT OF TAXATION, Tax including State Homestead, State Tax on Non-Homestead, SPECIAL TAXES, TOTAL TAXES, PAID, WHEN PAID, Number of Receipt, March Settlement 1955, June Settlement 1955, Penalty, November Settlement 1955, Collections to First Monday in January 1956, Delinquent on First Monday in January 1956, Total Delinquent Tax and Penalty, REMARKS.

Vertical text on the left edge of the page, including 'The Trail 3rd', 'The Trail 2nd', 'The Trail 1st', 'The Trail 4th', 'The Trail 5th', 'The Trail 6th', 'The Trail 7th', 'The Trail 8th', 'The Trail 9th', 'The Trail 10th', 'The Trail 11th', 'The Trail 12th', 'The Trail 13th', 'The Trail 14th', 'The Trail 15th', 'The Trail 16th', 'The Trail 17th', 'The Trail 18th', 'The Trail 19th', 'The Trail 20th'.

Vertical text on the right edge of the page, including 'The Trail 21st', 'The Trail 22nd', 'The Trail 23rd', 'The Trail 24th', 'The Trail 25th', 'The Trail 26th', 'The Trail 27th', 'The Trail 28th', 'The Trail 29th', 'The Trail 30th'.

Assessment Roll and Tax List of Real Property in the Town of Woodrow,

\*Indicate Type of Property: R-Residential, C-Commercial, I-Industrial, U-Utility, F-Farm

Form 50 (54) MILLER-DAVIS COMPANY, MINNEAPOLIS

IN WHOSE NAME ASSESSED	TO WHOM TRANSFERRED	DESCRIPTION OF PROPERTY				TRUE AND FULL VALUATIONS													FINAL EQUALIZED VALUE									
		SUBDIVISION	Sec. or Lot	Town or Block	Rng.	Number of Acres of Land	No. School District	Indicate Homesteaded Yes or No	Indicate Agricultural Yes or No	Indicate Type of Property	LAND Exclusive of Structures and Improvements	BUILDINGS and Other Structures	MACHINERY Permanently Attached to Real Estate	TOTAL True and Full Value	RURAL					ALL OTHER				MACHINERY Permanently Attached to Real Estate	TOTAL ASSESSED VALUE	Total Assessed Value as Equalized by the Board of Review		
															Acres		100ths			Homestead Up to \$4,000 20%	Over \$4,000 and Non-Homestead 33 1/3%	Homestead Up to \$4,000 25%	Over \$4,000 and Non-Homestead 40%				MACHINERY Permanently Attached to Real Estate 33 1/3%	TOTAL ASSESSED VALUE
															Dollars	Cts.	Dollars	Cts.										
Sigfred E Johnson		Cedar Grove Beach	1				No			30	102		132				44					44						
Fred J Wade + Eva B Wade			2							30			30				10					10						
"			3							30			30				10					10						
"			4							33	657		690				230					230						
"			5							30			30				10					10						
Albert W + Emily H Black			6							30	150		180				60					60						
Lawrence + Mary Cordes			7							30			30				10					10						
Geo H + Ruth M Peters			8							30			30				10					10						
"			9							30			30				10					10						
Ray E + Bernice Swanstrom			10							30	249		279				93					93						
Marion D + Cara E Morton			11							29	400		429				143					143						
George H + Ruth M Peters			12							30	99		129		6	33						39						
"			13							30	394		729		66	133						179						
Wallace S + Gladys M Costello			14							120	2295		2415		483							483						
Sigfred E Johnson			15							120			120				40					40						
George H + Ruth Peters			16							60	99		159		12	33						45						
			17																									
			18																									
			19																									
			20																									
										692	4750		5442		567	1369					1436							

Cass County, Minnesota, for Taxes for the Year 1954.

SOLD FOR TAXES	VALUATIONS BY SCHOOL DISTRICTS AS EQUALIZED BY DEPARTMENT OF TAXATION						Tax including State Homestead	State Tax on Non-Homestead	SPECIAL TAXES	TOTAL TAXES	PAID	WHEN PAID	Number of Receipt	March Settlement 1955	June Settlement 1955	Penalty	November Settlement 1955	Penalty	Collections to First Monday in January 1956	Penalty	Delinquent on First Monday in January 1956	Total Delinquent Tax and Penalty	REMARKS
	District No.	District No.	District No.	District No.	District No.	District No.																	
	Rate	Rate	Rate	Rate	Rate	Rate																	
	Mills	Mills	Mills	Mills	Mills	Mills																	
							5.22																
							10 08	22		10 30		PAID IN FULL MAY 31 1955	13078		10 30								
							2 30	06		2 36		PAID IN FULL APR 30 1955											
							2 30	06		2 36		PAID IN FULL APR 30 1955											
							52 72	120		53 92		PAID IN FULL APR 30 1955											
							2 30	06		2 36		PAID IN FULL APR 30 1955											
							12 76	32		14 08		PAID IN FULL MAY 31 1955	8700		14 08								
							2 30	06		2 36		PAID IN FULL MAR 22 1955	5042		2 36								
SOLD FOR TAXES							2 30	06		2 36		2nd Half Paid OCT 28 1955	14830		2 36								
SOLD FOR TAXES							2 30	06		2 36		1st Half Paid MAY 24 1955	5889										
							2 30	06		2 36		2nd Half Paid OCT 28 1955	14830										
							2 30	06		2 36		1st Half Paid MAY 24 1955	5889										
							23 18	48		23 66		PAID IN FULL MAY 31 1955	8701		23 66								
							35 64	74		36 38		PAID IN FULL MAR 22 1955	5043		36 38								
							9 72	18		9 90		2nd Half Paid OCT 28 1955											
							49 60	70		50 30		1st Half Paid MAY 24 1955	4830		30 10								
							120 36			120 36		PAID IN FULL FEB 14 1955	262	120 36									
							9 96	20		10 16		PAID IN FULL MAY 31 1955	13078		10 16								
							11 22	18		11 40		2nd Half Paid OCT 28 1955	14830		5 70								
												1st Half Paid MAY 24 1955	5889										



Assessment Roll and Tax List of Real Property in the Town of Woodrow

\*Indicate Type of Property: R-Residential, C-Commercial, I-Industrial, U-Utility, F-Farm

Form 5C (51) MILLER-SAYRE COMPANY, MINNEAPOLIS

Table with columns: IN WHOSE NAME ASSESSED, TO WHOM TRANSFERRED, SUBDIVISION, DESCRIPTION OF PROPERTY, TRU AND FULL VALUATIONS, ASSESSED VALUATIONS, FINAL EQUALIZED VALUE.

Cass County, Minnesota, for Taxes for the Year 1954.

Table with columns: VALUATIONS BY SCHOOL DISTRICTS AS EQUALIZED BY DEPARTMENT OF TAXATION, Tax including State Homestead, State Tax on Non-Homestead, SPECIAL TAXES, TOTAL TAXES, PAID, WHEN PAID, Number of Receipt, March Settlement, June Settlement, November Settlement, Penalty, Collections to First Monday in January 1956, Delinquent on First Monday in January 1956, Total Delinquent Tax and Penalty, REMARKS.



Assessment Roll and Tax List of Real Property in the Town of Woodrow

\*Indicate Type of Property: R-Residential, C-Commercial, I-Industrial, U-Utility, F-Farm

Form 5C (54) MILLER-DAVIS COMPANY, MINNEAPOLIS

Table with columns: IN WHOSE NAME ASSESSED, TO WHOM TRANSFERRED, SUBDIVISION, DESCRIPTION OF PROPERTY, TRUE AND FULL VALUATIONS, ASSESSED VALUATIONS, FINAL EQUALIZED VALUE.

Cass County, Minnesota, for Taxes for the Year 1954.

Table with columns: VALUATIONS BY SCHOOL DISTRICTS AS EQUALIZED BY DEPARTMENT OF TAXATION, Tax including State Homestead, State Tax on Non-Homestead, SPECIAL TAXES, TOTAL TAXES, PAID, WHEN PAID, Number of Receipt, March Settlement 1955, June Settlement 1955, November Settlement 1955, Collections to First Monday in January 1956, Delinquent on First Monday in January 1956, Total Delinquent Tax and Penalty, REMARKS.

Assessment Roll and Tax List of Real Property in the Town of Woodrow

\*Indicate Type of Property: R-Residential, C-Commercial, I-Industrial, U-Utility, F-Farm

Table with columns: IN WHOSE NAME ASSESSED, TO WHOM TRANSFERRED, SUBDIVISION, DESCRIPTION OF PROPERTY, TRUE AND FULL VALUATIONS (RURAL, ALL OTHER, MACHINERY), FINAL EQUALIZED VALUE.

Cass County, Minnesota, for Taxes for the Year 1954.

Table with columns: VALUATIONS BY SCHOOL DISTRICTS AS EQUALIZED BY DEPARTMENT OF TAXATION, Tax including State Homestead, State Tax on Non-Homestead, SPECIAL TAXES, TOTAL TAXES, PAID, WHEN PAID, Number of Receipt, March Settlement 1955, June Settlement 1955, November Settlement 1955, Collections to First Monday in January 1956, Delinquent on First Monday in January 1956, Total Delinquent Tax and Penalty, REMARKS.

Assessment Roll and Tax List of Real Property in the Town of Woodrow

Cass County, Minnesota, for Taxes for the Year 1954.

\*Indicate Type of Property: R-Residential, C-Commercial, I-Industrial, U-Utility, F-Farm

Table with columns for IN WHOSE NAME ASSESSED, TO WHOM TRANSFERRED, SUBDIVISION, TRUE AND FULL VALUATIONS (LAND, BUILDINGS, MACHINERY, TOTAL), ASSESSED VALUATIONS (RURAL, ALL OTHER, MACHINERY, TOTAL), FINAL EQUALIZED VALUE, VALUATIONS BY SCHOOL DISTRICTS, TAXES, PAID, WHEN PAID, Number of Receipt, March Settlement, June Settlement, November Settlement, Collections to First Monday in January 1956, Delinquent on First Monday in January 1956, Total Delinquent Tax and Penalty, REMARKS.

Interl... End of the Trail... Cedar Grove Beach... Maple Crest... Bay... Gables... Dream... Lodge... Heig... 2nd... Adm.

195 195 65 65  
91788 134756 226595 50400  
72449 134828 501 247 778 14 898 50927 167 65794

