

Assessment & Tax List - 1955
Wabedo

COLLECTIONS OF TAXES OF 1955

Town OF Wabedo

CASS COUNTY, MINNESOTA

FUNDS	MARCH SETTLEMENT 1955	JUNE SETTLEMENT 1955	NOV. SETTLEMENT 1955	Amount Collected from Nov. 1955 to First Monday in Jan. 1956	REDUCTIONS	Total Reductions and Collected	BALANCE UNCOLLECTED	ADDITIONS	Total Uncollected to First Monday in January, 1956
State—Non-Homestead, State—Homestead,	6912 5757	18281 17057	5082 5266	29 147					
County Revenue, County Road and Bridge, County Welfare, County Bond and Interest, <i>Court House</i>	40472 20243 71991 14406 2890	120043 60043 213557 42728 8571	37060 18537 65930 13191 2646	1036 518 1843 369 74					
Town Revenue, Town Road and Bridge, Town Drag, Town State Loan, <i>Phone</i>	6502 11270 1445 3179 3757	19286 33429 4286 4429 11143	5954 10320 1323 2911 3440	66 288 37 82 97					
School Local 1 Mill, School Special, School State Loan, Deficiency Tuition Transportation C.O.	1445 54431 57786 1561 21673	4285 101482 171428 4629 64286	1323 36780 52924 1429 19846	37 848 1480 40 555					
	325732	903943	283962	7646					

	SCHOOL DISTRICT NO.	LOCAL 1 MILL	SPECIAL	STATE LOAN	Deficiency	Transport.	C. O.	TOTALS
MARCH SETTLEMENT	9 Un. 12 Un.	168 1277	3363 51068		6726 57070	182 1379	2022 19157	12861 123945
	Totals	1445	54431		57786	1561	21673	136906
	9 Un. 12 Un.	3497 788	61945 31537		139880 31539	3777 852	52459 11827	268568 76542
JUNE SETTLEMENT	Totals	4285	101482		171428	4629	64286	346110
	9 Un. 12 Un.	807 516	16143 20637		32287 20637	872 557	12107 7739	62216 50086
	Totals	1323	36780		52924	1429	19846	112302
NOVEMBER SETTLEMENT	9 Un. 12 Un.	32 05	632 216		1264 216	34 06	474 81	2436 524
	Totals	37	848		1480	40	555	2960
	School District No.							
NOVEMBER to JANUARY	Totals							
	School District No.							
	Totals							
ADDITIONS	School District No.							
	Totals							
	School District No.							
REDUCTIONS	Totals							

or Ceased to be Homesteads

HOMESTEADS			
Sec. or Lot	Town or Block	Range	Number of Acres of Land
		Acres 100ths	

Wabedo Pass
 Wabedo Springs
 Wabedo Iowa Point
 Wabedo Addition

Assessment Roll and Tax List of Real Property in the Town of Wabedo, Cass County, Minnesota, for Taxes for the Year 1955.

Table with columns: IN WHOSE NAME ASSESSED, TO WHOM TRANSFERRED, DESCRIPTION OF PROPERTY, TRUE AND FULL VALUATIONS, ASSESSED VALUATIONS, VALUATIONS BY SCHOOL DISTRICTS AS EQUALIZED BY DEPARTMENT OF TAXATION, TAX INCLUDING STATE HOMESTEAD, SPECIAL TAXES, TOTAL TAXES, PAID, WHEN PAID, Number of Receipt, March Settlement 1956, June Settlement 1956, Penalty, November Settlement 1956, Penalty, Collections to First Monday in January 1957, Penalty, Delinquent on First Monday in January 1957, Total Delinquent Tax and Penalty, REMARKS.

Assessment Roll and Tax List of Real Property in the Town of Wahedo

*Indicate Type of Property: R-Residential, C-Commercial, I-Industrial, U-Utility, F-Farm

Cass County, Minnesota, for Taxes for the Year 1955.

Table with columns: IN WHOSE NAME ASSESSED, TO WHOM TRANSFERRED, DESCRIPTION OF PROPERTY, TRUE AND FULL VALUATIONS, ASSESSED VALUATIONS, VALUATIONS BY SCHOOL DISTRICTS AS EQUALIZED BY DEPARTMENT OF TAXATION, TAX INCLUDING STATE, SPECIAL TAXES, TOTAL TAXES, PAID, WHEN PAID, Number of Receipt, March Settlement, June Settlement, November Settlement, Collections to First Monday in January 1957, Delinquent on First Monday in January 1957, Total Delinquent Tax and Penalty, REMARKS.

Wahedo Pass

Wahedo Springs Chapel Iowa Point

Landers Addition

Assessment Roll and Tax List of Real Property in the Town of Wabedo

Form SCD (55) MILLER-DAY COMPANY, MINNEAPOLIS

*Indicate Type of Property: R-Residential, C-Commercial, I-Industrial, U-Utility, F-Farm

Table with columns: IN WHOSE NAME ASSESSED, TO WHOM TRANSFERRED, DESCRIPTION OF PROPERTY, TRUE AND FULL VALUATIONS, ASSESSED VALUATIONS, FINAL EQUALIZED VALUE.

Cass County, Minnesota, for Taxes for the Year 1955.

Table with columns: VALUATIONS BY SCHOOL DISTRICTS AS EQUALIZED BY DEPARTMENT OF TAXATION, Tax including State Homestead, State Tax on Non-Homestead, SPECIAL TAXES, TOTAL TAXES, PAID, WHEN PAID, Number of Receipt, March Settlement 1956, June Settlement 1956, November Settlement 1956, Collections to First Monday in January 1957, Delinquent on First Monday in January 1957, Total Delinquent Tax and Penalty, REMARKS.

Assessment Roll and Tax List of Real Property in the Town of Wabedo

*Indicate Type of Property: R-Residential, C-Commercial, I-Industrial, U-Utility, F-Farm

Form 5CD (55) HILLIS-DAY COMPANY, MINNEAPOLIS

Table with columns: IN WHOSE NAME ASSESSED, TO WHOM TRANSFERRED, DESCRIPTION OF PROPERTY, TRUE AND FULL VALUATIONS, ASSESSED VALUATIONS, and FINAL EQUALIZED VALUE. Includes handwritten entries for 'North Central Area Council of Young Men's Christian Assoc.' and '600 added assessment 1955 by Town Board'.

Cass County, Minnesota, for Taxes for the Year 1955.

Table with columns: SOLD FOR TAXES, VALUATIONS BY SCHOOL DISTRICTS AS EQUALIZED BY DEPARTMENT OF TAXATION, Tax including State Homestead, State Tax on Non-Homestead, SPECIAL TAXES, TOTAL TAXES, PAID, WHEN PAID, Number of Receipt, March Settlement 1956, June Settlement 1956, Penalty, November Settlement 1956, Collections to First Monday in January 1957, Delinquent on First Monday in January 1957, Total Delinquent Tax and Penalty, and REMARKS. Includes handwritten entries for 'PAID IN FULL MAY 31 1956' and '65934'.

Assessment Roll and Tax List of Real Property in the Town of Wahedo, Cass County, Minnesota, for Taxes for the Year 1955.

*Indicate Type of Property: R-Residential, C-Commercial, I-Industrial, U-Utility, F-Farm

Form 5CD (55) MILLS-RATE COMPANY, MINNEAPOLIS

Table with columns: IN WHOSE NAME ASSESSED, TO WHOM TRANSFERRED, DESCRIPTION OF PROPERTY, TRUE AND FULL VALUATIONS, ASSESSED VALUATIONS, and FINAL EQUALIZED VALUE. Includes handwritten entries for various lots and owners like Joseph B. & Lytle E. Harris, R.W. Fuller, and Wayne H. Mussen.

Cass County, Minnesota, for Taxes for the Year 1955.

Table with columns: VALUATIONS BY SCHOOL DISTRICTS AS EQUALIZED BY DEPARTMENT OF TAXATION, TAXES, PAID, WHEN PAID, Number of Receipt, March Settlement 1956, June Settlement 1956, Penalty, November Settlement 1956, Collections to First Monday in January 1957, Delinquent on First Monday in January 1957, Total Delinquent Tax and Penalty, and REMARKS. Includes handwritten tax amounts and payment dates.

Wahedo Pass, Wahedo Springs, Wahedo Iowa Point, Landers Addition

Assessment Roll and Tax List of Real Property in the Town of Wabedo, Cass County, Minnesota, for Taxes for the Year 1955.

Form SCD (55) MILLER-DAY COMPANY, MINNEAPOLIS

Table with columns: IN WHOSE NAME ASSESSED, TO WHOM TRANSFERRED, DESCRIPTION OF PROPERTY, TRUE AND FULL VALUATIONS, ASSESSED VALUATIONS, FINAL EQUALIZED VALUE. Includes handwritten entries for Albert Hughes, William S. Liskey, Navillus Band Co., M. S. Johnson, Erick & Karin Wikstrom, Adolph & Alma Nelson, Peter & Olga Zumbrenner, W. A. Clark, and Wm. S. Liskey.

Cass County, Minnesota, for Taxes for the Year 1955.

Table with columns: VALUATIONS BY SCHOOL DISTRICTS AS EQUALIZED BY DEPARTMENT OF TAXATION, Tax including State Homestead, State Tax on Non-Homestead, SPECIAL TAXES, TOTAL TAXES, PAID, WHEN PAID, Number of Receipt, March Settlement 1956, June Settlement 1956, November Settlement 1956, Collections to First Monday in January 1957, Delinquent on First Monday in January 1957, Total Delinquent Tax and Penalty, REMARKS. Includes handwritten entries for tax amounts and payment dates.

Wabedo Pass

Wabedo Springs, Cham, Iowa Point

Landers Addition

Assessment Roll and Tax List of Real Property in the Town of Wabedo, Cass County, Minnesota, for Taxes for the Year 1955.

Form 5CD (55) - MINNESOTA DEPARTMENT OF REVENUE

Table with columns: IN WHOSE NAME ASSESSED, TO WHOM TRANSFERRED, DESCRIPTION OF PROPERTY, TRUE AND FULL VALUATIONS (LAND, BUILDINGS, MACHINERY, TOTAL), ASSESSED VALUATIONS (RURAL, ALL OTHER, MACHINERY, TOTAL ASSESSED), FINAL EQUALIZED VALUE.

Cass County, Minnesota, for Taxes for the Year 1955.

Table with columns: SOLD FOR TAXES, VALUATIONS BY SCHOOL DISTRICTS AS EQUALIZED BY DEPARTMENT OF TAXATION, Tax including State Homestead, State Tax on Non-Homestead, SPECIAL TAXES, TOTAL TAXES, PAID, WHEN PAID, Number of Receipt, March Settlement 1956, June Settlement 1956, Penalty, November Settlement 1956, Penalty, Collections to First Monday in January 1957, Delinquent on First Monday in January 1957, Total Delinquent Tax and Penalty, REMARKS.

Wabedo Pass

Wabedo Springs Chapel Iowa Point

Handers Addition

Assessment Roll and Tax List of Real Property in the Town of Wahedo, Cass County, Minnesota, for Taxes for the Year 1955.

Cass County, Minnesota, for Taxes for the Year 1955.

Form SCD (55) - MILLER-DAY COMPANY, MINNEAPOLIS

*Indicate Type of Property: R-Residential, C-Commercial, I-Industrial, U-Utility, F-Farm

Table with columns: IN WHOSE NAME ASSESSED, TO WHOM TRANSFERRED, DESCRIPTION OF PROPERTY, TRUE AND FULL VALUATIONS, ASSESSED VALUATIONS, VALUATIONS BY SCHOOL DISTRICTS AS EQUALIZED BY DEPARTMENT OF TAXATION, TAXES, PAID, WHEN PAID, Number of Receipt, March Settlement 1956, June Settlement 1956, Penalty, November Settlement 1956, Penalty, Collections to First Monday in January 1957, Penalty, Delinquent on First Monday in January 1957, Total Delinquent Tax and Penalty, REMARKS.

Wahedo Pass

Wahedo Springs, Chapeau, Iowa Point

Landers Addition

Assessment Roll and Tax List of Real Property in the Town of Wabedo, Cass County, Minnesota, for Taxes for the Year 1955.

Form SCD (55) JULY 1954 COMPART, MINNEAPOLIS

*Indicate Type of Property: R-Residential, C-Commercial, I-Industrial, U-Utility, F-Farm

Table with columns: IN WHOSE NAME ASSESSED, TO WHOM TRANSFERRED, DESCRIPTION OF PROPERTY, TRUE AND FULL VALUATIONS, ASSESSED VALUATIONS, VALUATIONS BY SCHOOL DISTRICTS AS EQUALIZED BY DEPARTMENT OF TAXATION, TAXES, PAID, WHEN PAID, Number of Receipt, March Settlement 1956, June Settlement 1956, November Settlement 1956, Collections to First Monday in January 1957, Delinquent on First Monday in January 1957, Total Delinquent Tax and Penalty, REMARKS.

August Gordon

Joseph H. & Clara W. Keams
Earl E. & Winnie L. Chapman

Bert & Margret Allen

Howard & Verna Claussen

Willetta G. & Bernice I. Maile
Edward W. & Margie Munn

367

Wabedo Pass
Wabedo Springs
Chapman
Iowa Point
Landers Addition

Assessment Roll and Tax List of Real Property in the Town of Wabedo, Cass County, Minnesota

*Indicate Type of Property: R-Residential, C-Commercial, I-Industrial, U-Utility, F-Farm

Form SCD (55) - MARCH 1954 EDITION, MINNEAPOLIS

Table with columns: IN WHOSE NAME ASSESSED, TO WHOM TRANSFERRED, DESCRIPTION OF PROPERTY, TRUE AND FULL VALUATIONS, ASSESSED VALUATIONS, FINAL EQUALIZED VALUE.

Cass County, Minnesota, for Taxes for the Year 1955.

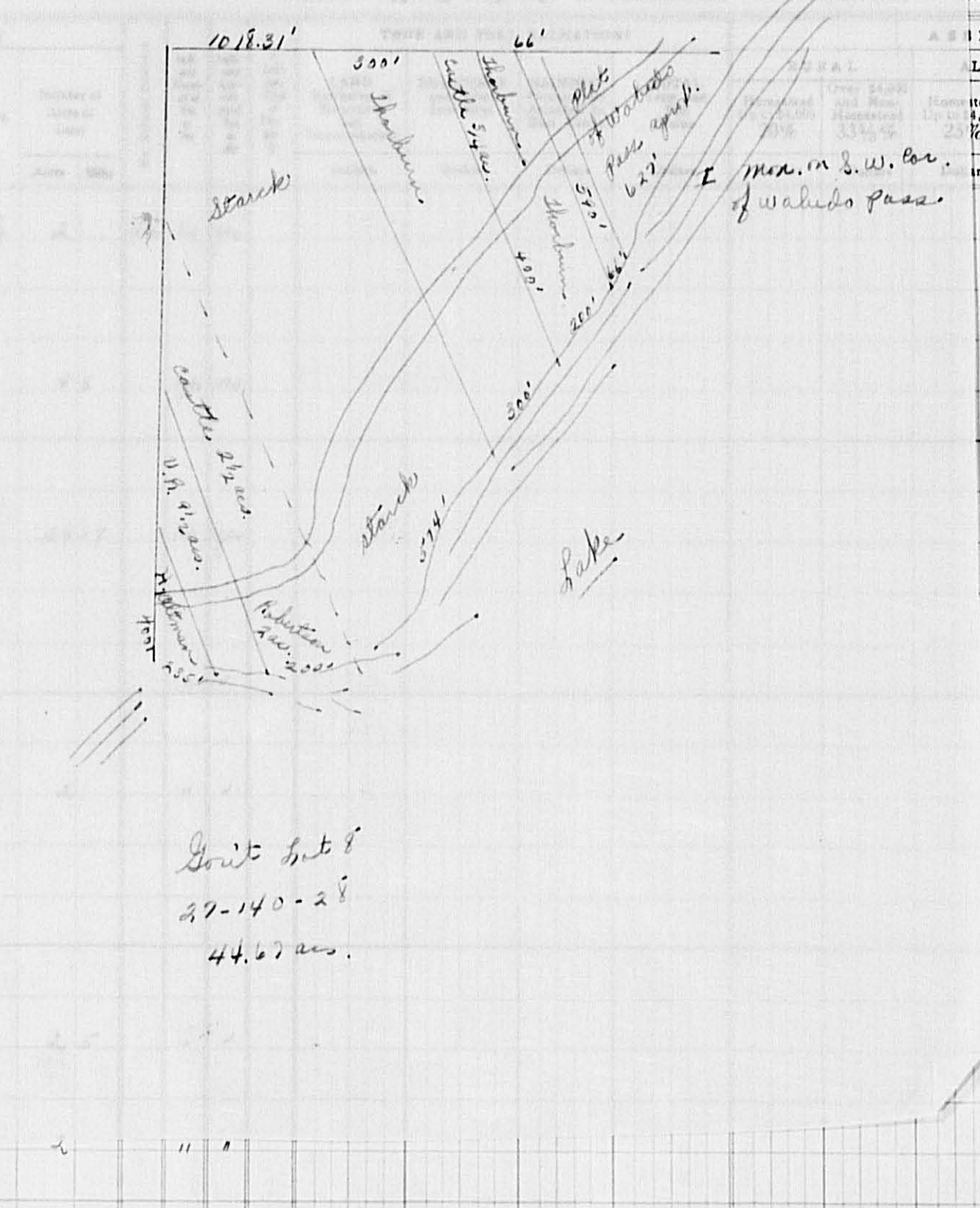
Table with columns: VALUATIONS BY SCHOOL DISTRICTS AS EQUALIZED BY DEPARTMENT OF TAXATION, TAXES, PAID, WHEN PAID, Number of Receipt, March Settlement 1956, June Settlement 1956, November Settlement 1956, Collections to First Monday in January 1957, Delinquent on First Monday in January 1957, Total Delinquent Tax and Penalty, REMARKS.

Wabedo Pass, Wabedo Springs, Chas. Iowa Point, Landers Addition

Assessment Roll and Tax List of Real Property in the Town of Wabedo, Minnesota, for Taxes for the Year 1955.

Form SCD (55) MILLER-DAY COMPANY, MINNEAPOLIS

IN WHOSE NAME ASSESSED	TO WHOM TRANSFERRED	DESCRIPTION OF PROPERTY	Sec. of Lot	Town or Block
Halvor Robberstad		Strip 200' wide of Lot 8 between lake and road and lying adjacent to and SW of a line parallel to and 1140' distant from SW line of lot 1, Plat of Wabedo Pass.	27	14
Verlantz & Robberstad		All that part of Lot 8 lying SW of a line which is parallel to and 1340' distant from SW line of Lot 1, Plat of Wabedo Pass. Less the W. 235' (about 2 acres) to Oltmans (9.5)	3	SW 1/4 of NE 1/4
Adolph E. & Effie S. Starck		A strip 374' wide to Lot 8 lying adjacent to and SW of extended line parallel to and 266' distant from SW line of Lot 1, Plat of Wabedo Pass, less E'ly 300' 29.17 Acs.	6	NE 1/4 of NW 1/4
Lloyd M. & Rose Thorburn		A strip 300' wide between lake & N. line of lot 8 & being parallel to & 266' from extended SW line of lot 1. Plat of Wabedo Pass.	8	SW 1/4 of NW 1/4
Lloyd M. & Rose Thorburn		Strip 200' wide of lot 8 lying between lake and road, and being parallel to and 66' from SW line of lot 1. Plat of Wabedo Pass, 1.39 acs. Strip 100' wide of lot 8 lying between road and north line of lot 8 and being parallel to and 66' from extended SW line of lot 1, Plat of Wabedo Pass. 6 acs.	11	SE 1/4 of SW 1/4
Wm. C. & Louis Lampman Birn Castle		Strip 100' wide of lot 8 lying between road and north line of lot 8 and being parallel to and 166' from extended SW line of lot 1, Plat of Wabedo Pass. Strip 200' wide of lot 8 between road and west line of Lot 8 and lying adjacent to and SW of an extended line parallel to and 1140' distant from SW line of Lot 1, Plat of Wabedo Pass.	17	
Harm Oltmans		The west 235' of Lot 8, 27-140-28 extended from Wabedo lake on the south and running north approximately 1400' to the pot hole, containing 2 acs. more or less.		



ASSESSED VALUATIONS				Total Assessed Value as Equalized by the Board of Review	FINAL EQUALIZED VALUE
ALL OTHER	MACHINERY Permanently Attached to Real Estate	TOTAL ASSESSED VALUE	Dollars		
Over \$4,000 and Non-Homestead 40%	33 1/3%		Dollars	Dollars	Dollars

47 17

Cass County, Minnesota, for Taxes for the Year 1955.

SOLD FOR TAXES	VALUATIONS BY SCHOOL DISTRICTS AS EQUALIZED BY DEPARTMENT OF TAXATION						Tax including State Homestead	State Tax on Non-Homestead	SPECIAL TAXES	TOTAL TAXES	PAID	WHEN PAID	Number of Receipt	March Settlement 1956	June Settlement 1956	Penalty	November Settlement 1956	Penalty	Collections to First Monday in January 1957	Penalty	Delinquent on First Monday in January 1957	Total Delinquent Tax and Penalty	REMARKS
	District No.	District No.	District No.	District No.	District No.	District No.																	
1						10	202	06	208	1	PAID IN FULL	MAY 31 1956	12886		208								
2																							
3																							
4						H 263	5864		5864	4	PAID IN FULL	MAY 31 1956	12886		5864								
5																							
6																							
7						97	1968	50	2018	7	PAID IN FULL	MAY 31 1956	12884		2018								
8																							
9																							
10						16	324	08	332	10	PAID IN FULL	MAY 31 1956	12883		332								
11																							
12						229	4648	118	4766	12	PAID IN FULL	MAY 31 1956	12883		4766								
13																							
14																							
15																							
16																							
17						20	406	10	416	17	PAID IN FULL	MAY 7 1956	5984		416								
18																							
19						287	5826	148	5974	19	PAID IN FULL	MAY 31 1956	12890		5974								
20						659	13374	340	13714	20					19578								

Wabedo Pass, Wabedo Springs, Chapin, Iowa Point, Landers Addition

Assessment Roll and Tax List of Real Property in the Town of Wahedo, Cass County, Minnesota

*Indicate Type of Property: R-Residential, C-Commercial, I-Industrial, U-Utility, F-Farm

Table with columns: IN WHOSE NAME ASSESSED, TO WHOM TRANSFERRED, DESCRIPTION OF PROPERTY, TRUE AND FULL VALUATIONS, ASSESSED VALUATIONS, FINAL EQUALIZED VALUE.

Cass County, Minnesota, for Taxes for the Year 1955.

Table with columns: SOLD FOR TAXES, VALUATIONS BY SCHOOL DISTRICTS AS EQUALIZED BY DEPARTMENT OF TAXATION, SPECIAL TAXES, TOTAL TAXES, PAID, WHEN PAID, Number of Receipt, March Settlement, June Settlement, November Settlement, Collections to First Monday in January, Delinquent on First Monday in January, Total Delinquent Tax and Penalty, REMARKS.

Wahedo Pass, Wahedo Springs, Wahedo, Iowa Point, Landers Addition

Assessment Roll and Tax List of Real Property in the Town of Wahedo, Cass County, Minnesota, for Taxes for the Year 1955.

Form SCD (55) BILLS-BAYNE COMPANY, MINNEAPOLIS

Table with columns: IN WHOSE NAME ASSESSED, TO WHOM TRANSFERRED, DESCRIPTION OF PROPERTY, TRUE AND FULL VALUATIONS, ASSESSED VALUATIONS, FINAL EQUALIZED VALUE. Includes handwritten entries for Merlin S. Pugh, Laura E. Minges, Guy C. & Elsie D. Konfeldt, Wm. C. & Geneva F. Speicher, Geo. & Pauline C. Reiland, Robert V. Minges, Franklin Transformer Co., and State of Minnesota.

Cass County, Minnesota, for Taxes for the Year 1955.

Table with columns: SOLD FOR TAXES, VALUATIONS BY SCHOOL DISTRICTS AS EQUALIZED BY DEPARTMENT OF TAXATION, Tax including State Homestead, State Tax on Non-Homestead, SPECIAL TAXES, TOTAL TAXES, PAID, WHEN PAID, Number of Receipt, March Settlement 1956, June Settlement 1956, Penalty, November Settlement 1956, Penalty, Collections to First Monday in January 1957, Penalty, Delinquent on First Monday in January 1957, Total Delinquent Tax and Penalty, REMARKS. Includes handwritten entries for Merlin S. Pugh, Laura E. Minges, Guy C. & Elsie D. Konfeldt, Wm. C. & Geneva F. Speicher, Geo. & Pauline C. Reiland, Robert V. Minges, Franklin Transformer Co., and State of Minnesota.

Wahedo Pass

Wahedo Springs Chapin Iowa Point

Henders Addition

Assessment Roll and Tax List of Real Property in the Town of Wabedo, *Indicate Type of Property: R-Residential, C-Commercial, I-Industrial, U-Utility, F-Farm

Form SCD (55) BILLS-BATH COMPANY, MINNEAPOLIS

Table with columns: IN WHOSE NAME ASSESSED, TO WHOM TRANSFERRED, DESCRIPTION OF PROPERTY, TRUE AND FULL VALUATIONS, ASSESSED VALUATIONS, FINAL EQUALIZED VALUE. Includes handwritten entries for Leona Milling Co, Harold L. & Norma J. Blakeman, Emil & Anna Polka, Arthur L. & Jennie C. Morrison, Roscoe & Sadie Murden, Joe J. & Blanche B. Roscoe, Harold C. & Fern Atwood, C. E. & Ruth M. Paulsen.

Cass County, Minnesota, for Taxes for the Year 1955.

Table with columns: VALUATIONS BY SCHOOL DISTRICTS AS EQUALIZED BY DEPARTMENT OF TAXATION, Tax including State Homestead, SPECIAL TAXES, TOTAL TAXES, PAID, WHEN PAID, Number of Receipt, March Settlement 1956, June Settlement 1956, November Settlement 1956, Collections to First Monday in January 1957, Delinquent on First Monday in January 1957, Total Delinquent Tax and Penalty, REMARKS. Includes handwritten entries for various districts and tax amounts.

Wabedo Pass, Wabedo Springs, Chapin, Iowa Point, Landers Addition

Assessment Roll and Tax List of Real Property in the Town of Wabedo, Cass County, Minnesota, for Taxes for the Year 1955.

Form SCD (55) HILLS-DAY COMPANY, MINNEAPOLIS

*Indicate Type of Property: R-Residential, C-Commercial, I-Industrial, U-Utility, F-Farm

Table with columns: IN WHOSE NAME ASSESSED, TO WHOM TRANSFERRED, DESCRIPTION OF PROPERTY, TRUE AND FULL VALUATIONS, ASSESSED VALUATIONS, FINAL EQUALIZED VALUE. Includes handwritten entries for Harry, Minnie B + Jane E. Engelhart, Earl S. + Beatrice E. Briggs, Anker B. + Margaret R. Harbo, etc.

Cass County, Minnesota, for Taxes for the Year 1955.

Table with columns: VALUATIONS BY SCHOOL DISTRICTS AS EQUALIZED BY DEPARTMENT OF TAXATION, Tax including State Homestead, SPECIAL TAXES, TOTAL TAXES, PAID, WHEN PAID, Number of Receipt, March Settlement 1956, June Settlement 1956, November Settlement 1956, Collections to First Monday in January 1957, Delinquent on First Monday in January 1957, Total Delinquent Tax and Penalty, REMARKS. Includes handwritten entries for Harry, Minnie B + Jane E. Engelhart, Earl S. + Beatrice E. Briggs, etc.

Wabedo Pass

Wabedo Springs

Chambers Addition

Wabedo Springs

Chambers Addition

Assessment Roll and Tax List of Real Property in the _____ of _____,
*Indicate Type of Property: R-Residential, C-Commercial, I-Industrial, U-Utility, F-Farm

Form SCD (55) MILLER-DAY COMPANY, MINNEAPOLIS

Table with columns: IN WHOSE NAME ASSESSED, TO WHOM TRANSFERRED, DESCRIPTION OF PROPERTY, TRUE AND FULL VALUATIONS, ASSESSED VALUATIONS, FINAL EQUALIZED VALUE.

Cass County, Minnesota, for Taxes for the Year 1955.

Table with columns: SOLD FOR TAXES, VALUATIONS BY SCHOOL DISTRICTS AS EQUALIZED BY DEPARTMENT OF TAXATION, SPECIAL TAXES, TOTAL TAXES, PAID, WHEN PAID, Number of Receipt, March Settlement, June Settlement, November Settlement, Collections to First Monday in January, Delinquent on First Monday in January, Total Delinquent Tax and Penalty, REMARKS.

Wabedo Pass

Wabedo Springs, Cham, Iowa Point

Landers Addition

Assessment Roll and Tax List of Real Property in the _____ of _____,
*Indicate Type of Property: R-Residential, C-Commercial, I-Industrial, U-Utility, F-Farm

Form SCD (55) JULY-1949 COMPANY, MINNEAPOLIS

Table with columns: IN WHOSE NAME ASSESSED, TO WHOM TRANSFERRED, DESCRIPTION OF PROPERTY (Subdivision, Acres, etc.), TRUE AND FULL VALUATIONS (Land, Buildings, Machinery, etc.), ASSESSED VALUATIONS (Rural, All Other, etc.), FINAL EQUALIZED VALUE.

Cass County, Minnesota, for Taxes for the Year 1955.

Table with columns: SOLD FOR TAXES, VALUATIONS BY SCHOOL DISTRICTS AS EQUALIZED BY DEPARTMENT OF TAXATION (District No., Rate, etc.), Tax including State Homestead, State Tax on Non-Homestead, SPECIAL TAXES, TOTAL TAXES, PAID, WHEN PAID, Number of Receipt, March Settlement 1956, June Settlement 1956, November Settlement 1956, Collections to First Monday in January 1957, Delinquent on First Monday in January 1957, Total Delinquent Tax and Penalty, REMARKS.

Wabedo Pass

Wabedo Springs, Chas. Iowa Point

Landers Addition

Assessment Roll and Tax List of Real Property in the Town of Wabedo, *Indicate Type of Property: R-Residential, C-Commercial, I-Industrial, U-Utility, F-Farm

Table with columns: IN WHOSE NAME ASSESSED, TO WHOM TRANSFERRED, DESCRIPTION OF PROPERTY, TRUE AND FULL VALUATIONS, ASSESSED VALUATIONS, FINAL EQUALIZED VALUE. Includes handwritten entries for J.E. Armstrong, James G. Armstrong, R.F. Andrews, D.B. Welker, etc.

Cass County, Minnesota, for Taxes for the Year 1955.

Table with columns: VALUATIONS BY SCHOOL DISTRICTS AS EQUALIZED BY DEPARTMENT OF TAXATION, Tax including State Homestead, SPECIAL TAXES, TOTAL TAXES, PAID, WHEN PAID, Number of Receipt, March Settlement 1956, June Settlement 1956, Penalty, November Settlement 1956, Collections to First Monday in January 1957, Delinquent on First Monday in January 1957, Total Delinquent Tax and Penalty, REMARKS. Includes handwritten entries for 1 PAID IN FULL FEB 27 1956, etc.

Wabedo Pass

Wabedo Springs, Chas. Iowa Point, Landers Addition

