

ASSESSMENT & TAX LIST

Wabedo

1943

INCREASE OR DECREASE in Value of Property Heretofore Assessed, by the Erection or Destruction of Buildings or Structures Thereon

Platted Property Assessed at 40 Per Cent of True and Full Value.
(Homesteads up to \$4,000 True and Full Value 25 Per Cent.)

Unplatted Property Assessed at 33 1/3 Per Cent of True and Full Value.
(Homesteads up to \$4,000 True and Full Value 20 Per Cent.)

FORM 3 MILLER-DAVIS COMPANY, MINNEAPOLIS

NAMES OF PROPERTY OWNERS	DESCRIPTION	Sec. or Lot	Town or Block	Rng.	True and Full Value of Structures worth more than \$100 each Dollars	KIND OF STRUCTURES	Assessed Value of Additional Structures Dollars	Reduction of Assessed Value on Account of Loss occasioned by Fire, Flood or otherwise Dollars

Real Property becoming subject to Taxation since last previous Assessment or Omitted from Assessment Rolls of previous years.
Assessor's Return of Taxable Real Property in the Town of Habdo, County of Cass, Minn., for the Year 1943.

Platted Property Assessed at 40 Per Cent of True and Full Value.
(Homesteads up to \$4,000 True and Full Value 25 Per Cent Class 3C.)

Unplatted Property Assessed at 33 1/3 Per Cent of True and Full Value.
(Homesteads up to \$4,000 True and Full Value 20 Per Cent Class 3B.)

FORM 3 1/2 MILLER-DAVIS COMPANY, MINNEAPOLIS

NAME OF OWNER	School District	DESCRIPTION OF PROPERTY				Indicate Homestead	ASSESSOR'S VALUATIONS					EQUALIZED VALUATIONS				
		Sec. or Lot	Twp. or Range	Number of Acres of Land Acres 100ths			True and Full Value of Land Exclusive of Structures and Improvements Dollars	STRUCTURES & IMPROVEMENTS True and Full Value of Buildings and Other Structures Dollars	True and Full Value of Machinery Permanently Attached to Real Estate Dollars	Total True and Full Value of Land Including all Structures, Improvements and Machinery Dollars	Assessed Value of Homesteads up to \$4,000 at 20% Class 3B Dollars	Assessed Value of Remainder at 33 1/3 per cent Class 4 Dollars	Total Assessed Value of Land Including all Structures, Improvements and Machinery Dollars	Total Assessed Value as Equalized by Board of Review Dollars	Total Assessed Value as Equalized by County Board Dollars	Total Assessed Value as Equalized by the Department of Taxation Dollars
August Gordon	Un.			26 140 28	20	H.	300			300	60		60			
Cont. to G.R. McClintock				27	37 25	77 1/2	447			447		149	149			

Resub in

Habdo Cass
Little Boy Lake
Habdo Springs

Assessor's

FORM 316

NAME OF OWNER

Treasurer's Office, Cass County, Minnesota

RECEIVED this, the first Monday (being the 3rd day) of January,
 A. D. 1944, of L. G. Peterson, Auditor of said County, Minnesota,
 the Tax List of all Taxable Real and Personal Property in the Township
 of Wabedo in said County for the year A. D. 1943,
 as specified above and amounting to six thousand six hundred
 eighteen 9/100 dollars.
 W. J. McKeown
 County Treasurer.

Office of County Treasurer, Cass County, Minnesota

To L. G. Peterson, County Auditor:
 Sir:—I herewith return to you the Tax List for the Township
 of Wabedo in said County for the year 1943, heretofore
 received from you. I certify that I have compared the same with the duplicate receipts in
 your office, and have written opposite the amount of each tax so received the words "First
 Quarter Paid", "Second Quarter Paid", "Third Quarter Paid" or "Paid in full" as the
 case may be, and the number of my receipt given in discharge of said tax, and each tract
 or lot of real property against which the taxes remain unpaid is delinquent for said year.
 Yours respectfully,
 W. J. McKeown
 County Treasurer.

Auditor's Office, Cass County, Minnesota

I, _____ Auditor of said County, and State
 of Minnesota, do hereby certify that the following is a correct list of the Taxes levied on the
 Real and Personal Property in the _____ of _____
 for the year 1943.
 WITNESS my hand and official seal, the _____ day of _____
 1944.

 County Auditor.

Auditor's Office, Cass County, Minnesota

I hereby certify that on the first Monday in January 1945, I received of _____
 _____ County Treasurer, the Tax List of the _____
 of _____ in said
 County for the year 1943; that I have compared the said list with the Statements received
 for by said Treasurer, which are on file in my office, and that each tract or lot of real
 property therein against which the taxes, or any part thereof, remains unpaid are delin-
 quent for said year.

 County Auditor.

NAME OF OWNER

TABULAR SCHEDULE OF VALUATIONS,

LEVIED IN THE Township OF Habeo

RATES AND TAXES

COUNTY OF CASS, STATE OF MINNESOTA

School District No.	VALUATION BY SCHOOL DISTRICTS					RATE OF STATE TAXES					RATE OF COUNTY TAXES					RATE OF TOWN TAXES						
	Valuation of Money and Credits Dollars	Value of Land other than Town Lots including Structures Dollars	Value of Town and City Lots including Structures thereon Dollars	Personal Property Dollars	Total Value of all Property except Money and Credits Dollars	State Rev. Mills	State Sch'l Mills	Tchr. Ins. Mills	State Debt Mills	Total Rate of State Tax Mills	Rev. Mills	R. & B. Mills	Welfare Mills	Bonds and Int. Mills	Sever. Mills	Total Rate of County Tax Mills	Rev. Mills	R. & B. Mills	Drag Tax Mills	State Loan Mills	Fire Patrol Mills	Total Rate of Town Tax Mills
Un.		31665	2603	6030	40298					71.12	21.7	4.5	35.2	17.4	1.6	81.4	5.	10.	1.	1.	5.	22.
		31665	2603	6030	40298					5.4												

RATE OF SCHOOL TAXES										TAXES LEVIED									
LOCAL 1 MILL AND SPECIAL SCHOOL TAXES BY DISTRICTS										ALL OTHER TAXES									
Local 1 Mill	Special	State Loan	Def.	C.O.	B. & I.	Total Rate of Sch'l Tax	Total Rate of all Taxes	Local 1 Mill	Special	State Loan	Def.	C.O.	B. & I.	Total School Taxes	FUNDS	Rate	Amounts		
1.1	20.	10.	10.	8.	3.	57.	156.6	3167	63330	31665	31665	25332	9500	164659	State Revenue,				
1.1	40.	10.	10.	8.	3.	77.	176.6	863	34532	8633	8633	8906	2590	62157	State School,				
															Teachers Insurance,				
															State Debt—Non-Homestead,		13574		
															State Debt—Homestead,		4836		
															County Revenue,		87443		
															County Road and Bridge,		18130		
															County Welfare,		141845		
															Bonds and Interest		78174		
															sewer		2414		
															Town Revenue,		20145		
															Town Road and Bridge,		40294		
															Town Drag,		4026		
															Town State Loan,		4026		
															Fire Patrol		20145		
															School Local 1 Mill,		4030		
															School Special,		97862		
															School State Loan,		40298		
															Delinquent Capital Outlay		40298		
															B. & I.		32238		
															Money and Credits,		12090		
																	226816		
																	661868		

Total Number of Acres 8663.53 }
 State of Minnesota, } ss.
 COUNTY OF CASS
 Auditor of said County and State of Minnesota, do hereby certify that the foregoing is a true and correct Schedule, showing the valuation of all the taxable property, in the Township of Habeo, in said County, the several rates of Taxation and Totals of the several Tax Funds levied thereon for the year A. D. 1943.
 Witness my hand and official seal, this DEC 31 1943 day of December, A. D. 1943.
L. C. Peterson County Auditor.



1706
1808

156.6
160.6

Assessor's

COLLECTIONS OF TAXES OF 1943, Township Wabedo OF Wabedo, CASS COUNTY, MINNESOTA

FORM 316

NAME OF OWNER

FUNDS	MARCH SETTLEMENT 1943	JUNE SETTLEMENT 1943	NOV. SETTLEMENT 1943	Amount Collected from Nov. 19, 43 to First Monday in Jan. 1944	REDUCTIONS	Total Reductions and Cancellations	BALANCE UNCOLLECTED	ADDITIONS	Total Uncollected to First Monday in January, 1944
State Revenue, State School, Teachers Insurance, State Debt—Non-Homestead, State Debt—Homestead,	2228 724	5954 2251	1556 624	316 90					
County Revenue, County Road and Bridge, County Welfare, County Bond and Interest, <u>sewer</u>	13096 2716 21244 11708 362	40709 8442 66035 36374 1126	11285 2390 18305 10089 312	1642 341 2664 1468 45					
Town Revenue, Town Road and Bridge, Town Drag, Town State Loan, <u>fire</u>	3018 6035 604 604 3018	9380 18760 1876 1876 9380	2600 5200 520 520 2600	378 757 76 76 378					
School Local 1 Mill, School Special, School State Loan, <u>Deficiency</u> <u>G.O.</u> <u>B.D.</u>	602 17682 6035 6035 4828 1811	1876 40994 18759 18759 15008 5628	520 10567 5200 5200 4161 1560	76 1513 757 757 605 227					
Money and Credits,									
	102350	303207	83154	13166	74008	21853		2279	67409

	SCHOOL DISTRICT NO.	LOCAL 1 MILL	SPECIAL	STATE LOAN	Deficiency	G.O.	B.D.	TOTALS
MARCH SETTLEMENT	Un.	322 280	6458 11224	3229 2806	5229 2806	2583 2242	969 842	16790 20202
	Totals	602	17682	6035	6035	4828	1811	26973
JUNE SETTLEMENT	Un.	1702 174	34046 6948	17023 1736	17022 1737	12618 1390	5107 521	88518 12506
	Totals	1876	40994	18759	18759	15008	5628	101024
NOVEMBER SETTLEMENT								
	Totals							
NOVEMBER to JANUARY	Un.	76	1513	757	757	605	227	3935
	Totals							3935
ADDITIONS								
	Totals							
REDUCTIONS								
	Totals							

Assessment Roll and Tax List of Unplatted Real Property in the Town of Habelo, Unplatted Real Estate Assessed at 33 1/2 Per Cent of True and Full Value; Attached Machinery at 33 1/2 Per Cent of True and Full Value, Homesteads, up to True and Full Value of \$4000, Assessable at 20 per Cent, Class 3B; Remainder at 33 1/2 Per Cent, Class 3.

Form 4 CD HALL-DAVIS COMPANY, MINNEAPOLIS

Table with columns: IN WHOSE NAME ASSESSED, TO WHOM TRANSFERRED, DESCRIPTION OF PROPERTY, ASSESSOR'S VALUATION, EQUALIZED VALUES, VALUATIONS BY SCHOOL DISTRICTS AS EQUALIZED BY DEPARTMENT OF TAXATION, Rate and Tax Less Homestead Exemption, State Tax on Non-Homestead, TOTAL GENERAL TAX, SPECIAL TAXES, TOTAL TAXES, PAID, WHEN PAID, Number of Receipt, March Settlement 1944, June Settlement 1944, Penalty, November Settlement 1944, Collections to First Monday in January 1945, Delinquent on First Monday in January 1945, Total Delinquent Tax and Penalty, REMARKS.

Nellie E. Haddix

Lloyd H. Showalter

Nellie E. Haddix

Bess Dorothy G. Olin

Nellie E. Haddix

Silas E. Showalter

John C. Ford

916 1008

916

SOLD FOR TAXES

Habelo Cass Little Boy Lake Hutchinson Add'n Iowa Springs

Assessment Roll and Tax List of Unplatted Real Property in the _____ of _____, Unplatted Real Estate Assessed at 33 1/2 Per Cent of True and Full Value; Attached Machinery at 33 1/2 Per Cent of True and Full Value, Homesteads, up to True and Full Value of \$4000, Assessable at 20 per Cent, Class 3B; Remainder at 33 1/2 Per Cent, Class 3.

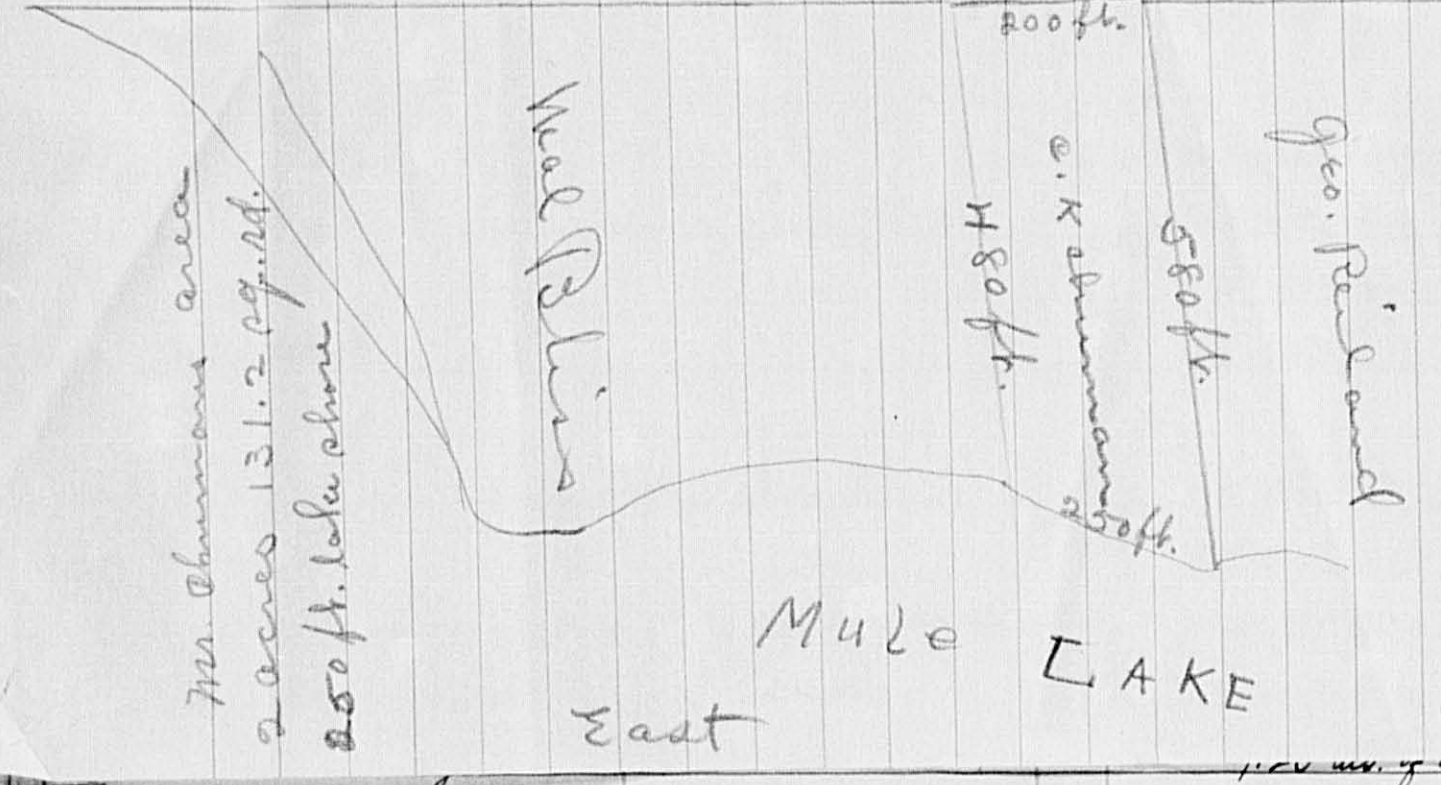
Form 4 CD WALKER-BAYNE COMPANY, MINNEAPOLIS

Table with columns: IN WHOSE NAME ASSESSED, TO WHOM TRANSFERRED, DESCRIPTION OF PROPERTY, ASSESSOR'S VALUATION, EQUALIZED VALUES, SOLD FOR TAXES. Includes handwritten entries for Hugh H. Mercer E. O. Olson and Grace E. Polk.

Cass County, Minnesota, for Taxes for the Year 1943.

Table with columns: VALUATIONS BY SCHOOL DISTRICTS AS EQUALIZED BY DEPARTMENT OF TAXATION, Rate and Tax Less Homestead Exemption, State Tax on Non-Homestead, TOTAL GENERAL TAX, SPECIAL TAXES, PAID, WHEN PAID, Number of Receipt, March Settlement 1944, June Settlement 1944, November Settlement 1944, Collections to First Monday in January 1945, Delinquent on First Monday in January 1945, Total Delinquent Tax and Penalty, REMARKS. Includes handwritten entries for tax payments and amounts.

Town of Woodrow 710



State of Minnesota	11	NE 1/4 of SW 1/4
State of Minnesota (Cont to J. L. McLary)	12	NW 1/4 of SW 1/4
J. L. McLary	13	SW 1/4 of SW 1/4 - 6
State of Minnesota	14	SE 1/4 of SW 1/4 - 7
State of Minnesota	15	
State of Minnesota	16	NE 1/4 of SE 1/4
State of Minnesota	17	NW 1/4 of SE 1/4
State of Minnesota	18	SW 1/4 of SE 1/4 - 8
State of Minnesota	19	SE 1/4 of SE 1/4
Harold V. & Eleanor J. Piro	20	N. 9 acs. of Lot 4

Platted R
Machinery at 33 1/2%
C. K. Chuman
2960 Calif. St. Omaha, Neb.

Starting at a point approx. 1200 feet N. of the M. C. for the S.W. corner of Govt. lot 2 sec. 30 T. 140 R. 28 W. run N. 76 3/4° E. (Mag. Br.) a distance of approx. 580 ft. to the shore of Mule Lake, thence S.W. westerly along said shore, a distance of approx. 480 ft. to west Sec. line of said lot 2, thence 200 feet north on said Sec line to point of beginning.

3 ac.
Tax value \$39
Sketch attached
9
25x65

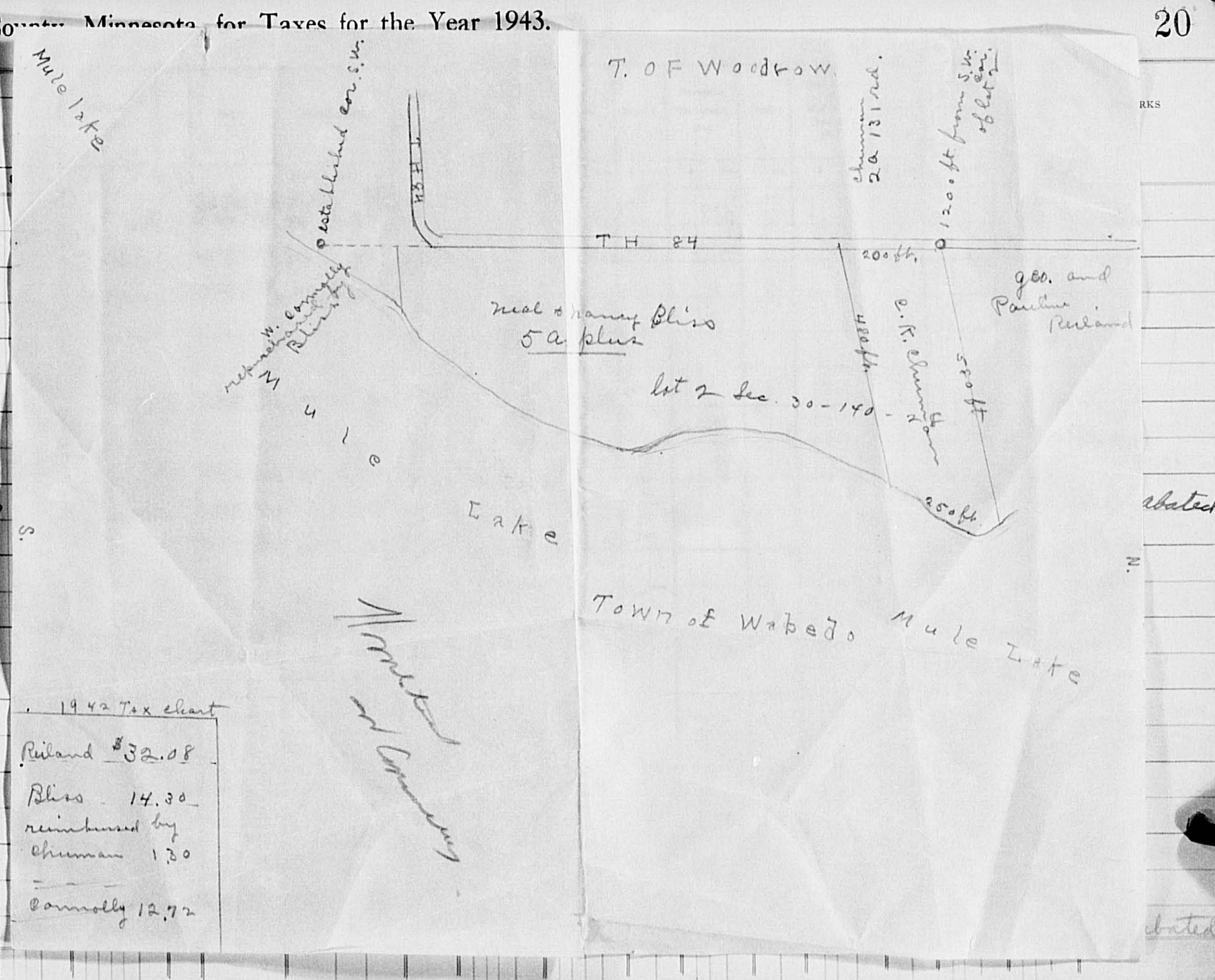
C. K. Chuman
2 acres 131.2 sq. ft. Omaha, Neb.

Starting at a point approx. 1200 feet N. of the M. C. for the S.W. cor. of Govt. lot 2 sec. 30 T. 140 R. 28 W. run N. 76 3/4° E. (Mag. Br.) a distance of approx. 580 feet to the shore of Mule Lake, thence S. westerly approx. along said shore a distance of 200 ft. thence westerly approx. 480 feet to west. Sec line of said lot 2, thence 200 ft. N. on said Sec line to point of beginning.

3 ac.
Tax value \$39
Sketch attached
9
25x65

VALUATIONS BY SCHOOL DISTRICTS AS EQUALIZED BY DEPARTMENT OF TAXATION				Rate and Tax Less Homestead	State Tax on Non-Homestead	TOTAL GENERAL	SPECIAL TAXES	
District No.	Rate	District No.	Rate					
1	108							
2	100							
3	103							
4								
5								
6	69							
7								
8	73							
9	76							
10	65							
11								
12	43			674	18			
13	184			2882	78			
14								
15								
16								
17								
18								
19								
20	39			610	16			
H	65							
NH	846			14266	356			
	911							

Assessor:
DEAR SIR:
Please divide the true & full valuation between the following descriptions (formerly assessed as one description) & indicate Homestead where required:
30-140-28 Unorganized Oscar Nelson Lot 1 except 1/2 acre land Bldg #21 (15 acres)
Freda Norman Ecker That part E. of N. 1/4 S. quarter line Lot 1 (1.5 acres)
Former True & Full Land #232 Bldg #150
Yours very truly,
L. C. PETERSON,
County Auditor, Cass County, Minn.



Assessment Roll and Tax List of Unplatted Real Property in the of Cass County, Minnesota, for Taxes for the Year 1943.

Cass County, Minnesota, for Taxes for the Year 1943.

Form 4 CD

Table with columns: IN WHOSE NAME ASSESSED, TO WHOM TRANSFERRED, DESCRIPTION OF PROPERTY, ASSESSOR'S VALUATION, EQUALIZED VALUES, VALUATIONS BY SCHOOL DISTRICTS AS EQUALIZED BY DEPARTMENT OF TAXATION, Rate and Tax Less Homestead Exemption, State Tax on Non-Homestead, TOTAL GENERAL TAX, SPECIAL TAXES, TOTAL TAXES, PAID, WHEN PAID, Number of Receipt, March Settlement 1944, June Settlement 1944, Penalty, November Settlement 1944, Penalty, Collections to First Monday in January 1945, Penalty, Delinquent on First Monday in January 1945, Total Delinquent Tax and Penalty, REMARKS.

State of Minnesota 1 N E 1/4 of N E 1/4 23 140 28 un.
State of Minnesota 2 N W 1/4 of N E 1/4
State of Minnesota 3 S W 1/4 of N E 1/4
State of Minnesota 4 S E 1/4 of N E 1/4
George Peterson Carl R. Johnson 5 5 1/2 of N 1/2 of Lot 3 10
Hugh V. Mercer 6 N E 1/4 of N W 1/4 Lot 1 43 75
David A. Johnson 7 N W 1/4 of N W 1/4
8 S W 1/4 of N W 1/4 " 2 38 75
State of Minnesota 9 S E 1/4 of N W 1/4
August Gordon 10 W 1/2 of SW 1/4 of SW 1/4 (or W 1/2 of Lot 4) less 20' on N edge 17 47
State of Minnesota 11 N E 1/4 of S W 1/4
George Peterson C. R. Johnson 12 N 1/2 of N 1/2 of Lot 3 10
Ole Mable 13 S W 1/4 of S W 1/4 of W 1/2 of Lot 4 18 53
Bernard J. Sweeney, Willetta A. Bernice F. Mable, L. J. Victor 14 S E 1/4 of S W 1/4 Lot 5 38 25
Carl R. Johnson 15 N 1/2 of S 1/4 of Lot 3 10
State of Minnesota 16 N E 1/4 of S E 1/4
State of Minnesota 17 N W 1/4 of S E 1/4
Bernard J. Sweeney, Willetta A. Bernice F. Mable, L. J. Victor 18 S W 1/4 of S E 1/4 40
State of Minnesota 19 S E 1/4 of S E 1/4
State of Minnesota 20 S 1/2 of S 1/2 of Lot 3 9 226 75 C. R. Johnson.

SOLD FOR TAXES

Abatement # 2389

Abatement # 2389

9.86 abated

6.86 abated

16.72 over 16.72 abated

12.14

Assessment Roll and Tax List of Unplatted Real Property in the _____ of _____, Unplatted Real Estate Assessed at 33 1/3 Per Cent of True and Full Value; Attached Machinery at 33 1/3 Per Cent of True and Full Value, Homesteads, up to True and Full Value of \$4000, Assessable at 20 per Cent, Class 3B; Remainder at 33 1/3 Per Cent, Class 3.

Form 4 CD HALLS-DAY COMPANY, MINNEAPOLIS

Table with columns: IN WHOSE NAME ASSESSED, TO WHOM TRANSFERRED, DESCRIPTION OF PROPERTY, ASSESSOR'S VALUATION, EQUALIZED VALUES, VALUATIONS BY SCHOOL DISTRICTS AS EQUALIZED BY DEPARTMENT OF TAXATION, Rate and Tax Less Homestead Exemption, State Tax on Non-Homestead, TOTAL GENERAL TAX, SPECIAL TAXES, TOTAL TAXES, PAID, WHEN PAID, Number of Receipt, March Settlement 1944, June Settlement 1944, November Settlement 1944, Collections to First Monday in January 1945, Delinquent on First Monday in January 1945, Total Delinquent Tax and Penalty, REMARKS.

State of Minnesota

State of Minnesota

State of Minnesota

State of Minnesota

State of Minnesota

State of Minnesota

State of Minnesota

State of Minnesota

State of Minnesota

State of Minnesota

State of Minnesota

State of Minnesota

State of Minnesota

State of Minnesota

State of Minnesota

Hebeo Pass

Winhouse Add'n Little Boy Lake

Springs

Town Point

Assessment Roll and Tax List of Unplatted Real Property in the _____ of _____, Minnesota, for Taxes for the Year 1943.

Form 4 CD HILLS-BAY COMPANY, MINNEAPOLIS

Table with columns: IN WHOSE NAME ASSESSED, TO WHOM TRANSFERRED, DESCRIPTION OF PROPERTY, ASSESSOR'S VALUATION, EQUALIZED VALUES, VALUATIONS BY SCHOOL DISTRICTS AS EQUALIZED BY DEPARTMENT OF TAXATION, Rate and Tax Less Homestead Exemption, State Tax on Non-Homestead, TOTAL GENERAL TAX, SPECIAL TAXES, TOTAL TAXES, PAID, WHEN PAID, Number of Receipt, March Settlement 1944, June Settlement 1944, November Settlement 1944, Collections to First Monday in January 1945, Delinquent on First Monday in January 1945, Total Delinquent Tax and Penalty, REMARKS.

State of Minnesota J.M.C. + Louise O. Lampman

State of Minnesota

G.A. Lincoln

Geo. + Stella Lincoln

B.E. Wideman

L.J. Kolberg

State of Minnesota Darwin E. + Fred W. Gray

Geo. + Stella Lincoln

35450

SOLD FOR TAXES Abate #2094

SOLD FOR TAXES " 2094

SOLD FOR TAXES " 2094

SOLD FOR TAXES " 2094

SOLD FOR TAXES

81

1050

1131

17912

444

18156

6.90 abated

7.72 "

5.16 "

5.16 "

2494 abated

Form 4 CD WALKER-BAYNE COMPANY, MINNEAPOLIS

IN WHOSE NAME ASSESSED	TO WHOM TRANSFERRED	DESCRIPTION OF PROPERTY				No. School District	Indicate Homestead	ASSESSOR'S VALUATION						EQUALIZED VALUES			SOLD FOR TAXES		
		SUBDIVISION	Sec. or Lot	Town or Block	Range			Number of Acres of Land	True and Full Value of Lands Exclusive of Structures and Improvements	STRUCTURES & IMPROVEMENTS		Total True and Full Value of Lands Including all Structures, Improvements and Machinery	Assessed Value of Homesteads up to \$4,000 at 20 per cent Class 3b	Assessed Value of Remainder at 33 1/3 per cent Class 3	Total Assessed Value of Lands Including all Structures, Improvements and Machinery	Total Assessed Value as Equalized by the Board of Review		Total Assessed Value as Equalized by the County Board	Total Assessed Value as Equalized by the Department of Taxation
										True and Full Value of Buildings and Other Structures	True and Full Value of Machinery Permanently Attached to Real Estate								
							Dollars	Dollars	Dollars	Dollars	Dollars	Dollars	Dollars	Dollars	Dollars	Dollars			
Merlin L. Pugh		1																	
		2																	
		3																	
		4																	
		5																	
Oscar Nelson		6																	
Heat Bliss + Nancy Bliss		7																	
		8																	
Geo. A. + Pauline C. Reiland		9																	
Clifford K. Chuman		10																	
		11																	
		12																	
		13																	
		14																	
Mreda Norman Ecker	That part E. of No. & So. quarter line Lot 1	15																	
Guy L. + Lulu Pugh		16																	
		17																	
Guy L. Pugh		18																	
State of Minnesota		19																	
		20																	

VALUATIONS BY SCHOOL DISTRICTS AS EQUALIZED BY DEPARTMENT OF TAXATION	Rate and Tax Less Homestead Exemption	State Tax on Non-Homestead	TOTAL GENERAL TAX	SPECIAL TAXES				TOTAL TAXES	PAID	WHEN PAID	Number of Receipt	March Settlement 1944	June Settlement 1944	Penalty	November Settlement 1944	Penalty	Collections to First Monday in January 1945	Penalty	Delinquent on First Monday in January 1945	Total Delinquent Tax and Penalty	REMARKS
				District No.	District No.	District No.	District No.														
				Dollars	Dollars	Dollars	Dollars														
1																					
2	169		2646	70			2716	2	PAID IN FULL	JUL 7 1944	7991		2716								
3								3													
4								4													
5								5													
6	120		1880	50			1930	6	2nd Half Paid	OCT 30 1944	10657		965		965						
7	93		1456				1456	7	PAID IN FULL	MAY 18 1944	4423		1456								
8								8													
9	199		3116	84			3200	9	PAID IN FULL	JUL 6 1944	7982		3200								
10	79		1238	34			1272	10	PAID IN FULL	FEB 25 1944	1418		1272								
11								11													
12								12													
13								13													
14								14													
15	7		110	02			112	15	PAID IN FULL	FEB 11 1944	1141		112								
16	380		5959	160			6119	16	PAID IN FULL	JUN 14 1944	5923		6119								52.42 Abated
17								17													
18	131		2052	56			2108	18	PAID IN FULL	JUN 14 1944	5923		2108								
19								19													
20								20													
4	93		33554	592			34146														52.42 Abated

Abate #2081

52.42 Abated

Assessment Roll and Tax List of Unplatted Real Property in Unplatted Real Estate Assessed at 33 1/2 Per Cent of True and Full Value; Attached Machinery at 33 1/2 Per Cent of True and Full Value.

Form 4 CD MILLER-DAY COMPANY, MINNEAPOLIS

Table with columns: IN WHOSE NAME ASSESSED, TO WHOM TRANSFERRED, DESCRIPTION OF PROPERTY (Subdivision, Sec, Town, Range, Acres, 100ths), No. School District, Ind. Ho. st. Includes entries for Merlin L. Pugh, Oscar Nelson, Geo. A. + Pauline C. Reiland, Clifford K. Chuman, Nedra Norman Ecker, Guy L. + Lulu Pugh, Guy L. Pugh, State of Minnesota.

Entire court description on 1944 tax list

Chuman description as shown in register of deeds office;

Beginning at a point approximately 1320 feet south of the NW corner of said Lot 2 thence in an easterly direction to the meander line of Mule Lake, thence in a southerly direction 250 feet along the meander line of said Mule Lake thence returning in a westerly direction to the west section line of Lot 2 thence north on the section line 200 feet to point of beginning.

Begin 1320' S of N.W. Cor. Lot 2, E. to Mule Lake, S 250' along Mule Lake, W. to W. Sec. line of Lot 2, N. 200' to beg.

Handwritten notes: 'Nearly 300', '5 2/10 acre of tax', 'Plus about 5 ac', 'Open up to 3 ac'.

Cass County, Minnesota, for Taxes for the Year 1943.

Table with columns: VALUATIONS BY SCHOOL DISTRICTS AS EQUALIZED BY DEPARTMENT OF TAXATION (District No., Rate, etc.), Rate and Tax Less Homestead Exemption, State Tax on Non-Homestead, TOTAL GENERAL TAX, SPECIAL TAXES, TOTAL TAXES, PAID, WHEN PAID, Number of Receipt, March Settlement, June Settlement, November Settlement, Collections to First Monday in January, Delinquent on First Monday in January, Total Delinquent Tax and Penalty, REMARKS. Includes entries for 169, 120, 93, 199, 79, 7, 380, 131, 131, 93, 1411, 1504.

